

SAILING INSTRUCTIONS

TEXAS SAILING ASSOCIATION YOUTH CIRCUIT REGATTA

THE ROCKIN' ROCKPORT REGATTA

Organizing Authority: Rockport Yacht Club
722 Navigation Circle, Rockport, Texas

June 21-22, 2025

POSTED May 30, 2025

1. RULES:

- 1.1 The regatta will be governed by the rules as defined in The Racing Rules of Sailing (RRS).
- 1.2 "The Texas Youth Racing Circuit Conditions" apply and are available on the web site at <http://www.txsail.org/>. A copy will also be available at the regatta site.
- 1.3 The *rules* for all classes are modified so that membership in a class organization is not required.
- 1.4 [DP] All boats shall have sail numbers which match the registration form. Sail numbers meeting class standards are required.
- 1.5 Appendix T, Arbitration, shall be used.

2. NOTICES TO COMPETITORS:

Notices to competitors will be posted on the official notice board located inside the Clubhouse by the restrooms at the Rockport Yacht Club, 722 Navigation Circle, Rockport, Texas.

3. CHANGES IN SAILING INSTRUCTIONS:

- 3.1 Any change to the sailing instructions (SI) will be posted on the official notice board at least two (2) hours before the first race of each day, except for changes to the schedule of races which will be posted by 1900 on the day before they take effect.
- 3.2 For the Green Fleet only, oral changes may be made by the Race Committee (RC) on the water prior to the time of the warning signal of any race upon the raising of signal flag "L" with one sound.

4. SIGNALS MADE ASHORE:

- 4.1 Signals made ashore will be displayed from the flagpole or yardarm at the Club or from the RC Signal Boat if docked in the Rockport Harbor by/near the Clubhouse.
- 4.2 DO NOT launch boats until Code Flag "D" is raised with one sound signal. The club launch and recovery team will notify participants the order of launch; and will assist in launching each boat, storing the trailer during the race, and recovering the boat at the end of the day's racing. This modifies "Race Signals".
- 4.3 Code Flag "AP" with two sound signals means the race is postponed. DO NOT leave the club area until Code Flag "D" is raised with one sound signal. The warning signal will not be made sooner than 30 minutes from the lowering of "AP", accompanied by one signal. This modifies "Race Signals".

5. SCHEDULE OF RACES:

- 5.1 Six (6) or more races are scheduled.
- 5.2 Completion of one (1) race shall constitute a TSA Youth Circuit Regatta.
- 5.3 Schedule:

Saturday, June 21, 2025

0800-0930 Breakfast

0800-0900 Registration and check-in at the Rockport Yacht Club Clubhouse

Saturday (cont.)

0930	Skipper's Meeting at the Rockport Yacht Club Clubhouse. (Attendance Mandatory)
1000 (approx.)	Boats launched per directions of the Dockmaster from the Club ramp upon display of the "D" flag
1100	Warning Signal for the first race, additional races to follow
Between Races	Lunch will be provided to sailors during breakfast to take with them for on the water; or served at the Rockport Yacht Club Clubhouse for Opti Green Fleet sailors and non-participants.

Sunday, June 22, 2025





0730-0900	Breakfast
0900	Coaches/Parents Meeting in the Clubhouse
0930 (approx.)	Boats Launched per directions of the Dockmaster from the Club Ramp upon display if the "D" flag
1030	Warning Signal for the first race, additional races to follow
1400	No warning signal after this time
TBD	The lunch and awards ceremony will be served at the Rockport Yacht Club Clubhouse one hour after the last race of the day. Opti Green Fleet ceremony may occur earlier, one hour after their last race of the day.

5.4 Attendance at the Competitors Meeting held at 0930 on Saturday of the regatta at the Clubhouse is mandatory. Attendance at the Coaches/Parents Meeting held on Sunday of the regatta is strongly encouraged.

5.5 No warning signal will be given after 1400 on Sunday.

6. CLASS FLAGS:

The following flags will be used as class flags during starting sequences:

Class	Class Flag
Optimist Green	
Optimist White, Blue, and Red Fleets	
O'pen Skiff	
ILCA 4	

ILCA 6



ILCA 7



Double-Handed

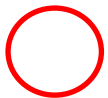


7. RACING AREAS:

Three (3) racing areas will be set, one for use by Optimist Green fleet, one for use by Optimist W/B/R and O'pen Skiff fleets, and one for the Laser/Double-Handed fleets. The approximate locations of the racing areas are shown in Figure 1 with further details announced at the Mandatory Skippers Meeting.

Fleet Circle Color Key

Green

White/Blue/Red &
O'pen Skiff

Laser/Double-Handed

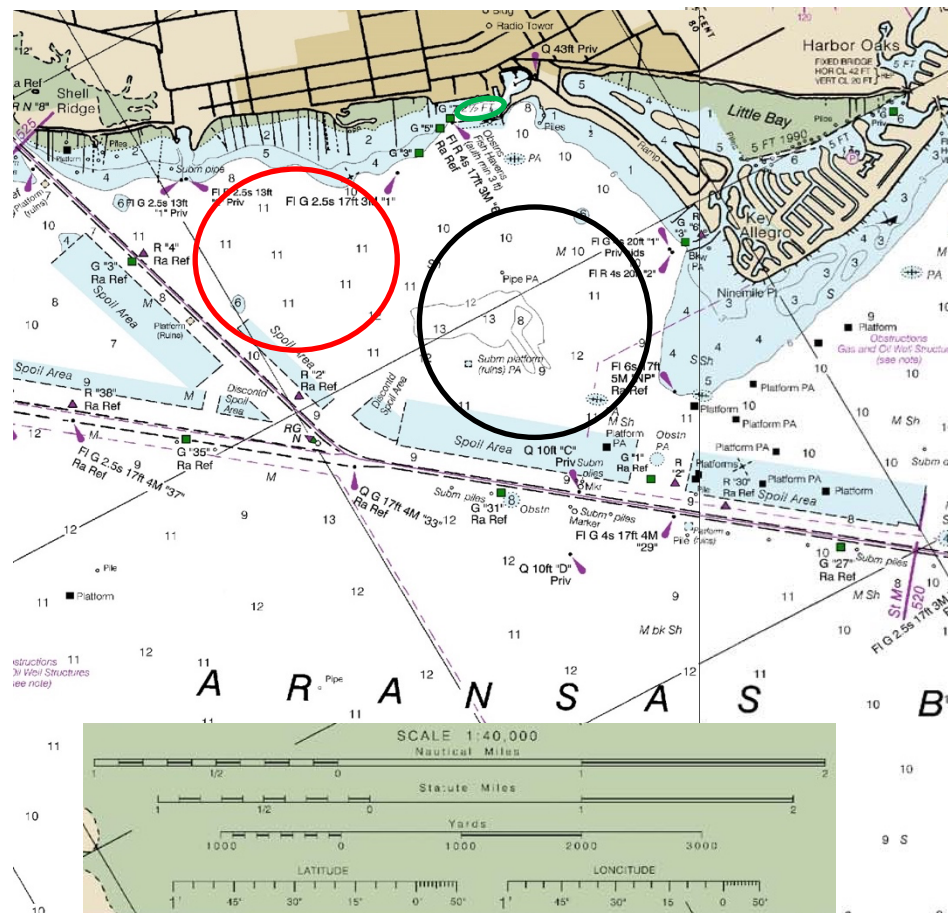
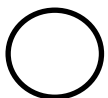


Figure 1

8. CHECK-IN ON THE WATER:

Prior to the first warning signal of the competitor's fleet of each day, each competitor shall sail past the stern of the RC signal boat on starboard tack, hail their sail number and be acknowledged by the RC. Failure to do so will result in a 20% penalty for the first race of the day.

9. COURSES:

- 9.1 There may be six (6) types of race courses as defined in Addendums A & B, Course Diagrams. Addendum A is for the Opti and O'pen Skiff courses and Addendum B is for the Laser and Double-Handed courses. Multiple times around the course will be designated by a number following the "P", "T" or "O" designations
- 9.2 For the Opti and O'pen Skiff courses, unless a race is shortened in accordance with the RRS, the start/finish lines will be in the middle of the race course.
- 9.3 For the ILCA and Double-Handed courses, unless a race is shortened in accordance with the RRS:
- 9.3.1 The start line will leeward of the leeward gate or mark with an orange flag on the port side of the RC signal boat.
 - 9.3.2 The leeward gate is an obstruction for boats sailing upwind. Boats that sail windward through this obstruction will be scored Did Not Finish (DNF), without a hearing.
 - 9.3.3 The finish line will be leeward of the leeward gate and will be located at the RC signal boat with a blue flag on its starboard side.
 - 9.3.4 Boats not racing nor in a starting sequence will remain in a waiting area leeward of the finish line and RC signal boat. Boats who are not in a starting sequence shall stay completely clear of those in sequence. **RRS 23.1 is amended to include a boat racing "or in a starting sequence."**

10. MARKS:

- 10.1 For the Opti Green Fleet, marks will be round red/orange buoys.
- 10.2 For the Opti White/Blue/Red and O'pen Skiff Fleets, marks will be orange inflatable tetrahedrons. If a red/orange round offset mark is present, sailors will leave it to port after rounding the windward mark.
- 10.3 For the ILCA and Doublehanded Fleets, marks will be yellow inflatable cylinders for all courses. If a red/orange round offset mark is present, sailors will leave it to port after rounding the windward mark.
- 10.3.1 Windward, offset, and reaching marks will be left to port when rounding.
 - 10.3.2 Boats sailing downwind will enter the leeward gate between the marks and may round either mark leaving the port mark to port or the starboard mark to starboard when rounding to sail windward. If only one leeward mark is in place (no gate exists), it shall be left to port.
 - 10.3.3 When entering the leeward gate to finish, boats will sail between the marks and leave the port mark to port on a broad reach toward the finish line.
- 10.4 To maintain course configuration during a race, the RC may make minor adjustments of the course, up to 10 degrees and .10nm, without signaling a change. This changes RRS 33.

11. THE START:

- 11.1 For the Green Fleet, races will be started with sounds according to RRS Appendix U (3-minute start sequence). The race committee may verbally hail the countdown. The class flag shall be displayed on the signal boat during the start sequence. The preparatory (P) flag may be used during the sequence.
- 11.2 For all fleets other than the Optimist Green Fleet, races will be started in accordance with RRS 26. A series of short signals may be made before any starting sequence begins to attract attention.
- 11.3 The starting line will be between a staff displaying an orange flag on the RC signal boat and the course side of the starting mark.

- 11.4** A boat may not start later than four (4) minutes after the starting signal for its class. Boats attempting to start after this time will be scored Did Not Start (DNS) without a hearing. This changes RRS 28.1, A 4 and A 5.
- 11.5** Boats whose warning signal has not been made shall keep clear of both the start line and all boats whose warning signal has been made.
- 12. RECALLS:**
- 12.1** The RC intends to hail the sail numbers of OCS boats after the starting signal.
- 12.2** The failure of any boat to hear the hail, an untimely hail of OCS boats, failure to hail any boats, and the order of the boats in the hail shall not be grounds for granting redress. This changes RRS 41 and 61.1(a), 61.1(b), 61.4(b)(1), and 63.2(a).
- 13. THE FINISH:**
- 13.1** The finish line for the Opti Green, Opti W/B/R, and O'pen Skiff courses shall be between a staff displaying an orange flag on the RC signal boat and the course side of the finish mark. This modifies the RRS Race Signals.
- 13.2** The finish line for the Laser and Double-Handed courses shall be between a staff displaying a blue flag on the RC signal boat and the course side of the finish mark.
- 13.3** The RC signal boat may display flag A (with no sound) while boats are finishing to signal that there will be no more races that day.
- 14. TIME LIMIT:**
- 14.1** The time limit for each race will be sixty (60) minutes for the first boat to finish. If no boat has complied with RRS 28.1, the race shall be abandoned.
- 14.2** The Finishing Window is twenty (20) minutes.
- 14.3** The Finishing Window is the time for boats to finish after the first boat sails the course and finishes. Boats failing to finish within the Finishing Window, and not subsequently retiring, penalized or given redress, will be scored Time Limit Expired (TLE) without a hearing. A boat scored TLE shall be scored points for the finishing place two (2) more than the points scored by the last boat that finished within the Finishing Window. This changes RRS 35, A5.1, A5.2 and A10.
- 14.4** If no boat has rounded the first mark within twenty (20) minutes of the start, the race shall be abandoned. This modifies RRS 32 and 35.
- 15. PROTESTS AND REQUESTS FOR REDRESS:**
- 15.1** A competitor must notify the Race Committee (RC) of their intent to protest another boat, at the finish line, before talking to a Support Person including coach or a parent. If this instruction is not followed, the protest will be found to be invalid. This is in addition to and modifies the requirements of class rules and RRS 60.2.
- 15.2** Protests forms will be made available at the Official Notice Board and delivered to the Judges or their representative. The protest time limit is sixty (60) minutes after the RC signal boat from each Competitors' race course docks.
- 15.3** The protest time limit will be posted. A list of protests will be posted on the official notice board no later than thirty (30) minutes after the end of protest time.
- 15.4** Penalties for anything other than RRS Part 2 or 3 may be less than disqualification at the discretion of the protest committee
- 15.5** The person who served as mediator during Arbitration may not serve on the protest committee.
- 15.6** Green Fleet protests are teaching opportunities. An open discussion of the protest process (mock protest) may be held if resources are available. All competitors, parents and coaches are encouraged to attend and observe.

16. SCORING:

16.1 The Low Point System of RRS Appendix A shall apply, modified so that:

16.1.1 A boat's worst score is excluded only after five (5) races have been completed.

16.1.2 A boats two worst scores are excluded only after ten (10) races have been completed.

16.2 For Optimist White, Blue, Red fleets, the event shall be scored as a whole with all boats receiving scores according to recorded finish positions. "Overall Scoring" shall be used to determine White, Blue, Red awards.

16.3 The O'pen Skiff fleet will be scored separately within its fleet.

16.4 For ILCA and Double-Handed fleets, the regatta shall be scored separately within their fleet.

17. DISPOSAL OF TRASH:

[DP] Per RRS 47, boats observed purposefully discharging trash into the water will either be disqualified from all races sailed on the day the infraction is observed or be subject to other suitable disciplinary action or both.

18. SAFETY:

18.1 [DP] RRS 40 is changed so that each competitor shall wear a U.S. Coast Guard approved life jacket (PFD), in good condition, that is 100% dependent on foam for flotation (i.e., inherently buoyant) and the appropriate size for the sailor, at all times while on the water, except for brief periods while adding or removing clothing. A violation of this instruction may be protested by race officials or a competitor; however, an inadvertent and momentary breach of this instruction may receive a penalty less than disqualification at the discretion of the protest committee. A pinnie may be worn outside of the PFD.

18.2 [DP] A competitor who withdraws from a race or does not intend to start a race shall inform the RC as soon as possible. This may also be accomplished by the competitor notifying a member of the RC ashore.

18.3 Sailors of Double-Handed fleet boats are encouraged, but not required, to carry an emergency safety line cutter, such as an "S-Cutter" tool or harness webbing cutter.

18.4 First Aid is located and available in the Clubhouse. The nearest emergency medical facility is ER 24/7 Rockport located at 400 Enterprise Blvd. in Rockport. Their phone number is 361-727-8200. For serious or life-threatening injuries dial 911 to seek emergency response.

19. SUPPORT BOAT RESTRICTIONS:

19.1 Support Boats (including coaches and parents) (support boats) shall have a working VHF radio and monitor the RC channel.

Race Course/Fleet	RC Channel
Shore/Safety	78
Optimist Green	71
Optimist W/B/R	69
ILCA, & Double-Handed	68

19.2 [DP] Support boats shall keep at least two hundred (200) feet away from all competitors and shall not communicate with any racing competitor from the time of the competitor's preparatory signal until after the competitor has finished, or the RC signals a postponement or abandonment.

19.3 Failure of support boats to keep wakes down, remain outside the race course while boats are racing, may result in the RC limiting where support boats may go during a race.

19.4 [DP] All Support Persons operating a boat must employ a safety kill-switch lanyard as required by Texas state law, especially when in the proximity of and approaching sailors in and on the water. If a Support

Person's boat is required to use a kill switch and is not equipped with, or is not using, a kill switch, the Support Person may be subject to protest.

- 19.5** Optimist Green Fleet: Notwithstanding SI 19.2, coaching of Green Fleet Optimist skippers while racing is permitted; however, coaching shall be limited to skippers in the bottom half of the fleet in any given race. Coaches shall provide fair and consistent support to all competitors, not just to their team or sailor.

20. RISK, DISCLAIMER OF LIABILITY & PERSONAL CONDUCT:

- 20.1** An adult (parent, guardian or designated adult) is responsible for the safety of their sailor. It is the responsibility of this adult to decide if the sailor should sail in the weather and sea conditions that might arise during the event. The adults supervising the competitors are ultimately responsible for the risks. See RRS 3 (Decision to Race). The organizing authority will not accept any liability for material damage or personal injury, or death sustained in conjunction with or prior to, during, or after this event.
- 20.2** The designated adult shall accept full responsibility for all actions of the competitor during any activity related to the event. This includes on-shore activities before, during and after the regatta.
- 20.3** All competitors, coaches and parents are expected to maintain the highest levels of conduct throughout the entire event until such time as they leave for home or the airport. Enforcement of discipline and conduct shall be conducted as per RRS 69.1 and/or the policies and procedures of US Sailing (Regulation 15).

21. TROPHY PRESENTATION:

Trophy presentations will be held on Sunday afternoon approximately one hour after the last race on a race course (Rockwall Harbor or Aransas Bay) or when protest hearing(s) are completed.

- 21.1 ILCA 4 fleet:** 1-3
- 21.2 ILCA 6 fleet:** 1-3
- 21.3 ILCA 7 fleet:** 1-3
- 21.4 Double Handed fleet:** 1-3
- 21.5 ILCA/Double Handed Outstanding Sailor** (Dave Taylor Sportsmanship Award)
- 21.6 Opti White fleet:** 1-3
- 21.7 Opti Blue fleet:** 1-3
- 21.8 Opti Red fleet:** 1-3
- 21.9 Opti overall:** 1st place
- 21.10 O'pen Skiff fleet:** 1-3
- 21.11 Opti/O'pen Skiff Outstanding Sailor** (Dave Taylor Sportsmanship Award)
- 21.12 Green fleet:** Participation medallions

Above all, BE SAFE and HAVE FUN!

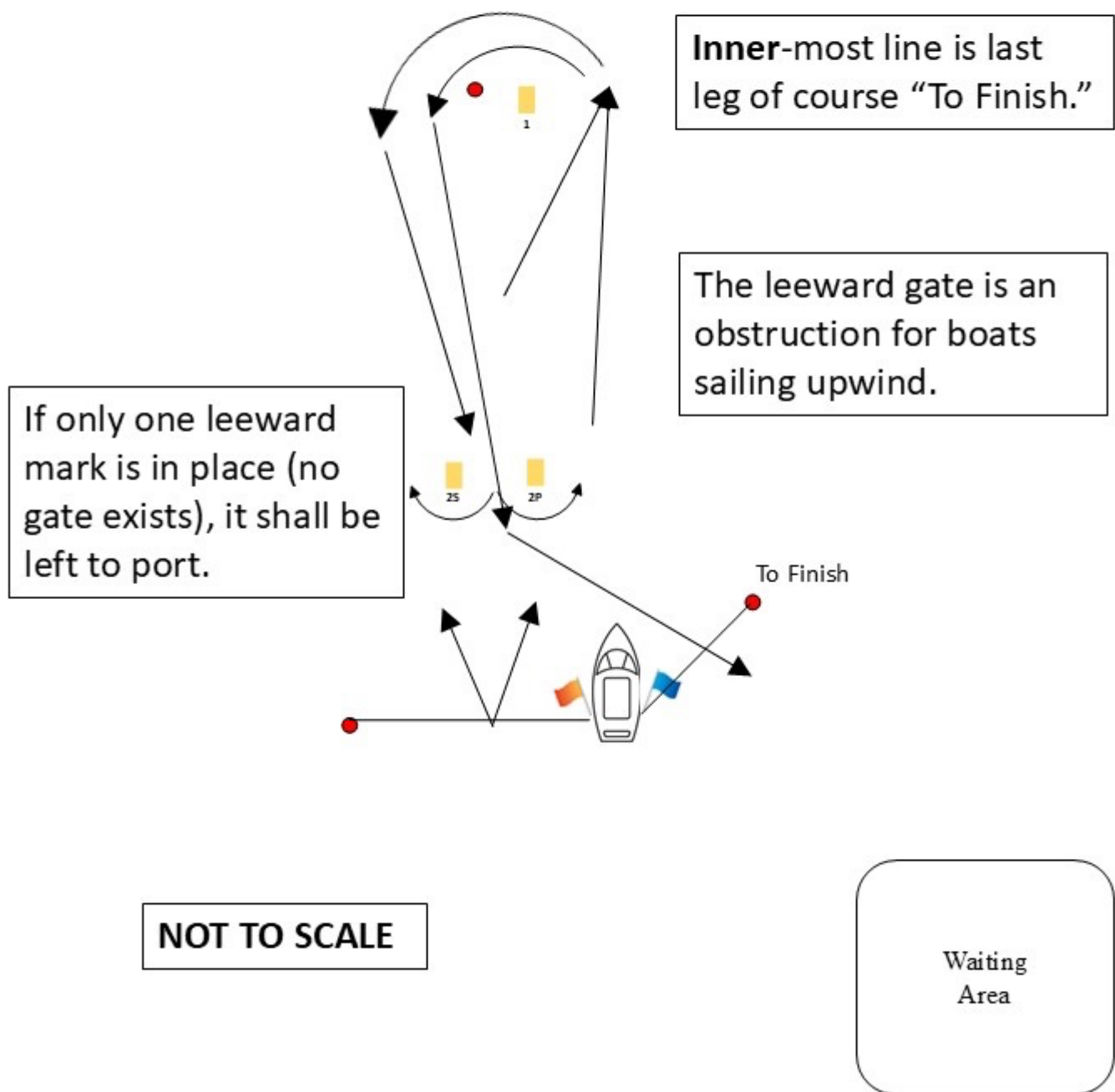
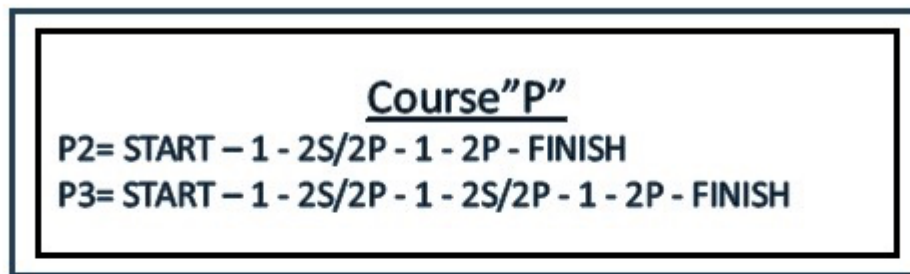
ADDENDUM A – COURSE DIAGRAMS FOR OPTI COURSES

	Course W – Windward/Leeward, Windward Finish	
	<i>Signal</i>	<i>Mark Rounding Order</i>
	W	Start – 1* – 2 – Finish
	W2	Start – 1* – 2 – 1* – 2 – Finish
	W3	Start – 1* – 2 – 1* – 2 – 1* – 2 Finish
* - if an offset mark (1a) is present, sailors will leave the offset mark to port after rounding the windward mark (1)		

	Course T – Triangle, Windward Finish	
	<i>Signal</i>	<i>Mark Rounding Order</i>
	T	Start – 1 – 2 – 3 – Finish
	T2	Start – 1 – 2 – 3 – 1 – 2 – 3 – Finish
	T3	Start – 1 – 2 – 3 – 1 – 2 – 3 – 1 – 2 – 3 – Finish

	Course O (Olympic) – Triangle, Windward/Leeward, Windward Finish	
	<i>Signal</i>	<i>Mark Rounding Order</i>
	O	Start – 1 – 2 – 3 – 1 – 3 – Finish

ADDENDUM B – COURSE DIAGRAMS FOR LASER & DOUBLE-HANDED COURSES



Course "T"

T1= START - 1 - 2 - 3P - FINISH

T2= START - 1 - 2 - 3S/3P - 1 - 2 - 3P - FINISH

T3= START - 1 - 2 - 3S/3P - 1 - 2 - 3S/3P - 1 - 2 - 3P - FINISH

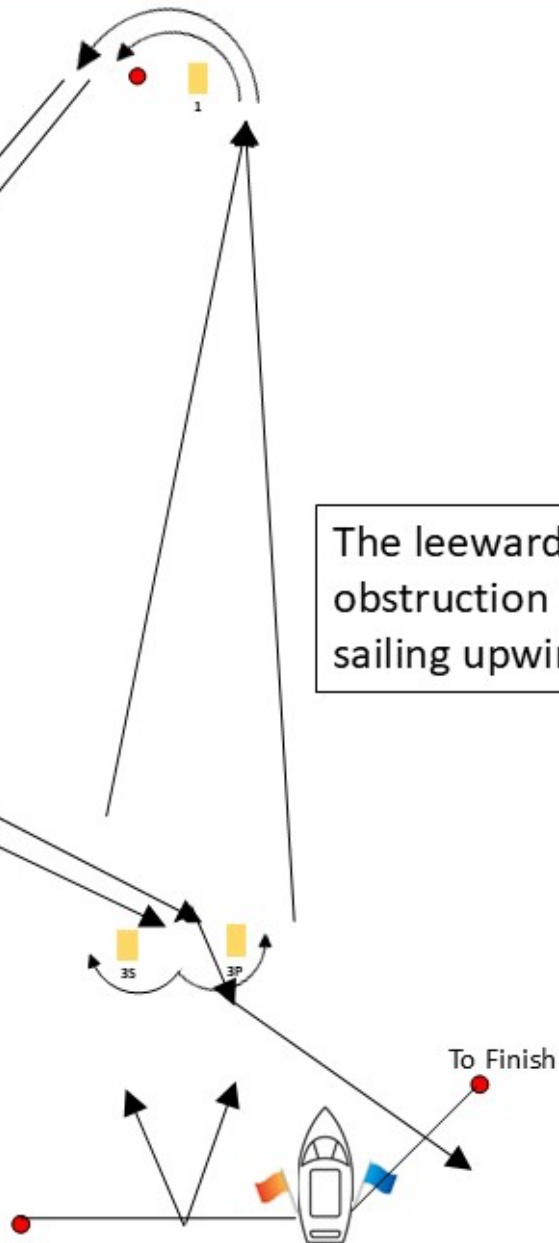
Inner-most line is last leg of course "To Finish."

The leeward gate is an obstruction for boats sailing upwind.

If only one leeward mark is in place (no gate exists), it shall be left to port.

NOT TO SCALE

Waiting Area



Course "O"
O= START – 1 – 2 – 3S/3P – 1 – 3P – FINISH

