

# SAILING INSTRUCTIONS

## SUNFISH DISTANCE RACE PORT A TO ROCKPORT HARBOR

Rockport Yacht Club (RYC), 722 Navigation Circle, Rockport, Texas (Organizing Authority)  
April 5, 2025

### 1. RULES:

- 1.1 The regatta will be governed by the rules as defined in *The Racing Rules of Sailing* (RRS).
- 1.2 The rules for all classes are altered so that membership in a class organization is not required
- 1.3 All boats shall have sail numbers which match the registration form. If no sail number exists, boats shall be identified by the sail color pattern or other distinguishing feature.
- 1.4 Life vests worn by the competitors are strongly encouraged, but not required.
- 1.5 Appendix T, Arbitration, will be used.

### 2. NOTICES TO COMPETITORS:

These Sailing Instructions will be provided during the Skippers Meeting on Saturday, May 18, 2024.

### 3. SCHEDULE OF RACES:

- 3.1 The course of the race will depend on the prevailing wind direction.
  - 3.1.1 If the prevailing winds are from the South, the regatta will start in the Lydia Ann Channel and end near the RYC clubhouse in Aransas Bay.
  - 3.1.2 If the prevailing winds are from the North, the regatta will start near the RYC clubhouse in Aransas Bay and end in the Lydia Ann Channel.
- 3.2 Schedule of Race (Saturday, April 5, 2025): Post race activities are approximate
  - 0900 Skippers meeting (mandatory) at RYC Clubhouse
  - 1015 Contestants trailer boats to launch/recovery site (South wind) or launch boats at clubhouse and move trailers to launch/recovery site (North wind)
  - 1015 If a North wind exists, shuttles will be provided to return contestants to the RYC Clubhouse for the start of the race.
  - 1115 Race Committee departs to set up the course & provide support boats
  - 1230 Warning Signal at the starting line
  - 1500 Heavy appetizers and cash bar opened at RYC Clubhouse
  - 1700 Awards ceremony
  - 1800 If a South wind exists, shuttles will be provided for contestants to retrieve trailers from the launch/recovery site and load their boats
  - 1830 Event concludes

4. **RACING AREA:** See Appendix A (showing the course for a prevailing South wind). Skippers may set their course anywhere from the starting line, to the rounding mark, and then the finish. Skippers are responsible for NOT interfering with commercial traffic in the ICW and are encouraged to avoid the ICW where possible.

5. **CLASS FLAGS:**

The Sunfish fleet flag will be used as the warning flag with the standard Preparatory flag at the starting line.

6. **CHECK-IN ON THE WATER:**

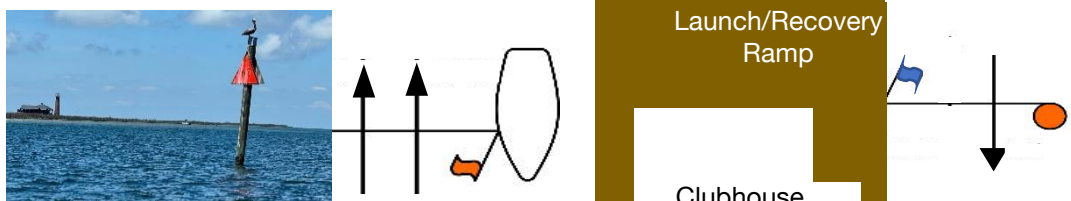
Prior to the first warning signal of the race but not before 1200 hours, each competitor shall contact the Race Committee (RC) by hailing the Signal Boat to announce his/her sail number or distinguishing feature; and confirm acknowledgement.

7. **RACE COURSES:**

- 7.1 The course includes portions of the Intracoastal Waterway. Where possible and depths permit, contestants will sail outside the bounds of the Intracoastal Waterway. **In all situations, contestants will give way to and not interfere with any commercial traffic operating in the course area.**

- 7.2 If the prevailing wind is from the South:

- 7.2.1 The start line will be identified with an orange flag displayed on the Signal Boat and the "R-62" ICW mark. The finish line will be identified with a blue flag displayed from the RYC clubhouse deck and a red-orange round mark.



- 7.2.2 Both the start and the finish will be downwind. For the start, the signal boat will be anchored on the EAST side of Lydia Ann Channel with the orange flag on its starboard side. The finish line will be set up for a downwind finish.

- 7.3 If the prevailing wind is from the North:

- 7.3.1 The start line will be identified with an orange flag displayed on the Signal Boat and a red-orange round mark. The finish line will be identified with a blue flag displayed on the signal boat and the "R-62" ICW mark.



- 7.3.2 Both the start and the finish will be downwind. For the start, the signal boat will be anchored near the RYC clubhouse outside of Rockport Harbor with the orange flag on its starboard side. For the finish, the signal boat will be anchored on the EAST side of Lydia Ann Channel with the blue flag on its port side.

**8. MARKS:**

- 8.1** The starting and finishing pins will be a red-orange round mark or the “R-62” ICW mark.
- 8.2** If the prevailing wind is from the South, the leeward/reaching mark for rounding to a broad reach will be a yellow cylinder. If the prevailing wind is from the North, no reaching marks will be used.

**9. THE START:**

- 9.1** The starting line will be between a staff displaying an orange flag on the Signal Boat and the course side of the starting pin.
- 9.2** A five-minute starting sequence will be used.
- 9.3** A competitor boat that has checked in but not started within 2 minutes of the last start will be hailed to confirm its DNS status. This changes RRS A5.1.

**10. RECALLS:**

Recalls will be signaled in accordance with RRS 29. The RC intends to hail OCS boats after the starting signal. The failure of any boat to hear the hail, an untimely hail of OCS boats, failure to hail any boats, and the order of the boats in the hail shall not be grounds for granting redress. This changes RRS 62.1

**11. THE FINISH:**

- 11.1** The finish line shall be between a staff displaying a blue flag on the RYC Clubhouse dock or from the signal boat and the course side of the finishing pin.
- 11.2** The finish will be a downwind finish.
- 11.3** If the finish is at the RYC Clubhouse, boats who have finished must remain clear of other contestant boats yet to finish. The approach to the recovery dock must be from the North near the dock.

**12. TIME LIMIT:**

- 12.1** If no competitor boat finishes the race within four hours after the start, the race shall be abandoned.
- 12.2** Competitor boats failing to finish by 1630 hours will be finished in place. This changes RRS 35, A5.1 and A5.2.

**13. PROTESTS AND REQUESTS FOR REDRESS:**

- 13.1** A competitor boat intending to file a protest for an incident occurring in the racing area shall inform the RC at the finish line of its intent to protest as soon as possible after finishing.
- 13.2** Protests shall be in writing and delivered to the PRO within sixty (60) minutes after the Signal Boat docks. Protest forms will be available from the Notice Board located between the two restrooms in the RYC Clubhouse.
- 13.3** The protest time limit will be posted. A list of protests will attempt to be posted on the official notice board within ten (10) minutes of – but no later than thirty (30) minutes after – the end of protest time. This posting constitutes the notification required in RRS 61.1(b) and 63.2.
- 13.4** A competitor boat is not permitted to protest another boat for breaking sailing instructions 15 or 16. This changes RRS 60.1(a). In addition, penalties for anything

other than RRS Part 2 or 3 may be less than disqualification at the discretion of the protest committee.

**13.5** Appendix T, Arbitration, will be used. This modifies RRS 63.1 and 63.2.

**13.6** The person who served as mediator during Arbitration may not serve on the protest committee.

**14. SCORING:**

**14.1** The Low Point scoring system defined in RRS A3, A6, A7, and A9 will apply.

**15. DISPOSAL OF TRASH:**

Boats observed purposefully discharging trash into the water will either be disqualified from the race or be subject to other suitable disciplinary action or both.

**16. SAFETY PLAN:**

**16.1** All participants shall be capable of taking care of themselves and lending assistance when necessary. The decision to start or continue the race is the responsibility of the skipper for each boat.

**16.1.1** The RC will monitor the RYC Lightning Detection System and may abandon the race if lightning approaches the racing area within 20 miles or is anticipated to enter the area within 30 minutes.

**16.1.2** If winds are expected to reach or exceed 25 sustained knots, the race will be abandoned.

**16.1.3** The maximum sea state threshold for safe operation of the event is set at 3 feet chop and visibility must exceed a 3-mile minimum; otherwise, the race will be abandoned.

**16.1.4** If the regatta is abandoned by the RC either before or during the race, all skippers will be notified on VHF Channel 69.

**16.2** Every boat in the racing area, whether competitor, committee, or other spectator boat is required to comply with U.S. Coast Guard regulations for equipment carried aboard.

**16.3** The primary method for communicating will be verbally to/from chase and/or committee boats. The secondary method for communicating will be flags flown from the committee boat. Committee and chase boats will monitor VHF Channel 16 and communicate via Channel 69.

**16.4** All participants are instructed to NOT interfere with commercial traffic.

**16.5** All support boats are reminded to wear a safety kill-switch lanyard in accordance with the September 2019 Texas state law, especially when in the proximity of and approaching sailors in and on the water.

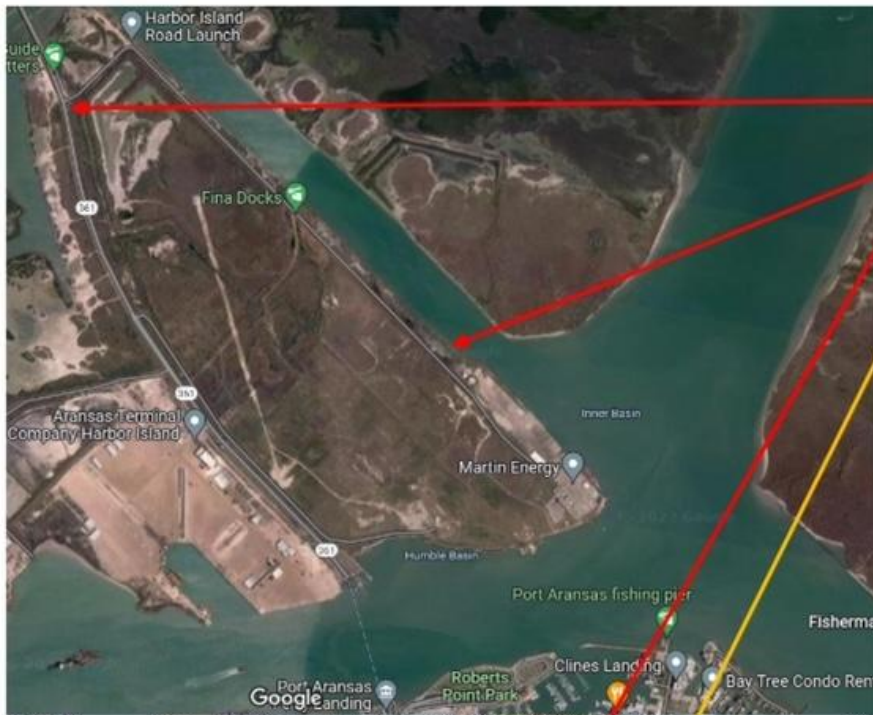
**16.6** A competitor who has checked in on the water and subsequently withdraws from a race shall inform the RC as soon as possible. This may also be accomplished by the competitor proceeding to the RYC Clubhouse and notifying the RC by VHF Channel 69 or calling the PRO on cell number 214-906-4810.

**16.7** The nearest emergency medical facility to the Rockport Yacht Club is ER 24/7 Rockport located at 400 Enterprise Blvd. in Rockport. Their phone number is 361-727-8200. For serious or life-threatening injuries dial 911 and/or contact the Coast Guard on Channel 16 to seek emergency response.



# ATTACHMENT

## Sunfish Distance Race Port A to Aransas Bay Sprint



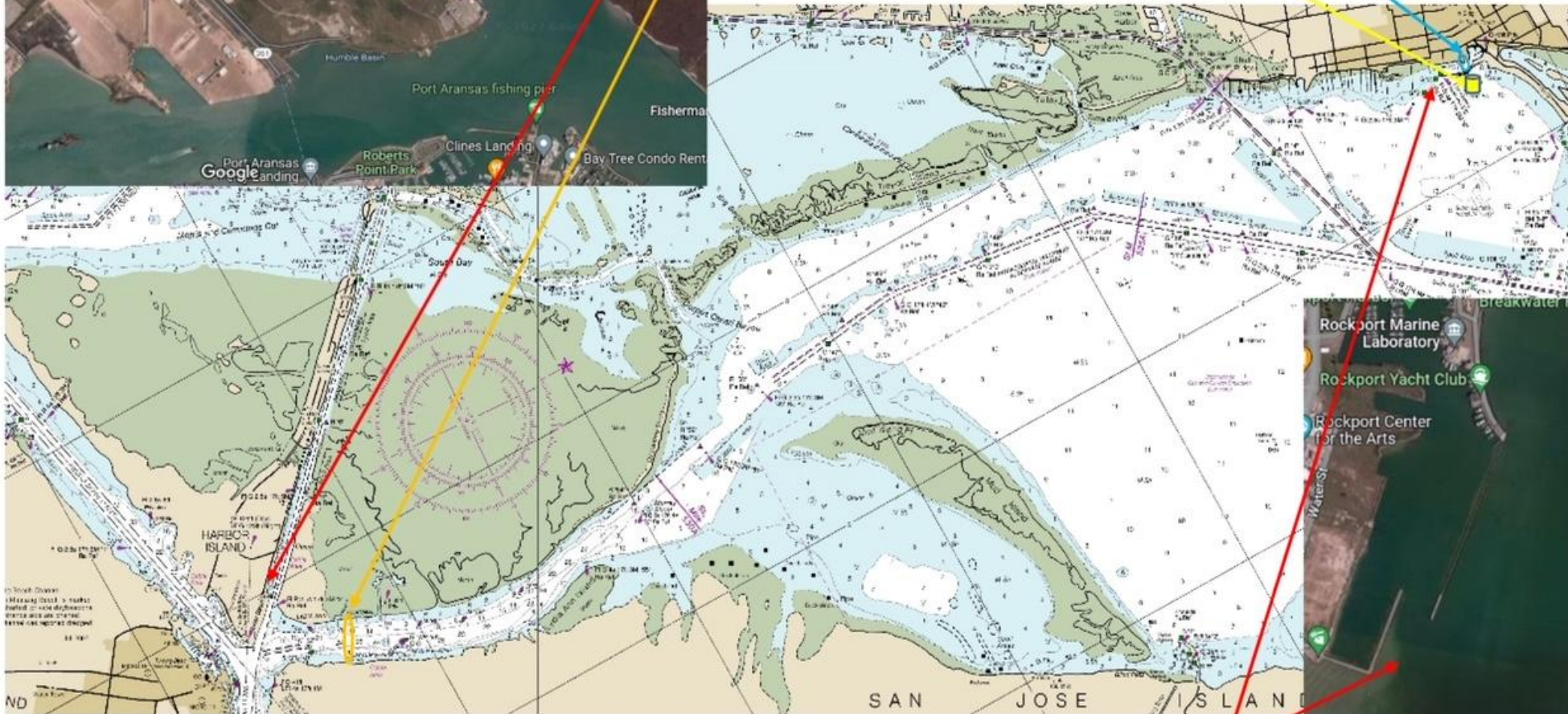
Launch location

Approx start

Approx finish

Approx turning mark  
(round to port)

Turn here



Rockport Harbor Entrance