



**2025 GBCA J. Kevin Box  
Conundrum Regatta  
May 24, 2025  
Organizing Authority: Galveston Bay Cruising Association  
Clear Lake Shores, TX USA**

**SAILING INSTRUCTIONS**

**1 RULES**

- 1.1 The event is governed by the *rules* as defined in *The Racing Rules of Sailing (RRS)*.
- 1.2 The notation “[DP]” in a rule in these Sailing Instructions means that the penalty for a breach of a rule may, at the discretion of the protest committee, be less than disqualification.
- 1.3 The notation “[NP]” in a rule in these Sailing Instructions means that a boat may not protest another boat for breaking that rule. This changes RRS 60.1.
- 1.4 Rule 60.4(a)(2) is changed as follows: “(2) If it alleges a breach of a rule of Part 2 or rule 31 and is from a boat that was not involved in, and did not see, the incident, or”

**2 CHANGES TO SAILING INSTRUCTIONS**

- 2.1 Any change to the sailing instructions will be posted before 0800 on the day it will take effect, except that any change to the schedule of races will be posted by 2000 on the day before it will take effect.
- 2.2 Changes to a sailing instruction may be made on the water by contacting the specific class(s) affected by VHF notifying of the change.

**3 COMMUNICATIONS WITH COMPETITORS**

- 3.1 Notices to competitors will be posted on the official notice board located at the official regatta website located at:  
[https://www.regattanetwork.com/event/29207#\\_home](https://www.regattanetwork.com/event/29207#_home) .
- 3.2 On the water, the race committee intends to monitor and communicate with competitors on VHF radio channel 69.
- 3.3 The following communications may be made by the race committee on VHF.

- Race Course to be sailed
- General Race Committee intentions

3.4 [DP] While racing, except in an emergency, a boat shall not make voice or data transmissions and shall not receive voice or data communication that is not available to all boats.

3.5 Competitors using the RaceQs tracking app may be used for verifying finish times & order and obstruction intrusion.

## 4 CODE OF CONDUCT

4.1 [DP] Competitors and support persons shall comply with reasonable requests from race officials.

4.2 [DP] Competitors and support persons shall handle any equipment provided by the organizing authority with care, seamanship, in accordance with any instructions for its use and without interfering with its functionality.

## 5 SIGNALS MADE ASHORE

5.1 Signals made ashore will be displayed on the official notice board located at the official regatta website located at [https://www.regattanetwork.com/event/29207#\\_home](https://www.regattanetwork.com/event/29207#_home)

5.2 When flag AP is displayed ashore, '1 minute' is replaced with 'not less than 60 minutes' in Race Signals AP.

5.3 In the event of signals made ashore, the Race Committee *may* also notify participants via SMS text message to the number provided at registration.

## 6 SCHEDULE OF RACES

### 6.1 Schedule

Date	Time	Event
Wednesday May 21 <sup>st</sup>	18:00	Registration Deadline
Wednesday, May 21 <sup>st</sup>	18:00	Classes are formed
Friday, May 23 <sup>rd</sup>	16:00	Sailing Instructions available online
Friday, May 23 <sup>rd</sup>	19:00	Skipper's Meeting at GBCA clubhouse
Saturday, May 24 <sup>th</sup>	11:00	Race Start – (Pursuit)
Saturday, May 24 <sup>th</sup>	18:00 (est.)	Social – GBCA Clubhouse

## 7 CLASS FLAGS

7.1 The class flags are as follows:

Double-handed PHRF Spinnaker	Red
Double-handed PHRF Non-Spinnaker	Green
Multihull	Purple

## 8 RACING AREA

8.1 SI Addendum #1 shows the location of the racing area.

## 9 COURSES

9.1 SI Addendum #1 shows an illustration of the course.

9.2 Three 'laps' of the course are required by each boat in the manner of her choosing as described below (for example, one lap is comprised of 1-A/1-B):

1-A. Sail to E, H or SBC #8. Round Mark to Port.

1-B. Sail back to the Start/Finish Mark from the direction of the last mark (i.e. reverse of 1-A). Round Start/Finish mark to starboard or port.

2-A. Sail to either of the two remaining Marks not yet rounded (E, H, or SBC #8 via 2A). Round Mark to port.

2-B. Sail back to the Start/Finish Mark from the direction of the last mark (i.e. reverse of 2-A). Round Start/Finish mark to starboard or port.

3-A. Sail to the remaining Mark not yet rounded, Round mark to port.

3-B. Sail back to Finish

\* Note: When rounding Kemah Channel Marks #1 & #2, stay aware of boats using the channel.

## 10 MARKS

10.1 Mark(s) (is)are fixed Galveston Bay markers.

Mark	Approximate Coordinate	Range / Distance from Starting Line	Mark Bearing from Starting Line	Bearing Towards starting line
Start / Finish Orange Tetrahedron	N 29° 32.874' W 94° 58.897' (approx..)	n/a	-	-

<b>E</b>	<b>N 29° 35.787' W 94° 56.935'</b>	<b>3.38 nm</b>	<b>030°</b>	<b>210°</b>
<b>H</b>	<b>N 29° 33.255' W 94° 56.542'</b>	<b>2.08 nm</b>	<b>079°</b>	<b>259°</b>
<b>SBC #8</b>	<b>N 29° 32.417' W 94° 55.080'</b>	<b>3.35 nm</b>	<b>098°</b>	<b>278°</b>

**10.2 In the event a Mark is missing, a boat shall round the respective GPS coordinates.**

## **11 OBSTRUCTIONS**

**11.1 The following areas are designated as an obstruction:**

**11.1.1 The Houston Ship Channel. Reference is made to NOAA Electronic Navigational Chart US5TX54M, Upper Galveston Bay-Houston Ship Channel-Dollar Pt. to Atkinson (1/29/2021).**

## **12 THE START**

**12.1 Races will be started as a pursuit start based on the respective boat PHRF Rating. Starting times are listed in SI Addendum #2.**

**12.2 The starting line is between a staff displaying an orange flag on the signal vessel at the starboard end and the course side of the port-end starting mark.**

**12.3 Boats shall avoid the starting area prior to their start time as to not interfere with other starts.**

**12.4 If any part of a boat's hull is on the course side of the starting line at her starting time and she is identified, the race committee may attempt to hail her sail number. Failure to hail her number, failure of her to hear such a hail, or the order in which boats are hailed will not be grounds for a request for redress. This changes RRS 61.**

**12.5 A boat that does not start within 10 minutes after her starting time will be scored Did Not Start (DNS) without a hearing.**

## **13 THE FINISH**

**13.1 The finishing line is between a staff displaying a blue flag on the RC vessel and the course side of a nearby finishing mark.**

**13.2 If the race committee is absent when a boat finishes, she shall report her finishing time, and her position in relation to nearby boats, to the race committee at the first reasonable opportunity. It is recommended you take a photograph of GPS time and coordinates to support.**

## **14 PENALTY SYSTEM**

### **14.1 The first two sentences of RRS 44.1 are changed to:**

A boat may take a One-Turn Penalty when she may have broken one or more rules of Part 2 or Rule 31 in an incident while racing. However, when she may have broken one or more rules of Part 2 while in the zone around a mark other than a starting mark, her penalty shall be a Two-Turns Penalty.

## **15 TIME LIMITS**

**15.1 Boats failing to Finish by 17:00 shall be scored DNF (Did Not Finish) without a hearing.**

## **16 HEARING REQUESTS**

**16.1 The protest time limit is 60 minutes after the last boat finishes. This time will be placed on the official notice board.**

**16.2 Any boats planning on filing a hearing request shall notify the Race Committee via VHF radio prior to leaving the finish area.**

**16.3 Paper hearing request forms are available from the GBCA clubhouse, however electronic filings using the US Sailing app are preferred by the protest committee. Please forward all filings to [may.chris.w@gmail.com](mailto:may.chris.w@gmail.com).**

**16.4 Notices of protests and the hearing schedule will be posted no later than 30 minutes after the close of the deadline for filing protests. Notices and schedules will be posted using the Regatta Network official notice board at: [https://www.regattanetwork.com/event/29207#\\_home](https://www.regattanetwork.com/event/29207#_home)**

## **17 SCORING**

**17.1 One race is scheduled and shall constitute the regatta.**

**17.2 The Low Point System of RRS Appendix A will apply.**

## **18 SAFETY REGULATIONS**

**18.1 [DP] A boat that retires from a race shall notify the race committee at the first reasonable opportunity by cell phone and/or text message.**

**18.2 [NP] Boats shall check in with the Race Committee Signal boat and be acknowledged before the first race of each day.**

## **19 EQUIPMENT AND MEASUREMENT CHECKS**

**19.1 A boat or equipment may be inspected at any time for compliance with the class rules, notice of race and sailing instructions.**

## **20 OFFICIAL VESSELS**

**20.1 Official vessels will be identified with GBCA burgee.**

## **21 TRASH DISPOSAL**

**21.1 [NP] Trash may be placed aboard official [or support person] vessels, or properly disposed ashore.**

## **22 PRIZES**

**22.1 Prizes will be given for 1<sup>st</sup> through 3<sup>rd</sup> places in each class based on number of entries as detailed in the Notice of Race. Additional prizes may be awarded at the discretion of the race committee.**

**22.2 The competitor that sails the course and is first to finish in either the PHRF Double Spin, or PHRF Double Non-Spin shall be awarded the J. Kevin Box Memorial Perpetual Trophy.**

## **23 RISK STATEMENT**

**23.1 RRS 3 states: ‘The responsibility for a boat’s decision to participate in a race or to continue to race is hers alone.’ By participating in this event each competitor agrees and acknowledges that sailing is a potentially dangerous activity with inherent risks. These risks include strong winds and rough seas, sudden changes in weather, failure of equipment, boat handling errors, poor seamanship by other boats, loss of balance on an unstable platform and fatigue resulting in increased risk of injury. **Inherent in the sport of sailing is the risk of permanent, catastrophic injury or death by drowning, trauma, hypothermia or other causes.****

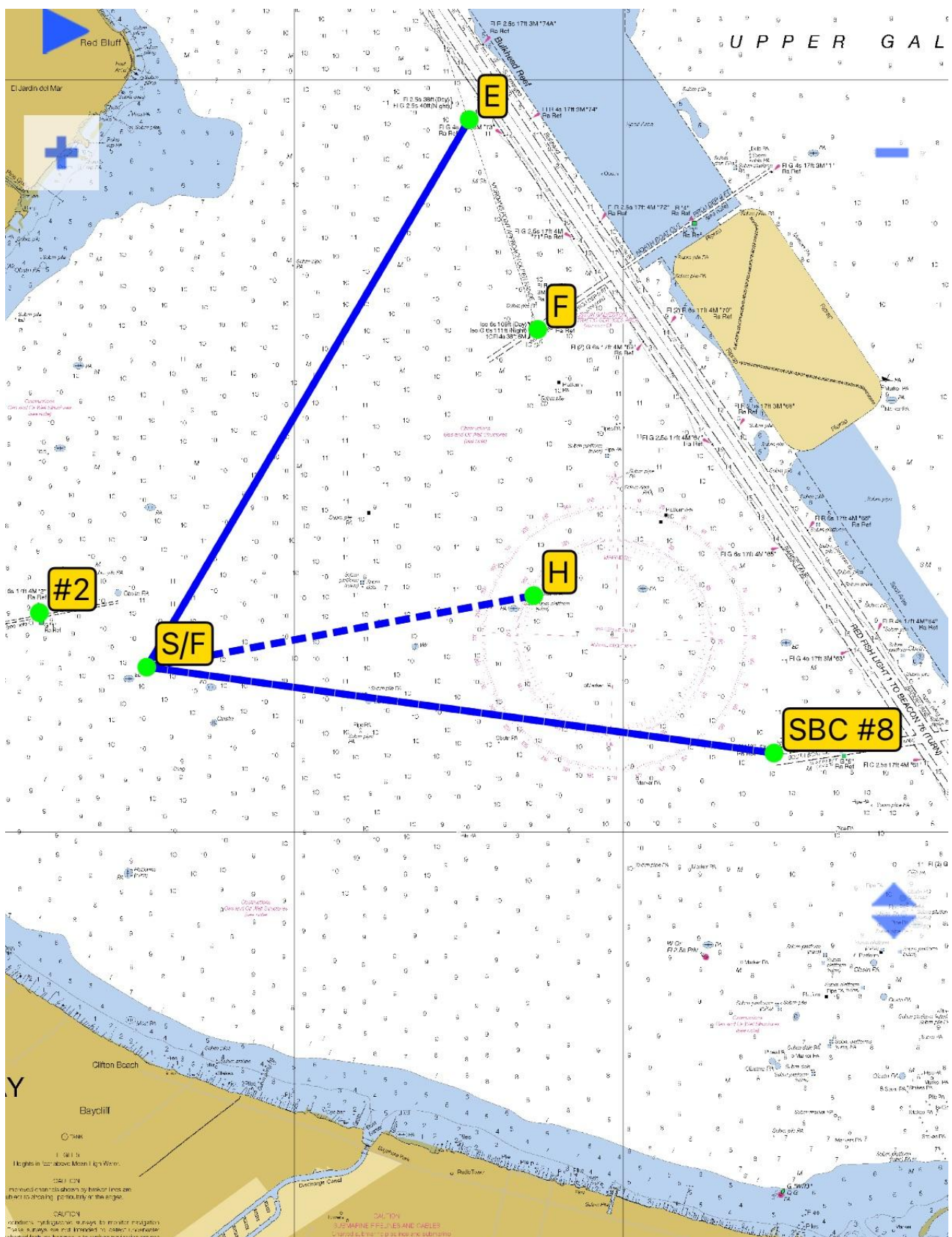
## **24 INSURANCE**

**24.1 Each participating boat shall be insured with valid third-party liability insurance with a minimum cover of \$300,000 per incident or the equivalent.**

**RC contact(s): Kevin Hayes 281-960-4329, or**

**Chris May 713-591-8115**

## SI Addendum #1 – Racing Area



## SI Addendum #2 – Starting Times

<u>Boat Name</u>	<u>Class</u>	<u>Model</u>	<u>Rating</u>	<u>Start Time</u>
Icarus	Multihull	Corsair Marine/760	39	11:57:34 AM
Deja Vu	PHRF Non-Spin	Carrol Marine / 1D35	48	11:54:55 AM
Big D	PHRF Non-Spin	C&C / 121	109	11:37:00 AM
GOOD NEWS	PHRF Non-Spin	TPI / Alerion Express	117	11:34:39 AM
St. Somewhere	PHRF Non-Spin	Jeanneau / Sun Odyssey	121	11:33:29 AM
Toccata	PHRF Spin	J boats / J/27	126	11:32:01 AM
Mucho Gusto	PHRF Non-Spin	Beneteau / First 36s7	132	11:30:15 AM
Bohemian Mermaid	PHRF Spin	Beneteau / 440	135	11:29:22 AM
Hobgoblin	PHRF Non-Spin	Hunter / Legend 40	142	11:27:19 AM
Sloop Dog	PHRF Non-Spin	Hunter / 376	151	11:24:40 AM
Student Driver	PHRF Spin	J Boat / J-22	174	11:17:55 AM
Flyer	PHRF Non-Spin	Catalina / 30TM	193	11:12:20 AM
Vixen	PHRF Non-Spin	Catalina / 30	199	11:10:34 AM
Serenity Now	PHRF Non-Spin	Capital Yachts / Newport 30 MKIII	214	11:06:10 AM
Wind Rose	PHRF Non-Spin	Beneteau / 323	218	11:05:00 AM