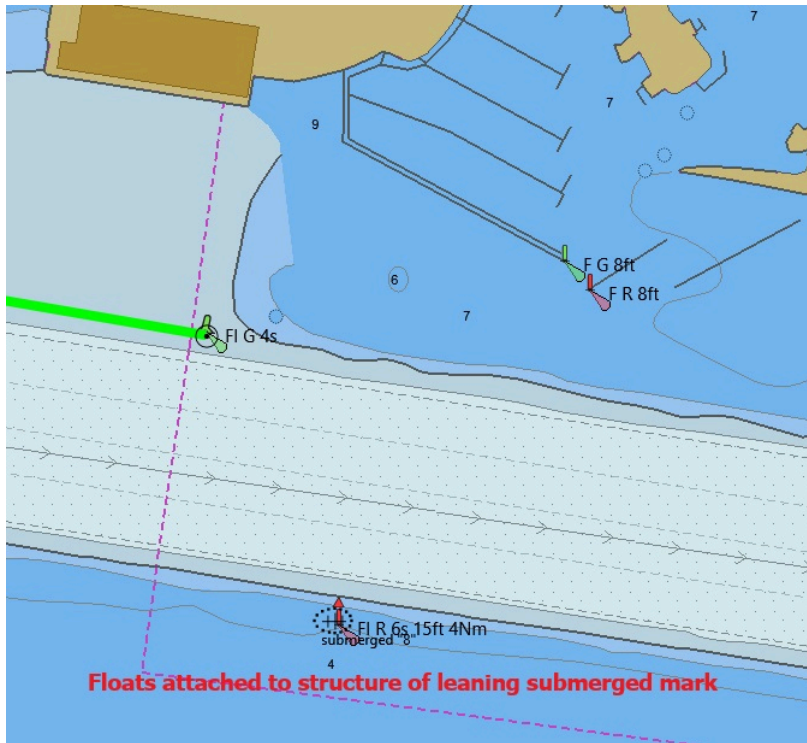
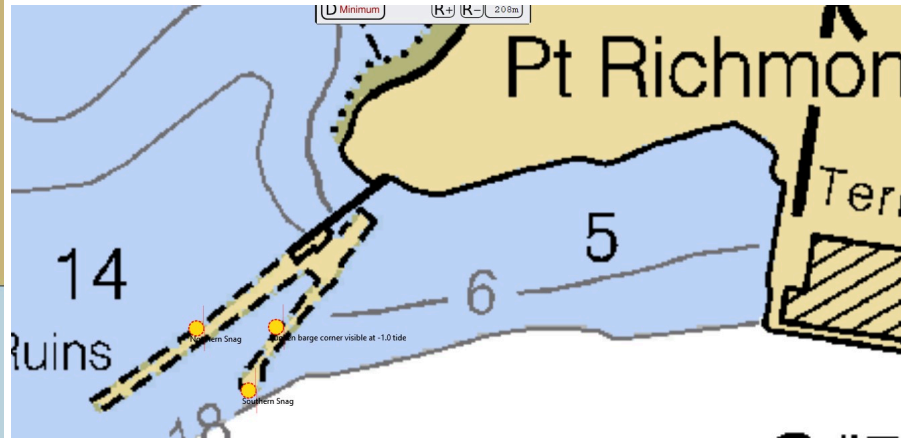
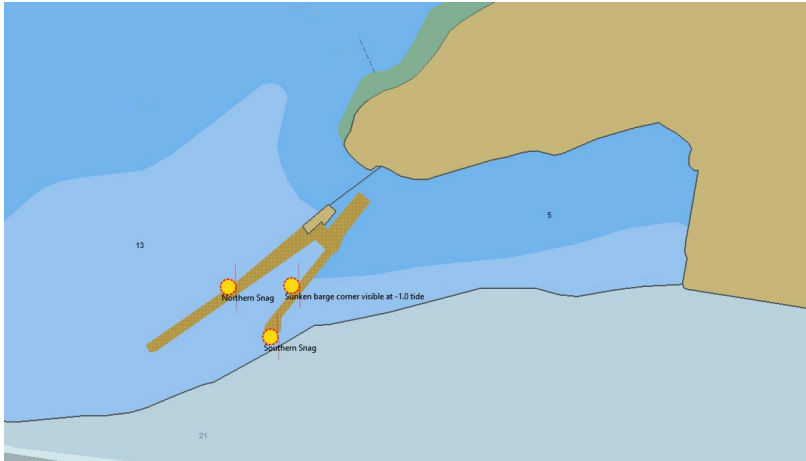


Compilation of local Marine Hazards

Hazard at "8", just across from the RYC entrance: the marker is laying down at an angle, south of the temporary buoy. The floats are tied to the top structure of the submerged marker. The light cage shows at -0.5ft tide



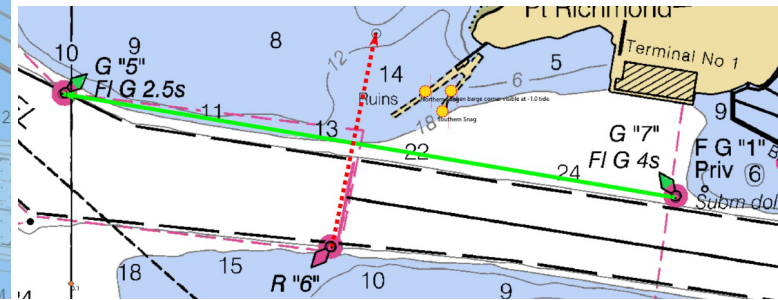
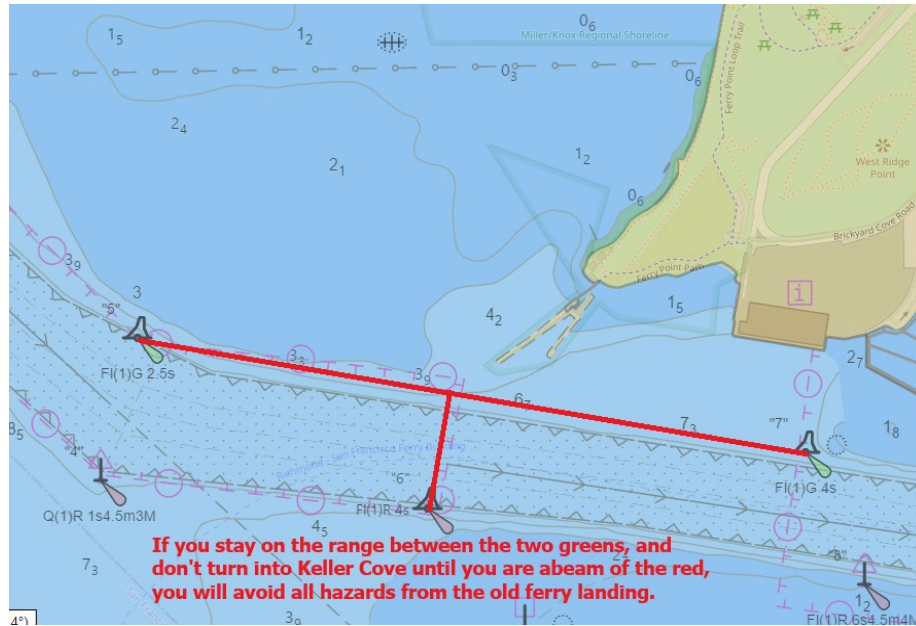
Remains of ferry landing demolition: There are two snags which are visible at about a -1.0ft tide. They are marked by orange floats. The northeastern corner of a sunken barge is marked with a dock bumper closer in towards the remaining part of the landing.



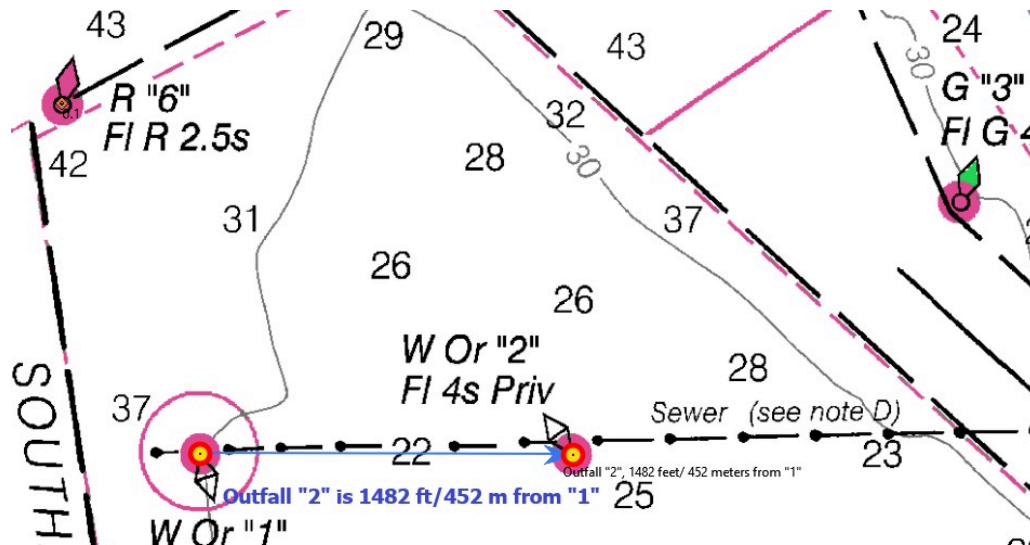
North snag and South snag. Tide is 7ft, no slack in line to snag. You can see a small white float indicating the position of the sunken barge in the photo on the right.



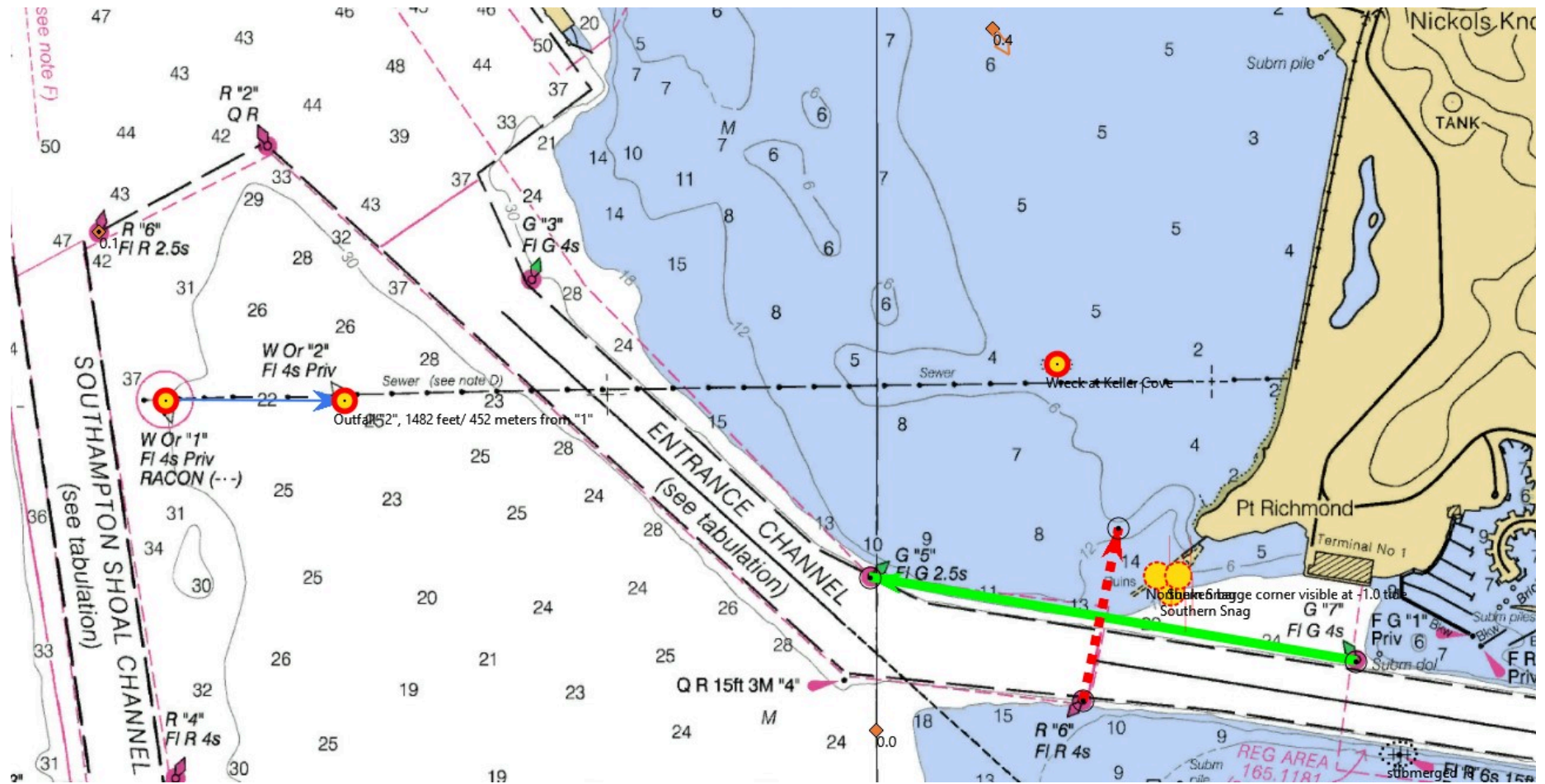
Recommended transit past Ferry Point: See below



Richmond sewage outfall pipe markers: "2" has no light and can be submerged during high tide and strong currents: The photo was taken at a 6.8ft tide, 0.8kt current. You can see "1" in the background.



Combined hazards on the chart. Note the Wreck in Keller Cove.



The wreck at Keller Cove: It is sitting near vertical, bow up. The tip of the bow shows at about a 0ft tide.

