

Venetian Cup

Venice Youth Boating & Venice Yacht Club

Organizing Authorities

April 26, 2025

VHF Ch 69

SAILING INSTRUCTIONS C420/HS420/ILCA 4,6, 7

The notation (NP) denotes that a breach of this rule will not be grounds for a protest by the boat. This change supplements RRS 60.1.

1. RULES

- 1.1. The regatta will be governed by the rules as defined in *The Racing Rules of Sailing* (RRS) 2025-2028.
- 1.2. Appendix U will apply. This replaces RRS 26.

2. NOTICES TO COMPETITORS

- 2.1. Notices to competitors will be posted on the official noticeboard located at the VYC Registration Area.

3. CHANGES TO SAILING INSTRUCTIONS

- 3.1. Any change to the sailing instructions will be posted before 0900 on the day it will take effect.
- 3.2. Changes made to the schedule of races for the day will be posted by 1800 the day before it shall take place.

4. SIGNALS MADE ASHORE

- 4.1. Signals made ashore will be displayed on the VYC flagpole.

5. SCHEDULE OF RACES

Saturday, April 26th:

0730-0830	Coaches Check in their teams – Tent at VYC Pool/Tiki
0900	Competitors Meeting
1027	First warning
1500	No warning after this time

Awards to follow racing on the lawn beside the Y=VYC Tiki Bar

- 5.1. To alert boats that a race or sequence of races will begin soon, the orange starting line flag will be displayed with one sound at least **1 minute** before a warning signal is made to alert boats that a race will begin soon.
- 5.2. As many races as possible are scheduled. One race will constitute a regatta.

6. CLASS FLAG

- 6.1. C420/HS420 Class Flag – Blue 420 Logo on a White Background
- 6.2. ILCA 4,6&7 Class Flag – Red Laser Logo on a White Background

7. COURSE

- 7.1. The Course diagrams are attached in Attachment A. They show the courses, the order in which marks are to be passed, and the side on which each mark is to be left.
- 7.2. The course to be sailed will be posted on the RC vessel at or before the warning signal.
- 7.3. If one of the leeward gate marks is missing, boats shall leave the remaining leeward mark to port.

8. MARKS

- 8.1. Start mark will be an orange cylinder
Finish Mark will be an orange cylinder
Windward mark will be an orange tetrahedron
Offset will be a large yellow cylinder
Gate marks will be florescent orange balls
- 8.2 ILCA 4 will have a shorter course; All other marks are the same as described in 8.1.
Windward mark will be large orange cylinder
Offset mark will be small yellow cylinder

9. THE START

- 9.1. Races will be started using sequence in Appendix U, which replaces RRS 26.

- 9.2. The starting line will be between the staff displaying the orange flag on the signal boat(RC) and the course side of the starting mark, an orange tetrahedron.
- 9.3. (NP) A boat that does not start within 4 minutes after starting signal will be scored as DNS. This supplements RRS A5.1.

10. CHANGES OF THE NEXT LEG OF THE COURSE

- 10.1 Marks will be moved to adjust for conditions only between races.

11. THE FINISH

- 11.1 The finishing line will be between a staff displaying a blue flag on the signal boat and the course side of the finish mark, a white ball.

12. TIME LIMITS

- 12.1 The following time limits will apply:

-Racing Time Limit is 60 minutes – Time Limit for the first boat to sail the course and finish.

-Finishing Window is 20 minutes – Time limit for the boats to finish after the first boat sails the course and finishes.

- 12.2 (NP) Boats sailing the course and failing to finish within the finishing window of the first boat in her class (that sails the course and finishes) will be scored TLE, without a hearing. This changes RRS 35, A5.1 and A5.2.

13. PROTESTS AND REQUESTS FOR REDRESS

- 13.1 The protesting boat shall inform the other boat at the first reasonable opportunity AND inform the signal boat of a protest. RRS 61.1

- 13.2 Protest forms are available at the race office (by VYC pool). Protests and request for redress or reopening shall be delivered there within the appropriate time limit.

- 13.3 The protest time limit is 30 minutes after the last race committee boat has docked. RC will post the docking time on the Official Notice Board.

- 13.4 Notices will be posted no later than 15 minutes after the protest time limit to inform competitors of hearings in which they are parties or named as witnesses and where they hearings will be held.

- 13.5 Notices of protests by the race committee, technical committee or protest committee will be posted to inform boats under RRS 60.2 (a)(2).

14. SCORING

- 14.1 The Low Point System of Appendix A will apply.

14.2 When fewer than five (5) races have been completed, a boats series score will be the total of her race scores. When five (5) or more races have been completed, a boats series score will be the total of her race scores excluding her worst score. This changes RRS A2.1.

14.3. (NP) Boats scored TLE will be scored points equal to the number of boats which sail the course and finish within the time limit plus two points by the Race Committee without a hearing, not to exceed the points for DNF. This changes RRS 35, A5.2, and A10.

15. SAFETY REGULATIONS

15.1 Check-in with the Signal Boat before the initial warning signal of the first race of the day by sailing near the Signal Boat on a starboard tack and hailing your sail number until acknowledged by Signal Boat. Failure to check in may result in a penalty.

15.2 (NP) Failure to comply with 15.1 shall result in, without a hearing, a boat having 2 pts added to her position in her last completed race of the day. This changes RRS 63.1, 64.1, A3, A5 and A11.

15.3 A boat retiring from the race shall notify a Race Committee vessel before leaving the course, or when that is not possible, notify the Race Official immediately upon arriving ashore.

15.4 All competitors shall always wear personal flotation devices while afloat.

16. SUPPORT VESSELS

16.1 Support vessels shall monitor VHF channel 69.

16.2 All support vessels equipped with an emergency cut off switch, the operator shall always wear the associated lanyard when in the vicinity of competitors, the sailing area, and VYBA/VYC/Higel Docks.

16.3 Team leaders, coaches, and other support persons shall stay outside areas where boats are racing from the time of the preparatory signal for the first class to start until all boats have finished or retired or the race committee signals postponement or abandonment.

16.4 All coach boats and other support vessels shall come to the aid of any competitor in distress or requesting assistance.

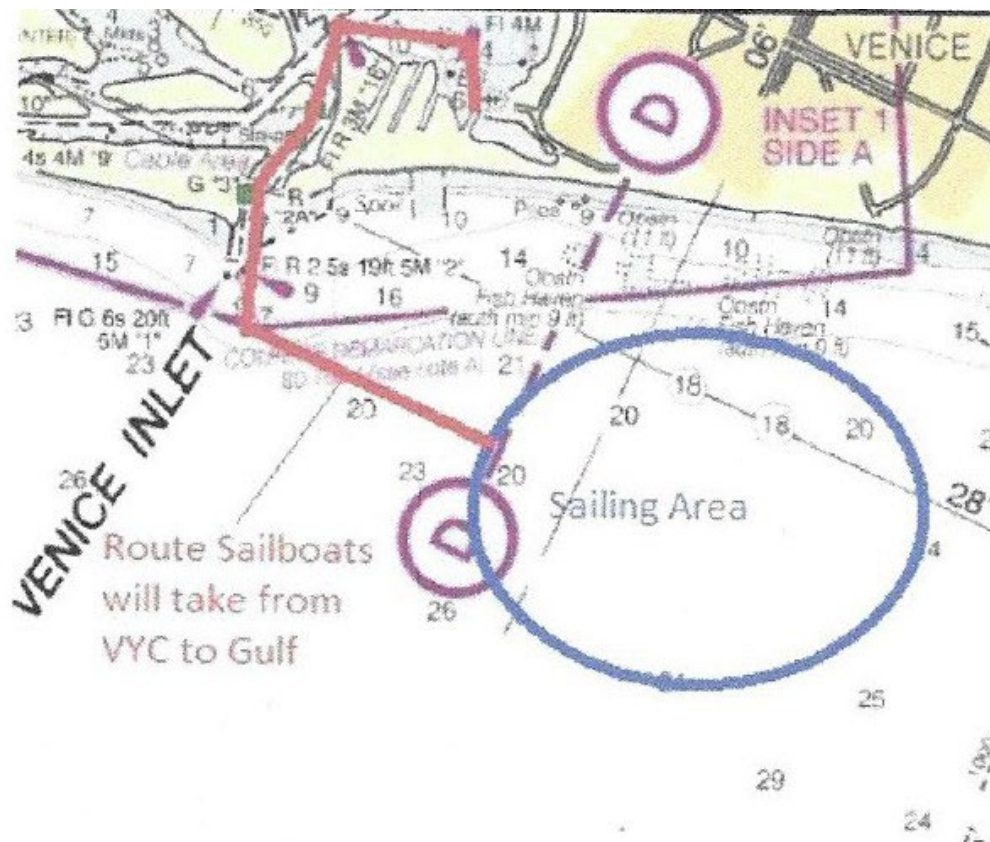
16.5 All support vessels shall comply with US Coast Guard regulations.

17. PRIZES

17.1 Prizes will be given to the top three finishers in each class as stated in the NoR.

RACE AREA

GULF FLEETS



ATTACHMENT A- COURSE

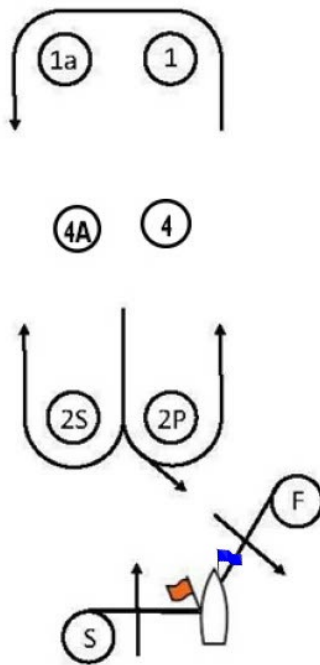
Windward-Leeward Course Diagram, Reaching Finish

Course WL – Windward/Leeward, Reaching Finish

Mark Rounding Order Start – 1 – 1a – 2P – Finish

Course WL2 – Windward/Leeward, Reaching Finish

Mark Rounding Order: Start – 1 – 1a – 2S/2P – 1 – 1a – 2P – Finish



S-Start Pin- Orange Cylinder

F- Finish mark- Orange Cylinder

1-Windward mark- orange Tetrahedron

1a-Offset-Yellow Cylinder

2S/2P-Gate-Flourescent Orange Balls

ILCA 4.7-shortened Course

4-Windward-Large Orange Cylinder

4A-Offset- Small Yellow Cylinder