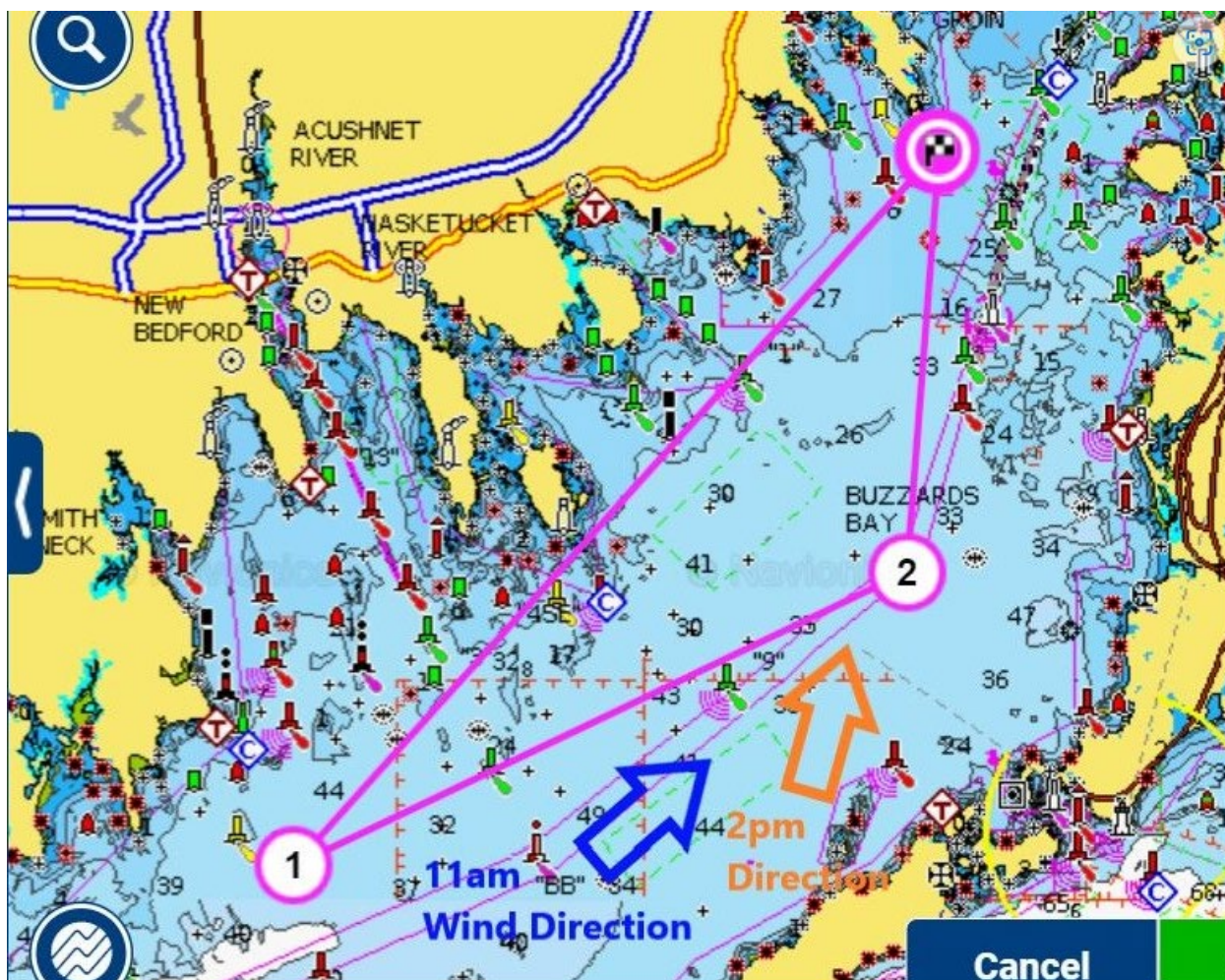


# Corsair Nationals 2025

## Long Distance Courses

### COURSE A – 28.1nm

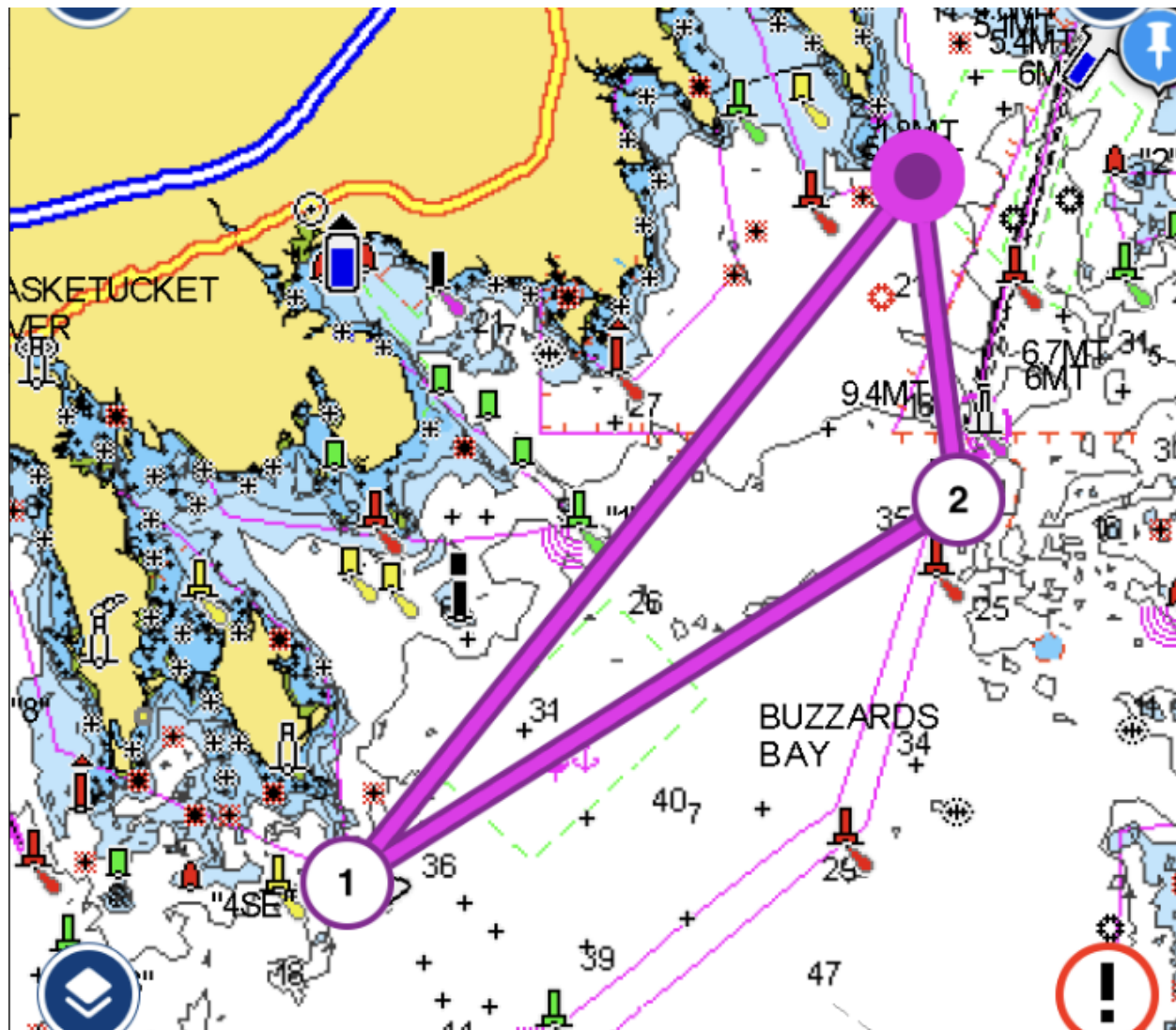
- Starting and Finishing area near Bird Island Bell Buoy #3 (41.40.022N – 70.42.391W)
- Buzzards Bay Lighted Green Bell Buoy #7 Wilkes Ledge - leave to port (41.30.456N – 70.54.322W)
- Buzzards Bay Lighted Red Gong Buoy #10 – leave to port (41.34.431N – 70.43.192W)
- Finish Down Wind in vicinity of start area near Bird Island Bell Buoy #3 (41.40.022N – 70.42.391W)



Wind direction is only provided as an estimate for reference and not to be relied upon

## COURSE B – 16.4nm

- Starting and Finishing area near Bird Island Bell Buoy #3 (41.40.022N – 70.42.391W)
- New Bedford Southeast Approach Bell Buoy 2SE – Leave to port (41.34.085N – 70.48.744W)
- Cleveland East Ledge Light – leave to port (41.37.869N – 70.41.648W)
- Finish Down Wind in vicinity of start area near Bird Island Bell Buoy #3 (41.40.022N – 70.42.391W)





### COURSE C – 9.8nm

- Starting and Finishing area near Bird Island Bell Buoy #3 (41.40.022N – 70.42.391W)
- Nye Ledge Lighted Bell Buoy #1 – Leave to port (41.37.099N – 70.46.159W)
- Cleveland East Ledge Light – leave to port (41.37.869N – 70.41.648W)
- Finish Down Wind in vicinity of start area near Bird Island Bell Buoy #3 (41.40.022N – 70.42.391W)

