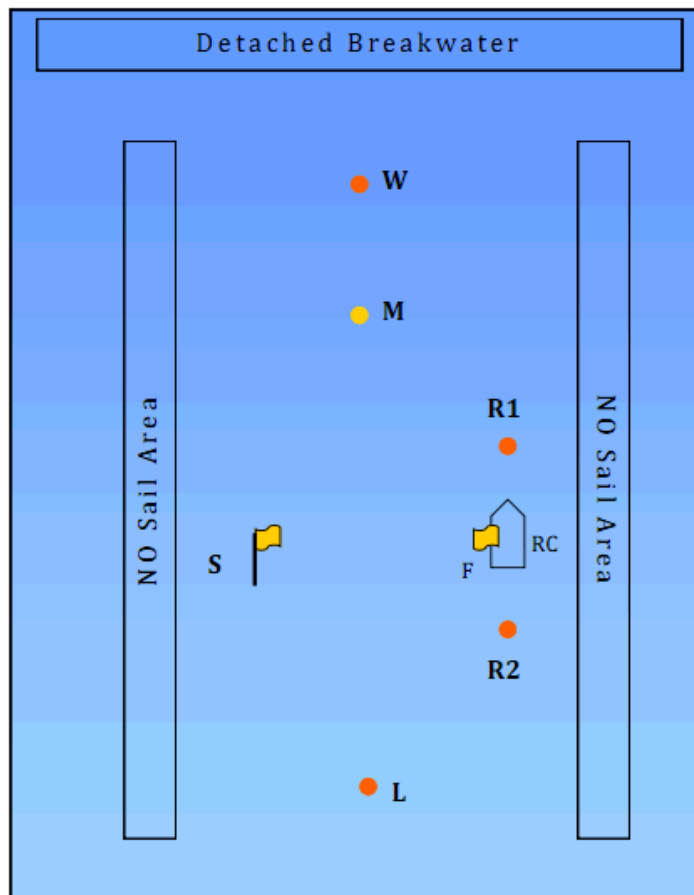




2025 Sunstroke Series Course Chart #10



R1, R2, W, M and L are red, yellow or orange balls or cylinders. S is an orange flag on a staff. All marks are to be left to port unless designated by a lowercase "s". F is an orange flag on the committee boat. The RC may only set one of the R marks each night

**Start line is restricted for course 2, 21, 2D, 3, and 4, boats racing those courses shall not cross between RC and S unless starting or finishing. Boats breaking this rule are subject to penalty from the RC without a hearing*

#	Description	Pennants
1	Start > W > Finish	
11	Start > M > Finish	
2	Start > W > L > Finish*	
21	Start > M > L > Finish*	
2D	Start > L > W > Finish*	
3	Start > W > L > M > Finish*	
4	Start > W > L > M > L > Finish*	
5	Start > Ws > R1s > S > L > Finish	
51	Start > Ms > R1s > S > L > Finish	
6	Start > W > S > R2s > L > Finish	
61	Start > M > S > R2s > L > Finish	
7	Start > W > M > W > Finish	
8	Start > W > R1 > W > Finish	
9	Start > W > S > W > Finish	