

# 2025 Houston Open One Design (HOOD) Regatta



Ensign Region IV Championship  
J/22 Heritage Cup  
J/24 Beasley Cup



September 25-28, 2025

## The Houston Yacht Club

3620 Miramar Drive, Shoreacres, TX 77571  
(281) 471-1255

## SAILING INSTRUCTIONS

As amended Thursday, Sep. 25, 2025 (Changes in Red)

Copies of these Sailing Instructions will not be available at the Competitor's Briefing, it is strongly recommended to print your own from Regatta Network.

The notation [NP] in a rule of the Notice of Race (NoR) or these Sailing Instructions (SI) means that a boat may not protest another boat or request redress for breaking that rule. This changes **RRS 60.1**.

### 1. RULES

- 1.1 The regatta shall be governed by the rules as defined in the *Racing Rules of Sailing*

### 2. NOTICES TO COMPETITORS

- 2.1 Notices to competitors will be posted on the official notice board located in the breezeway adjacent to the HYC Office. An unofficial notice board is located at [www.regattanetwork.com/event/29315](http://www.regattanetwork.com/event/29315).  
2.2 On the water communications by radio will be on VHF 69 for the Division 2 and 72 for Division 1.

### 3. CHANGES TO SAILING INSTRUCTIONS

- 3.1 Any change to the sailing instructions will be posted before 0900 on the day it will take effect, except that any change to the schedule of races will be posted by 2000 on the day before it takes effect.

### 4. SIGNALS MADE ASHORE

- 4.1 Signals made ashore will be displayed from the flagpole at Houston Yacht Club.  
4.2 When flag AP is displayed ashore, '1 minute' is replaced with 'not less than 60 minutes' in the race signal AP. This changes **Race Signals AP**.  
4.3 Signals made ashore shall apply to all Divisions unless a numeral pennant is displayed under it, in such case the signal shall apply to only that Division. This changes RRS "Race Signals."

### 5. SCHEDULE OF RACES

#### 5.1

Day	Date	Time	Event / Activity
Friday	26-Sep.	1100	<b>Ensign Region IV Championship:</b> Warning Signal for the first race, additional races to follow.
Saturday	27-Sep.	1100	<b>Both Divisions:</b> Warning Signal for the first race , additional races to follow.



Sunday	28-Sep.	1100	<b>Both Divisions:</b> Warning Signal for the first race, additional races to follow.
		1400	No Warning Signal after 1400

- 5.2 The total number of races and the number of races per day, for each class, are specified in the Notice of Race Schedule. See: **NoR 7.**

## 6. CLASS FLAGS

- 6.1 Class flags and order of first starts of the day are defined in the addendum, *Class Flags and Order of Starts.*

## 7. RACING AREAS

- 7.1 The location of the racing area is shown in the Notice of Race Addendum, RACE AREA.

## 8. THE COURSES

- 8.1 No later than the warning signal the race committee will designate the course, and it may also display the approximate compass bearing of the first leg.
- 8.2 The course diagrams are shown in the addendum, *Course Diagrams.* The course diagrams show the courses, the order in which each mark is to be passed, and the side on which each mark is to be left.
- 8.3 Boats shall not enter any Ship Channel while racing. Ship channels are *Obstructions.*
- 8.4 At a gate, if only one mark is present, round it leaving it to port.

## 9. MARKS

- 9.1 Marks 1, 2S, 2P are yellow tetrahedrons.
- 9.2 - deleted -
- 9.3 Starting, finishing and Offset marks will be floating shapes.
- 9.4 Change marks will be orange tetrahedrons.
- 9.5 For any Course LS the short Mark 1 will be a yellow ball.

## 10. THE START

- 10.1 Races will be started using RRS 26.
- 10.2 The starting line will be between a staff displaying an orange flag on the race committee vessel and the course side of the starting mark.
- 10.3 The RC may broadcast starting information and countdowns on VHF. Failure to make or receive such broadcasts will not be grounds for redress. This changes **RRS 61.4(b).**
- 10.4 The race committee will attempt to hail recalled boats. Failure to hail her number, failure to hear the hail, or the order of the hails shall not be grounds for redress.
- 10.5 Boats whose warning signal has not been made shall avoid the starting area during the starting sequence for other classes.
- 10.6 A boat that does not start within 4 minutes after her start signal will be scored DNS without a hearing. This changes RRS 35, A5.1 and A5.2

## 11. CHANGE OF THE NEXT LEG OF THE COURSE

- 11.1 To change the next leg of the course, the Race Committee will lay a new mark and remove the original mark as soon as practicable. When in a subsequent change a new mark is replaced, it will be replaced by an original mark.

## 12. THE FINISH

- 12.1 The Finish Line will be between a staff displaying a blue flag on the Race Committee vessel and the course side of the finishing mark.
- 12.2 If the race committee is absent when a boat finishes, she shall report her finishing time, and her position in relation to nearby boats, to the race committee at the first reasonable opportunity.
- 12.3 Flag "A" (ALPHA) displayed with no sound while boats are finishing means "no more racing today".

## 13. TIME LIMITS AND TARGET TIMES

- 13.1 If no boat within a class has passed Mark 1 within 30 minutes, the race shall be abandoned.
- 13.2 The Race Time Limit is 60 minutes for the Division 2 and 90 minutes for the Division 1.
- 13.3 Boats failing to finish within 20 minutes after the first boat sails the course and finishes will be scored Did Not Finish (DNF) without a hearing. This changes RRS 35, 60.5(b), and A5. The RC will lower the **blue** finish line flag when the finishing window is closed.

## 14. PROTESTS AND REQUESTS FOR REDRESS

- 14.1 Hearing request forms are available at the race office. Protests and requests for redress or reopening shall be delivered there within the appropriate time limit.
- 14.2 For each class, the protest time limit is 60 minutes after the race committee boats for each course reaches the dock.
- 14.3 Notices will be posted no later than 30 minutes after the protest time limit to inform competitors of hearings in which they are parties or named as witnesses and where the hearings will be held.
- 14.4 Notices of protests by the race committee, technical committee or protest committee will be posted to inform boats under RRS 60.2(a)(2), 60.2 (b)(3), and 60.2(d).
- 14.5 All boats intending to protest another boat on the racecourse shall advise the finish boat of the intended protest and the name or number of the boat being protested at the first reasonable opportunity after finishing and before leaving the racecourse. Failure to do so shall render the protest invalid. This changes RRS 60.2
- 14.6 U.S. Sailing Prescription to Racing Rule 63.1 does not apply.

## 15. [NP] CHECK IN

- 15.1 Prior to the warning for the first race of each day, each boat shall check-in. "Check-in" means passing on starboard tack, close astern of the Race Committee Signal Boat displaying the code Flag "L" and hailing her sail number and being recognized by the Race Committee.
- 15.2 Boats failing to check-in shall receive a 20% scoring penalty in the first race of the day, without a hearing, in accordance with RRS 44.3 (c).

## 16. SAFETY REGULATIONS

- 16.1 [DP] A boat that retires from a race shall notify the race committee on the water, or, if that is not possible, The Houston Yacht Club office by telephone: **281-471-1255**. Failure to comply with this requirement may result in disqualification from this regatta.
- 16.2 [NP] While racing, except in an emergency, a boat shall not make voice or data transmissions and shall not receive voice or data communication that is not available to all boats.

## 17. DISCLAIMER OF LIABILITY

- 17.1 Competitors participate in the event entirely at their own risk. See **RRS 3. Decision to Race**. The Organizing Authority will not accept any liability for material damage or personal injury or death sustained in conjunction with or prior to, during or after the regatta.
- 17.2 Refer to the Notice of Race, **NoR 13. RISK STATEMENT**.

## 18. FURTHER INFORMATION

- 18.1 For further information, visit Houston Yacht Club at [www.houstonyachtclub.com/hood-regatta](http://www.houstonyachtclub.com/hood-regatta)



## Addendum: Race Area(s)



## Addendum: Class Flags & Order of Starts

For the FIRST RACE of each day, the start order shall be:

(Additional Races, the start order may be changed)

### Division 1

#### CLASS

J/105

J/24

J/22

5.5m

Ensigns

#### FLAG

Pink Flag

J/24 Class Flag

J/22 Class Flag

White Flag

Ensign Class Flag

### Division 2

#### CLASS

Lightning

Melges 15

Sunfish

Catalina 22

#### FLAG

Lightning Class Flag

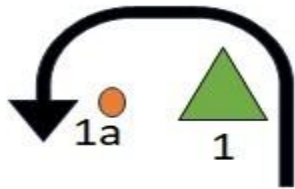
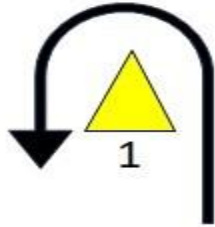
Melges 15 Class Flag

Purple Flag

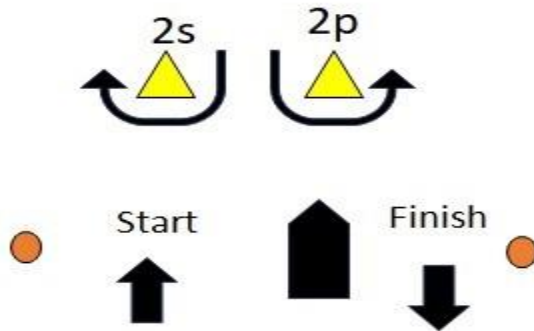
Light Blue

## Addendum: Course Diagrams

### COURSE LS

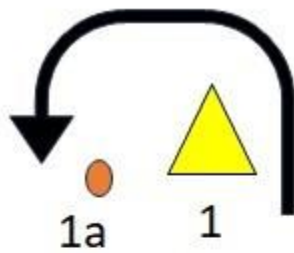


Course	Windward/Leeward with Leeward Gate, Leeward Finish
Signal	Mark Rounding Order
1	Start - 1 - Finish
2	Start - 1 - 2s/2p - 1 - Finish
3	Start - 1 - 2s/2p - 1 - 2s/2p - 1 - Finish
4	Start - 1 - 2s/2p - 1 - 2s/2p - 1 - 2s/2p - 1 - Finish

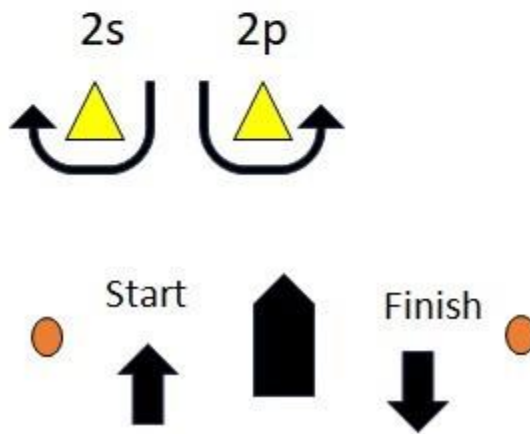




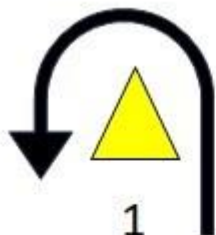
## COURSE LA



Course LA	Windward/Leeward with Leeward Gate, Leeward Finish
Signal	Mark Rounding Order
LA1	Start - 1 - Finish
LA2	Start - 1 - 2s/2p - 1 - Finish
LA3	Start - 1 - 2s/2p - 1 - 2s/2p - 1 - Finish
LA4	Start - 1 - 2s/2p - 1 - 2s/2p - 1 - 2s/2p - 1 - Finish



## COURSE L



Course L	Windward/Leeward, Leeward Finish
Signal	Mark Rounding Order
L1	Start - 1 - Finish
L2	Start - 1 - 2 - 1 - Finish
L3	Start - 1 - 2 - 1 - 2 - 1 - Finish
L4	Start - 1 - 2 - 1 - 2 - 1 - 2 - 1 - Finish

