



2025 A-CLASS CATAMARAN ADMIRAL'S CUP

March 21 - March 23, 2025
Davis Island Yacht Club, Tampa, FL

Sailing Instructions

1. RULES

The regatta will be governed by the rules as defined in *The Racing Rules of Sailing*, including Appendix T (Arbitration) and the IACA Championship Rules unless modified herein or in the Notice of Race.

2. CHANGES TO SAILING INSTRUCTIONS

Any change to the sailing instructions will be posted before 0900 on the day it will take effect, except that any change to the schedule of races will be posted by 2000 on the day before it will take effect.

3. COMMUNICATIONS WITH COMPETITORS

- 3.1 Notices to competitors will be posted on the online Official Notice Board on DIYC's west wall downstairs.
- 3.2 On the water, the race committee intends to monitor and communicate with competitors via VHF radio on channel 72.
- 3.3 While racing, from the first warning signal until the end of the last race of the day, a boat shall not make or receive voice or data communications that are not available to all boats.

4. SIGNALS MADE ASHORE

- 4.1 Signals made ashore will be displayed from the flagpole at the west end of the property.
- 4.2 When flag AP is displayed ashore, '1 minute' is replaced by 'not less than 45 minutes' in the race signal.

5. SCHEDULE OF RACES

The scheduled time of the first warning signal is at 1100 each day, except for Friday, March 21 when the scheduled time is 1300.

6. CLASS FLAG

The class flag will be the A-Class flag.

7. RACING AREA

The racing area will be on Hillsborough Bay approximately 1-2 miles south of the Clubhouse, as shown in Attachment A.

8. THE COURSE

- 8.1 The diagram in Attachment B shows the course, including the approximate angles between legs and the order in which marks are to be passed.
- 8.2 If only one leeward mark is present it shall be rounded to port.
- 8.3 The approximate magnetic bearing and distance in nautical miles to the first mark will be displayed from the race committee signal vessel prior to the warning signal for each race. An example is shown below:

270	Approx magnetic bearing to weather mark
1.2	1.2 nm to weather mark

9. MARKS

- 9.1 Windward and leeward marks will be yellow inflatables. The offset mark will be small orange ball. The start/finish marks will be a green inflatable and an RC vessel.
- 9.2 New marks, as provided in SI 11, will be orange inflatables.

10. THE START

- 10.1 The starting line will be between a staff displaying an orange flag on the race committee signal vessel at the starboard end and the course side of a port end starting mark.
- 10.2 To indicate that a race or series of races will be starting soon, the orange flag will be displayed at least five (5) minutes before the warning signal. A series of short sound signals will be made approximately 20-30 seconds before the warning signal.
- 10.3 The race committee will attempt to hail the sail numbers of OCS boats after the starting signal.
- 10.4 Lack of hail, the failure of any boat to hear the hail, the timeliness or the order of such hails shall not be considered an improper act or omission of the race committee.
- 10.5 Boats may not start more than five (5) minutes after the starting signal.
- 10.6 There will be no races started if the race committee measures the wind above 20 knots or below 5 knots sustained for over 5 minutes.

11 CHANGE OF THE NEXT LEG OF THE COURSE

To change the next leg, the race committee will lay a new mark (or move the finishing line) and remove the old mark as soon as practicable.

12 THE FINISH

The finishing line will be between a staff displaying a blue flag on a race committee vessel and the course side of the finishing mark.

13 TIME LIMITS

- 13.1 The time limit for the first boat to sail the course and finish is 90 minutes.
- 13.2 Boats still racing more than 40 minutes after the first boat in its Division sails the course and finishes will be scored DNF. This changes rules 35, A4, and A5.

14 HEARING REQUESTS

- 14.1 Hearing request forms are available at the Regatta Room. Forms shall be delivered there within 30 minutes after the race committee finish vessel docks. The docking time will be posted on the Official Notice Board.
- 14.2 Notices will be posted within 15 minutes after the protest time limit to inform competitors of hearings in which they are parties or named as witnesses. Protests will be heard in the approximate order of receipt.

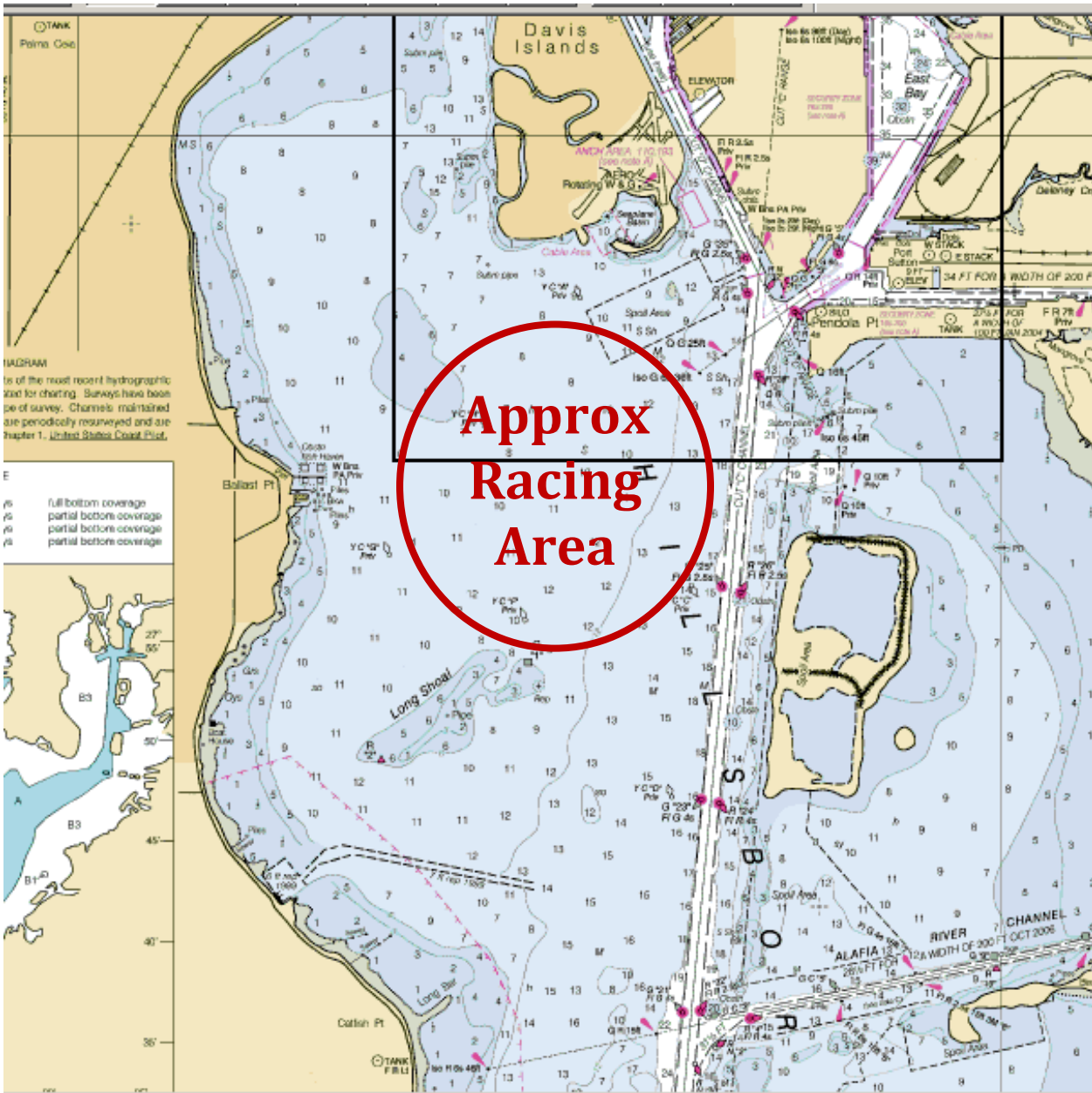
15 SAFETY

- 15.1 Prior to the warning signal for the first race of each day in which it intends to compete, each boat is requested to sail by the race committee signal vessel and hail its sail number.
- 15.2 A boat retiring from a race or leaving the racing area early shall promptly notify the race committee either by hail, VHF, or by telephone to the Clubhouse at (813) 251-1158.
- 15.3 Each boat shall have on board a minimum 10-meter length of line of sufficient diameter and strength to be used as an emergency tow line.

Event Chair: OH Rodgers, ohrodgers@gmail.com

PRO: Eric Robbins, EricLaser@aol.com

Attachment A – Approximate Racing Area



Attachment B – Course Diagram

