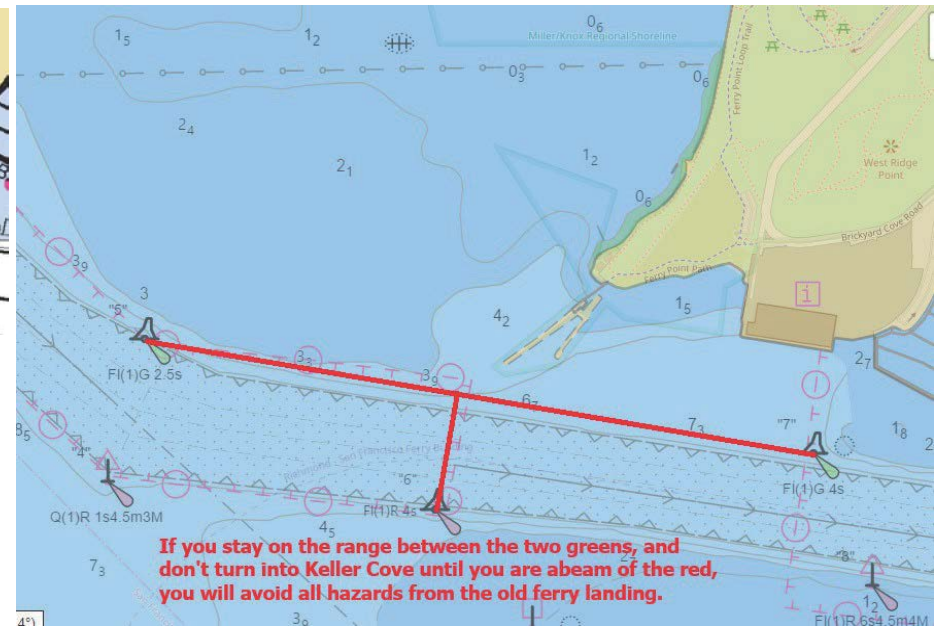


Marine Hazards in the Vicinity of Richmond YC

Update on local marine hazards 29MAY2025

There have been a couple of groundings recently (that I am aware of), so I thought it was time for an update. A minus tide yesterday made it possible to get some good photos of the sunken barge at Ferry Point in Richmond. This barge has been there for a long time, safely hidden by the guide piles from the old ferry landing. Since the removal of these guide piles, sailors have had nothing keeping them from cutting the corner and impacting the sunken barge. The recommended transit (as published since January of this year) past this area is below. **Navigate this area as if the ferry guide piles still exist.**

Recommended transit past Ferry Point:



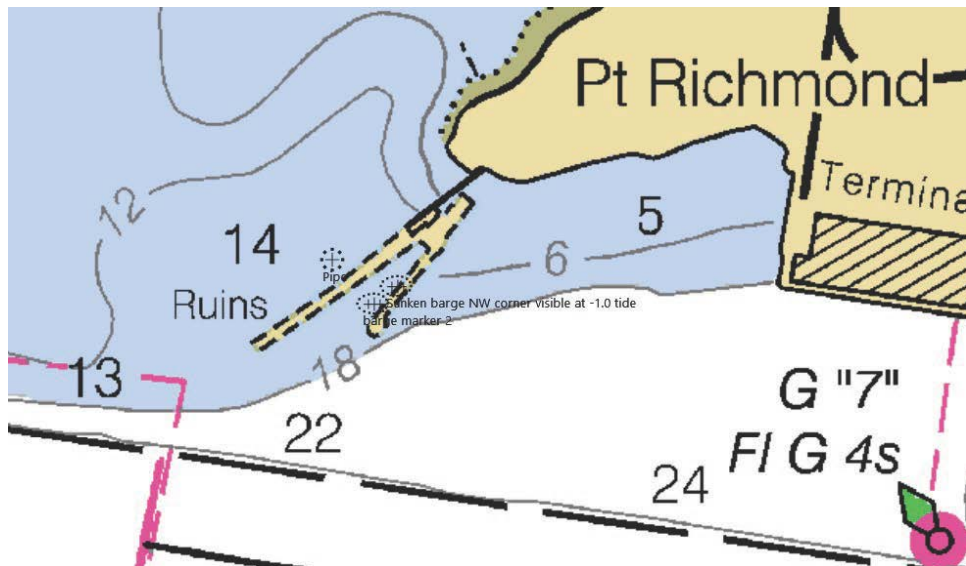
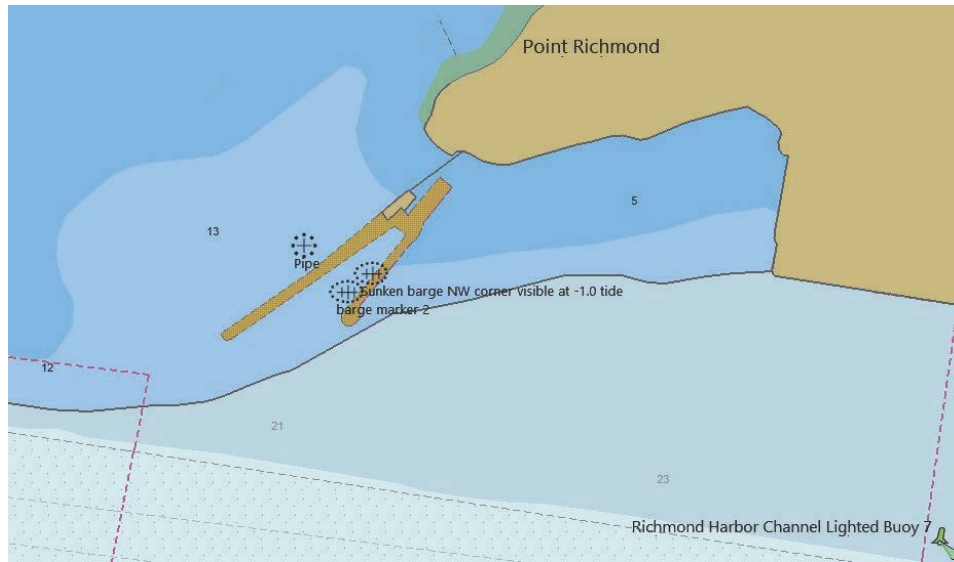
Sunken barge: A second mark has been laid along a SW line formed by the side of the barge. The mark was laid at the point where the deck of the barge drops below the mud line, at a depth of -7.0 ft MLLW. **Do not assume there is clear water between OR beyond these marks.** Again, **navigate this area as if the ferry guide piles still exist.**



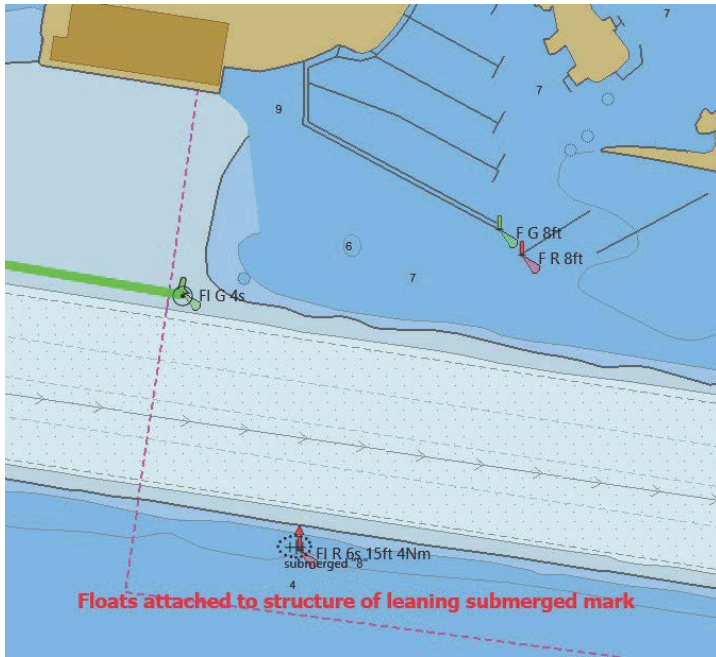
Close-up of the bitt on the NW corner of the barge, and a new obstruction (pipe) found:



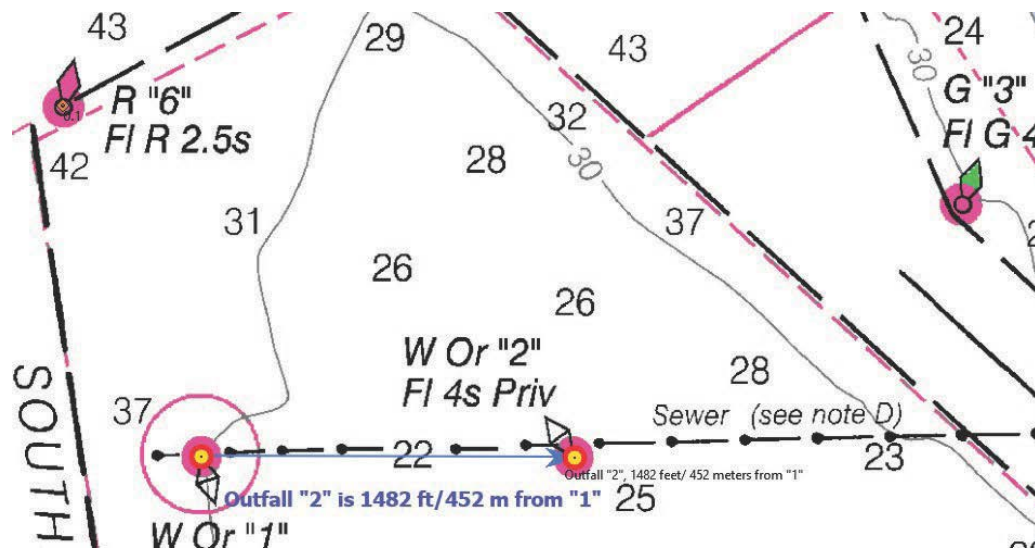
Approximate charted positions of marks: Pipe $37^{\circ} 54.5217' \text{ N}$, $122^{\circ} 23.5163' \text{ W}$; barge marker 2 $37^{\circ} 54.5019' \text{ N}$, $122^{\circ} 23.4940' \text{ W}$; Bitt at NW corner of barge $37^{\circ} 54.5101' \text{ N}$, $122^{\circ} 23.4804' \text{ W}$



Hazard at "8", just across from the RYC entrance (still exists): the damaged channel marker is lying down at an angle, south of the temporary buoy. The floats are tied to the top structure of the submerged marker. The light cage shows at -0.5ft tide

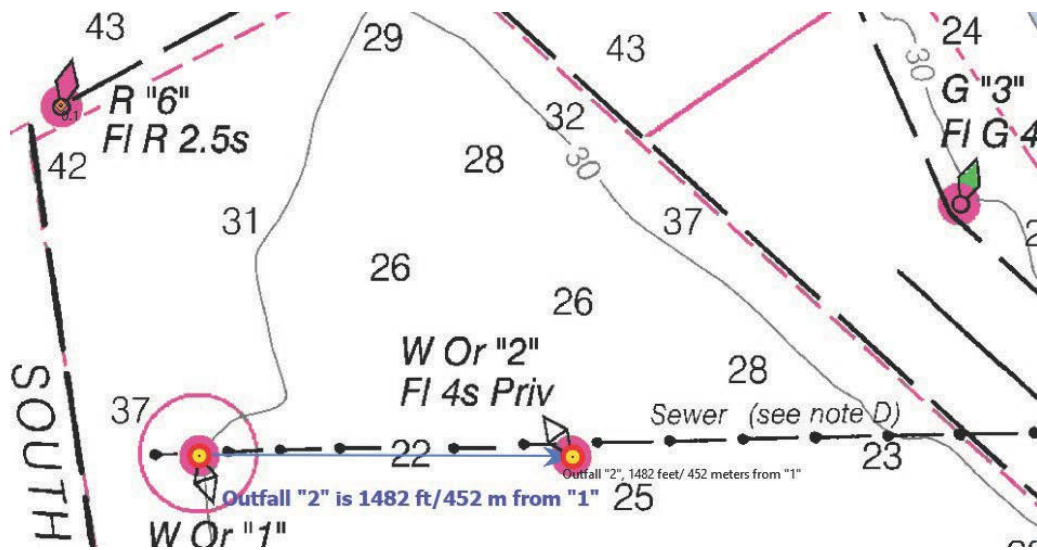


Richmond sewage outfall pipe markers: "2" has no light and can be submerged during high tide and strong currents (still exists): The photo was taken at a 6.8ft tide, 0.8kt current. You can see "1" in the background.



Richmond outfall marker "2" update 30MAY2025

The Richmond outfall marker "2," the one that goes underwater during strong tides, was removed today for service/replacement. It appears that it is being replaced with a similar spar-type floating marker, so expect to see it bent over in a tide as before.



Here are some photos of the removal:



You can see the replacement just behind on the barge. Same type.



The wreck at Keller Cove (still exists) : It is sitting near vertical, bow up. The tip of the bow shows at a 0ft tide.



Combined hazards on the chart:

