



2025 Battleship Texas Regatta

April 26-27, 2025

The Organizing Authority is:

The Houston Yacht Club

3620 Miramar Drive, Shoreacres, TX 77571

(281) 471-1255

SAILING INSTRUCTIONS

Revision 1 dated 4/25/2025 – changes in RED

Copies of these Sailing Instructions will not be available at the Competitor's Briefing, it is strongly recommended to print your own from Regatta Network.

1. RULES:

- 1.1. The regatta shall be governed by the rules as defined in the Racing Rules of Sailing 2025-2028 (RRS).
- 1.2. The notation "[NP]" in a rule of the sailing instructions (SIs) means that a boat may not protest another boat for breaking that rule. This changes RRS 60.1.

2. CHANGES TO SAILING INSTRUCTIONS:

- 2.1. Any change to the sailing instructions will be posted before 0900 on the day it will take effect, except that any change to the schedule of races will be posted by 2000 on the day before it will take effect.
- 2.2. Changes to a sailing instruction may be made on the water by the display of the L Flag on the Signal Boat and hail on the appropriate VHF channel in accordance with RRS 90.2(c). Each competitor will sail past the Signal Boat on starboard tack and acknowledge the change.

FOR BOATS IN DIVISION 2 ONLY: There will be no oral changes to the sailing instructions.

3. COMMUNICATIONS WITH COMPETITORS:

- 3.1. Notices to competitors shall be posted on Regatta Network: regattanetwork.com/event/29413.
- 3.2. Notices pertaining to protest time limits, hearings, etc. per SI 17.2, 17.3, 17.4 and 17.5, will be posted on the "HYC Race Information" official notice board at the entrance to the breezeway adjacent to the offices of The Houston Yacht Club.
- 3.3. On the water, the race committee intends to communicate with competitors on VHF radio:
 - (a) Channel 68 for the Division 1
 - (b) Channel 72 **or orally** for the Division 2
- 3.4. [NP] While racing, except in an emergency, a boat shall not make voice or data transmissions and shall not receive voice or data communication that is not available to all boats.

4. SIGNALS MADE ASHORE:

- 4.1. Signals made ashore will be displayed from the flagpole at Houston Yacht Club.
- 4.2. When flag AP is displayed ashore, '1 minute' is replaced with 'not less than 60 minutes' in Race Signals AP.
- 4.3. Signals made ashore shall apply to all Divisions unless the following numeral pennant is displayed under it, in such case the signal shall apply to only that Division; number 1 for Division 1, number 2 for Division 2. This changes RRS "Race Signals."

5. SCHEDULE:

Saturday, April 26

1100	First Warning Signal, All Classes
Saturday post-race	Entertainment - Poolside and at the Porthole.
1800	Battleship Texas Charity Dinner and Auction

Sunday, April 27

1000	First Warning Signal, all Classes
1430	No Warning Signal after 2:30 PM, all Classes
Sunday post-race	Awards presentation at the HYC Clubhouse Ballroom, approximately 1½ hours after the Race Committee enters the HYC Harbor. Results may be delayed pending protests.

Scheduled Races per Class		Races per Day	
Classes	Total Races	Saturday	Sunday
M15	9 Races	5 Races	4 Races
Sunfish	6 Races	6 Races	0 Races
J22 and J24	7 Races	4 Races	3 Races
PHRF Spinnaker	6 Races	3 Races	3 Races
PHRF Non-Spinnaker	6 Races	3 Races	3 Races
Ensign	5 Races	3 Races	2 Races

6. **CLASS FLAGS:** Class flags and order of first starts of the day are defined in the SECTION B Class Flags and Order of Starts.

7. RACING AREA:

- 7.1. The racing area is shown in SECTION A and identifies the approximate location of Division 1 and Division 2 race areas.
- 7.2. All Classes will sail around designated marks in the area bounded by Morgan's Point to the North, the Bayport Ship Channel to the south, the Houston Ship Channel to the east and the LaPorte shoreline to the west.

8. CHECK IN:

- 8.1. Prior to the warning for the first race of each day, each boat shall check-in with the signal boat for its respective class. Check-in means passing on starboard tack, close astern of the Race Committee Signal Boat displaying the code Flag "L" and hailing her sail number and being recognized by the Race Committee.
- 8.2. Boats failing to check-in shall receive a 20% scoring penalty in the first race of the day, without a hearing, in accordance with RRS 44.3 (c).

9. COURSES:

- 9.1. The course diagrams are shown in SECTION C. The course diagrams show the courses, the order in which marks are to be passed, and the side on which each mark is to be left.
- 9.2. No later than the warning signal, the race committee will designate the course to be sailed.
- 9.3. If a gate mark is missing, the remaining gate mark shall be rounded leaving the mark to port.

10. MARKS:

- 10.1. ~~Division 1: marks will be Yellow tetrahedrons. Offset marks, if used are floating shapes. For Division 1 classes there will be a long and short weather mark (Course LS). The PHRF classes will use the yellow tetrahedron long weather mark. The J24 and J22 classes will use the green tetrahedron short weather mark. Offset marks are floating shapes.~~
- 10.2. Division 2: marks are orange tetrahedrons. Offset marks, if used are floating shapes.

11. OBSTRUCTIONS: Boats shall not enter any Ship Channel while racing. Ship Channels are designated as obstructions.

12. THE START: Races will be started using RRS 26.

- 12.1. The starting line will be between a staff displaying an orange flag from the signal boat on the starboard end and a mark or floating shape at the port end.
- 12.2. Boats whose preparatory signal has not been made shall avoid the starting area during the starting sequence for other boats.
- 12.3. If any part of a boat's hull is on the course side of the starting line at her starting signal and she is identified, the race committee will attempt to hail her sail number. Failure to hail her number, failure of her to hear such a hail, or the order in which boats are hailed will not be grounds for redress. This changes RRS 61.2.
- 12.4. A boat that does not start within 4 minutes after her starting signal will be scored Did Not Start (DNS) without a hearing. This changes RRS 35, A5.1 and A5.2.

13. CHANGE OF THE NEXT LEG OF THE COURSE:

- 13.1. Division 1 change marks are orange tetrahedrons.
- 13.2. Division 2 change marks are yellow tetrahedrons.
- 13.3. Change marks will not have an offset mark.
- 13.4. To change the next leg of the course, the Race Committee will lay a new mark and remove the original mark as soon as practicable. When in a subsequent change a new mark is replaced, it will be replaced by an original mark.

14. THE FINISH:

- 14.1. The Finish Line will be between a staff displaying a BLUE flag on the Race Committee boat and a nearby floating shape.
- 14.2. See SECTION C for the relative positions of the boat and the finish mark.
- 14.3. If the race committee is absent when a boat finishes, she shall report her finishing time, and her position in relation to nearby boats, to the race committee at the first reasonable opportunity.

15. PENALTY SYSTEM: RRS Appendix V, provisions 1 and 2 are in effect.

16. TIME LIMITS:

- 16.1. The Mark 1 Time Limit, Race Time Limit (see RRS 35), and the Finishing Window are shown in the table below.

<u>Class</u>	<u>Mark 1 Time Limit</u>	<u>Race Time Limit</u>	<u>Finishing Window</u>
Division 1	30 minutes	90 minutes	20 minutes
Division 2	30 minutes	60 minutes	15 minutes

- 16.2. If no boat in a class has passed the first mark within the Mark 1 Time Limit, the race shall be abandoned for that class.
- 16.3. The Finishing Window is the time for boats to finish after the first boat in a class sails the course and finishes. Boats failing to finish within the Finishing Window, and not subsequently retiring, penalized, or given redress, will be scored Time Limit Expired (TLE) without a hearing. A boat scored TLE shall be scored points for the finishing place one (1) more than the points scored by the last boat that finished within the Finishing Window. This changes RRS 35, A5.1, A5.2 and A10.

17. HEARING REQUESTS:

- 17.1. Intent to protest shall be signaled in accordance with RRS 60.2. The protesting boat shall also notify the Race Committee at the first reasonable opportunity after finishing and be acknowledged before leaving the finish area. This changes RRS 60.2.
- 17.2. Hearing requests shall be written on forms available at the office of the Houston Yacht Club and delivered there within sixty (60) minutes following the arrival in the harbor of the Race Committee boat for the racing Class or Division ("Protest Time Limit"). This time will be posted on the "HYC Race Information" official notice board. This changes RRS Appendix S13.2.
- 17.3. The times and locations of the protest/request for redress hearings, along with the names of the boats involved, will be posted on the "HYC Race Information" official notice board at the entrance to the breezeway adjacent to the offices of The Houston Yacht Club no later than thirty (30) minutes after the Protest Time Limit.

- 17.4. For the purpose of meeting obligations under US Sailing prescriptions concerning redress, notification of a redress hearing shall be by posting on the "HYC Race Information" official notice board for thirty (30) minutes. The requirement for written requests for attendance of the hearing will be satisfied by a signup sheet at the official protest table located in the lobby of the HYC clubhouse. No more than one person per boat may attend. No request for redress based on a protest committee decision will be accepted later than 30 minutes after a protest committee decision has been posted on the "HYC Race Information" official notice board. This changes RRS 63.1.
- 17.5. As a courtesy, the Protest Committee may attempt to notify the parties to a protest hearing or a redress hearing by telephone at the telephone number provided online on Regatta Network upon registration.

18. SCORING:

- 18.1. The scoring system is in accordance with Appendix A of the RRS.
- 18.2. One (1) race is required to be completed to constitute a regatta.
- 18.3. When five (5) or more races have been completed, a boat's series score is the total of her race scores excluding her worst score. This changes RRS Appendix A.
- 18.4. All PHRF handicap classes will be scored using Time on Distance (TOD) scoring.

19. SAFETY REGULATIONS: [DP] A boat that retires from a race shall notify the race committee on the water, or, if that is not possible, The Houston Yacht Club office by telephone: 281-471-1255, or VHF Channel 68 (all Divisions) at the first reasonable opportunity. Failure to comply with this requirement may result in disqualification from this regatta.

20. DISCLAIMER OF LIABILITY: Competitors participate in this regatta entirely at their own risk. See RRS 3, Decision to Race.

21. RISK STATEMENT:

- 21.1. RRS 3 states: "The responsibility for a boat's decision to participate in a race or to continue racing is hers alone." By participating in this event each competitor agrees and acknowledges that sailing is a potentially dangerous activity with inherent risks that may cause damage and injury or death. These risks include strong winds and rough seas, sudden changes in weather, failure of equipment, boat handling errors, poor seamanship by other boats, loss of balance on an unstable platform and fatigue resulting in increased risk of injury. **Inherent in the sport of sailing is the risk of permanent, catastrophic injury or death by drowning, trauma, hypothermia, or other causes.**
- 21.2. **The organizing authority will not accept any liability for material damage or personal injury, or death sustained in conjunction with or prior to, during, or after this regatta.**

22. FURTHER INFORMATION:

For further information, or to contact club operations, please feel free to contact:

Sara O'Dell, HYC Communications Director, (281) 471-1255

Phillip Meeker, HYC Harbor Manager, (936) 581-4581

Park Tupper, Regatta Chairman, park.tupper@gmail.com

SECTION A- Race Areas



SECTION B

Class Flags & Starting Order for FIRST RACE of Each Day

Division 1 - (Billy Richnow – PRO) VHF channel 68

CLASS

PHRF Spin

J/24

J/22

FLAG

Gray Flag

J/24 Class Flag

J/22Class Flag

Division 2 - (Adolph Mares – PRO) VHF channel 72

CLASS

Melges 15

Ensign

Sunfish

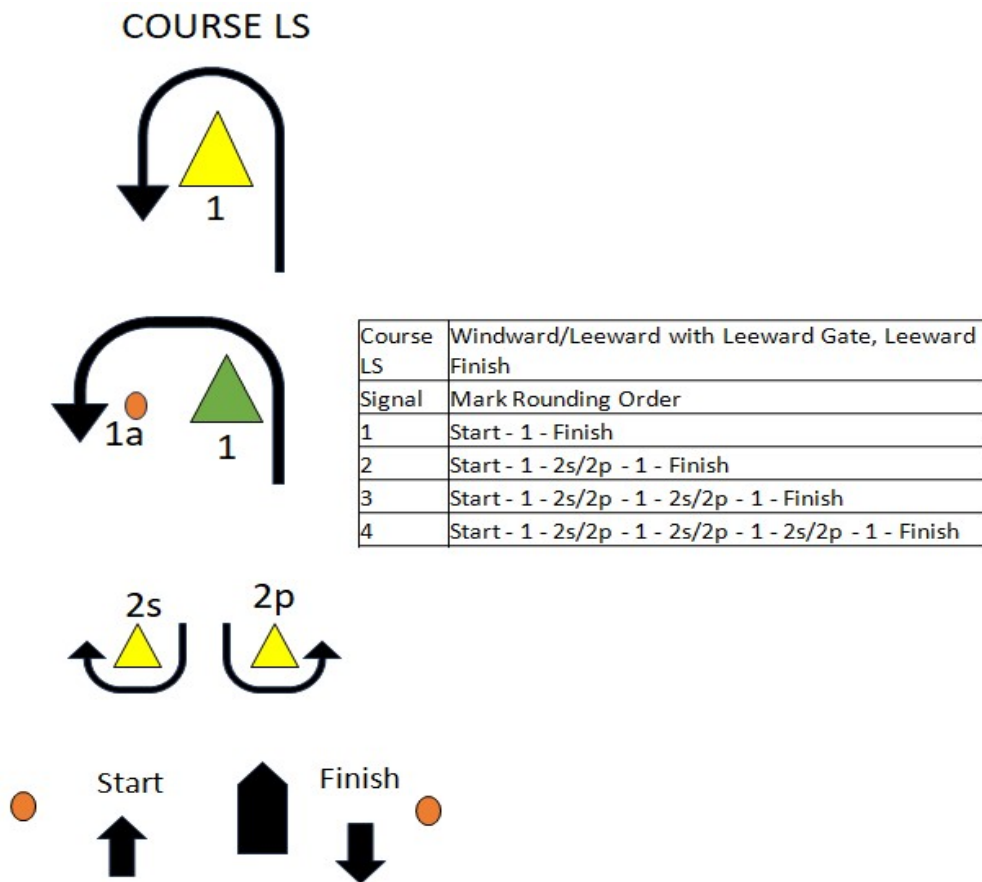
FLAG

Melges 15 Class Flag

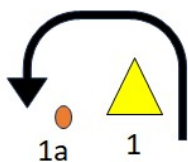
Ensign Class Flag

Purple Flag

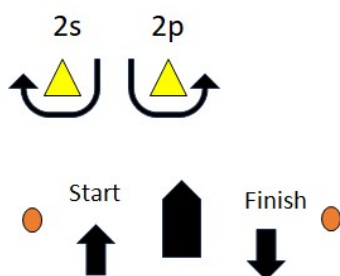
SECTION C - Course Diagrams (See SI 10 for mark descriptions)



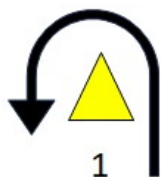
COURSE LA



Course LA	Windward/Leeward with Leeward Gate, Leeward Finish
Signal	Mark Rounding Order
LA1	Start - 1 - Finish
LA2	Start - 1 - 2s/2p - 1 - Finish
LA3	Start - 1 - 2s/2p - 1 - 2s/2p - 1 - Finish
LA4	Start - 1 - 2s/2p - 1 - 2s/2p - 1 - 2s/2p - 1 - Finish



COURSE L



Course L	Windward/Leeward, Leeward Finish
Signal	Mark Rounding Order
L1	Start - 1 - Finish
L2	Start - 1 - 2 - 1 - Finish
L3	Start - 1 - 2 - 1 - 2 - 1 - Finish
L4	Start - 1 - 2 - 1 - 2 - 1 - 2 - 1 - Finish

