



2025 Griffith Series Races, #1 #2 and #3

SAILING INSTRUCTIONS

Saturday, March 29th, Saturday, April 12th, Saturday, May 17th

The Organizing Authority (OA) is Los Angeles Yacht Club®. The club is located at 285 Whaler's Walk, San Pedro, California 90731. The LAYC® telephone number is 310-831-1203, and the web address is www.LAYC.org

1 COVID-19 PANDEMIC

This event is being held in compliance with all the current requirements, policies, restrictions and procedures promulgated by Federal, California State and local government entities that may apply during the Covid-19 Pandemic, furthermore, this guidance shall be carefully followed by LAYC staff, competitors, and race committee.

Registration will only be offered online at www.layc.org.

Results will be posted as soon as possible on www.layc.org.

The person in charge of each boat is responsible for providing LAYC Race Committee with contact information for each crew member to enable individuals to be traced for any reason during or after the event. This list should be emailed to PRO davidcollins@mindspring.com before the start.

1.0 RULES.

- 1.1** The RRS states that the SI need not repeat a rule from the NOR so please **always carry copies of both the NOR and SI on board.**

- 1.2** This series will be governed by the “rules” as defined in The Racing Rules of Sailing (RRS), except as modified by this notice of race and the sailing instructions. Compliance with the US Safety Equipment Regulations (USSER), US Nearshore Race level, as effective January 1, 2025, is recommended.
- 1.3** *When a boat sailing under the rules as defined in The Racing Rules of Sailing meets a vessel that is not, she shall comply with the preamble to Part 2 of RRS which states that the rules of part 2 are replaced by the right-of-way rules of the International Regulations for Preventing Collisions at Sea (IRPCAS) or by government right-of-way rules. [Amalgamated International & U.S. Inland Navigation Rules | Navigation Center \(uscg.gov\)](https://uscg.gov).*
- 1.4** *If a boat does not comply with either the IRPCAS or government right-of-way rules she can be protested.*
- 1.5** RRS 52 is modified to allow the use of winches operated using stored power.
- 1.6** RRS 55 is modified by adding the following sentence to the rule: “However, discarding biodegradable sail stops when setting a sail is permitted.”
- 1.7** All boats are reminded that launching/controlling/flying any unmanned aerial system (UAS or “drone”) over federally controlled areas or in close proximity to commercial vessels is strictly prohibited.

2 SCHEDULE OF RACES.

The Warning Signal for the first start will be at 1255. The start will be a pursuit style inverted start.

3 PURSUIT RACE START.

The Race Committee will assign individual starting times for all yachts.

4 START AND FINISH LINES.

The *start line* will be located inside Los Angeles Harbor east of Pier 400.

The finish line will be located inside the Los Angeles Harbor in the same position as the start.

5 COURSES.

- 5.1 Race Courses.** The 2025 George Griffith Series Course Chart is included here and defines three courses. Courses will be number flags or boards showing 1, 2, or 3.
- 5.2** Course 1. Start east of Pier 400 inside Los Angeles Harbor, round the west end of the middle breakwater (50) to port, re-enter the harbor at Long Beach Light (19), and return to finish at starting location. Distance 6.7 nm.
- 5.3** Course 2. Start east of Pier 400 inside Los Angeles Harbor, round the west end of the middle breakwater (50) to port, re-enter the harbor at Long Beach Light (19), round Island Chaffee to port, and return inside the harbor to finish at starting location. Distance 11.5 nm.
- 5.4** Course 3. Start east of Pier 400 inside Los Angeles Harbor, leave Los Angeles light (58) to starboard, round Point Fermin Buoy (55) to port, round east end of Belmont detached breakwater (10) to port, round Island Chaffee to port, and return inside the harbor to finish at starting location. Distance 17.2 nm.

- 5.5** The PRO may hail the fleet on VHF Channel 71 to announce the course for the day and if necessary to provide revised pursuit start times for the race prior to the attention signal.

6 STARTING

- 6.1** Starting times for race #1 will be staggered according to assigned PHRF handicaps in a pursuit start. A list of starting times will be available no later than 1000 on March 16th, 2024. This may change for the second and third races.
- 6.2** The race will be started using RRS 26 except as modified by these Sailing Instructions.
- 6.3** The starting line will be between a staff displaying an orange flag on the Race Committee boat and a nearby flag mark at the pin.
- 6.4** To alert everyone that the starting sequence is about to commence, multiple sound signals will be made approximately one minute before the warning signal for the first boat.
- 6.5** Attention signal 1254: Warning signal 1255: Preparatory signal 1256: First competitor starts at 1300.
- 6.6** **After the first start a whistle will be sounded at each individual start time but with no flag.** For the purpose of establishing a boat's Preparatory Signal time, it shall be four minutes prior to her individual start time, but with no flag nor sound signal. Boats not racing before their prep signal but shall keep clear of the racing area.
- 6.7** Any boat OCS will be signaled with a horn and on channel 71 and shall round an extension of the starting line to restart. **Code flag X will not be flown.** Failure of equipment, failure to hear a hail, delay in hailing or the order in which hails are given shall not be grounds for redress. This modifies RRS 29.1.

7 FINISHING

- 7.1** The finish line will be located inside the Los Angeles Harbor in the same position as the start.

8 TIME LIMIT AND RETIREMENT.

- 8.1** Boats finishing after 1800 hours shall be scored DNF. This changes RRS 35 and A4.
- 8.2** A boat that retires from a race shall notify the Race Committee by hailing or by VHF 71 before leaving the race area.

9.0 PROTESTS AND REQUEST FOR REDRESS.

- 9.1** A boat intending to protest shall notify the Race Committee and identify the boat being protested promptly after finishing.
- 9.2** Protests shall be written on forms available online at www.ussailing.org or available at the LAYC front desk. They must be filed within 45 minutes after the Race Committee boat has docked. The Protest Time Limit (45 minutes after the signal boat docks) shall be displayed on the Official Noticeboard at the LAYC front desk.
- 9.3** The Protest Committee will hear protests as soon as practical in approximately the order of the receipt.

9.4 It may be necessary to hold protests later or online.

10.0 SCORING.

10.1 The Low Point system of Appendix A will apply. There will be a daily first awarded for each race. Three races are required to be completed to constitute a series. A yacht's series score will be the total of her three race scores. There will be no "throw out" race.

11 TROPHIES.

11.1 Trophies will be presented at the LAYC clubhouse during the After Party following each race.

11.2 Take home trophies for individual races will be awarded for yachts in each class.

11.3 The series winner for each class will be engraved on the **George Griffith Perpetual Trophy**.

11.4 The first female skipper series winner overall will also be awarded the **Dean Harrell Perpetual trophy**.

11.5 Yacht Club Challenge: any yacht club that has at least three boats entered will be eligible to enter in the Yacht Club Challenge. All yachts will be automatically entered when there is the requisite number of boats from a club unless a boat/skipper notifies the Race Committee that they would prefer not to participate in the challenge. There is no limit to the number of boats or clubs that may be represented, however at least two clubs must be entered in the Yacht Club Challenge for a trophy to be awarded. The top three overall pacing yachts from each club will be scored in the challenge. At the conclusion of the two-race series, the yacht club that compiles the best series score will be awarded the Yacht Club Team Challenge trophy.

12 SOCIAL EVENTS AND HOSPITALITY.

For each race there will be an After Party in the clubhouse.

13 BERTHING.

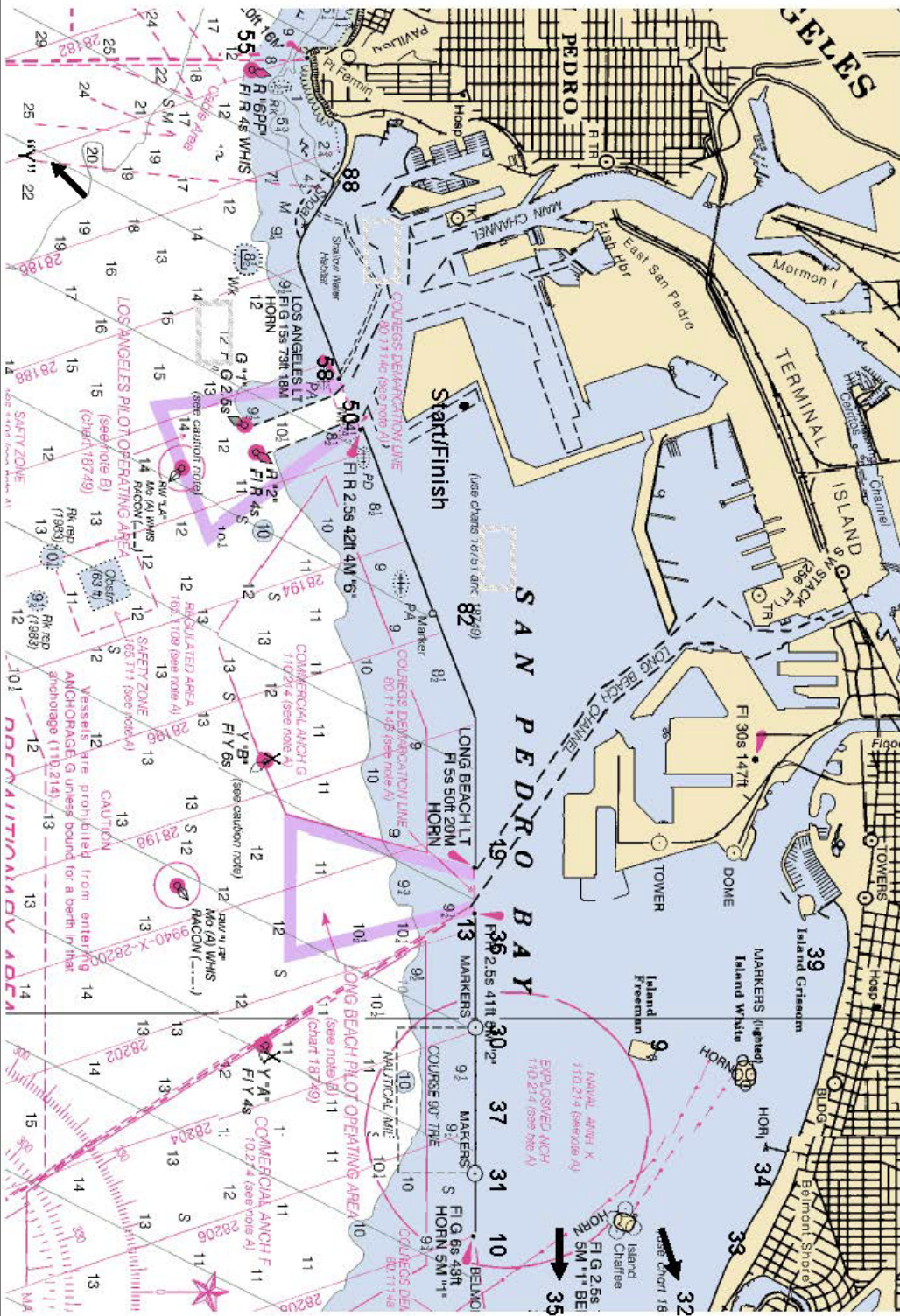
Los Angeles Yacht Club may be able to assist with limited berthing. For further information please contact the yacht club office.

14 DISCLAIMER OF LIABILITY

Sailing is an activity that has an inherent risk of damage and injury. Competitors in this event are participating entirely at their own risk. See RRS 4, Decision to Race. The race organizers (organizing authority, race committee, protest committee, host club, sponsors, or any other organization or official) will not be responsible for damage to any boat or other property or the injury to any competitor, including death, sustained as a result of participation in this event. By participating in this event, each competitor agrees to release the race organizers from any and all liability associated with such competitor's participation in this event to the fullest extent permitted by law.

Event Chair and Principal Race Officer, David Collins, (310) 310-4914, davidcollins@mindspring.com

LOS ANGELES YACHT CLUB revised
RACE COURSE CHART NO. 2024
2025 Griffith Series Event



NOT TO BE USED FOR NAVIGATION

11/12/2024