



## 2025 LOW COUNTRY HOOK OCEAN RACE

26 April 2025

Presented by

**Chatham Sailing Club and  
South Carolina Yacht Club**



Hilton Head Island, SC to Skidaway Island, GA

### SAILING INSTRUCTIONS

Revised 4/17/2025



#### 1. RULES

- 1.1 The race will be governed by the rules as defined in The Racing Rules of Sailing (RRS).

#### 2. ELIGIBILITY AND ENTRY

- 2.1 The race is open to monohull and multihull sailboats with a minimum length of 22 ft. and a maximum of 51 ft. All eligible boats must have a PHRF rating, have auxiliary power, VHF radio and be manned by an eligible captain and crew.
- 2.2 Eligible boats may enter by completing the registration form available at [https://www.regattanetwork.com/clubmgmt/applet\\_registration\\_form.php?regatta\\_id=29489](https://www.regattanetwork.com/clubmgmt/applet_registration_form.php?regatta_id=29489) together with the required fee before the start of the race.
- 2.3 There will be separate classes for J-24, Spinnaker, Non-Spinnaker, and Cruising boats. The Race Committee may assign or reassign boats to classes based on PHRF ratings and on number of boats registered in a particular class.

#### 3. NOTICES TO COMPETITORS

Notice to competitors will be announced at the Competitors' meeting and over the VHF hailing channel in advance of the start of the race. The VHF hailing channel will be 71. Notices may also be emailed to registrants.

#### 4. CHANGES TO SAILING INSTRUCTIONS

- 4.1 Changes to the sailing instructions will be announced at the Competitors' meeting and announced over the VHF hailing channel prior to the first warning signal.
- 4.2 Any schedule change will be emailed to registrants by 8:00 pm on the day before the race.

#### 5. CHANGES MADE ON THE WATER

Oral changes may be made on the water by hailing over the VHF hailing channel 71 prior to the start of the race.

#### 6. SCHEDULE

- 6.1 Skippers meeting Friday, 25 August 6:00 pm on the deck of the Yacht Club of Hilton Head Island (YCHHI) at Palmetto Bay Marina. Drinks to follow at the Black Marlin Restaurant at Palmetto Bay.
- 6.2 Saturday, 26 August at 9:55 am, Warning Signal for the first class will be given. Consideration of late arrivals due to wind and tide may alter the time of a class warning signal. Any changes will be announced over the VHF hailing channel.
- 6.3 Race Committee may announce the intended Order of Starts at the Competitors' meeting. The actual Order of Starts may be announced over VHF hailing channel prior to the warning signal.

## **7. RACING AREA**

The racing area will be the Calibogue Sound, Atlantic Ocean, Wassaw Sound and the Wilmington River.

## **8. THE COURSE**

- Start – Near G7 Calibogue Sound (honor Calibogue Sound Channel Markers after start)
- Mark – R2 to Port Calibogue Sound
- Mark – G5 to Starboard Tybee Roads (Tybee Roads Channel Markers do not need to be honored to avoid shipping traffic)
- Mark – R2W to Starboard Wassaw Sound (honor Ocean, Wassaw Sound & Wilmington River Channel Markers)
- Finish – North end of Landings Harbor Pier & Race Committee Boat

## **9. THE START**

- 9.1 The race committee may announce upcoming signals over VHF hailing channel 71.
- 9.2 Before the warning signal, boats intending to race shall check-in by sailing past the stern of the signal boat on starboard tack hailing their sail number or boat name if no sail number. Race Committee may accept check-ins over the VHF hailing channel 71
- 9.3 The starting line will be between a staff displaying an orange flag on the signal boat and an inflatable buoy located near G7 at the entrance to Calibogue Sound.
- 9.4 Any boat starting later than 10 minutes after its starting signal shall notify Race Committee of their intention to race using the VHF hailing channel. The boat must pass Marker G7.
- 9.5 Class Flags J-24 and Spinnaker – Yellow; Non-Spinnaker and Cruising – Green; Additional or alternative Class flags may be assigned at the Competitors' Meeting and announced as a change to the SI.

## **10. THE FINISH**

- 10.1 The finish line will be line between a staff displaying a Blue flag on the Landings Harbor Pier, and the Race Committee Boat or an inflatable buoy directly across the river. In the absence of a buoy, the finish line will be perpendicular to the Landings Harbor Pier (approximate compass bearing 66 degrees.)
- 10.2 All boats shall record their times at R2W and text them to the Finish Judge Lilli Hutto 563-505-6521 Mark your time when R2W is abeam as you round up to a heading of 315 degrees. (see figure below)
- 10.3 In the event that Race Committee shortens course, the finish line will be at R2W in accordance to RRS 34 US Sailing Prescription. Shortened Course shall be announced over the VHF hailing channel. If the course is shortened, each boat shall record and text their shorten course finish time to the Race Officer Finish Line Judge: Lilli Hutto 563-505-6521 This changes RRS 32.1.
- 10.4 The time limit to finish will be 6:00 pm. Boats not finished by the time limit shall be scored based on their position on the water.
- 10.5 Race Committee may offer boats their finish position on the water prior to the time in 10.4.
- 10.6 Boats that retire or otherwise change their racing status should inform the Finish Judge by text. VHF may not be reliable from offshore and we will have no judge in the Wassaw Sound, only at the finish line.

## **12. RETIREMENT**

A boat which retires from the race shall notify the signal boat over the VHF hailing channel as soon as reasonably possible, or call/text the RO.

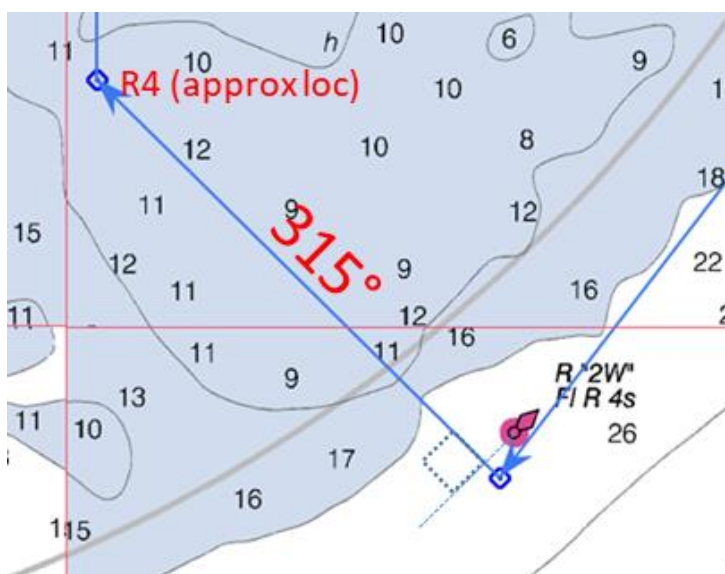
## **13. PROTESTS**

- 13.1 A boat intending to file a hearing request shall inform Race Committee via the VHF hailing channel at the first reasonable opportunity after racing. This adds to RRS 61.1a.
- 13.2 Hearing Requests shall be emailed to the Race Official, Lilli Hutto, [lilli.hutto@gmail.com](mailto:lilli.hutto@gmail.com), within 45 minutes of the last boat to finish in their class, or delivered in person to the RO. Use of the US Sailing Hearing Request form is encouraged.

13.3 Hearings shall be heard as soon as practicable in the approximate order received. In-person hearings will be at an open area at Chatham Sailing Club. Virtual Protests may also be used.

#### 14. SCORING AND PRIZES

- 14.1 Hook Ocean Race will use Time on Time handicapping. Each boat's elapsed time will be multiplied by a correction factor to determine their corrected time. The correction factor will be  $650/(550+\text{PHRF handicap})$ .
- 14.2 Race results will be posted on Regatta Network.
- 14.3 Trophies will be awarded to the top three finisher of each class. The Todd Williams Trophy will also be presented to the best in class determined by the race committee. Trophies will be available at the closing ceremony or shipped to winners not present.



#### 15. SAFETY

- 15.1 All boats shall monitor the VHF hailing channel.
- 15.2 All boats shall be sailed by at least 2 persons. The maximum number of crew is N people, where N is:  $(\text{LOA} \times .3) - 2$ , with all fractions rounded up.
- 15.3 The US Sailing Safety Equipment Requirements for category Nearshore are recommended.
- 15.4 Please notify Race Committee over the VHF hailing channel when you enter the Wilmington River.

#### 16. Risk Statement & DISCLAIMER OF LIABILITY

- 16.1 Rule RRS 3 states: 'The responsibility for a boat's decision to participate in a race or to continue to race is hers alone.' By participating in this event each competitor agrees and acknowledges that sailing is a potentially dangerous activity with inherent risks. These risks include strong winds and rough seas, sudden changes in weather, failure of equipment, boat handling errors, poor seamanship by other boats, loss of balance on an unstable platform and fatigue resulting in increased risk of injury. Inherent in the sport of sailing is the risk of permanent, catastrophic injury or death by drowning, trauma, hypothermia or other causes.
- 16.2 Competitors participate in the race entirely at their own risk. The organizing authority will not accept any liability for material damage or personal injury or death sustained in conjunction with or prior to, during, or after the race.

#### 17. INSURANCE

Each participating boat shall be insured with valid third-party liability insurance sufficient to cover liability for loss, damage, injury or death.

## Route Properties



## Properties

## Name

Hook Race

## Depart From

Landing Harbor Marina

## Destination

Calibogue Snd G-7

## Total distance

28.11 NMi

## Plan speed

5.00

## Time enroute

05 Hours 37 Minutes

## Departure

## Time shown as



UTC



Local @ PC



LMT @ Location

## Color:

Default color

## Style:

De

## Waypoints

L..	To Waypoint	Distance	Bearing	Latitude	Longitude
---	Calibogue Snd G7 - Start	108.75 NMi	226 Deg. T	32 06.5 N	080 50.2 W
1	Calibogue Snd G5	1.54 NMi	165 Deg. T	32 05.0 N	080 49.7 W
2	Calibogue Snd R2	1.21 NMi	183 Deg. T	32 03.8 N	080 49.8 W
3	Tybee Roads - R14	1.98 NMi	166 Deg. T	32 01.9 N	080 49.2 W
4	Tybee Roads - R6	2.85 NMi	140 Deg. T	31 59.7 N	080 47.1 W
5	Tybee Roads - G5	1.02 NMi	121 Deg. T	31 59.2 N	080 46.1 W
6	Wassaw Snd - R2W	9.76 NMi	218 Deg. T	31 51.5 N	080 53.0 W
7	Wassaw Snd - R4 (if it exists)	1.06 NMi	315 Deg. T	31 52.2 N	080 53.9 W
8	Wassaw Snd - G9	1.71 NMi	000 Deg. T	31 53.9 N	080 53.9 W
9	Wassaw Snd - G13	1.61 NMi	305 Deg. T	31 54.9 N	080 55.5 W
10	Wilmington Rv - G17	1.78 NMi	280 Deg. T	31 55.2 N	080 57.5 W
11	Wilmington Rv - R20	1.16 NMi	325 Deg. T	31 56.1 N	080 58.3 W
12	Landsing Harbor - Finish	2.43 NMi	306 Deg. T	31 57.5 N	081 00.6 W

Print Route

Extend Route

Split Route

Cancel

OK

