



Waikiki Yacht Club
1599 Ala Moana Blvd
Honolulu, Hawaii, 96814
808.995.4405 | regatta@waikikiyachtclub.com

Sailing Instructions

D.J.JOHNSON AROUND OAHU REGATTA

May 24th, 25th, and 26th, 2025

1. RULES:

- 1.1. The regatta will be governed by the rules as defined in the Racing Rules of Sailing (RRS), the prescriptions of US SAILING, pertinent Class/Fleet Rules, by the Waikiki Yacht Club and Hawaii Yacht Racing Association Standing Sailing Instructions, the Notice of Race and these Sailing Instructions.
- 1.2. The RRS are changed as follows:
 - 1.2.1. Rule 52 is changed to allow the use of powered winches for double-handed racers, single handed racers, and cruising class only
 - 1.2.2. Rule 52 is modified to allow the use of autopilot for doubled-handed racers, and single-handed racers only
 - 1.2.3. Rule 63.1 prescriptions are not in effect

2. **NOTICES TO COMPETITORS:** Notices to competitors will be posted on the official notice board located in the WYC on the regatta board for the first day, on the KYC bulletin board for the second day and available from the Race Committee boat for the third day.

3. **CHANGES TO THE SAILING INSTRUCTIONS:** Any change to the sailing instructions will be posted before 0900 on the day it will take effect. Except on the third day, they will be passed out from the race committee boat.

4. **SIGNALS MADE ASHORE:** Signals made ashore will be displayed from the WYC flagpole for day one, the KYC flagpole for day two and all signals will be made from the race committee boat on day three.

5. SCHEDULE OF RACING:

- 5.1. See appendices A, B and C
- 5.2. If less than three vessels are registered for a fleet, their start will be combined with the next fleet to start at the starting time for the earlier start and use the subsequent fleet's starting flag (e.g. If B fleet has 2 vessels, A fleet and B fleet will start at the earlier time and X fleet will move their start time earlier accordingly. B and A fleet will use A fleet's starting flag)
- 5.3. If any fleets are combined and start is moved forward, Race Committee will announce on channel 68

6. PROTESTS AND REQUESTS FOR REDRESS

- 6.1 Protest forms are available at WYC. Protests and requests for redress or reopening shall be delivered there or via email to rc-sail@waikikiyachtclub.com within two hours of last boat's completion.
- 6.2 Protests will be heard in approximately the order received as soon as possible.
- 6.3 Protests on incidents occurring on Day 2 will be heard immediately after the Day 3 race.

- 6.4 Protest notices will be posted within 30 minutes of the protest time limit to inform competitors where and when there is a hearing in which they are parties or are named as witnesses.

7. REQUIREMENTS FROM DNLR:

7.1 Our permit does not authorize the use of any beach parks or facilities, please contact city parks at 768-3440 or appropriate agencies.

7.2 All boats shall follow all navigational rules at all times while in the ocean waters.

7.3 Each boat operator shall have passed the boater safety education class and have their boater safety education card on them during the use of the motorized vessels.

7.4 Participants shall take all precautions during the event and be aware that there are multiple events occurring on the same days throughout Oahu ocean waters.

8. FURTHER INFORMATION;

James Ramsey (808)-351-6918 or rc-sail@waikikiyachtclub.com

APPENDIX A
May 24, 2025
Day 1

Racing Area: The racing area will be off the leeward and windward shores of Oahu

The Course: The course will be Start – DH to port – Finish. Boats shall pass all islands to port (seaward) except for Moku Manu, which may be passed to port. Course distance is approximately 27 NM.

Signals: Class Flags as described below will be displayed for each classes Warning Signal.

PH B	Cal20
<i>IF PH A & B Combined</i>	<i>Black with #1</i>
PH A	Black with #1
PH X	Pink with Black X
Multihulls	Blue with M

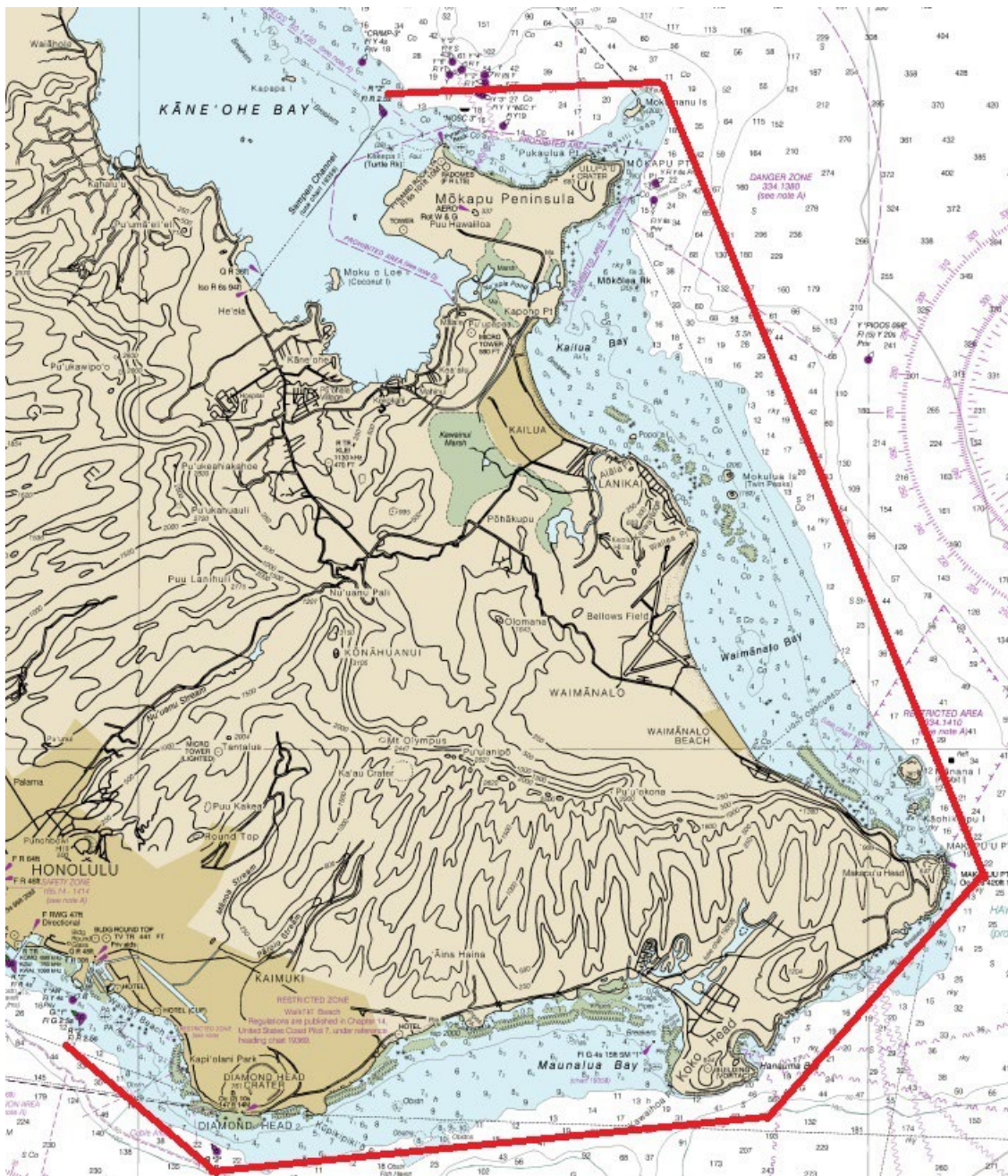
The Start: The start will be located approx. ¼ mile southeast of the Ala Wai Harbor Entrance. The Starting Line will be between two yellow or orange inflatable buoys. A boat shall not start later than 10 minutes after her starting signal.

<u>Class</u>	<u>Warning</u>	<u>Start</u>
PH B	0955	1000
<i>IF PH A & B combined</i>	<i>0955</i>	<i>1000</i>
PH A	1005	1010
PH X	1015	1020
Multihulls	1025	1030

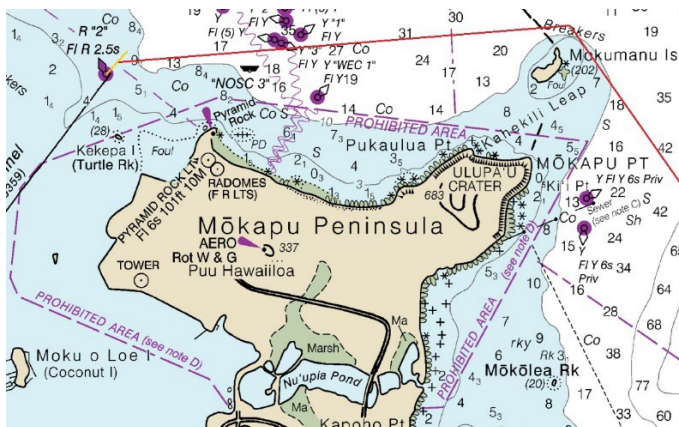
The Finish: The finish is at Kaneohe Bay Sampan channel entrance. The finish line is the Sampan Channel entrance buoy R2 passing within 50 yards to starboard of R2 and at a bearing to land of 207 degrees magnetic. If Race Committee Boat is on station in the Sampan Channel, boats may communicate on **VHF Channel 68** to verify their finish times. If Race Committee Boat is not on station boats shall finish and report their finish times (name of boat, HST time of day of finish in HH:MM:SS) to the Race Committee via text to James Ramey at (808)-351-6918 within one hour of finishing.

Safety: Any boat that starts but returns to Waikiki rather than finishing at KYC should contact Race Committee by VHF Channel 68 or by phone at (808)-351-6918.

Entering Kaneohe Bay and Mooring: Boats with a draft over 7 ft. should use the Main Ship Channel to enter Kaneohe Bay. Contact KYC port captain regarding mooring at Kaneohe Yacht Club at least one week prior.



Day One – Course



Day One – Finish (finish line drawn in yellow)

APPENDIX B
May 25, 2025
Day 2

Racing Area: The racing area will be off the windward and north shores of Oahu.

The Course: The course will be: Start – Finish at entrance to Haleiwa Harbor – Approx. 33 NM.

Signals: Class Flags as described below will be displayed for each class's Warning Signal.

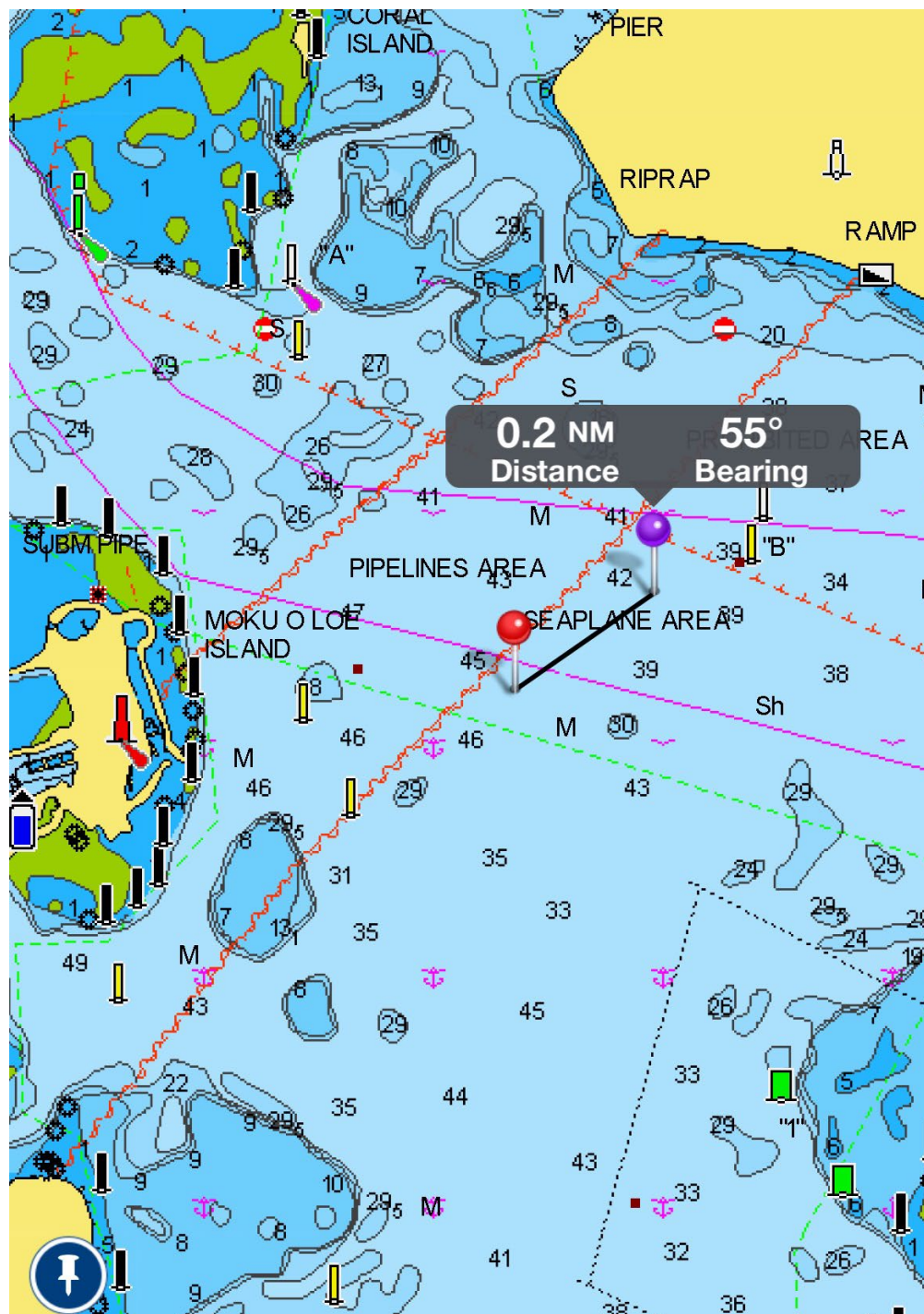
PH B	Cal20
<i>IF PH A & B</i>	<i>Black</i>
PH A	Black
PH X	Red
Multihulls	Blue

The Start: The starting line will be in Kaneohe Bay near “B” buoy and Coconut Island. An example of the approximate location of the start line is provided in the graphic below. Please note that the representative line in the graphic is an approximate and does not provide the exact location or bearing. The start line will be between an orange pin and the staff of an orange flag on the Race Committee Boat. No boat shall not start later than 10 minutes after her starting signal.

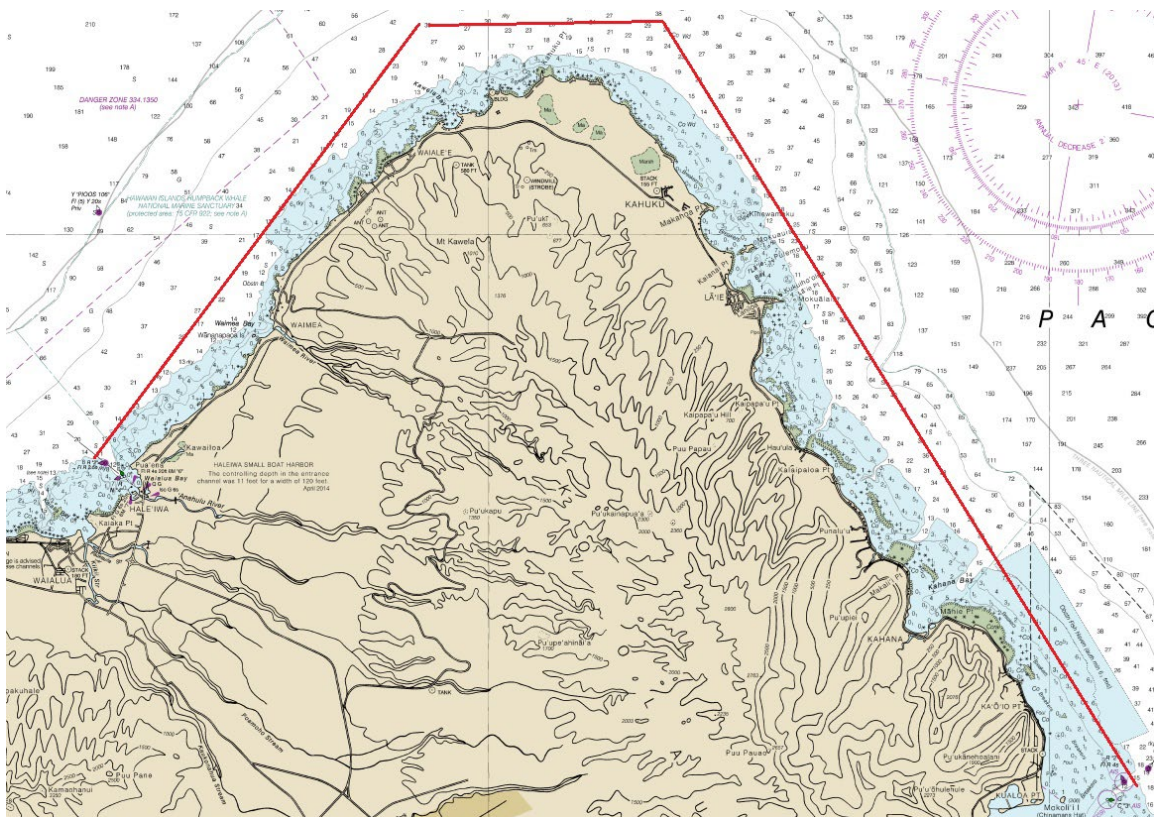
<u>Class</u>	<u>Warning</u>	<u>Start</u>
PH B	0855	9000
<i>IF PH A & B combined</i>	<i>0855</i>	<i>9000</i>
PH A	0905	0910
PH X	0915	0920
Multihulls	0925	0930

The Finish: The finish line is Haleiwa Harbor buoy R2 passing within 50 yards to starboard of R2 and at a bearing to land of 135 degrees magnetic. If Race Committee member is on station at Haleiwa Alii Beach Park, boats may communicate on **VHF Channel 68** to verify their finish times. If Race Committee member is not on station boats shall finish and report their finish times (name of boat, HST time of day of finish in HH:MM:SS) to the Race Committee via text to James Ramsey at (808)-351-6918 AND Ian Scott at (808) 542-1710 at and Kerri Scott at (808) 383 6549 within one hour of finishing.

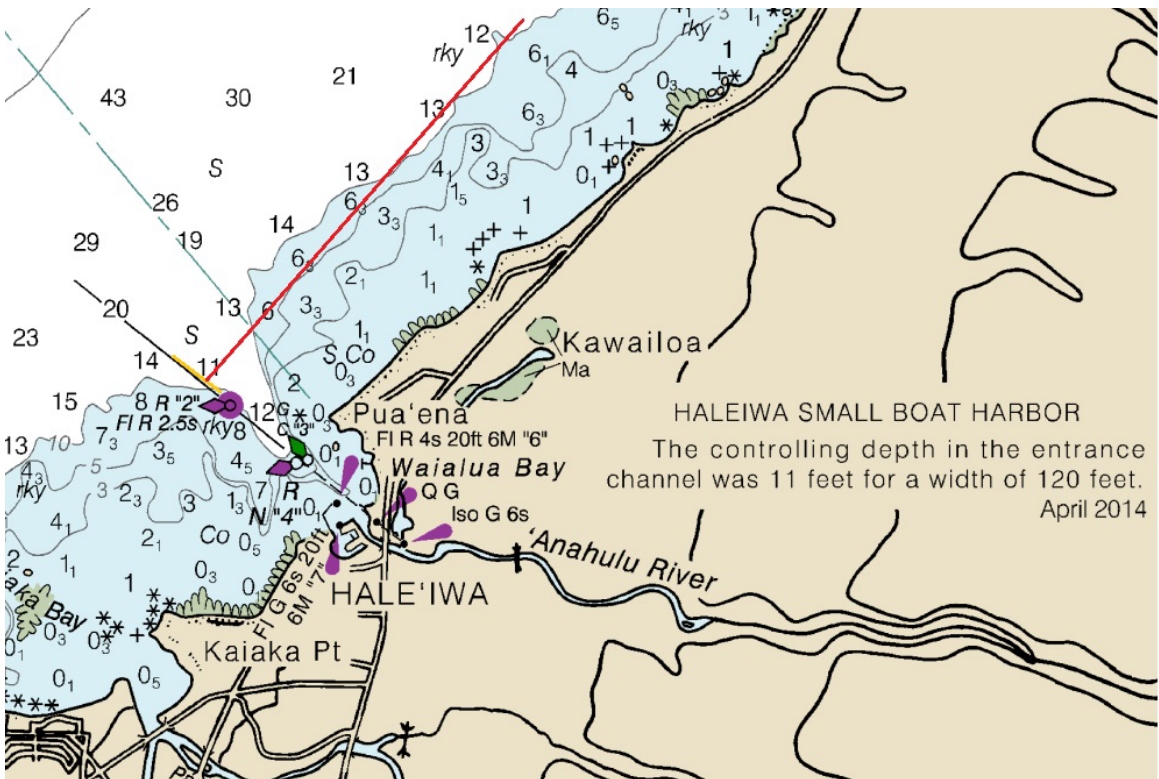
MOORING: It is each entrant's responsibility to secure mooring for the second day. Mooring applications can be filed at any of the state harbors. Required documents include but are not limited to: vessel registration, vessel proof of insurance and photo identification.



Day Two – Start



Day Two – Course



Day 2 Finish – Finish line is drawn in yellow

APPENDIX C
May 26, 2025
Day 3

Racing Area: The racing area will be off the leeward shore of Oahu.

The Course: The course will be Start - BP buoys 1 & 2 to port – Pearl Harbor buoys 1 & 2 to port – HH to port – Finish at Ala Wai Channel entrance. Approx. 19 NM

Areas That Are Obstructions: Note the Prohibited area which must be avoided but can be passed to PORT or STBD. Passing inside is at the discretion of the respective skipper.

Signals: Class Flags as described below will be displayed for each class's warning signal.

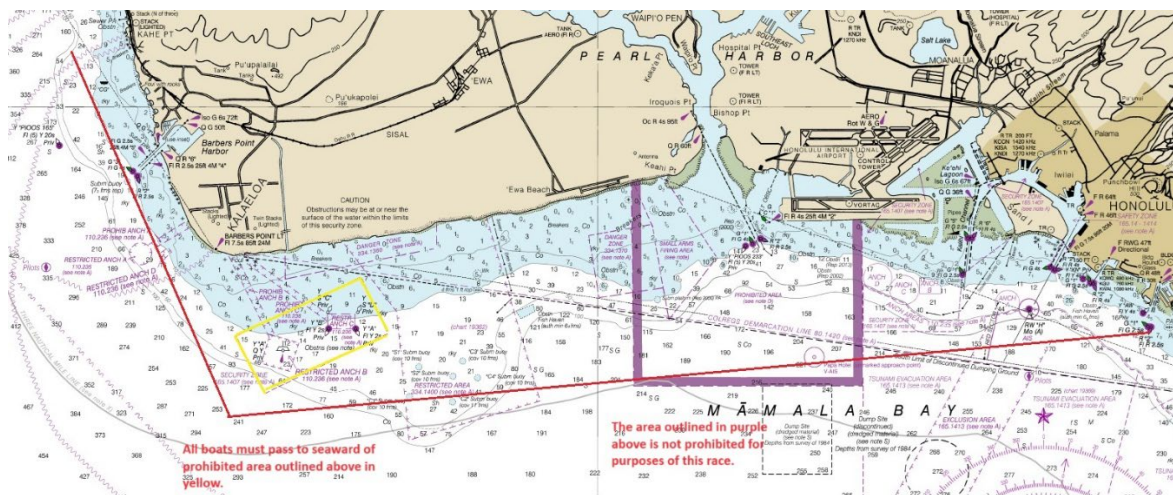
PH B	Cal20
<i>IF PH A & B Combined</i>	<i>Black with #1</i>
PH A	Black with #1
PH X	Pink with Black X
Multihulls	Blue with M

The Start: The Starting Line will be between a yellow inflatable buoy and the staff of an orange flag on the Race Committee Boat. It will be located to seaward of Kahe Power Plant. A boat shall not start later than 10 minutes after her starting signal.

<u>Class</u>	<u>Warning</u>	<u>Start</u>
PH B	0955	1000
<i>IF PH A & B combined</i>	<i>0955</i>	<i>1000</i>
PH A	1005	1010
PH X	1015	1020
Multihulls	1025	1030

The finish: Boats shall communicate with Scott Allen via text (808-312-2249) when passing Honolulu Harbor to notify they are on final approach. The finish is R2 buoy Ala Wai entrance buoy R2 passing 50 yards to starboard of R2. If Race Committee Boat is on station in the Ala Wai Channel, boats may communicate on **VHF Channel 68** to verify their finish times. If Race Committee Boat is not on station boats shall finish and report their finish times (name of boat, HST time of day of finish in HH:MM:SS) to the Race Committee via text to James Ramsey at (808)-351-6918 within one hour of finishing.

Prizes: Prizes will be awarded at approximately 1600 at WYC.



Day 3 - Course