

St. Joseph River Yacht Club
Sail Race Program 2025
Notice of Race and Sailing Instructions

1. Participation Requirements

1.1. Membership

- Must be an SJRYC member in good standing or a non-member who is maintaining a position on the SJRYC membership wait list.

1.2. Registration

- Complete the RegattaNet registration and pay the \$155.00 annual fee via this URL:
https://www.regattanetwork.com/clubmgmt/applet_club_events.php?CLUB_ID=158

1.3. Application/waiver

- Email the completed SJRYC Sail Race Fleet Application and signed Waiver of Liability form to the Fleet Captain at sailracesj@gmail.com.

1.4. Rating certificate

- Email a copy of your boat's 2025 MW-PHRF rating certificate to the Fleet Captain at sailracesj@gmail.com.
- If you do not have a current certificate, a local handicap with a 10% penalty above the fastest rated sistership in the PHRF database will be assigned. Local handicaps are final and cannot be appealed.
- If you start with a local handicap and later get an official MW-PHRF rating certificate, rating changes will not be retroactively applied.

2. Rules

2.1. Racing rules

- The events are governed by the Racing Rules of Sailing (RRS) 2025-2028 and the MW-PHRF regulations. Exceptions to these rules are specifically identified in this document below.

2.3. Safety equipment

- All USCG required and state law required safety equipment must be on board.
- Each boat shall have a VHF marine radio capable of being heard over the normal sounds of the boat when underway.
- Failure to comply with either requirement will result in disqualification (DSQ) without a hearing.

2.4. SJRYC lifejacket rules

- Lifejackets must be worn at the start and finish of every race by each person on board.
- If code flag "Y" is signaled on the race committee (RC) boat, lifejackets must be worn, while on deck, for the entire period of the race. This requirement will also be announced on VHF channel 69 prior to start of the race.



Code flag "Y"

2.5. Boats not racing not allowed to interfere

- All racers are required to stay clear of the starting area and away from competitors before and during a race unless they are properly registered to race in that section.
- Failure to observe this rule will be considered “poor sportsmanship” as defined by RRS rule 2 and rule 69, and will be subject to protest.

2.6. Obstructions

- The start/finish line is closed. Unless she is starting or finishing, a boat shall not cross a line between the anchored race committee boat and a nearby anchored start/finish mark. Such a line is designated as an obstruction.
- A boat's motor can be used prior to the start or during the race to clear the boat from an obstruction, such as an anchor line, if no advantage is gained by the action.

2.7. Clearing a penalty

- Breaking RRS rule 31 (touching a mark of the course) can be exonerated by promptly completing a one-turn penalty.
- Breaking another rule of RRS can be exonerated by promptly completing a two-turns penalty. However, if damage or injury occurs, the penalty is to retire and immediately advise the RC.

2.8. Protests

- To protest a rules infraction, protesting skipper must hail "Protest" to the other boat and fly code flag "B" at the first reasonable opportunity.
- Protestor must notify the RC upon finishing or retiring from the race of the nature of the protest and the name of the protested boat.
- Protestor must submit to the protest committee a written protest within 2 hours of the finish of the race. Protest forms are available at the US Sailing website.
- Protest committee chairperson will coordinate all protest hearings. pfalk@falkspina.com



3. Communication

3.1. Radio procedure

- All boats should monitor VHF channel 69 beginning on arrival to the slip.
- Courtesy radio calls are usually made before and during the race.

3.2. Changes to sailing instructions

- Changes to a sailing instruction may be made on the water by the RC over VHF channel 69.

3.3. Signal flags

- Signal flags are the official communication method on the race course.

4. Fleet Sections

4.1. Section assignment

- Fleet splits within sections will be determined after all boats have registered.
- No boat can race in more than one section within a series - spring or summer.
- Prior spinnaker section boats may race in the Jib and Main (JaM) section for either the spring or summer series, but not both.
- Boats older than 1986 and not custom or production race boats may race in JaM for both series.
- A section will require at least two boats to start the race for that section's race to be scored.

4.2. Equipment

- Boats in spinnaker sections are allowed to use spinnakers, but JaM section boats are not.
- Boats in JaM section may use whisker poles, which must be attached to the mast and be within the "J" measurement.

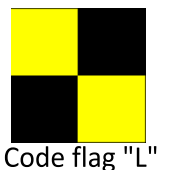
5. Race Procedure

5.1. Timing

- Prior to Labor Day, participating boats should be in the race area by 6:30pm. First warning signal will be at 6:50pm. First start will be at 6:55pm.
- After Labor Day, boats should be in the race area by 6:15pm. First warning signal will be at 6:40pm. First start will be at 6:45pm.

5.2. Check-in

- All boats must pass by the stern of the RC boat to check in prior to the first warning signal, as signaled by code flag "L" - "come within hail".
- Courses will be announced after boat check-in is complete.



Code flag "L"

5.3. Starting sequence (RRS rule 26)

5-minute warning: section flag up + horn.

4-minute: Preparatory flag up + horn.

1-minute: Preparatory flag down + horn.

0-minute - Start: section flag down + horn. If another start follows, next section flag up.



Preparatory flag

Section flags:



Spinn 1



Spinn 2



JaM

5.4. Restarts

- A general recall is signaled by the "First Substitute" flag.
- After a section general recall, that section will restart the sequence after all other sections. This changes RRS rule 29.2.



"First Substitute"

5.5. Missing mark

- The first boat which arrives at the GPS coordinates for a mark has the obligation to complete a reasonable visual search and round the mark, if visible.
- If not visible, this boat is required to complete a "virtual rounding" using the established GPS coordinates for the missing mark and to broadcast her virtual rounding on VHF channel 69 either prior to or directly after rounding the mark.
- Each subsequent boat in the race is required to broadcast her rounding so other boats will be aware that a virtual rounding is required.
- A boat may not request redress if she decides to locate the mark once a virtual rounding has been declared. This amends RRS rule 34 for all SJRYC races.

6. Finishing

6.1. RC boat on station

- For a normal race, finish times are recorded by the RC.

6.2. RC boat not on station at finish

- If the RC boat started the race, but is not on station at the finish, boats shall finish at a diagonal line between the north and south pier heads and note their GPS finish time.
- Each boat shall report her finish time on VHF channel 69.
- Each boat shall email her finish time to sailracesj@gmail.com, along with names of the boat ahead and astern, if possible, within one hour after the finish.

6.3. Race time limits

- Time limit to complete a race for any section is 2 hours from the first warning signal of the evening for the first section.
- If a section's boat finishes within the time limit, an extension of 1 hour is added to that boat's time for all other boats in that section.
- If no boat in a section finishes within the initial 2-hour time limit, no points are given for that section's race.
- Example: If the first Spinn section has a warning at 6:50pm, the cut-off time for that race will be 8:50pm for all sections. If a section's boat finishes prior to 8:50pm, the race will be extended for 1 hour beyond that boat's finish time for that section.
- Cook Plant buoy race and Night nav race to South Haven have separate time limits.

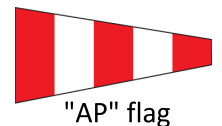
7. Weather Related Delays, Starting Changes, and Cancellations

7.1. Considerations and responsibility

- RC boat crew will determine if it is safe for them to take the RC boat out on the lake.
- Alternatively, the RC boat crew will determine if it is safe for them to hold a race by standing in an appropriate position on the north pier head.
- RC boat crew's actions for themselves should not be taken as an endorsement of safety for other boats in any circumstance, and do not replace the responsibility of each skipper to decide whether to participate, as noted in RRS rules 3 and 4.

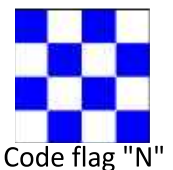
7.2. Signals made ashore

- The RC team may postpone the race and display the "AP" flag on shore. Competitors should monitor VHF channel 69 for instructions.
- The RC team may abandon the race and display signal flags "N" over "A" on shore.



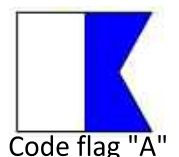
7.3. Postponement on the water

- If winds are not strong enough to start a fair race, the RC may elect to postpone the race and display the "AP" flag on the RC boat.
- 15-minute postponements are held at the discretion of the RC team.
- Competitors should monitor VHF channel 69 for instructions.



7.4. Abandonment on the water

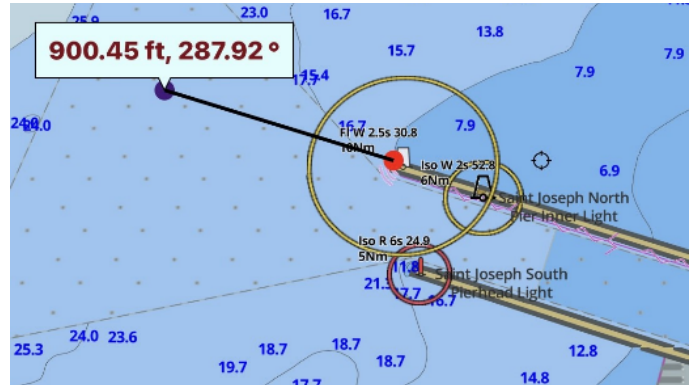
- If there is no improvement in wind conditions after sufficient postponement as judged by the RC team, the race may be abandoned.



- The RC may elect to abandon the race at any time before or during a race by signaling flags "N" over "A" on the RC boat.
- The decision is broadcast on VHF channel 69.

7.5. North pier head start protocol

- If the RC boat opts not to be on the lake, sailors may request a north pier head start. Two boats are required to hold a section race.
- RC member(s) position on the north pier at their discretion.
- Competitors check in by VHF channel 69 and receive course description.
- Standard 5-minute starting sequence proceeds by radio calls.
- Starting line is an imaginary line extending **300 yards** into the lake, parallel to the St. Joseph north pier (288 degrees).
- **42°7.026'N 86°29.870'W**
- Finish by crossing the same line.
- RC crew records the finish times.



Start/finish line off St. Joseph River north pier head

8. Race Scoring

8.1. DNS, DNF, DSQ

- Did Not Start (DNS) means a boat checks in with the RC but is unable to start the race due to an accident, equipment failure, or similar event.
- A boat that checks in, starts the race, and then retires at any time from the race must notify and be acknowledged by the RC prior to leaving the race area. She will be scored Did Not Finish (DNF).
- A boat that is scored DNS, DNF, or is Disqualified (DSQ) earns points for that race equal to the number of boats in her section which started that race +1.

8.2. DNC

- Did Not Compete (DNC) means that a boat is not in the starting area and does not check in, or fails to properly notify the RC boat of withdrawal from a race.
- A boat that is scored DNC is awarded points for that race equal to the number of boats registered in her section +1.

8.3. Make-up races

- Cancelled or abandoned races will not be made up.

8.4. Special time allowance

- The RC, after appropriate calculations, can award time to any boat which renders assistance to another boat in distress.

9. Results Scoring

9.1. Series scoring

- Scored under the Time-on-Time system as used by MW-PHRF.
- Boats in each section will have two throw-out races per series removed from the points total.
- Low points total wins, with points awarded in the order of finish.

- In case of a tie, first count which boat won the most 1st places; if not broken that way, then 2nd places, and so on. If a tie persists, then whichever boat finished highest in the final race of the series breaks the tie. Throw outs will not be counted when breaking a tie.
- 1st, 2nd, and 3rd place flags are awarded in each section for each series.

9.2. Boat of the Year scoring

- Boat of the Year (BotY) will be awarded to each section with an average of 3 or more boats at the starting line throughout the season.
- Low point total wins, with points awarded in the order of finish.
- In case of a tie, first count which boat won the most 1st places over the entire season; if still a tie, then 2nd places, and so on. Throw-outs will initially not be counted.
- If a tie still exists, then the entire race record for the year will be tallied (including throw-outs).
- If tie is still not resolved, whichever boat placed highest in the final race of the year breaks the tie.

9.3. SJRYC offshore series scoring

- The best 3 finishes are counted in a series of races outside of the regular SJRYC series races. Flags will be awarded for 1st, 2nd, and 3rd places.
- Both Spinn and JaM boats are invited.
- The qualifying offshore races are:
 - o South Haven Invitational Regatta
 - o Rhumblin Regatta
 - o Queen's Cup
 - o CYC Race to Mackinac
 - o Tri-State Leg 1 - Chicago to St. Joseph
 - o Tri-State Leg 2 - St. Joseph to Michigan City

10. Requirements for Special Races

10.1. Staggered start races

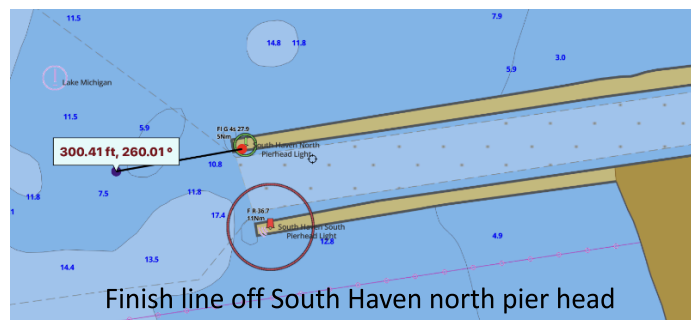
- Skippers may use engines for propulsion up to their start time for this race, but not beyond.
- JaM boats use their jib and main ratings and Spinn boats use their spinnaker ratings.
- Start times for each boat will be emailed prior to race.
- No pre-race meeting is held.

10.2. Chili Regatta & Dual-handed race

- Boats may elect to sail with a JaM or spinnaker rating.
- No spinnakers may be used by JaM boats.
- No pre-race meeting is held.

10.3. South Haven night navigation race

- All boats will start at the usual time.
- Finish is an imaginary line extending 300 feet into the lake, parallel to the South Haven north pier (260 degrees).
- **42°24.105'N 86°17.364'W**
- Each boat shall broadcast on VHF channel 69 when 1/2 mile from the finish line. Each boat shall radio with their GPS finish time just after crossing the finish line.



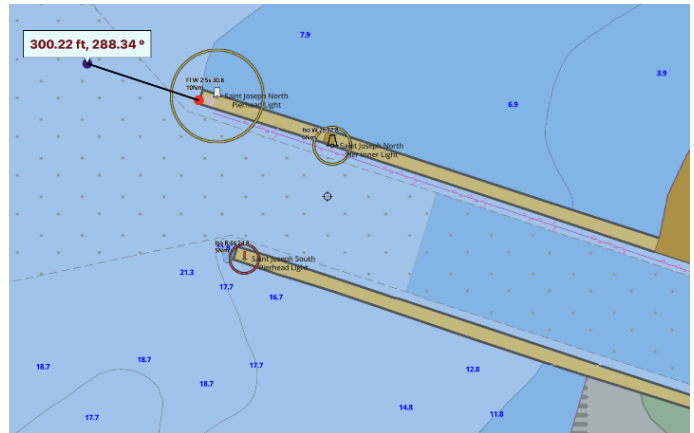
- Each boat shall email her finish time, including the names of the boats ahead and astern, if possible, to sailracesj@gmail.com prior to 10:00am. Otherwise, a DNF will be scored. This requirement cannot be appealed.
- No results will be released until all finish times are sent to the Fleet Captain.
- Time limit is 7 hours from the first warning signal.

10.4. Rhumbline Regatta

- See separate sailing instructions provided at skippers' meeting.

10.5. Cook Plant buoy race

- All boats will start at the usual time.
- Round the Cook Plant buoy to port.
- Finish is an imaginary line extending **300 feet** into the lake, parallel to the St. Joseph north pier (288 degrees).
- **42°6.996'N 86°29.745'W**
- Each boat shall broadcast her finish time on VHF channel 69 just after crossing the finish.
- Each boat shall email her finish time, including the names of the boat ahead and astern, if possible, to sailracesj@gmail.com prior to 10:00am. Otherwise, a DNF will be scored. This requirement cannot be appealed.
- No results will be released until all finish times are sent to the Fleet Captain.
- Time limit is 8 hours from the first warning signal.



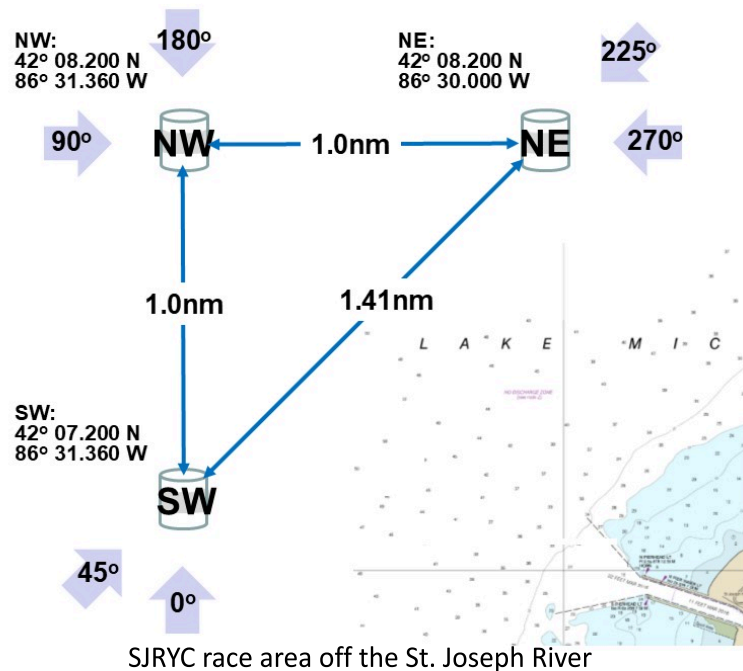
Finish line off St. Joseph River north pier head

11. Risk and Liability

- Notice is hereby given to all participants, including spectators, officials, and others, that participating in these events is solely at their own risk.
- Each sailboat skipper/owner and her individual crew members make their own independent determination of risk and bear the full responsibility for the decision to race in all circumstances. Skippers/owners must inform their crew of these responsibilities.
- Each skipper must sign and date the Waiver of Liability on the Sail Race Fleet Application before racing. Failure to do this will disqualify them from participation.

12. SJRYC Race Courses

12.1. Race area



12.2. Permanent marks

- Mark SW: Located approximately 1.3nm west of the St. Joseph River south pier head and approximately 1.0nm south of mark NW. Coordinates: 42° 07.200 N 86° 31.360 W
- Mark NE: Located 1.0nm east of mark NW and approximately 1.0nm at approximately 355 degrees off north pier head. Coordinates: 42° 08.200 N 86° 30.000 W
- Mark NW: Located approximately 1.0nm north of mark SW, approximately 1.0nm east of mark NE, and approximately 1.7 miles at 315 degrees off north pier head. Coordinates: 42° 08.200 N 86° 31.360 W

12.3. Inflatable marks

- Description of temporary inflatable marks will be announced by the RC team.

12.4. Standard race courses

- The RC will announce one of a set of standard race course configurations for each section, with the goal to achieve a similar race duration for boats in each section.
- A windward/leeward course is preferred for the Spinn sections. A triangle course is preferred for the JaM section.
- See Appendix to this document

SJRYC Race Team

SJRYC Fleet Vice-Commodore: Tony Uhrick

Fleet Captain: Bob Burke (sailracesj@gmail.com)

RC Boat Team Leader: Louie Tremblay (lo12uiet@gmail.com)

Marks Chairman: Ron Groth

Protest Committee Chairman: Paul Falk (pfalk@falkspina.com)

Special Advisor: Chris Koch

Special Advisor: Darryl Rogers

Special Advisor: Nick Cortes