



Kelowna Yacht Club

Commodores Cup Regatta

PHRF Distance Race

August 15 - 17, 2025

Supplementary Sailing Instructions

(Numbering Corresponds to RRS Appendix S)

3.0 COMMUNICATION

All boats must carry a VHF radio capable of communicating on Channel 72.

On the water, the race committee will make courtesy broadcasts to competitors on VHF radio, channel 72.

4 SIGNALS MADE ASHORE

4.1 Signals made ashore will be displayed from a flagpole situated on the western edge of the Commodore's Dock. When flag AP is displayed ashore, '1 minute' is replaced with 'not less than 30 minutes' in Race Signals AP.

5 SCHEDULE OF RACES

Race one - 10:00 am - Saturday August 16, 2025

Race Two - 9:30 am - Sunday August 17, 2025

6 CLASS FLAGS

PHRF single fleet – Numeral Pennant 1 for Wilson Landing course.

7 THE COURSES

A distance race will be sailed each day within the area defined in addendum A.

8 THE MARKS

The Northern rounding mark will be an Orange Tetrahedron off of Wilsons Landing and shall be left to Port.

In the event that the Orange Tetrahedron cannot be set. It will be on the front of the Highfield RIB and the boat will become the Mark.

9 THE START

The starting line is between a staff displaying an orange flag on the signal vessel and X mark.

The start will be to the North and all boats will be started even if it's calm wind.

No spinnakers shall be flown until after the start line has been crossed.

11 THE FINISH

The finishing line is between the blue flag mounted on the Trophy Committee Boat and E Mark.

In case of a shortened course, the Mark boat (Highfield RIB) will display the "S" flag and finish boats at Wilsons Landing.

12 TIME LIMITS

Race time limit is 4 hours.

Mark Coordances

RC 49°54.13N 119°30.95W

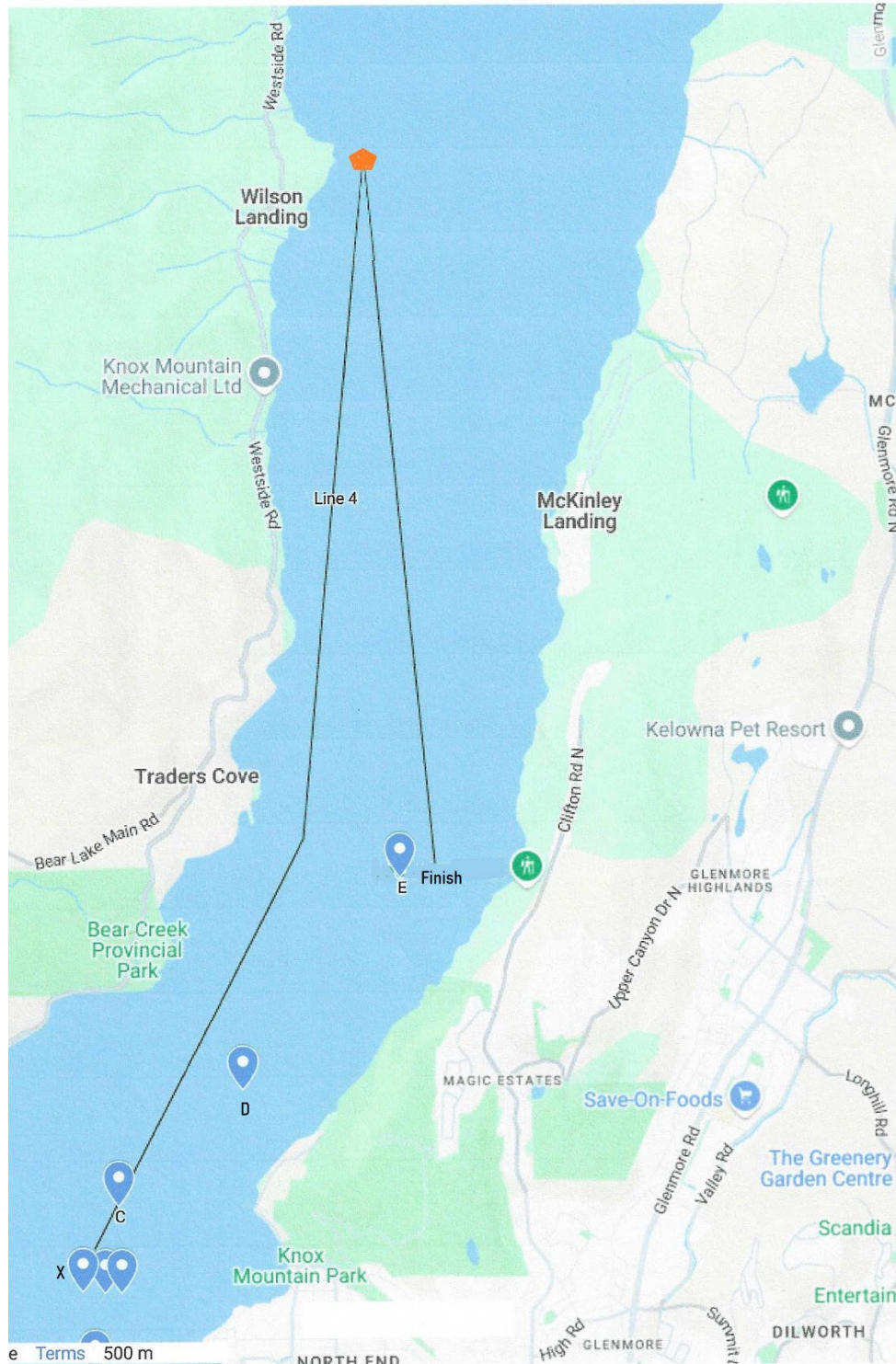
E 49°55.73N 119°29.10W

Wilsons Landing 49°59.14N 119°29.25W

ADDENDUM A

RACE AREA

KYC Commodore's Cup RACE MARKS - Google My Maps



RC to Wilsons Landing & return to E mark approx. 10 miles