



THE 2025 REACH DOWN THE BEACH AND QUANTUM CUP REGATTA SAILING INSTRUCTIONS

Organizing Authority: The Houston Yacht Club Shore Acres, TX USA
To be sailed Friday and Saturday, 09 and 10 May 2025

1. RULES CHANGES FOR BOTH DAYS

- 1.1. The current *Racing Rules of Sailing* (RRS), except as may be modified by these the Sailing Instructions. If there is one-design racing and there is a conflict between Class Rules and the RRS, Class Rules shall apply.
- 1.2. Boats equipped and rated with power winches may use same. This modifies RRS 52.
- 1.3. Boats sailing Single or Double-handed may use autopilots. This modifies RRS 52. Use of autopilots is permitted when more than 500 yards from the start line and up to 500 yards from the finish line. This changes RRS 52.
- 1.4. Between the hours of sunset and sunrise, the rules of Part 2 are replaced with the International Regulations for Preventing Collisions at Sea (IRPCAS).
- 1.5. The US SAILING Prescriptions to the RRS will apply.
- 1.6. The current PHRF Regulations as administered by PHRF Galveston Bay apply.
- 1.7. The current US Sailing Safety Equipment Requirements (USSER). These requirements are available at <https://www.ussailing.org/competition/offshore/safety-information/ser-world-sailing-special-regulations/>. A copy of these requirements should be kept aboard while racing. In the event of a conflict between these requirements and applicable class rules, the class rules shall apply.
- 1.8. The current IMS Rule (measurement) rules and regulations apply (www.orc.org/rules).
- 1.9. Each boat shall carry an operating VHF radio capable of transmitting and receiving on Channels 13, 14, 16, 68, 72 and a cell phone. The phone number to this device shall be on file with the Race Committee (via your registration).
- 1.10. The Friday race will feature a window start. This changes Rule 26.
- 1.11. The Saturday race:
 - 1.11.1.1. For the Saturday race – if for some reason our chartered signal boat no-shows, all classes shall revert to a window start. In this style of start, competitors will start within a time window defined in these Sailing Instructions. The exact start time will be of the Skipper's choosing inside that window. The Race Committee shall capture the individual start times of each boat. The Race Committee shall capture the finish times of each boat and apply handicaps to calculate corrected times and finish positions. This changes RRS 26.
- 1.12. Appendix T1 will apply.
 - 1.12.1.1. Appendix T1.b is modified to read: "A Post-Race Penalty is a 20% Scoring Penalty calculated as stated in rule 44.3(c) if taken before the protest time limit expires. Otherwise, a Post-Race Penalty is a 30% Scoring Penalty calculated as stated in rule 44.3(c). However, rule 44.1(a) applies."
- 1.13. US SAILING Prescription to the RRS Appendix V Rules V1 and V2 will apply.

2. NOTICES TO COMPETITORS

- 1.1. Notices to competitors will be posted on the Official Notice Board located at [Official Notice Board](#) or by clicking here: [Regatta Network Event Website](#)
- 1.2. Notices to competitors will be broadcast via VHF as per 11.1 of these SI's at the start line, finish line, and/or announced at the official regatta party in Freeport as appropriate.

3. CHANGES TO SAILING INSTRUCTIONS

- 1.1. Any written changes to these sailing instructions will be distributed by e-mail no later than 9:00 a.m. Thursday 08 May.
- 1.2. Verbal changes may be made on the water and shall be communicated to each boat by VHF before her warning signal.

4. SIGNALS MADE ASHORE

- 1.1. Any decision to abandon race will be announced via cell phone call to the number on record.
- 1.2. Any decision to postpone will be announced via cell phone call to the number on record.

FRIDAY RACE

1. SCHEDULE OF RACES

- 1.1. The starting window opens from 8:00 am and closes at 12:00 pm. Competitors are to start at the time of their choosing within this window.
- 1.2. The Race committee will monitor and record start times from the beach.
- 1.3. Each class will sail a single race.

2. RACING AREA

- 2.1. **Illustration 1** shows the location of the racing areas.

3. THE COURSES

- 3.1. The diagram in **Illustration 1** shows the course, a straight line to Freeport.
- 3.2. The course will be 40.7 nm miles in length.
- 3.3. The start is at **Galveston Channel marker #11** (N29 20.536 W94 44.472). Sail from Galveston Channel marker # 11 to the 5A marker (29° 19.659'N, 94° 41.336'W) 3.0 nm leaving it to starboard.
- 3.4. Sail to the finish in Freeport.

4. MARKS

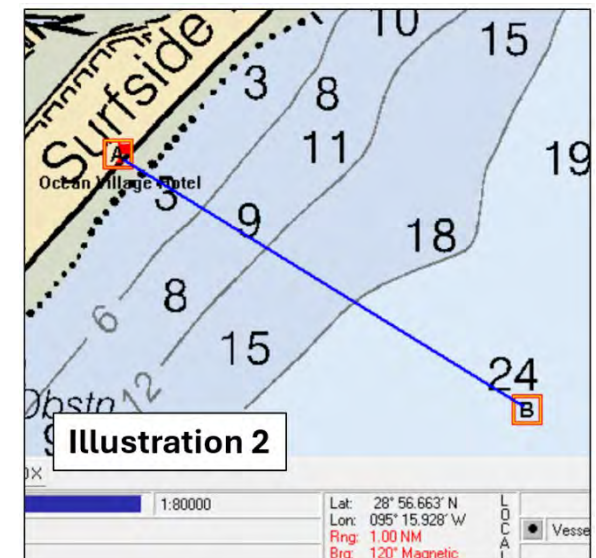
- 4.1. The starting line is between the Bolivar Roads channel marker green 11 (N29 20.556 W94 44.462) at the port end and **an orange tarp** on the Official Signal Vehicle (bearing approximately 180°) on the starboard end beach.
- 4.2. In the absence of a signal vehicle, competitors will be crossing the start line when they sight the Green 11 marker at exactly 0 degrees.
- 4.3. The first rounding mark is the Galveston 5A marker. Leave it to starboard... please.
- 4.4. The finish line is between a virtual mark located off Surfside (at: **N28° 56.663 W95° 15.928**) and the Race Committee which will be comfortably seated at The Seahorse Bar and Grille in Surfside Beach. The Race Committee will attempt to display an orange tarp from the balcony. You have crossed the finish line when you are looking back at the tarp at 300°. We will be looking at you at 120°

5. THE START

- 5.1. All boats are to hail the race committee as per 11.1 in these SI's. and check in by name and sail number via VHF. Please include the total number of souls on board including the skipper. All skippers are encouraged to send a list of crew names by email (or text message) to the race committee after all are aboard – precision is important.
- 5.2. Races will start during a starting window as described above.
- 5.3. Official time is GPS time.
- 5.4. The race committee will be monitoring and recording start times.

6. THE FINISH is off Surfside Beach.

- 6.1. All racers are to hail the race committee by vessel name on VHF as per 11.1 of these SI's when within approximately 1 mile of the finish



line.

- 6.2. All racers are to stand by for instructions relating to possible security operations underway in the Freeport Channel.
- 6.3. The race committee will be on station between 1200 and ~~1600~~ 1800 hours. Any yacht finishing earlier than that shall record her approximate finish time and position relative to other boats in the area. Please turn that information in to the race committee ashore.
- 6.4. **Illustration 2** illustrates the finish area. The pin is virtual.

7. TIME LIMITS

- 7.1. The race shall end at ~~1600~~ 1800 hours CDT, Friday 09 May, or when the last yacht finishes, whichever is earlier.
- 7.2. Yachts which have not finished at the expiration of the time limit will be scored DNF without a hearing. This changes rules 35, A4 and A5.

8. PROTESTS

- 8.1. Protest forms are found in **Addendum A** to these Sailing Instructions.
- 8.2. Competitors intending to file a protest must notify the race committee (via VHF or phone) at the first reasonable opportunity.
- 8.3. For each class, the protest deadline is 6:00 p.m. Friday 09 May.
- 8.4. For the purpose of meeting obligations under US Sailing prescriptions concerning redress, notification of a redress hearing shall be by posting on the official protest table (look for Jay Grills) for thirty minutes. The requirement for written requests for attendance at the hearing will be satisfied by a signup sheet at the official protest table. No more than one person per boat may attend. No request for reopening a hearing will be accepted after 7 p.m. 09 May.
- 8.5. All notices and hearings will be announced at the regatta party, Dorados.

9. SCORING

- 9.1. The Low-Point Scoring system, Appendix A, shall apply.
- 9.2. One race is required to be completed to constitute a series.
- 9.3. As this is a starting window-style race. Results will be calculated offline. Order of finish will be shown on Regatta Network. In the interests of transparency, actual start / finish times and the associated calculations will be emailed to each competitor.

10. SAFETY REGULATIONS

- 10.1. Any yacht that starts and then retires or withdraws before finishing the race shall notify the Race Committee on VHF or cell phone or if that is not possible the Houston Yacht Club office (phone number 281.471.1255).

11. COMMUNICATIONS

- 11.1. The official regatta channel shall be VHF Channel 68.
- 11.2. The Race Committee will also be available by telephone at 832.428.0785 (PRO)
A secondary phone number is: 281.910.0942 (Chief Judge)
- 11.3. All yachts are encouraged to monitor VHF channel 13 when in the Houston Ship Channel
- 11.4. All yachts are encouraged to monitor VHF channel 14 when in the Freeport Channel for instructions from the harbor pilots.
- 11.5. The Event Chairman is available by email (billvanrav@gmail.com) and cell phone (832) 429-0785



THE 2025 REACH DOWN THE BEACH AND QUANTUM CUP REGATTA SAILING INSTRUCTIONS

12. PRIZES

- 12.2. Trophies will be awarded based on final registration volumes.
- 12.3. Registrations received after the trophy order has been placed shall be awarded IOU's in place of the actual trophy
- 12.4. The race committee shall deliver owed trophies at a mutually agreeable time and place at a later date.
- 12.5. Prizes will be awarded Friday at Dorados Bar and Grill.

13. INSURANCE

- 13.2. Each participating boat shall be insured with valid third-party liability insurance with a minimum cover of \$300,000 per incident or the equivalent.

14. USE OF ENGINES

- 14.2. Engines may be used in an emergency. After the emergency is resolved, competitors are to return to the closest point possible to where the engine was initially engaged and continue the race.
- 14.3. Engines may be used to charge batteries.
- 14.4. Use of engines is prohibited except as permitted above.

15. PROHIBITED EQUIPMENT

- 15.2. Use of electric winches is prohibited except as stated in section 1 RULES CHANGES FOR BOTH DAYS 1.2 above.
- 15.3. Use of a self-steering system is prohibited except as stated in section 1 RULES CHANGES FOR BOTH DAYS 1.3 above.

16. HANDICAPS

- 16.2. All PHRF class yachts must be handicapped by PHRF Galveston Bay for 2024.
- 16.3. All TOMA class yachts must be handicapped by the Texas Offshore Multihull Association.

ADDENDUM A: PROTEST FORM – LAST PAGE

SATURDAY RACE

1. SCHEDULE OF RACES

- 1.1. No warning signal before 9:00 a.m. The starting sequence will be as described in section 6 below.
- 1.2. Each class will sail a single race

2. CLASS FLAGS and STARTING SEQUENCE

- 2.1. 1st START TOMA MULTIHULL: **Pink**
- 2.2. 2nd PHRF SPINNAKER: **Navy**
- 2.3. 3rd PHRF NON-SPINNAKER: **Brown**
- 2.4. 9:00 to 10:00 am Starting window is open for the B'nB Class. This class has no class flag.

3. RACING AREA

- 3.1. **Illustration 3** shows the location of the racing areas.

4. THE COURSES

- 4.1. The diagrams in the Course Option Illustrations section show the courses, including the order in which marks are to be passed.
- 4.2. There are four course options. These options are numbered 1 – 4 and will be signaled by a numeric flag no later than the warning signal for the class.
 - 4.2.1. The Bimini's n' Barbecues class will sail course 4.
- 4.3. In the event of a window start (6.1.1 below), the course will be signaled by flying the class flag on a staff with the course numerical flag flying below it. This will be displayed BEFORE the Orange flag is displayed. It is OK to hail the Race Committee to confirm your course number.

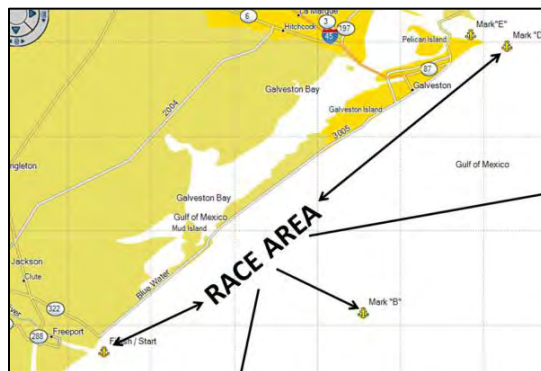


ILLUSTRATION 3: RACING AREA

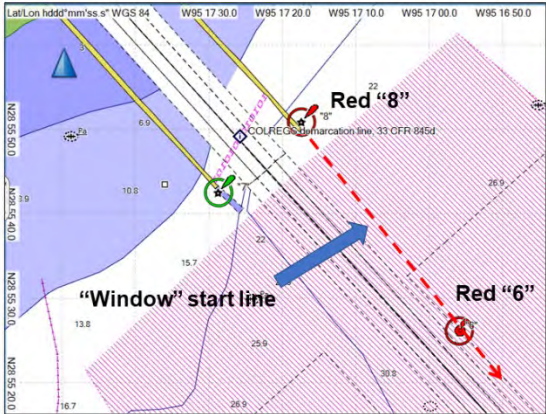
5. MARKS

The Marks...		Lat/Lon hddd°mm.mmm'	Lat/Lon hddd°mm'ss.s
A	Freeport Outer Buoy "Fp",Mo	N28 52.628 W95 14.140	N28 52 37.7 W95 14 08.4
B	Mitchell's Reef (GA - 189)	N29 08.589 W94 40.820	N29 08 35.3 W94 40 49.2
C	Buckaneer GA 288 C	N28 53.648 W94 42.263	N28 53 38.9 W94 42 15.8
D	Station KXIH - High Island 179A AWOS (Apache Co	N29 10.800 W94 31.267	N29 10 48.0 W94 31 16.0
E	Heald Bank Rig MEHI-H1199-A	N29 08.018 W94 11.758	N29 08 01.1 W94 11 45.5
F	GA 5a, Iso G 30ft 6m Ra Ref	N29 19.639 W94 41.264	N29 19 38.3 W94 41 15.8
G	GA 11 FL G2.5S	N29 20.556 W94 44.462	N29 20 33.4 W94 44 27.7

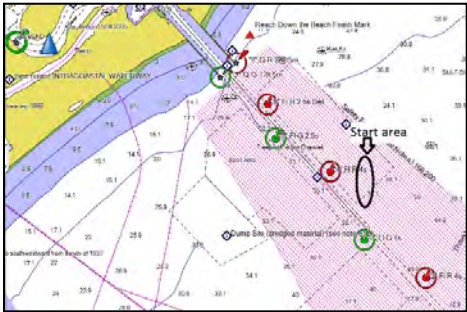
- 5.1. The starting pin will be an orange ball (for Rule 26 starts).
- 5.2. The finish pin will be mark G (GALVESTON 11) described below. This changes Rule 11.1.

6. THE START

- 6.1. TOMA and PHRF races will be started per RRS Rule 26 with one significant exception noted in 6.1.1, below. **SECTION 6.1 ONLY APPLIES IF WE LOSE OUR SIGNAL BOAT AND HAVE TO START YOU OFF THE END OF THE JETTY.**
 - 6.1.1. If weather conditions are deemed to be unsuitable for a stationary signal boat, or the signal boat is not available, the start will default to the starting window format and we will race our standard course options.
 - 6.1.2. In the event of a starting window: The window “opens” when the Race Committee hoists an orange flag on a staff no earlier than 8:30 am. The Race committee will wait for the first boat to approach the start line. The first boat shall signal her readiness to start via VHF. At this point the Race Committee will raise the orange flag. The Race Committee must be present on the end of the jetty for the window to open. Boats may start at any time in this period. The window “closes” after 30 minutes have elapsed. The Race Committee will then lower the orange flag.
 - 6.1.3. In the event of a starting window: The start line will be the extension of the line between Red “8” and Red “6” on the North side of the jetties. You are to cross this line on the far side of Red “6” (i.e. between Red “6” and Red “4”). This is to keep you away from the boulders which form the jetty.
- 6.2. Brazos Pilot will determine when we are clear to advance up the jetties. We will begin communications with Brazos Pilot at 7:30 on VHF Channel 14, all are welcome to monitor VHF 14. There will be a Race Committee Representative at Surfside Marina to facilitate communications regarding when we are clear to proceed.



PHRF START AREA



Rule 26 Start Area

- 6.3. For a Rule 26 start, the start line will be between a staff flying an orange flag on the signal boat and the course side of the starting pin. The starting pin will be an orange ball.
- 6.4. For a Rule 26 start, boats whose warning signal has not been made shall avoid the starting area during the starting sequence for other races.
- 6.5. For a Rule 26 start, a boat starting more than 5 minutes after her starting signal will be scored Did Not Start without a hearing. This changes rule A4.
- 6.6. The B 'n B fleet will refrain from entering the starting area while the other classes are in sequence. Look for a pink, navy or brown class flag. If these flags are not flying, the area is clear.
- 6.7. Official time is GPS time.

7. THE FINISH

- 7.1. The finish line will be between an orange tarp on the official signal vehicle on the beach (bearing = 215 °) and the course side of the finish pin WHICH IS Galveston Green 11. This changes Rule 11.1.
- 7.2. Please attempt to hail the race committee via VHF to alert them to your presence at the mark.
- 7.3. If the race committee is absent when a boat finishes, she should report her finishing time, and her position in relation to the rest of the fleet (as best as she can determine), to the race committee at the first reasonable opportunity.

8. TIME LIMITS

- 8.1. The race shall end at 0800 hours CDT, Sunday 12 May 2023, or when the last yacht finishes, whichever is earlier.
- 8.2. Yachts which have not finished at the expiration of the time limit will be scored Did Not Finish without a hearing. This changes rules 35, A4 and A5.

9. PROTESTS

- 9.1. Protest forms are found in Addendum A to these Sailing Instructions. Protests and requests for redress or reopening shall be delivered to the HYC Office within the appropriate time limit.
- 9.2. Competitors intending to file a protest must notify the race committee (by VHF or 832.428.0785) at the first reasonable opportunity.
- 9.3. For each class, the protest deadline is 10:00 a.m. Sunday 12 May.
- 9.3.1. Should a competitor be unable to reach the HYC office before the protest deadline expires, a photograph of the front and back of the signed protest form will be accepted by the protest committee via e-mail. This email must be time-stamped before the time limit expires. If it is time stamped after the time limit has expired the protest will be found invalid. The signed original of the protest form must be turned in to the protest committee before any hearing can take place. Please see 12.3 – Communications.
- 9.4. All notices will be posted on the HYC Official Notice board in the breezeway next to the HYC offices.
- 9.5. Notices will be posted no later than 30 minutes after the protest deadline to inform competitors of hearings in which they are parties or named as witnesses.
- 9.6. Hearings will be held in the protest room and time as posted by the protest committee.
- 9.7. Notices of protests by the race committee or protest committee will be posted to inform boats under rule 61.1(b).
 - 9.7.1. Please see sections 1.13 and 1.14, above.

10. SCORING

- 10.1. The Low-Point Scoring system, Appendix A, shall apply.
- 10.2. One race constitutes a series.
- 10.3. No score shall be excluded. This changes rule A2.
- 10.4. In the event of a starting window-style race. Results will be calculated offline. Order of finish will be shown on Regatta Network. In the interests of transparency, actual start / finish times and the associated calculations will be emailed to each competitor.

11. SAFETY REGULATIONS

- 11.1. Prior to the first warning signal, each yacht shall check-in with the Race Committee. The procedure shall be to sail within line of sight of the Race Committee, hail on channel 68 and repeat your sail number, yacht name, and

the number of crew on board until acknowledged by the R/C.

11.1.1. Skippers are encouraged to e-mail or text the team roster to the race committee in advance.

11.2. Any yacht that starts, and then retires or withdraws before finishing the race shall notify the Race Committee on VHF channel 68, cell phone (832.428.0785) or if that is not possible the Houston Yacht Club office (phone number 281.471.1255). Please do this...

12. COMMUNICATIONS

12.1. The official communications channel is VHF channel 68.

12.2. The Race Committee will also be available by telephone at 832.428.0785 (PRO) or 281.910.0942 (Chief Judge).

12.3. Email communications:

12.3.1. Protest Committee: jjgrills@gmail.com

12.3.2. Race Committee: billvanrav@gmail.com

12.4. While offshore, all yachts are encouraged to monitor channel 16 and to communicate potential hazards to other racers. This changes Rule 41.

12.5. All yachts should also monitor VHF Channel 13 when in the vicinity of the Houston Ship Channel for commercial traffic concerns.

13. PRIZES

13.1. The Carroll Blanchard perpetual trophy will be awarded to the boat finishing first in the Spinnaker Class.

13.2. Trophies will be awarded based on final registration volumes.

13.3. Registrations received after the trophy order has been placed shall be awarded IOU's in place of the actual trophy.

13.4. The race committee shall deliver owed trophies at a mutually agreeable time and place at a later date.

13.5. Prizes will be awarded Sunday May 12 at 1:00 p.m. at the HYC Bar.

14. INSURANCE

14.1. Each participating boat shall be insured with valid third-party liability insurance with a minimum cover of \$300,000 per incident or the equivalent.

15. USE OF ENGINES

15.1. Engines may be used in an emergency. After the emergency is resolved, competitors are to return to the closest point possible at which the engine was engaged and continue the race

15.2. Engines may be used to charge batteries

15.3. Use of engines is prohibited except as permitted above.

16. PROHIBITED EQUIPMENT

1. Use of electric winches is prohibited except as stated in section **1. RULES FOR BOTH DAYS** 1.2 above.

2. Use of a self-steering system is prohibited except as stated in section **1. RULES FOR BOTH DAYS** 1.3 above.

17. HANDICAPS

17.1. All PHRF Non-Spinnaker class yachts must be handicapped by PHRF Galveston Bay for 2023.

17.2. All TOMA class yachts must be handicapped by the Texas Offshore Multihull Association.

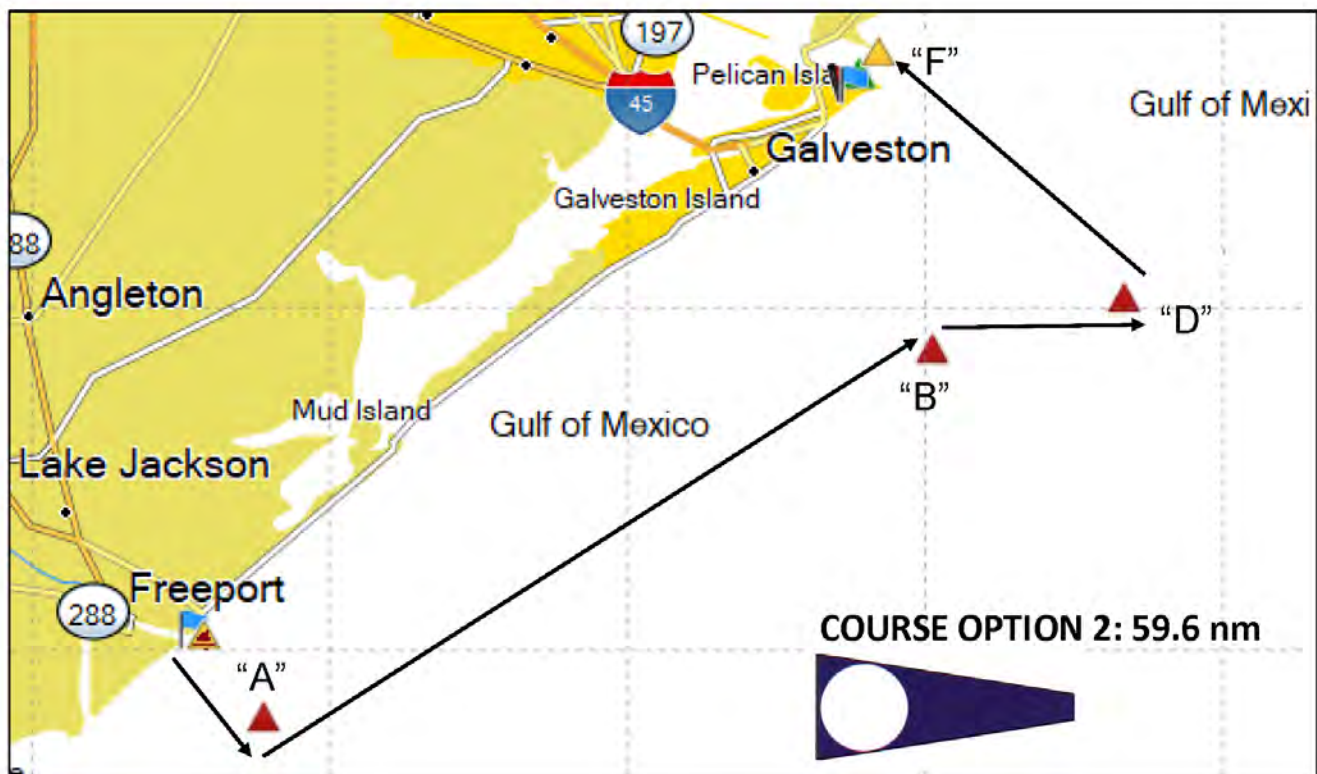
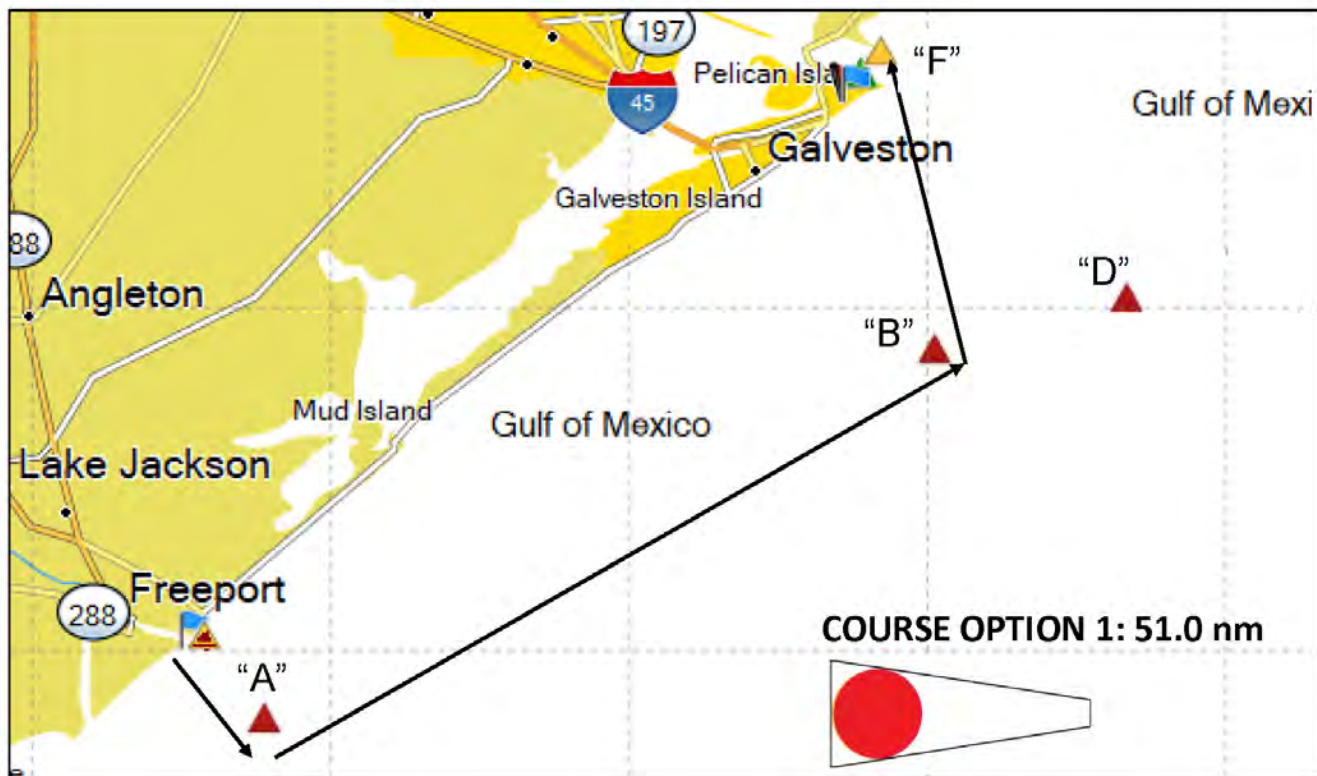
18. COURSE OPTION ILLUSTRATIONS

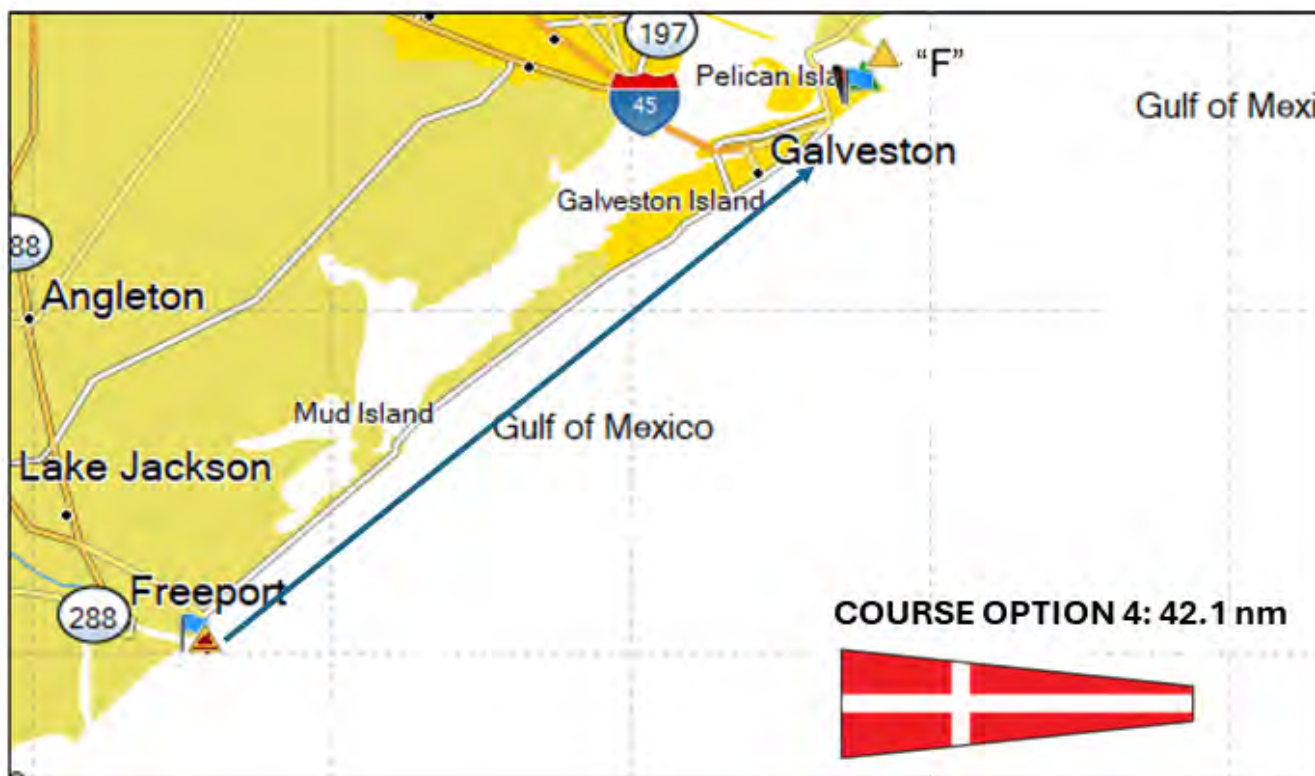
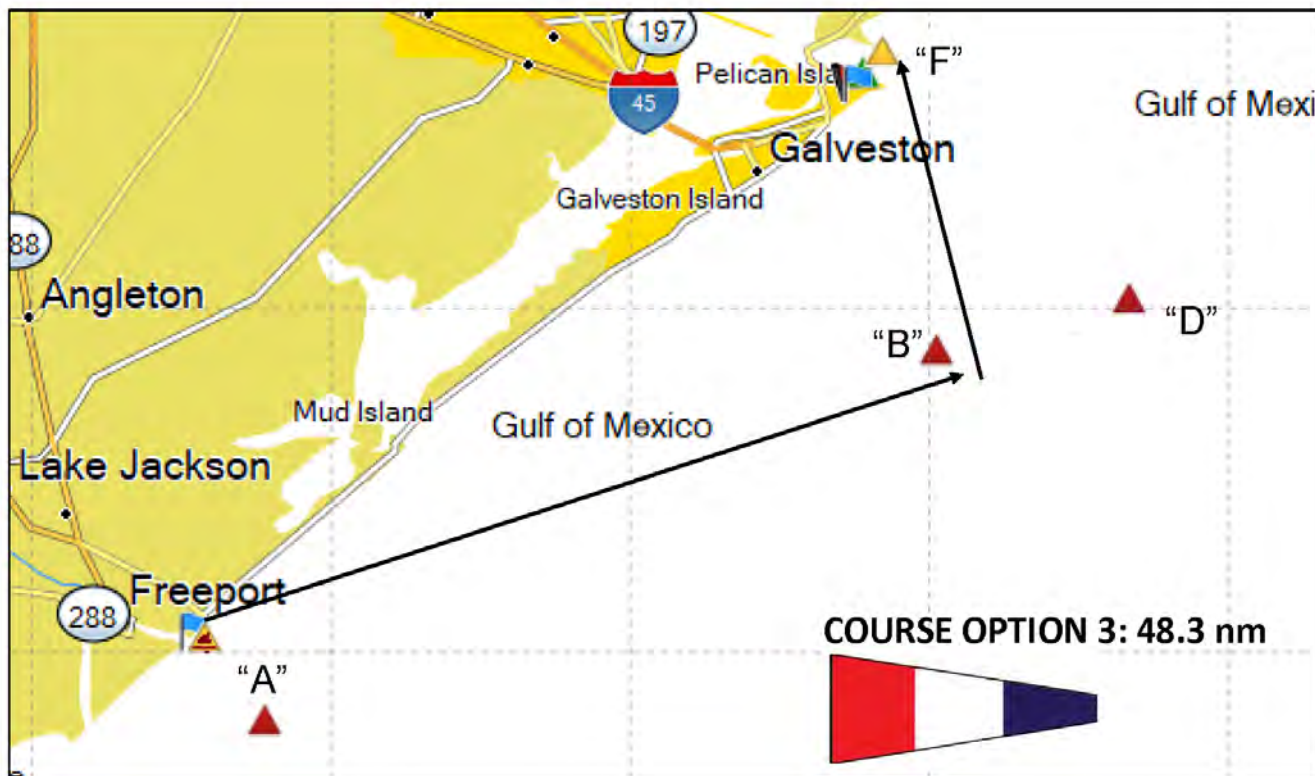
Course Option 1					
From	To	Description	Leave mark to:	Distance	Bearing
Starting area	A	Freeport Outer Buoy "Fp", Mo	Port	4.0	145°
A	B	Mitchell's Reef (GA - 189)	Port	33.0	62°
B	F	GA 5a, Iso G 30ft 6m Ra Ref	Port	11.0	358°
F	G	GA 11 FL G2.5S		3.0	
				51.0	

Course Option 2					
From	To	Description	Leave mark to:	Distance	Bearing
Starting area	A	Freeport Outer Buoy "Fp", Mo	Port	4.0	145°
A	B	Mitchell's Reef (GA - 189)	Starboard	33.0	62°
B	D	Station KXIH - High Island 179A AWOS (Apache Corp)	Port	8.6	75°
D	F	GA 5a, Iso G 30ft 6m Ra Ref	Port	11.0	358°
F	G	GA 11 FL G2.5S		3.0	
				59.6	

Course Option 3					
From	To	Description	Leave mark to:	Distance	Bearing
Starting area	B	Mitchell's Reef (GA - 189)	Port	34.3	68°
B	F	GA 5a, Iso G 30ft 6m Ra Ref	Port	11.0	358
F	G	GA 11 FL G2.5S		3.0	
				48.3	

Course Option 4					
From	To	Description	Leave mark to:	Distance	Bearing
Starting area	F	GA 5a, Iso G 30ft 6m Ra Ref	Port	39.1	52
F	G	GA 11 FL G2.5S	Port	3.0	358
				42.1	





ADDENDUM A



ussailing.org

HEARING REQUEST for protests, requests for redress, and reopening

FOR COMMITTEE USE

Time & date received _____ Rec'd by _____

Protest time limit _____ Filing # _____

Race # _____ Day/Date of Race _____

Event/Series _____

Type of Hearing _____

Protest

☐

Redress

☐

Reopening

☐

Boat or Committee Protesting or Requesting

Making allegation, claim, or request

Boat (sail # / name) _____

-OR- Committee _____

Represented by _____

Mobile phone _____

Email _____

Protestee(s) or Committee/Body

Alleged to have broken a rule, or made an improper action or omission

Boat (sail # / name) _____

Boat (sail # / name) _____

Boat (sail # / name) _____

Boat (sail # / name) _____

-OR- Committee/Body _____

For a protest only, informing the protestee: How did you inform the other boat of your intent to protest?

If "Yes" when (for each)?

By hailing?

☐ No☐ Yes

Words used?

By displaying a red flag?

☐ No☐ Yes

Some other way?

☐ No☐ Yes

Where / how?

The incident

For a protest: When and where did it happen? (e.g. ½ way along first upwind leg, pre-start just below pin, etc.)

For protests, please describe the incident. For redress or reopening, please state the reasons.

Rules alleged to have been broken



HEARING REQUEST (continued)

For either a protest or a request for redress or reopening (if relevant)

Diagram Include wind and current (or continue the description of the incident and/or reasons)

Witnesses Please list by name

USE ONLY TO WITHDRAW FILING	
I request to withdraw this filing	Filing withdrawal approved
<div>Signature of representative</div>	<div>Signature of PC member</div>
Print name	Print name