



NYCC Annual Jr Regatta
June 24, 2025
Norfolk Yacht and Country Club
Norfolk, Virginia

SAILING INSTRUCTIONS

1 RULES

The CBYRA Sanctioned High Point junior regattas will be governed by the current RRS, CBYRA, International Optimist Dinghy Class rules, ILCA Class rules, 420 Class Assoc. rules, except as altered by these sailing instructions.

2 NOTICES TO COMPETITORS

Notices to competitors will be posted on the official notice board located at the window of the NYCC Sailing Center.

3 CHANGES TO SAILING INSTRUCTIONS

Any change to the sailing instructions will be posted before 0900 on the day it will take effect.

4 SIGNALS MADE ASHORE

4.1 Signals made ashore will be displayed at the NYCC flagpole.

4.2 When flag AP is displayed ashore, '1 minute' is replaced with 'not less than 30 minutes' in the race signal AP.

4.3 When flag Y is displayed ashore, rule 40 applies at all times while afloat. This changes the Part 4 preamble.

5 SCHEDULE

5.1 June 24th, 2025

8:00 am-9:00 am Registration on patio outside Sailing Center.

9:30 am Competitor's Meeting on back lawn by flagpole.

9:45 am Harbor Start

10:30 am Warning Signal first race

4:00 pm No Warning Signal afterwards

Awards will be presented outside of the Skipper's Lounge.

6

CLASS FLAGS

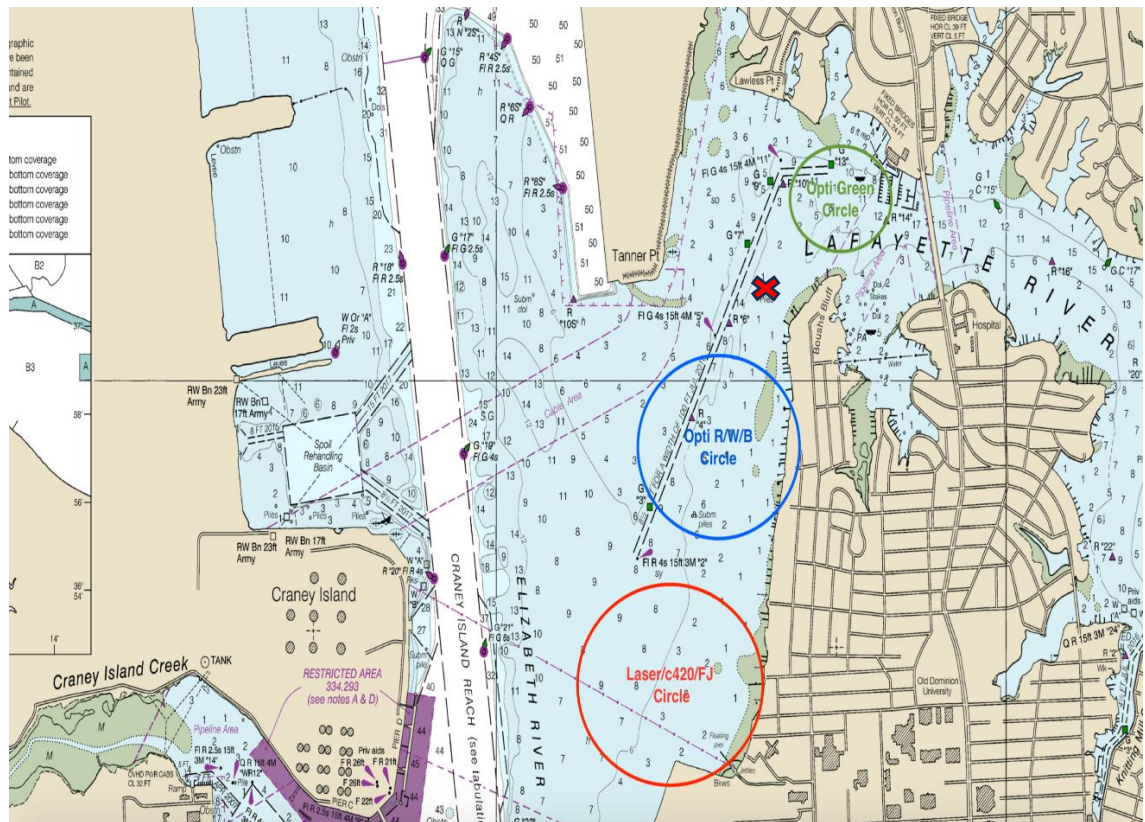
Class flags will be:

<i>Class</i>	<i>Flag</i>
Club 420	class flag
ILCA 4	class flag
ILCA 6	class flag
Optimist RWB	blue class flag
Optimist Green	green class flag

7

RACING AREAS

The red X indicated an underwater hazard. The structure is marked with a faded buoy, please stay clear.



8

THE COURSES

8.1

No later than the warning signal, the race committee signal boat will display the course signal.

9 MARKS

9.1 The start pin will be an orange mark for ILCA4/ILCA 6/c420. Opti R/W/B will also be an orange mark. The windward mark of ILCA 4/ILCA 6/c420 and Opti RWB will be pink tetrahedrons and their offset and gate marks will be pink ball marks OR pink tetrahedrons. The finish mark of ILCA4/ILCA 6/c420 and Opti RWB will be white.

9.2 Opti Green fleet circle finish mark will be a white ball mark. All other marks will be orange ball marks.

9.3 Change of course marks will be an orange ball mark.

10 THE START

10.1 Races will be started by using rule 26 with the warning signal made 5 minutes before the starting signal.

10.2 The starting line will be between a staff displaying an orange flag at the starboard end and a small ball mark for the pin or the port-end starting mark.

10.3 Boats whose warning signal has not been made shall avoid the starting area during the starting sequence for other races.

10.4 A boat starting later than 5 minutes after her starting signal will be scored Did Not Start without a hearing. This changes rule A4.

11 CHANGE OF THE NEXT LEG OF THE COURSE

To change the next leg of the course, the race committee will lay a new mark (or move the finishing line) and remove the original mark as soon as practicable. When in a subsequent change a new mark is replaced, it will be replaced by an original mark.

12 THE FINISH

The finishing line will be between a staff displaying an orange flag on the finishing mark boat and a nearby finishing mark.

13 TIME LIMITS

13.1 If no boat has finished within the 60 minute time limit the race will be abandoned.

13.2 Boats failing to finish within 20 minutes after the first boat sails the course and finishes will be scored Did Not Finish without a hearing. This changes rules 35, A4 and A5.

14 PROTESTS AND REQUESTS FOR REDRESS

14.1 Protest forms are available at the Sailing Center, located near the Official Notice Board. Protests and requests for redress or reopening shall be delivered there within the appropriate time limit.

14.2 For each class, the protest time limit is 90 minutes after the last boat has finished the last race of the day or the race committee signals no more racing today, whichever is later.

14.3 Notices will be posted no later than 10 minutes after the protest time limit to inform competitors of hearings in which they are parties or named as witnesses. Hearings will be held in the protest room, Skippers Lounge, beginning at the time posted.

14.4 Notices of protests by the race committee or protest committee will be posted to inform boats under rule 61.1(b).

15 SCORING

15.1 One race is required to be completed to constitute a series.

15.2 (a) When fewer than 4 races have been completed, a boat's series score will be the total of her race scores.

(b) When 5 races have been completed, a boat's series score will be the total of her race scores excluding her worst score.

16 SAFETY REGULATIONS

All competitors are required to pass astern of the RC signal boat on Starboard tack, hail their number and receive acknowledgement before the start of race 1.

All competitors and support personnel will be required to wear a USCG approved type III lifejacket at all times afloat, abet a brief time when changing clothing. Inflatables are not permitted. Competitors from foreign countries must abide by these requirements. Failure to comply will be grounds for team/club DSQ of sailors from all races. **RRS 64.4(b) will be in effect without a hearing. This changes RRS 63.1.***(RRS definition of a support person RRS pg 7).* Support/parent/coach vessels shall remain outside the course from the time of the Prep flag until all racers have finished the race.

All competitors are required to keep clear of the main shipping channel on the Elizabeth River.

17 SUBSTANCE ABUSE

Immediately before, during, and immediately after, no contestant shall use, either on or off the water, alcoholic beverages (beer, wine, or distilled spirits, each as defined in Chap 51 of the US Internal Revenue Code and intended for beverage use), or marijuana, cocaine, or any other controlled substance (as defined in 21 US Code 802), the possession of which, by that contestant is unlawful under 21 US Code 841.

Infringements of this regulation or other discipline expectations occurring during the event may be the basis for a hearing under RRS 69.1. The protest committee for such a hearing shall be the regatta chairperson, a member of the CBYRA Board of Directors, and the protest committee chairperson. This protest committee shall, at a time and place selected by them, meet to hear said protest, and their decision to impose scoring penalties, or other sanctions they alone deem appropriate, including summary removal from the regatta, shall be final, without appeal.

18 BEHAVIOR

Participants are expected to act in a sportsmanlike manner at all times on and off the water throughout the entire event. Participants include but not limited to all competitors, support personnel and spectator parents. RRS Basic Principles are expected to be followed. It is expected that all in attendance of this regatta will promote and set an example of safe boating. *In the event the RC deems a vessel unfit to attend the race course vicinity, the RC will go into postponement until the issue is resolved.* This changes RRS 64.4.

19 RADIO/ELECTRONICS

The use of GoPro or like recording cameras are acceptable but the use of any type of tracking program or device, Velocitec, iPhone, Android, etc. is prohibited.

20 TRASH

Boats will not put trash in the water. All trash aboard the boats will be contained such that in the event of a capsized; no trash shall not float away. Trash shall be placed in appropriate receptacles ashore. Breach of this rule will be grounds for DSQ without a hearing. This changes RRS 55 and 63.1

19 PRIZES

Prizes will be awarded to the top three finishers in ILCA 4, ILCA 6, c420, and Optimist RWB unless less than 3 are registered in a class. If three or less sailors are registered in a class, the top one finisher will be awarded a prize. Participation awards will be presented to Optimist Green fleet sailors. Top female sailors for each fleet will be awarded.

20 DISCLAIMER OF LIABILITY

Competitors participate in the regatta entirely at their own risk. See rule 4, Decision to Race. The organizing authority will not accept any liability for material damage or personal injury or death sustained in conjunction with or prior to, during, or after the regatta.

SI Attachment 1 – Courses for c420/ILCA and Opti R/W/B
Green Fleet will sail Course TL2 or L

