

**2025 Chubb US Youth Triplehanded
Championship
Sears Cup Area F Qualifier**
June 7-8, 2025
Fort Worth, TX

SAILING INSTRUCTIONS (SIs)

Organizing Authority: US Sailing
Host Club: Fort Worth Boat Club

The notation '[DP]' in a rule in the NoR means that the penalty for a breach of that rule may, at the discretion of the protest committee, be less than disqualification. The notation '[NP]' in a rule of the NoR means that a boat may not protest another boat for breaking that rule nor request redress based on that rule. This changes RRS 60.1 and 61.1.

1. RULES

- 1.1. The event is governed by the rules as defined in *The Racing Rules of Sailing* (RRS) as detailed in the notice of race (published on txsail.org).
- 1.2.
 - (a) SI Addendum B, Handling of Boats, applies at all times, including practicing and when sailing to/ from the racing area.
 - (b) RRS Appendix D5, Breakdowns When Boats Are Supplied by the Organizing Authority, shall be used. RRS D5.2 is changed to substitute verbal notice for signaling a breakdown on the boat. Reference to umpire is replaced with PC.

2. SAFETY

- 2.1. [DP] Each competitor shall wear a USCG-approved life jacket, in good condition, that is 100% dependent on foam for flotation and the appropriate size for the sailor, at all times while on the water except briefly while changing or adjusting clothing or personal equipment. The PFD must be worn outside of all clothing except that a thin shirt or bib may be worn over the PFD to prevent snagging.
- 2.2. [DP] Check-in - Before the warning signal of the first race in which they intend to compete each day, boats shall check in by sailing by their class's RC signal boat. Each boat shall hail her recall number until acknowledged by the signal boat. The race committee may protest a boat that fail to check in.
- 2.3. [DP] A boat that retires from a race shall notify the race committee at the first reasonable opportunity.

3. CHANGES TO SAILING INSTRUCTIONS

- 3.1. Any change to the sailing instructions will be posted no later than 1030 before the first scheduled warning signal on the day it will take effect, except that any change to the schedule of races will be posted by 2000 on the day before it will take effect.

4. COMMUNICATION

- 4.1. The official notice board is online and can be found on txsail.org.
- 4.2. The race office is located at the FWBC Youth Sailing Facility

5. SIGNALS MADE ASHORE

- 5.1. Signals made ashore will be displayed at the flagpole near the Youth Sailing Facility
- 5.2. When flag AP is displayed ashore, '1 minute' is replaced with 'not less than 30 minutes' in Race Signals AP.

6. SCHEDULE OF RACES

- 6.1. See the notice of race.
 - 6.2. The OA will attempt to race until the time limit on Saturday
 - 6.3. The warning signal for succeeding races will be made as soon as possible after finish of preceding race.
 - 6.4. To alert boats that a race will begin soon, an orange flag will be displayed with one sound at least 1 minutes before a warning signal is displayed.
-

- 6.5. Weather conditions, the need to protect borrowed boats and equipment, or the need to expedite the completion of the event may require procedures other than those mentioned in these SIs. Any such special procedures shall be approved by the protest committee.

7. CLASS FLAGS

- 7.1. The class flag will be announced at the competitors meeting

8. RACING AREA

- 8.1. The racing area will be on the waters of Eagle Mountain Lake in the vicinity of the Fort Worth Boat Club. Boats shall not sail between the marker buoys surrounding the Azle water pump station because of the Regulations of the Tarrant Regional Water District. This area is considered an Obstruction.

9. COURSES

- 9.1. SI Addendum C show(s) the course(s), including the approximate angles between legs, the order in which marks are to be passed, and the side on which each mark is to be left.
- 9.2. If at a gate mark, only one mark is present, that mark shall be left to port.

10. MARKS

- 10.1. Rounding marks will be yellow tetrahedrons, if present the offset mark will be a red/orange ball.
- 10.2. New marks will be orange tetrahedrons
- 10.3. If a buoy is used as a mark at the start/finish line it will be a red/orange ball.

11. THE START

- 11.1. Races will be started using RRS 26.
- 11.2. The starting line is between a staff displaying an orange flag on the signal vessel and either - the course side of the port-end starting mark or a staff displaying an orange flag on the port-end starting vessel.
- 11.3. Boats whose warning signal has not been made shall avoid the starting area during the starting sequence for other races.
- 11.4. [NP] If any part of a boat's hull is on the course side of the starting line at her starting signal and she is identified, the race committee will attempt to hail her identity.
- 11.5. A boat that does not start within 4 minutes after her starting signal will be scored Did Not Start without a hearing. This changes RRS A5.1.

12. CHANGE OF THE NEXT LEG OF THE COURSE

- 12.1. To change the next leg of the course, the race committee may shift a mark up to 10 degrees, but otherwise will lay a new mark (or move the finishing line) and remove the original mark as soon as practicable.
- 12.2. If the change is to a windward mark with an offset, the offset mark may not be set.

13. THE FINISH

- 13.1. The finishing line is between a staff displaying an orange flag on the finishing vessel and the course side of the pin-end finishing mark.

14. TIME LIMITS [AND TARGET TIMES]

- 14.1. [NP] The Mark 1 Time Limit, Race Time Limit (see RRS 35), and the Finishing Window are shown in the table below.

Mark 1 Time Limit	Race Time Limit	Finishing Window
30 minutes	60 minutes	20 minutes

- 14.2. If no boat has passed the first mark within the Mark 1 Time Limit, the race will be abandoned.
- 14.3. The Finishing Window is the time for boats to finish after the first boat sails the course and finishes. Boats failing to finish within the Finishing Window, and not subsequently retiring, penalized or given redress, will be scored Did Not Finish (DNF). This changes RRS 35, A5.1, and A5.2.

16. HEARING REQUESTS

- 16.1. The protest time limit is 60 minutes after the race committee signal vessel docks. The time will be posted on the official notice board.
- 16.2. Hearing request forms are available from the race office and will be returned there.
- 16.3. A request for redress based on an incident identified in a scoring inquiry will meet the time limit if:
- (a) the scoring inquiry was submitted within the time limit specified in RRS 62.2.
-

- (b) the request for redress is delivered as soon as reasonably possible after being notified of the race committee's response to the scoring inquiry. The response by the race committee may be notified in writing or by email. This changes RRS 62.2.

16.4. Notices will be posted no later than 30 minutes after the protest time limit to inform competitors of hearings in which they are parties or named as witnesses.

16.5. A list of boats that have been penalized for breaking RRS 42 under Appendix P will be posted.

16.6. SI Addendum H, Championship Qualifier Hearing Reopening Procedures, will apply.

17. SCORING

17.1. One races is required to be completed to constitute a regatta.

17.2. A boat's series score is:

- (a) when fewer than 5 races have been completed, the total of her race scores;
- (b) when 5 or more races have been completed, the total of her race scores excluding her worst score.

17.3. To request a correction of an alleged error in posted race or series results, a boat may complete and submit a scoring inquiry available online or from the race office. See also SI 16.3.

18. REPLACEMENT OF CREW OR EQUIPMENT

18.1. [DP] Substitution of competitors is only permitted in accordance with the championship conditions.

18.2. [DP] Substitution of damaged or lost equipment is not allowed unless authorized in writing by the OA. Requests for substitution shall be made to the OA at the first reasonable opportunity, which may be after the race.

19. COACHING AND SUPPORT BOATS

19.1. See the notice of race.

20. TRASH DISPOSAL

20.1. Trash may be placed aboard any race or protest committee vessel.

21. PRIZES

21.1. Prizes and qualifications will be in accordance with the notice of race and championship conditions.

SI Addendum B - HANDLING OF BOATS

B1 [DP] GENERAL

- B1.1 Each skipper is responsible for the damage or loss to their boat unless responsibility is otherwise assigned by the umpires or the jury.
- B1.2 Any request to alter, in any way, the equipment on a boat shall be in writing and worded to permit a yes/no answer.
- B1.5 The crew sailing the boat shall report any loss of provided equipment, damage, or other problem with the boat to the race committee as soon as practicable after finishing, and to bosun during on-water boat swaps or ashore after the last race for the boat each day.

B2 [DP] SUPPLIED EQUIPMENT

- B2.1 Boats will be provided for all competitors, who shall not modify them or cause them to be modified in any way except as permitted in this attachment.
- B2.2 While all reasonable steps are taken to equalize the boats, variations will not be grounds for redress. This changes RRS 61.4(a)(1).
- B2.3 All equipment provided with the boat for sailing purposes shall be in the boat while afloat.

B3 [DP] MANDATORY ACTIONS

- B3.1 Boats shall obey speed restrictions and navigation marks, while leaving or returning to the berth or mooring.
- B3.2 At the end of each sailing day, competitors shall:
 - (a) roll (or fold), bag, and stow all sails
 - (b) leave the boat in the same state of cleanliness as when first boarded that day
 - (c) release backstay tension
 - (d) remove all tape and trash, cover with companionway hatch and door

B4 [DP] PROHIBITED ACTIONS

- B4.1 An action listed in B4 is prohibited unless it is a permitted action listed in B5.
- B4.2 Any additions, omissions or alterations to the equipment supplied.
- B4.3 The use of any equipment for a purpose other than that intended or specifically permitted.
- B4.4 The replacement or removal of any equipment without the permission of the race committee.
- B4.5 Sailing the boat in a manner that it is reasonable to predict that damage would result.
- B4.6 Moving equipment from its normal stowage position except when being used.
- B4.7 Boarding a boat without prior permission.
- B4.8 Taking a boat from its berth or mooring without having paid the required damage deposit or having permission from the race committee, or, on race days, while flag AP is displayed ashore.
- B4.10 Heeling a boat using the mast or shrouds to clean the hull.
- B4.11 The use of electronic or navigation equipment.
- B4.12 Using the spinnaker pole to wing out the foresail.
- B4.13 Adjusting or altering the tension of standing rigging, other than the rope line to adjust the backstay.
- B4.14 Changing the number of purchases of running rigging.
- B4.15 Use of duct or gaffing tape. Use of rigging tape or plastic tape is permitted provided it does not leave a residue.
- B4.16 Marking directly on the hull, deck, sails, or lines. Rigging or plastic tape may be used to mark control lines or the deck. Marking pens may be used on tape.
- B4.17 Attaching lines to the fabric of spinnakers.
- B4.18 Perforating sails or modifying the sails in any way.
- B4.19 Using a winch to adjust the mainsheet, backstay, or vang.
- B4.20 Roll tacking and gybing - Crew shall not use the mast, or shrouds (including any inner shrouds) above the lower bottle screw (turnbuckle) to facilitate tacking or gybing, or to aid the projection of a crew member outboard.

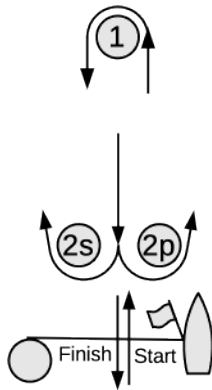
B5 PERMITTED ACTIONS

- B5.1 An action listed in B5 is permitted, even if it conflicts with a prohibited action listed in B4.
 - B5.2 The following equipment may be brought aboard by competitors:
 - (a) rigging or plastic tape (but not duct or gaffing tape)
 - (b) marking pens
 - (c) tell-tale material (not to be put on sails)
 - (d) handheld compasses, watches, timers, and small personal video devices such as GoPro
-

- B5.3 Competitors may use the equipment in B5.2 to:
- (a) attach tell tales (but not to sails)
 - (b) mark control settings with tape or by marking on tape only
 - (c) make minor repairs and permitted adjustments
-

SI Addendum C - Courses

Windward/Leeward, Leeward Finish



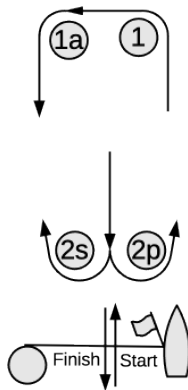
Signal Mark Rounding Order

L2 Start - 1 - 2s/2p - 1 - Finish

L3 Start - 1 - 2s/2p - 1 - 2s/2p - 1 - Finish

L4 Start - 1 - 2s/2p - 1 - 2s/2p - 1 - 2s/2p - 1 - Finish

Windward/Leeward with Offset Mark, Leeward Finish



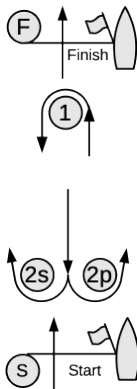
Signal Mark Rounding Order

LA2 Start - 1 - 1a - 2s/2p - 1 - 1a - Finish

LA3 Start - 1 - 1a - 2s/2p - 1 - 1a - 2s/2p - 1 - 1a - Finish

LA4 Start - 1 - 1a - 2s/2p - 1 - 1a - 2s/2p - 1 - 1a - 2s/2p - 1 - 1a - Finish

Windward/Leeward, Windward Finish



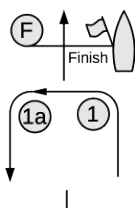
Signal Mark Rounding Order

W2 Start - 1 - 2s/2p - Finish

W3 Start - 1 - 2s/2p - 1 - 2s/2p - Finish

W4 Start - 1 - 2s/2p - 1 - 2s/2p - 1 - 2s/2p - Finish

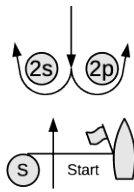
Windward/Leeward with Offset Mark, Windward Finish



Signal Mark Rounding Order

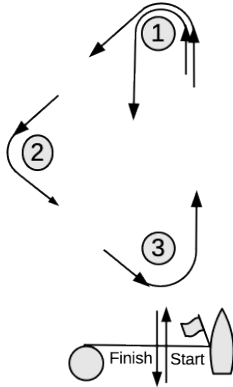
WA2 Start - 1 - 1a - 2s/2p - Finish

WA3 Start - 1 - 1a - 2s/2p - 1 - 1a - 2s/2p - Finish



WA4 Start - 1 - 1a - 2s/2p - 1 - 1a - 2s/2p - 1 - 1a - 2s/2p - Finish

Triangle, Leeward Finish



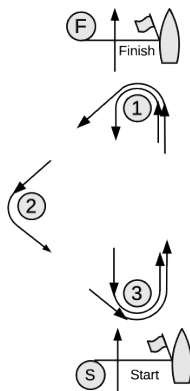
Signal Mark Rounding Order

TL2 Start - 1 - 2 - 3 - 1 - Finish

TL3 Start - 1 - 2 - 3 - 1 - 3 - 1 - Finish

TL4 Start - 1 - 2 - 3 - 1 - 3 - 1 - 3 - 1 - Finish

Triangle, Windward Finish



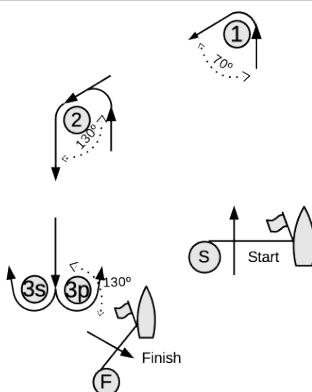
Signal Mark Rounding Order

TW2 Start - 1 - 2 - 3 - Finish

TW3 Start - 1 - 2 - 3 - 1 - 3 - Finish

TW4 Start - 1 - 2 - 3 - 1 - 3 - 1 - 3 - Finish

Outer Trapezoid



Signal Mark Rounding Order

O1 Start - 1 - 2 - 3p - Finish

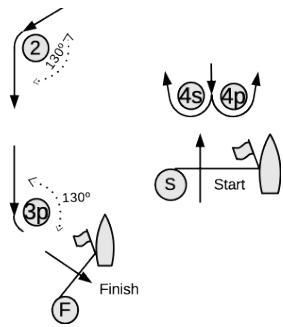
O2 Start - 1 - 2 - 3s/3p - 2 - 3p - Finish

O3 Start - 1 - 2 - 3s/3p - 2 - 3s/3p - 2 - 3p - Finish

Inner Trapezoid



Signal Mark Rounding Order

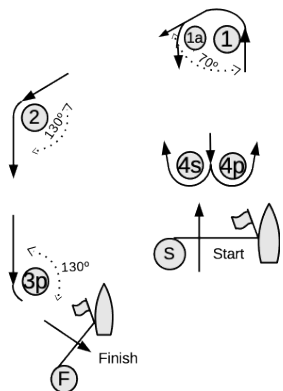


I1 Start - 1 - 2 -3p - Finish

I2 Start - 1 - 4s/4p - 1 - 2 -3p - Finish

I3 Start - 1 - 4s/4p - 1 - 4s/4p - 1 - 2 -3p - Finish

Inner Trapezoid with Offset Mark



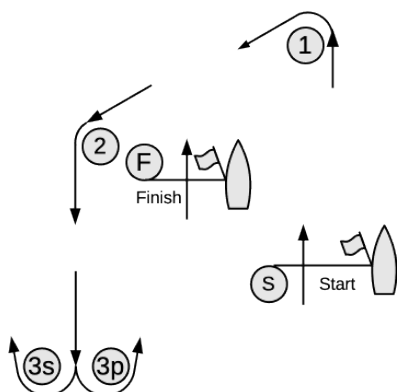
Signal Mark Rounding Order

IA1 Start - 1 - 1a - 2 -3p - Finish

IA2 Start - 1 - 1a - 4s/4p - 1 - 2 -3p - Finish

IA3 Start - 1 - 1a - 4s/4p - 1 - 1a - 4s/4p - 1 - 2 -3p - Finish

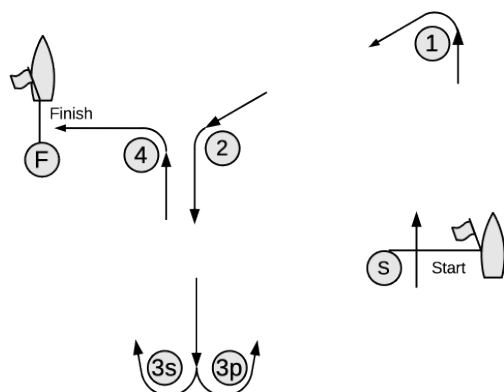
Opti Trapezoid Upwind Finish



Signal Mark Rounding Order

OT Start - 1 -2 - 3s/3p - Finish

Opti Trapezoid Reaching Finish



Signal Mark Rounding Order

OR Start - 1 -2 - 3s/3p - 4 - Finish

SI Addendum H - Championship Qualifier Hearing Reopening Procedures

This addendum shall be included in Sailing Instructions for qualifying events for US Sailing Championships where the right to appeal is being denied, but the initial event protest committee does not meet the US Sailing requirements for a No-Appeal Event. It provides a process for re-opening a hearing with a protest committee that does meet the requirements for a No-Appeal Event.

H1 Under RRS 70.3(b), there shall be no appeal of the decision of a protest or request for redress. However, a decision following a hearing under RRS 69.2 may be appealed.

H2 Email and phone contact information for the following persons shall be available from the OA by request at all times during the event:

- (a) the helm of each boat entered
- (b) the protest committee members
- (c) the principal race officer
- (d) US Sailing representative

H3 RRS 63.6(b) is replaced with (time requirements in bold):

63.6(b) If requested by a party in writing that is hand-delivered to a member of the protest committee no later than **the protest time limit on the last day of racing or one hour after being informed of the decision, whichever is later**, the protest committee will hand-deliver the above information in writing **within two hours**. The protest committee may, if it considers it relevant to do so, prepare or endorse a diagram.

H4 RRS 63.7 is replaced with:

63.7 Reopening a Hearing

- (a) The protest committee may reopen a hearing if it decides
 - (1) a party was unavoidably absent from the hearing,
 - (2) it may have made a significant error, or
 - (3) significant new evidence has become available within a reasonable time.

When a hearing is reopened under 63.7(a), a majority of the members of the protest committee shall be members of the original protest committee.

- (b) A party to the hearing or the protest committee may request a reopening **no later than 24 hours after the hearing or 24 hours after the protest time limit on the last day of racing, whichever is later**, by following the process described in 63.7(c).

- (c) US Sailing Championship Qualifier Reopened Hearing

- (1) The request for a US Sailing Championship Qualifier Reopened Hearing shall be made by delivering the request by email to the US Sailing Youth Competition Manager at youthchampionships@ussailing.org and the US Sailing Representative (see H2 above).
- (2) The request shall include:
 - (a) the reason for requesting a reopening
 - (b) copies of the original request for hearing
 - (c) the written decision (see H3 above) of the protest committee
 - (d) any new evidence that cannot be presented verbally
 - (e) e-mail and phone contact information for all parties to the hearing
 - (f) e-mail and phone contact information of the chair of the protest committee
- (3) The hearing shall be reopened when a request is made in accordance with 63.7(c)(1).
- (4) The protest committee shall consist of the chair of the original protest committee plus four judges appointed by US Sailing. A majority of the committee's members shall be US Sailing National or World Sailing International Judges. US Sailing will appoint the committee's chair.
- (5) The reopened hearing will be conducted by tele- or video- conference call in accordance with RRS 63.1 through 63.6. The time and date for the conference call shall be established by the chair as soon as practicable and no later than seven days after the request for reopening is emailed. The chair will email to the parties to the information in 63.7(c)(2), the time and date of the hearing, the process for joining the call and any other relevant documents.
- (6) The decision of the protest committee in the reopened hearing is final.

