



Commodores Cup U35 Invitational Regatta
Kelowna Yacht Club
August 15-17, 2025
Supplementary Sailing Instructions
(Numbering Corresponds to RRS Appendix S)

4 SIGNALS MADE ASHORE

- 4.1 Signals made ashore will be displayed from a flagpole situated on the western edge of the Commodore's Dock. When flag AP is displayed ashore, '1 minute' is replaced with 'not less than 30 minutes' in Race Signals AP.

5 SCHEDULE OF RACES

Saturday August 16, 2025	First Warning Signal Latest Warning Signal	11 a.m. PDT 4 p.m. PDT
Sunday August 17, 2025	First Warning Signal Latest Warning Signal	10:30 a.m. PDT 2:30 p.m. PDT

6 CLASS FLAGS

U35 Fleet	NUMERAL PENNANT 1
Coached U35 Fleet	NUMERAL PENNANT 2

7 THE COURSES

7.2 Addendum A Course Diagram

- 7.3 Legs of the course will not be changed after the preparatory signal. This changes RRS 33.

8 MARKS

8.1 Addendum B *Mark Coordinates*.

9 THE START

9.2 The starting line will be between a staff displaying an orange flag on the signal vessel and the course side of a **green starting mark**

9.3 DP][NP] Boats whose warning signal has not been made shall avoid the starting area during the starting sequence for other races

9.4 The Start line is to be considered an obstruction and shall not be crossed unless a boat is starting or within her start sequence

9.5 A boat starting later than 4 minutes after her starting signal will be scored Did Not Start without a hearing. This changes RRS A5.1 and A5.2.

11 THE FINISH

11.1 The finishing line will be between a staff displaying a blue flag mounted on the signal vessel and the course side of a **red finishing mark**

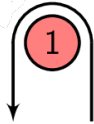
12 TIME LIMITS

RACE TIME LIMIT	90 Minutes
-----------------	------------

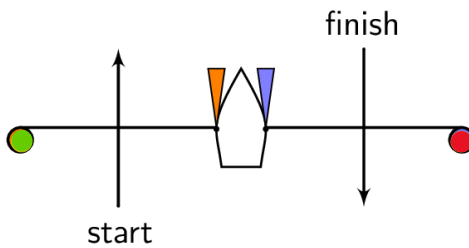
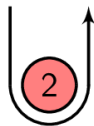


APPENDIX A

COURSE DIAGRAM



wind



Signal Mark rounding order

L1 Start-1-Finish

L2 Start-1-2-1-Finish

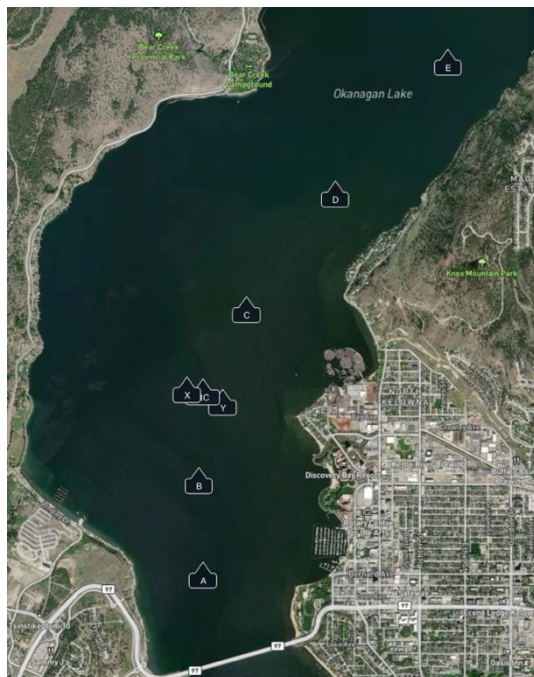
L3 Start-1-2-1-2-1-Finish

North Wind - 1 (D Mark), 2 (C Mark)

South Wind - 1 (A Mark), 2 (B Mark)

APPENDIX B

KELOWNA YACHT CLUB MARK COORDINATES



MARK (South to North)	COORDINATES D°MM.mm
A (1)	49°53.22N 119°31.04W
B (2)	49°53.71N 119°30.97W
X	49°54.15N 119°31.06W
RC	49°54.17N 119°30.92W
Y	49°54.08N 119°30.80W
C (2)	49°54.55N 119°30.59W
D (1)	49°55.09N 119°29.91W
E	49°55.75N 119°29.14W