



77th Annual Labor Day Regatta

C420/ILCA 4,6,7/OPTI RWB SAILING INSTRUCTIONS

August 30-31st 2025

ILCA/C420 Course VHF Channel 71

RWB Course VHF Channel 5



1. RULES

- 1.1. The regatta will be governed by the rules as defined in *The Racing Rules of Sailing*.
- 1.2. The notation "[NP]" in a rule in the Notice of Race and these Sailing Instructions (SIs) means that a boat may not protest another boat for breaking that rule.
- 1.3. The notation "[DP]" in a rule in these SIs means that a discretionary penalty may be applied by the protest committee.
- 1.4. Under RRS 87, the one-design class rules for all boats shall apply except as follows: [DP] The sail number and hull number need not match. Sail numbers shall be visible on the mainsail, easy to read and non-overlapping. Numbers are not required on spinnakers or headsails.

2. NOTICES TO COMPETITORS

- 2.1. Notices to competitors will be posted on the official notice board located at the Squadron Pavilion. Anything posted on Regatta Network is for courtesy only.

3. CHANGES TO SAILING INSTRUCTIONS

- 3.1. Any change to the sailing instructions will be posted before 0900 on the day it will take effect, except that any change to the schedule of races will be posted by 1800 on the day before it will take effect.

4. SIGNALS MADE ASHORE

- 4.1. Signals made ashore will be displayed from the Squadron flagpole.
- 4.2. When flag AP is displayed ashore, '1 minute' is replaced with 'not less than 40 minutes' in the race signal AP. This changes Race Signals

5. SCHEDULE OF RACES

- 5.1. Races are scheduled as follows:

Saturday, August 30, 2025	0800 - 0900	Check-in
	930	Competitors' Meeting
	1030	First Scheduled Warning Signal for ILCA-C420-RWB
Sunday, August 31, 2025	0930	First Scheduled Warning Signal for ILCA-C420-RWB
	1400	No Warning Signal after this time

- 5.2. On the last scheduled day of racing, awards to follow after racing.

6. CLASS FLAGS

Class flags are as follows:

Class C420 Class Flag - Blue Logo on White Background

Class ILCA 6 Class Flag - Red ILCA Logo with Green Background

Class ILCA 4 Class Flag - Red ILCA Logo on Yellow Background

Class ILCA 7 Class Flag - Red ILCA Logo with white Background

Class RWB-White flag with OPTI Logo

7. THE COURSE

7.1. The course diagrams are on the pages following SI 15. They show the courses, the order in which marks are to be passed, and the side on which each mark is to be left.

8. MARKS-SEE ADEMUM B

9. THE START

9.1. Races will be started by using RRS 26.

9.2. The starting line will be between a staff displaying an orange flag on the Signal boat and the course side of the starting mark.

9.3. A boat that does not start within 4 minutes after her starting signal will be scored Did Not Start without a hearing. This changes RRS 35, A4 and A5.

10. CHANGE THE NEXT LEG OF THE COURSE

10.1. To change the next leg of the course, the RC may lay a new mark (or move the finishing line) and remove the old marks as soon as practicable.

10.2. If the change is to a windward mark with an offset, the offset mark may not be set.

11. THE FINISH

11.1. The finish line will be between a staff displaying an orange flag on the Signal boat and the course side of the finishing mark. This changes Race Signals.

12. TIME LIMITS

12.1. [NP] The Mark 1 Time Limit, Race Time Limit (see RRS 35), and the Finishing Window are shown in the table below.

Mark 1 Time Limit	Race Time Limit	Finishing Window
20 minutes	60 minutes	20 minutes

12.2. The race will be abandoned if no boat has passed the first mark within the Mark 1 Time Limit.

12.3. The Finishing Window is the time for boats to finish after the first boat sails the course and finishes. Boats failing to finish within the Finishing Window, and not subsequently retiring, penalized or given redress, will be scored Time Limit Expired (TLE) without a hearing. A boat scored TLE shall be scored points for the finishing place one more than the points scored by the last boat that finished within the Finishing Window, and raced the course, was not subsequently retiring or, penalized. This changes RRS 35, A5.1, A5.2 and A10.

13. PENALTY SYSTEMS for RWB ONLY-SEE ADENDUM B

14. PROTESTS AND REQUESTS FOR REDRESS

- 14.1.** Hearing request forms are available at the race office. Protests and requests for redress or reopening a hearing shall be delivered to the protest committee within the protest time limit.
- 14.2.** For each race area, the protest time limit is 60 minutes after that fleet's Signal Boat docks or the race committee signals no more racing today ashore, whichever is later.
- 14.3.** For a request for redress pertaining to incidents in the racing area, the time limit will be the protest time limit.
- 14.4.** The schedule of hearings will be posted no later than 10 minutes after the protest time limit to inform competitors of hearings in which they are parties or named as witnesses and where the hearings will be held. If all parties are available and prepared for a hearing, the protest committee may schedule a hearing before the end of the protest period.
- 14.5.** Notices of protests by the race committee, technical committee or protest committee will be posted to inform boats under RRS 60.1 and 63.
- 14.6.** A request for redress based on a protest committee decision on the last day of sailing shall be delivered no later than 30 minutes after the decision was posted.

15. SCORING

- 15.1.** The Low Point System of Appendix A will apply.
- 15.2.** When fewer than six (6) races have been completed, a boat's series score will be the total of her race scores.
- 15.3.** When six (6) or more races have been completed, a boat's series score will be the total of her race scores excluding her worst excludable score.

16. SAFETY REGULATIONS

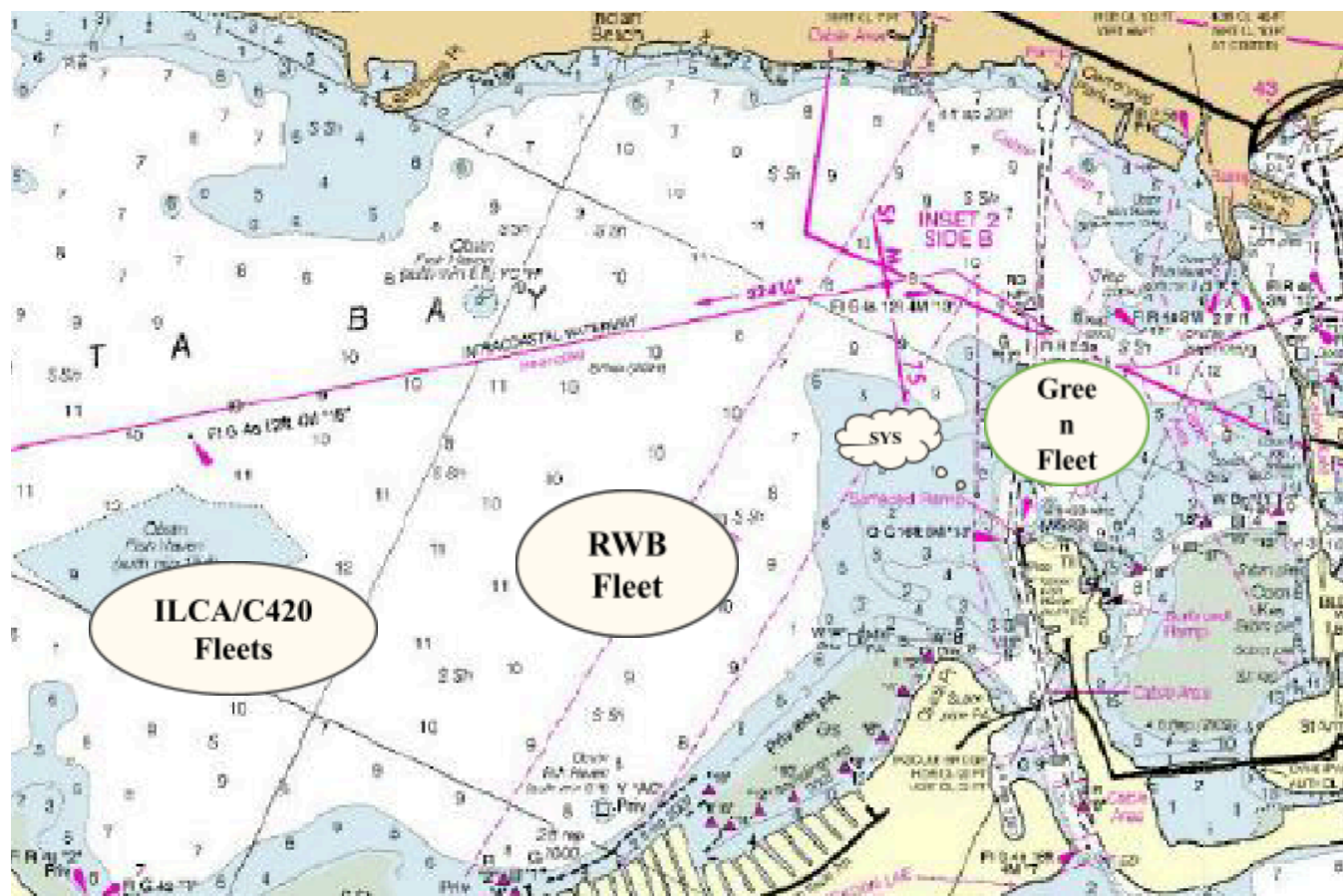
- 16.1.** Boats are to check in with the Signal Boat before the initial warning signal of the first race of each day by sailing near the Signal Boat's stern on a starboard tack and hailing your sail number until acknowledged by the Signal Boat. Failure to check in may result in a penalty. [DP]
- 16.2.** A boat retiring from the race shall notify a Race Committee vessel before leaving the course, or, when that is not possible, notify the Race Office immediately upon arriving ashore. [DP]

17. SUPPORT BOATS [DP]

- 17.1.** Team leaders, coaches, and other support persons shall stay outside areas where boats are racing from the time of the warning signal for the first class to start until all boats have finished or retired or the race committee signals postponement or abandonment.
- 17.2.** All support boats equipped with an emergency cutoff switch, the operator **MUST** always wear the associated lanyard when in the vicinity of competitors, the sailing area, and the Squadron.
- 17.3.** All coach boats and other support boats shall come to the aid of any competitor in distress or requesting assistance.
- 17.4.** All support boats shall comply with US Coast Guard regulations.

- 18. PRIZES** Prizes will be given to the top 3 finishers of each class.

RACING AREA:



ADENDUM A

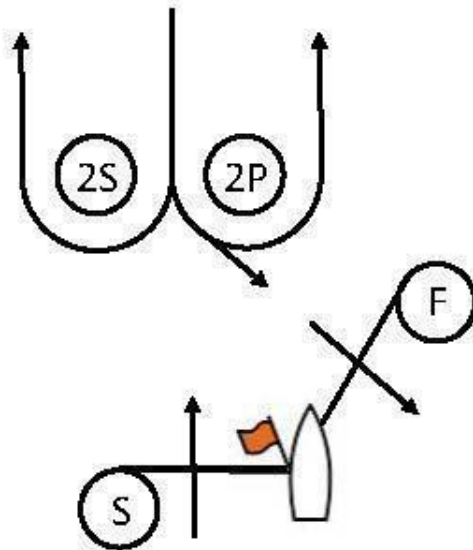
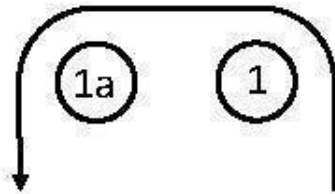
COURSE DIAGRAMS

COURSE DIAGRAMS for ILCA-C420-RWB

Windward-Leeward Course Diagram, Reaching Finish

Course WL – Windward/Leeward, Reaching Finish
Mark Rounding Order Start – 1 – 1a – 2P – Finish

Course WL2 – Windward/Leeward, Reaching Finish
Mark Rounding Order: Start – 1 – 1a – 2S/2P – 1 – 1a – 2P - Finish



ADENDUM B

COURSE MARKS

ILCA/C420

- Rounding marks will be orange inflatable tetrahedrons (except for ILCA 4 windward mark)
- Windward offset mark will be a small ball-type mark.
- ILCA 4s will have a shorter windward leg. The weather mark will be a red tetrahedron with a small ball-type mark for the offset.
- New marks will be green inflatable tetrahedrons. When there is a subsequent mark change, the original mark will be used.
- The start mark will be an orange inflatable tetrahedron.
- The finish mark will be a small ball-type mark.

RED-WHITE-BLUE OPTIMUS

- Original rounding marks will be yellow inflatable tetrahedrons.
- The start mark will be an orange inflatable tetrahedron.
- The weather offset mark will be a small ball-type mark.
- New marks will be green inflatable tetrahedrons. There will be no offset mark with the new weather mark. When there is a subsequent mark change, the original mark will be used.
- The finish mark will be a small ball-type mark.

PENALTY SYSTEMS-RWB ONLY

PENALTY SYSTEMS apply to the RWB Fleet ONLY:

- RRS Appendix P, as revised below, shall apply.
 - P2.2, “Second Penalty” title is changed to: “Second and Subsequent Penalties.”
 - The first sentence of P2.2 is changed to: When a boat is penalized a second time and subsequent times, her penalty shall be a Two-Turn Penalty as described in rule 44.2, unless the penalty is signaled after the boat finishes, in which case the boat shall promptly notify the race committee that she is retiring.
 - P2.3 is deleted.
- In an incident while racing, except in the *zone*, a boat may take a One-turn Penalty when she may have broken one or more rules of Part 2 or rule 31. This changes RRS 44.1.