

# Vineyard Haven Yacht Club

## 2025 420 Junior Regatta Sailing Instructions **as amended**



### 1. RULES

The event will be governed by the rules as defined in The Racing Rules of Sailing (RRS) 2025-2028. In the event of a conflict between the Sailing Instructions and the Notice of Race (NOR), the Sailing Instructions shall prevail.

### 2. NOTICES TO COMPETITORS

All notices to competitors will be posted on the Official Notice Board located on the deck at Vineyard Haven Yacht Club ("VHYC").

### 3. CHANGES TO SAILING INSTRUCTIONS

Any change to the Sailing Instructions will be posted before 1000 on the day it will take effect, except that any change to the schedule of races will be posted before 1800 on the day before it will take effect.

### 4. SIGNALS MADE ASHORE

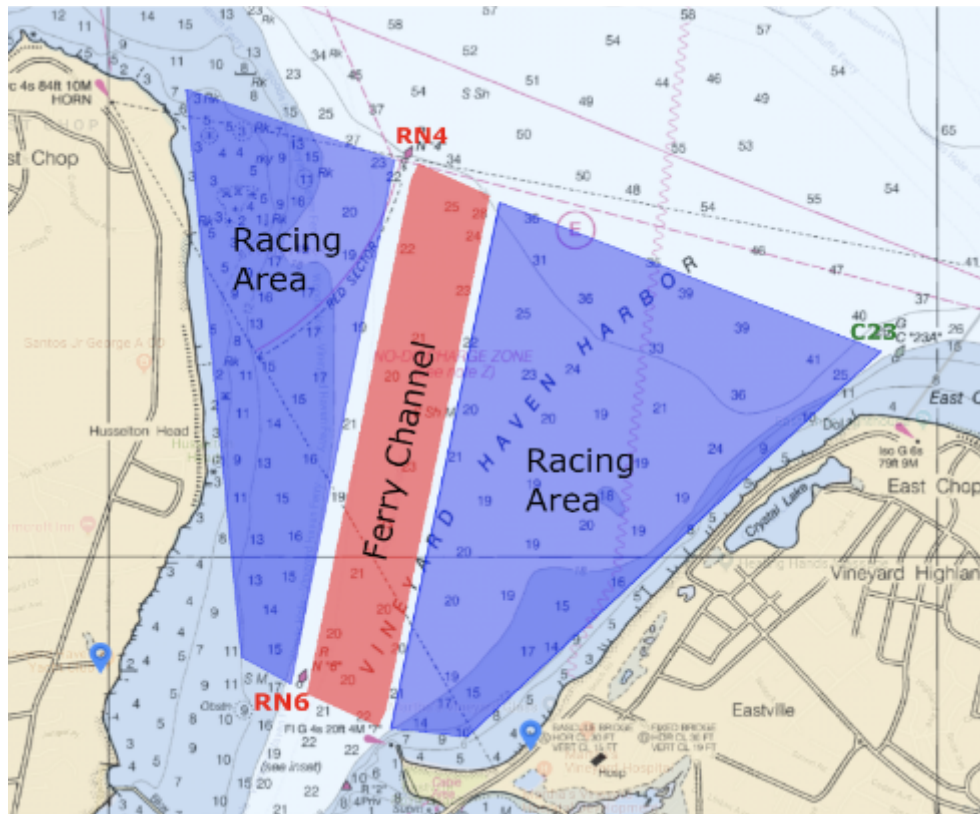
Signals made ashore will be displayed from a flag staff located on the dock in front of VHYC. When the pennant "AP" is displayed ashore, the warning signal for the next race will be made no less than 60 minutes after AP is lowered. This changes **RRS** Race Signals.

### 5. CLASS FLAG

The class flag will be a 420 on white background.

### 6. GENERAL RACING AREA

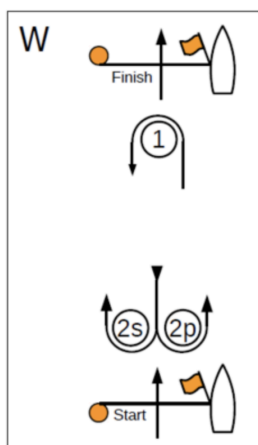
The general racing area and approximate ferry channel is as shown in the diagram below, however, the Race Committee shall not be limited to the noted "Racing Areas" and may set a course with marks outside this area in its discretion. VHYC does not control or have influence on Ferry or commercial traffic schedules or courses in the harbor, please note #18 below for channel definition and use.



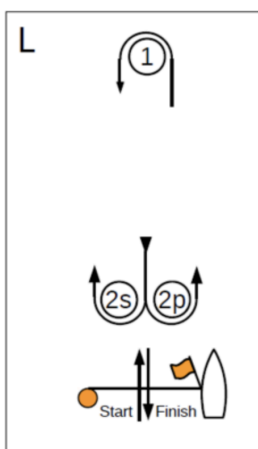
## 7. COURSES

The Race Committee Signal Boat will display the course, no later than the warning signal for each race. Diagrams of the courses will be posted on the Official Notice Board.

If one of the gate marks is missing, the remaining mark in position shall be rounded to Port.



Course W – Windward/Leeward, Windward Finish	
Signal	Mark Rounding Order
W2	Start – 1 – 2s/2p – Finish
W3	Start – 1 – 2s/2p – 1 – 2s/2p – Finish
W4	Start – 1 – 2s/2p – 1 – 2s/2p – 1 – 2s/2p – Finish



Course L – Windward/Leeward, Leeward Finish	
Signal	Mark Rounding Order
L2	Start – 1 – 2s/2p – 1 – Finish
L3	Start – 1 – 2s/2p – 1 – 2s/2p – 1 – Finish
L4	Start – 1 – 2s/2p – 1 – 2s/2p – 1 – 2s/2p – 1 – Finish

## 8. MARKS

Marks will be yellow or orange inflatable buoys.

## 9. MANDATORY CHECK IN

Each competitor will check in with the Race Committee Signal Boat by sailing past her stern on starboard tack prior to the warning signal for the first race of each day. Failure to check in may result in disqualification at the Race Committee's discretion. This changes RRS Rule 60.5 and A5.1.

## 10. THE START

Races will be started in accordance with RRS Rule 26. The starting line will be between the staff displaying an orange flag on the Race Committee Signal Boat on one end and either a pin boat with an orange flag or a yellow or orange inflatable buoy on the other end.

## 11. CHANGING THE COURSE AFTER THE START

Changes to the course will be made in accordance with RRS Rule 33, however, the Race Committee may adjust the course up to 10 degrees in bearing or 0.1nm in length without signaling a change. This changes RRS Rule 33.

## 12. THE FINISH

The finish line will be between the staff displaying a blue flag on board the Race Committee Signal Boat on one end and a yellow or orange inflatable buoy or motor boat with an orange flag on the other end.

## 13. PENALTY SYSTEM

RRS Rule 44.1, shall apply.

#### 14. TIME LIMITS

Boats failing to finish within 15 minutes after the first boat sails the course and finishes, and not subsequently retiring, penalized or given redress, will be scored Did Not Finish without a hearing. This changes RRS Rule 35, A4 and A5.

#### 15. PROTEST AND REQUESTS FOR REDRESS

Boats intending to protest an incident occurring in the racing area shall notify the race Committee finishing boat immediately after finishing or retiring, and before communicating with any support persons. Failure to do so will make the protest invalid. This changes RRS Rule 60.4.

Protest forms are available at the VHYC Office. Protest forms must be completed and filed at the VHYC Office within the protest time limit.

The protest time limit is 60 minutes after the Race Committee docks at VHYC after the last race of the day. The same protest time limit applies to all protests by the Race Committee and requests for redress. This changes RRS Rule 60.2. Notices will be posted as soon as possible after the end of the protest time limit to inform competitors of hearings they are in or named as witnesses. Hearings will be scheduled at the time specified in a notice on the Official Notice Board and held on the 2<sup>nd</sup> floor of VHYC. This constitutes notice as prescribed by RRS Rule 63.1.

Notices of protests by the Race Committee will be posted on the Official Notice Board to inform boats in accordance with RRS Rule 60.2(d).

#### 16. SCORING

The low point scoring system of Appendix A in the RRS Rules will apply.

Three races are required to be completed to constitute a series.

When fewer than 5 races have been completed, a boat's series score will be the total of her race scores.

When 5 to 9 races have been completed, a boat's series scores will be the total of her race scores excluding her worst score. When 10 or more races have been completed, a boat's series score will be the total of her race scores excluding her two worst scores. This changes RRS Rule A2.1.

#### 17. SAFETY REGULATIONS

RRS Rule 40.1 shall apply.

A boat that retires from a race shall notify the Race Committee as soon as possible.

Boats not leaving the beach for the day's races shall inform the Race Committee.

When the Code Flag V (a red X on a white background) is displayed on the Race Committee Signal Boat, coach boats and support boats shall assist the Race Committee and act as safety boats.

#### 18. VIOLATION OF "FERRY CHANNEL"

A racing boat that causes any Steamship Authority vessel, or any other large commercial vessel, south of a line at the mouth of the harbor drawn from Mark RN 4 to Mark RN 6 to: alter course, slow down or back down, or that passes in front of any such vessel and does not yield them right of way, or, in the judgment of the Race Committee, passes too close to a vessel in this area, shall be disqualified from the Regatta without a hearing. This changes RRS Rule 60.5.

#### 19. REPLACEMENT OF CREW OR EQUIPMENT

After the first race of the Regatta, substitution of competitors will not be allowed without prior written approval of the Race Committee.

After the first race of the Regatta, substitution of damaged or lost equipment will not be allowed unless approved by the Race Committee. Requests for substitution shall be made to the Race Committee at the first reasonable opportunity.

## **20. SUPPORT AND COACH BOATS**

Except in the instance of a boat in distress and requiring assistance, all support or coach boats shall remain outside the course and at least 100 yards from any boat racing from the time of the warning signal until all boats have finished or the Race Committee signals a postponement, general recall or abandonment. The penalty for infringing these requirements will be at the discretion of the Race Committee but may include disqualification of one or all boats associated with the infringing coach or support boat. This changes RRS Rule 60.5.

## **21. TROPHIES AND PRIZES**

Prizes will be awarded to first, second and third place in the regatta.

## **22. TRASH DISPOSAL**

A boat shall not discharge trash in the water. Trash may be deposited on support boats and the Race Committee Signal Boat.

## **23. RADIO COMMUNICATIONS**

No transmitting equipment or radio receivers shall be carried on board any competing boat. This restriction also applies to mobile telephones.

The Race Committee will be using channel 73. All coach, support, and spectator boats should monitor channel 73 in case communication with the committee is necessary. The VHYC Base will monitor channel 72.

## **24. DECISION TO RACE**

Competitors participate in the regatta entirely at their own risk. See RRS Rule 3, Decision to Race. VHYC will not accept any liability for material damage or personal injury or death sustained in conjunction with or prior to, during, or after the regatta. Attention is also drawn to RRS Rule 46.