



# RIVER ROMP 2025 SAILING INSTRUCTIONS

October 18-19, 2025



**ORGANIZING AUTHORITY (OA)**

**Edison Sailing Center**

**River Romp supports Clean Regatta practices under Sailors for the Sea**

*The notation "[NP]" in a rule in these Sailing Instructions means that a boat may not protest another boat for breaking that rule. This changes RRS 60.1(a).*

## 1. RULES

- 1.1. The regatta will be governed by the rules as defined in the current *Racing Rules of Sailing (RRS)*.
- 1.2. [DP]Participants shall abide by all local, state, and federal health and safety guidelines in effect during the days of the event.

2. **CHANGES TO SAILING INSTRUCTIONS** will be posted on the Official Notice Board before 0900 on Saturday for Saturday races and before 0730 on Sunday for Sunday races except that any change in the schedule of races will be posted by 1800 on the day before the schedule change will take effect.

## 3. COMMUNICATIONS WITH COMPETITORS

- 3.1. All notices to the competitors will be posted on the Official Notice Board. The Official Notice Board can be found at: <https://www.regattanetwork.com/event/30169>.
- 3.2. No competitor boats shall carry onboard any communication devices including, but not limited to, VHF radios, pagers and cell phones.
- 3.3. Coach and support boats shall carry functional VHF radios and cell phones for communications with the Race Committee (RC) and Organizing Authority (OA). See especially RRS 37.
- 3.4. Radio channels for race areas are as follows: Area A: VHF 78; Area B: VHF 68; Area C: VHF 72.

4. **SIGNALS MADE ASHORE** will be displayed from the flagpole located near the shelter. If a postponement is signaled ashore (Code Flag AP and two sounds), the warning signal will be made not less than 30 minutes after Code Flag AP is lowered with one sound. This changes Race-Signals AP.

## 5. SCHEDULE

### FRIDAY, October 17, 2025

- 1630 Club and Coach on-site check-in opens.
- 1700 **Deadline for filing sail numbers.**
- 1830 Check-in closes for the day.

### SATURDAY, October 18, 2025

- 0745 Club and Coach on-site check-in opens.
- 0859 Check-in closes for the event.
- 1030 Intended warning signal for first race of the day for Race Area B, (Opti Red-White-Blue) and Race Area C (C420, Non-spinnaker 420, ICLA 6 and ICLA 4).
- 1100 Intended warning signal for first race of the day for Race Area A, Opti Green Fleet.
- 1700 No first warning for a race will be made after this time. This allows a warning signal for restarts to occur after this time.

### SUNDAY, October 19, 2025

- 0900 Intended warning signal for first race of day for all Race Areas.
- 1300 No first warning for a race will be made after this time. This allows a warning signal for restarts to occur after this time.

*Awards will be presented as soon as possible after the completion of Sunday's races and the completion of protest/redress hearings that might affect the outcome of the top finishers.*

## **6. NUMBER OF RACES**

- 6.1. It is the intention of the OA and RC to run as many races as practicable.
- 6.2. Code Flag A displayed with no sound, while boats are finishing, means “No more racing today”.

## **7. RACING AREA, CLASSES, DIVISIONS**

- 7.1. The races will be held on the Caloosahatchee River per the Race Area Chart as shown by these Sailing Instructions and as posted on the Official Notice Board.
- 7.2. The class(es) in each race area and the approximate distance from the north shore regatta site for each race area are as follows:
  - 7.2.1. Race Area A (Opti Green Fleet): One-half mile.
  - 7.2.2. Race Area B (Opti Red-White-Blue): Approximately 1½ miles.
  - 7.2.3. Race Area C (C420, Non-Spinnaker 420, ILCA 6 (Laser Radial) and ILCA (4.7)): 2 miles.
- 7.3. [DP] [NP] Colored streamers will be provided at check-in and shall be flown from the mast top at full length by the following classes:
  - 7.3.1. ILCA 6 (Laser Radial): Blue
  - 7.3.2. ILCA 4 (Laser 4.7): White
  - 7.3.3. Non-Spinnaker 420, Lime Green

## **8. STARTING AND CLASS FLAGS**

- 8.1. Starts will be signaled in accordance with RRS 26.
- 8.2. **Race Area A:** The Green Fleet class flag will be a colored IODA class flag.
- 8.3. **Race Area B:** Opti Red-White-Blue class flag will be the IODA class flag.
- 8.4. **Race Area C:** Class flags and intended start order for the first race of the regatta will be in the order indicated below. Intended start order for the first race on Sunday racing will be posted no later than 2000 on Saturday. Subsequent start sequences will be based on the respective class flag flown at the warning signal.
  - 8.4.1. C420: 420 Class Flag.
  - 8.4.2. ILCA 6 (Laser Radial): Blue Streamers.
  - 8.4.3. Non-Spinnaker 420: Lime Green Streamers.
  - 8.4.4. ILCA 4 (Laser 4.7): White Streamers.
- 8.5. A boat starting more than four minutes after her starting signal will be scored DNS (Did Not Start) without a hearing. This changes RRS 63.1, A4 and A5.1.
- 8.6. As a courtesy, the RC may make a series of short sound signals approximately one minute before the warning for the first of a series of starts.

## **9. COURSES**

- 9.1 The courses will be as shown and described in Addendum One.
- 9.2 For the Opti Green Fleet only, there will be a special “Race for Ice Cream”. The day and time will be determined by the Principal Race Officer of Race Area A. An ice cream cone flag will be displayed on the RC Signal Boat for this race to the shore, where the racers will receive ice cream.

## **10. DESCRIPTIONS of MARKS, START LINE, FINISH LINE**

- 10.1. Description of the Marks will be posted on the Official Notice Board before 0900 on Saturday.
- 10.2. Race Area A: The start/finish line will be between a mark on the port end and a staff flying an orange flag on the RC Signal Boat.
- 10.3. Race Areas B & C: The starting line will be between a staff flying an orange flag on a pin-end boat or the course side of a mark as described on the Official Notice Board and a staff flying an orange flag on the RC Signal Boat. The finishing line will be between the course side of a mark to windward of the bow of the RC Signal Boat and a staff flying a blue flag on the RC Signal Boat.

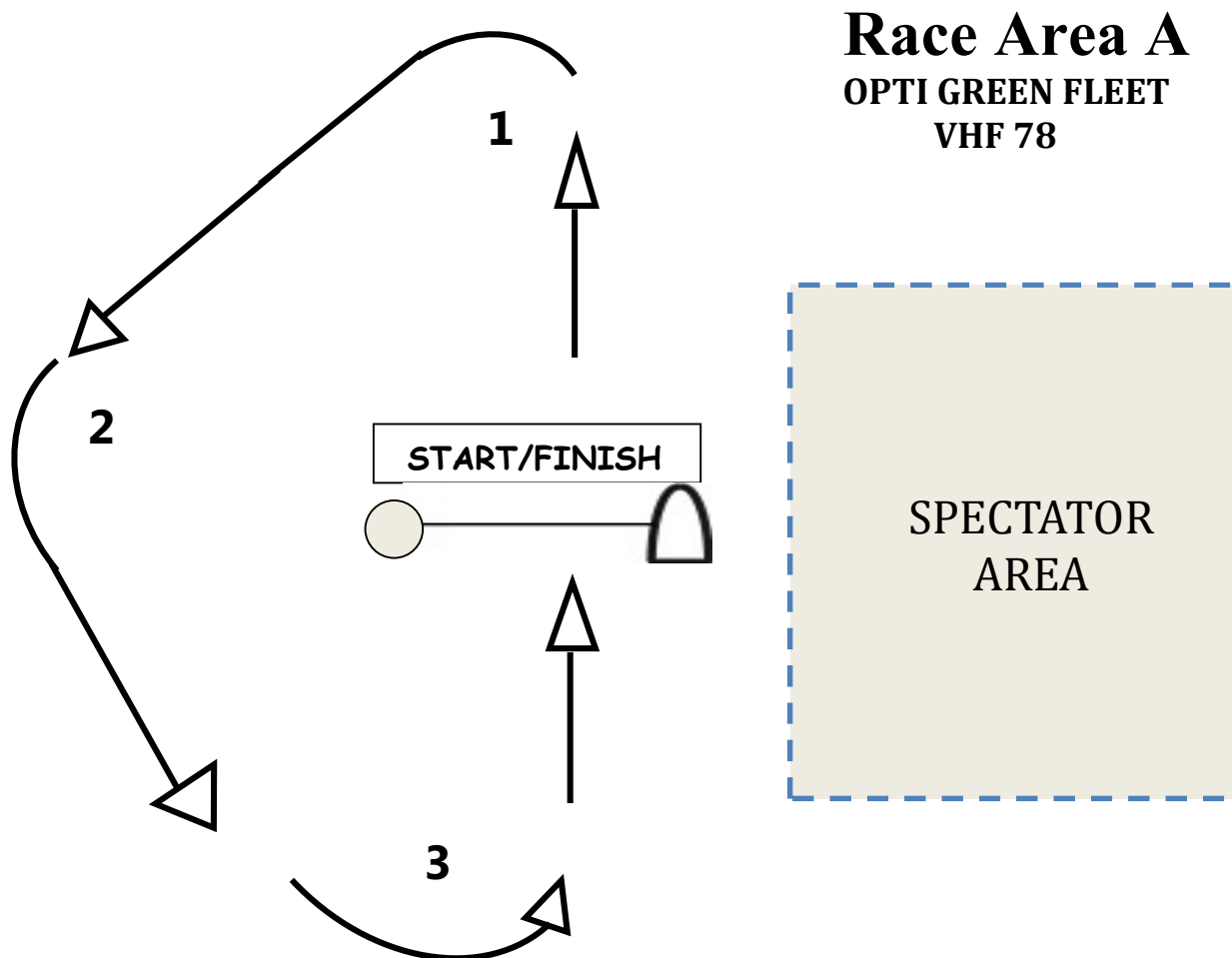
## **11. RESTRICTED AREAS**

- 11.1. [DP] Before a boat’s warning signal, each boat shall remain below the starting line and a minimum of 100’ from the starting line.
- 11.2. [DP] Upon finishing, boats shall immediately sail clear of the finishing area, stay clear of boats that have not finished and remain a minimum of 100’ from the finishing line.
- 11.3. [DP][NP] Spectator Boats shall remain anchored in the Spectator Area anytime the Orange Flag or Blue Flag is displayed.
- 11.4. [DP] On Race Areas B and C, Coach Boats displaying a registered flag may transit the race course provided they remain a minimum of 100 yds from any racing boat AND only transit the race area to the “right side” as viewed from the start area.

- 11.5. [DP] On Race Area A (Opti Green) coach boats shall not approach the leading 25% of the fleet but may coach the balance of the fleet. This changes RRS 41.
- 11.6. [DP] Coaches and Spectators in violation of these Rules may be protested as a Support Person with a penalty assigned to the related competitor(s).
- 12. RETIRE REQUIREMENTS [DP] [NP]** A boat that retires from a race or from racing for the day shall notify the Race Committee before leaving the race area. A boat retiring and returning to shore shall report to a race official designated for each launching area.
- 13. TIME LIMITS**
- 13.1. If no boat passes the first mark of the course within 15 minutes of her start, the race shall be abandoned.
- 13.2. If no boat sails the course and finishes within 60 minutes of her start, the race shall be abandoned.
- 13.3. Boats still racing ten (10) minutes after the first boat in her class finishes, and not thereafter retiring, being penalized or given redress will be scored TLE without a hearing. A boat scored TLE will be awarded two points more than the number of boats that did finish within the race time limit and complied with RRS 28, but will not be scored more than the score for DNF. This changes RRS 35, A4. A5 and A10.
- 14. REPORTS OF THE JURY AND ACTIONS OF THE RACE COMMITTEE**
- 14.1. No later than 15 minutes after the RC Signal Boat's dock time, the RC will post their actions related to boats scored DNC, DNS, OCS, NSC, UFD, ZFP, BFD, DNF and TLE and a list of those boats that failed to meet sail number requirements per NoR 4.4.
- 14.2. The Jury will post actions related to Appendix P as amended by SI 15.1. no later than 15 minutes after the RC dock time.
- 15. PENALTY SYSTEMS**
- 15.1. RRS Appendix P, as revised below, shall apply.
- 15.1.1. P2.2, "Second Penalty" title is changed to: "Second and Subsequent Penalties."
- 15.1.2. The first sentence of P2.2 is changed to: When a boat is penalized a second time and subsequent times, her penalty shall be a Two-Turn Penalty as described in rule 44.2, unless the penalty is signaled after the boat finishes, in which case the boat shall promptly notify the race committee that she is retiring.
- 15.1.3. P2.3 and P2.4 are deleted.
- 15.2. Appendix V1 shall apply. (See Appendix V posted on the Official Notice Board.)
- 16. SCORING INQUIRIES, PROTESTS/REQUEST FOR REDRESS:**
- 16.1. Score Inquiry Forms and Hearing Request Forms will be available from the on-site Protest Committee and on the Official Notice Board.
- 16.2. Competitors requesting clarification on their scores or Actions of the Race Committee shall submit a Scoring Inquiry Form to the RC or the Jury and go through the scoring inquiry process prior to filing a request for redress. This changes RRS 61.2.
- 16.3. If the scoring inquiry is not resolved by the RC to the boat's satisfaction, the boat may file for redress.
- 16.4. Requests for a redress hearing based on the outcome of a scoring inquiry must be filed within 10 (ten) minutes of receipt of the RC's reply to the inquiry.
- 16.5. **Protest Time Limit** is thirty (30) minutes from the time the RC Signal Boat for that class has docked. The time limit for each Race Area will be posted on the Official Notice Board.
- 16.6. Requests for hearings and requests for redress regarding incidents on the race course shall be delivered to the Protest Committee within the protest time limit. This changes RRS 61.3.
- 16.7. Notices of protests by the RC or Protest Committee will be posted on the Official Notice Board to inform boats under RRS 60.2 (d). This will include hearings regarding those boats not meeting registration requirements.
- 16.8. As soon as practicable, the Protest Committee will post the schedule and location of hearings. If parties to a hearing are available and have had time to prepare, the hearing may start before the Protest Time Limit.
- 16.9. To facilitate learning, judges are available to discuss the Rules of Sailing.
- 17. SCORING**
- 17.1. In compliance with USODA, the Green Fleet scores will be recorded and posted in sail number order.
- 17.2. For Optimist Green, Optimist R/W/B, ILCAs, and 420s one race shall constitute a series.
- 17.3. When six or more races have been scored, a boat's series score will be the total of her race scores excluding her worst excludable score. This changes RRS A2.1

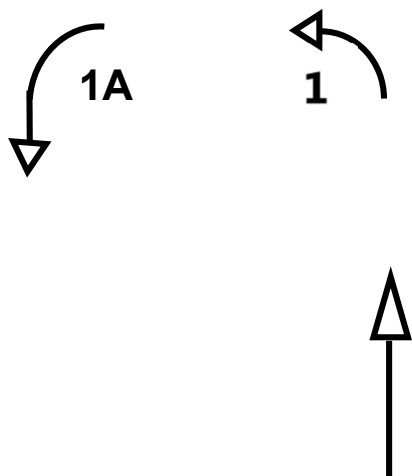
18. **TRASH DISPOSAL:** [DP] A competitor shall dispose of all refuse in appropriate containers ashore.
19. **OUTSIDE HELP**
- 19.1. [DP] Except for those boats in the trailing 75% of the Opti Green Fleet, boats shall not receive advice, instruction or any type of outside assistance from the time of her warning signal until she has finished. This changes RRS 41.
20. **AWARDS**
- 20.1. Awards will be presented at the white tent on the premises.
- 20.2. Awards will be presented to the top three finishers in Opti Red, Opti White, Opti Blue, ILCA 4, ILCA 6, and Non-Spinnaker 420 classes.
- 20.3. Awards will be presented to the top five finishers in the 420 Class.
- 20.4. The **River Romp Perpetual Trophy** will be awarded to the top overall Optimist finisher.
- 20.5. Green Fleet competitors may receive participation medals.
- 20.6. Awards in recognition of good sportsmanship will be given per the criteria in Addendum Three.
- 20.7. The Organizing Authority retains the right to make additional awards at its sole discretion.
21. **RISK STATEMENT and DISCLAIMER**
- RRS 3 states: ‘The responsibility for a boat’s decision to participate in a race or to continue to race is hers alone.’ By participating in this event, each competitor agrees and acknowledges that sailing is a potentially dangerous activity with inherent risks. These risks include strong winds and rough seas, sudden changes in weather, failure of equipment, boat handling errors, poor seamanship by other boats, loss of balance on an unstable platform and fatigue resulting in increased risk of injury. **Inherent in the sport of sailing is the risk of permanent, catastrophic injury or death by drowning, trauma, hypothermia or other causes. Competitors participate entirely at their own risk.** The organizing authority will not accept any liability for material damage or personal injury, illness or future illness or death sustained in conjunction with or prior to, during or after the regatta. An online waiver must be signed by all competitors and their parent/guardian.

**ADDENDUM ONE  
COURSE CONFIGURATIONS**



**RACE AREA A: OPTI GREEN FLEET**  
**RADIO VHF 78**  
**COURSE:** Start-1-2-3-Finish

**ICE CREAM COURSE:** Sail to ice cream flag on shore from wherever you are!  
Competitors do not need to cross the starting line for the Ice Cream Race.

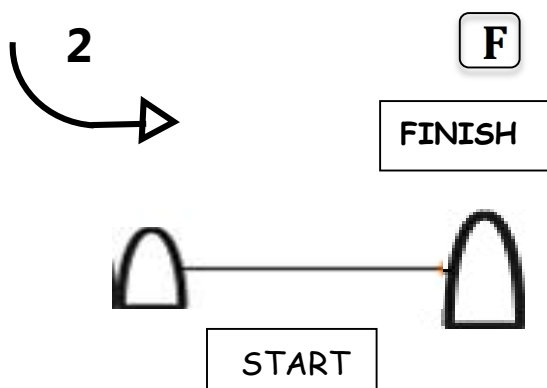


## Race Area B

Opti Red-White-Blue  
RADIO VHF 68

## Race Area C

ILCA/C420/Non-Spinnaker 420  
RADIO VHF 72



### COACH and SPECTATOR AREA

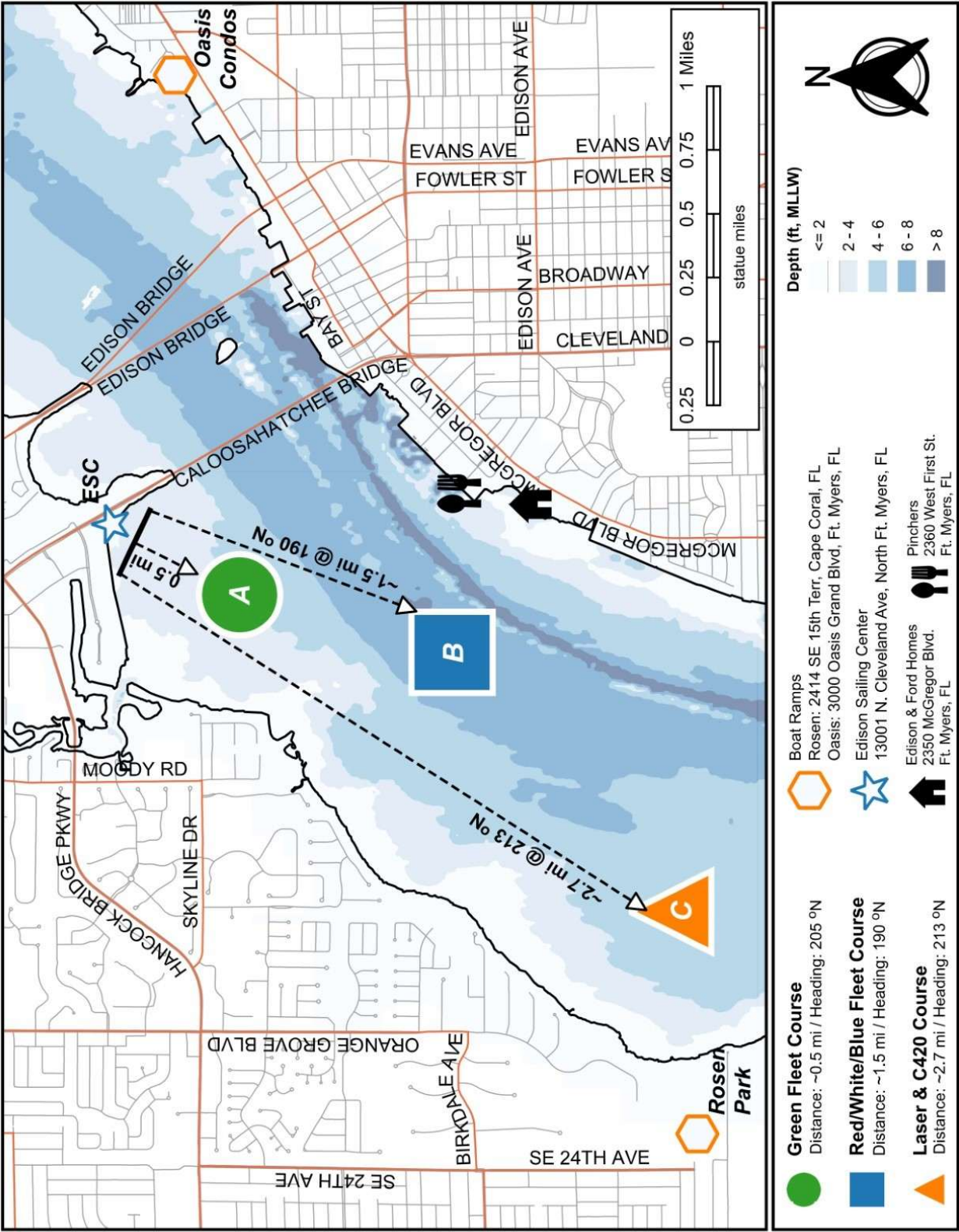
*When orange flag or blue  
flag is displayed, all coach  
and spectator boats  
please stay in this area.*

W/ L 1: Start-1-1A-2-Finish in front of RC

W/ L 2: Start-1-1A-2-1-1A-2-Finish in front of RC

*Note: Mark (1A) will be deleted in the event of a course change.*

ADDENDUM TWO: Race Areas



## **ADDENDUM THREE CORINTHIAN AWARD CRITERIA**

*Sailing Instructions, 20.4: An award in recognition of good sportsmanship will be given to one sailor in each class.*

“Competitors in the sport of sailing are governed by a body of rules that they are expected to follow and enforce. A fundamental principle of sportsmanship is that when competitors break a rule, they will promptly take a penalty, which may be to retire.” *Rachel Bennung*

### **Criteria for Consideration for the Sportsmanship Award**

1. Win with style; lose with style
2. Be respectful of all the aspects of the sport
3. Be courteous to other racers, coaches, race committee and volunteers
4. Be honest to all and take penalties even when no one saw the infraction and even when not protested
5. Follow the rules, enforce the rules and sail fairly
6. Gladly help others on the water and on shore, which could include loaning equipment to others and even loaning your boat if you caused damage that resulted in another team being unable to sail their boat.
7. Thank the race committee before returning to shore.
8. Thank the event volunteers
9. Give credit to your crew, your team, your coach and parents
10. Be supportive to others
11. Congratulate the winners
12. Be a role model