



**2025 GBICA Wednesday Night Races**  
**Organizing Authority: Galveston Bay Cruising Association**  
**Clear Lake Shores, TX USA**

**Amendment #4**

**SAILING INSTRUCTIONS**

**1 RULES**

- 1.1 The event is governed by the *rules* as defined in *The Racing Rules of Sailing (RRS)*.
- 1.2 The notation “[DP]” in a rule in these Sailing Instructions means that the penalty for a breach of a rule may, at the discretion of the protest committee, be less than disqualification.
- 1.3 Rule 60.4(a)(2) is changed as follows: “(2) If it alleges a breach of a rule of Part 2 or rule 31 and is from a boat that was not involved in, and did not see, the incident, or”
- 1.4 Start sequence is determined by the start board, but starts will be dictated by sound, not physical flag. This changes RRS Rule 26.
- 1.5 The first two sentences of rule 44.1 are changed to: ‘A boat may take a One-Turn Penalty when she may have broken a rule of Part 2 or rule 31 while racing.’ Racers are reminded of the obligation to keep clear of other boats while doing so, and RRS 44.1 b “if the boat caused injury or serious damage or, despite taking a penalty, gained a significant advantage in the race or series by her breach her penalty shall be to retire.”

**2 REGISTRATION AND FEES**

- 2.1 Current Series registration will be posted on the front page at [www.gbca.org](http://www.gbca.org)
  - Active GBICA Senior Members: The entry fee is \$150 for the full season of racing for all classes.
  - Non-GBICA Senior Members: The entry fee is \$250 for the full season for all classes.
  - The entry fee is \$60 for a single series for all classes.
  - Single Race: The entry fee is \$25 for a single race for all classes.

### **3 Schedule**

3.1 The scheduled season is made up of 5 series of 4 nights of racing with a bye week after each series. One race may constitute a series. Canceled races may not be rescheduled. Cancellation may be for safety reasons, low water, non-competitive conditions, equipment failures, or any other reason or no reason, at the sole discretion of the Race Committee.

- Wednesday, March 26th 19:00 hours Skippers Meeting/Kick-off party at BARge
- Wednesday, April 9th 18:15 hours Series 1, Race 1, first warning signal.
- Wednesday, May 7th 19:00 hours Bye-week, no racing. Series awards at BARge.
- Wednesday, May 14th 18:15 hours Series 2, Race 1, first warning signal.
- Wednesday, June 11th 19:00 hours Bye-week, no racing. Series awards at BARge.
- Wednesday, June 18th 18:15 hours Series 3, Race 1, first warning signal.
- Wednesday, July 16th 19:00 hours Bye-week, no racing. Series awards at BARge.
- Wednesday, July 23rd 18:15 hours Series 4, Race 1, first warning signal.
- **Wednesday, August 13th est. 19:00 hours Series 4, Race Series 4 awards at BARge immediately after racing.**
- Wednesday, August 27th 18:15 hours Series 5, Race 1, first warning signal.
- **Wednesday, September 17th est. 19:00hours Series 5, Race 4, Series 5 awards at BARge immediately after racing.**

### **4 CHANGES TO SAILING INSTRUCTIONS**

- 4.1 Any change to the sailing instructions will be posted before 08:00 on the day it will take effect, except that any change to the schedule of races will be posted by 20:00 on the day before it will take effect.
- 4.2 If and any changes made to the sailing instructions are posted, the race committee may also notify competitors through an email and/or SMS text through the Regatta Network platform to the email address and/or phone number used at registration.

## **5 COMMUNICATIONS WITH COMPETITORS**

- 5.1 Notices to competitors will be posted on the Regatta Network event Notice Board, and the GBCA Forum Wednesday Night Racing site.
- 5.2 [DP] While racing, except in an emergency, a boat shall not make voice or data transmissions and shall not receive voice or data communication that are not available to all boats.

## **6 CODE OF CONDUCT**

- 6.1 [DP] Competitors and support persons shall comply with reasonable requests from race officials.
- 6.2 [DP] Competitors and support persons shall handle any equipment provided by the organizing authority with care, seamanship, in accordance with any instructions for its use and without interfering with its functionality.

## **7 SIGNALS MADE ASHORE**

- 7.1 Signals made ashore will be displayed via the Regatta Network event Notice Board, and at the GBCA Forum Wednesday Night Racing site.
- 7.2 [NP] In the event of signals made ashore, the Race Committee *may* also notify participants via SMS text and/or email messages to the contact information provided at registration.

## **8 CLASS DESIGNATIONS**

- 8.1 The class designations are as follows:

Portsmouth	PS
PHRF-non-spin	NS
PHRF-spin	SP
Multihull	2H

## **9 RACING AREA**

- 9.1 SI Addendum #1 shows the location of the racing area.

## **10 COURSES**

- 10.1 No later than five (5) minutes before the first warning signal, the race committee will designate the course and starting order from course boards hung from the upper deck of Barge 295.
- 10.2 The diagram(s) in SI Addendum #2 show(s) the course(s), including the approximate bearings, the order in which marks are to be passed, approximate distance, and the side on which each mark is to be left.

## **11 MARKS**

11.1 The following fixed marks may be used:

- Mark S – A red floating sphere located approximately 150 yards SE of Barge 295
- Mark F – A red floating cylinder located approximately 75 yards SE of Barge 295
- Clear Creek Channel Marker #16 – A stationary Red channel marker located at - 29° 33.300'N 95° 02.549'W
- WNR Mark L – A lighted orange and white floating cylinder located at approximately - 29° 33.590'N 95° 02.850'W
- Green #1 – A stationary Green channel marker located at - 29° 33.182'N 95° 01.930'W

## **12 THE START**

12.1 The starting line is between a Mark F at the starboard end and the course side of the Mark S starting mark.

12.2 Races will be started using an automated starting box using a RRS Appendix U – Audible-Signal starting sequence. A typical starting sequence is as follows:

- **Three long blasts - 1st Class Warning (3:00 to start)**
- **Two long blasts – 2:00 to start**
- **One long, three short blasts - 1:30 to start**
- **One long blast - 1:00 to start**
- **Three short blasts - :30 sec to start**
- **Two short blasts - :20 sec to start**
- **One short blast - :10 sec to start**
- **Countdown of 5 short blasts - 5,4,3,2,1 sec to start**
- **One long blast - Class 1 Start - Class 2 warning signal**
- **Etc. for remaining classes**

12.3 All starts will be rolling, with the first warning signal made at 18:15:00 GPS time.

12.4 Boats whose warning signal has not been made shall avoid the starting area during the starting sequence for other classes.

12.5 A boat that does not start within 10 minutes after her starting signal will be scored Did Not Start (DNS) without a hearing.

## **13 THE FINISH**

13.1 The finishing line is between Mark F and the course side of a GBCA flag located on the upper deck of Barge 295.

13.2 If the race committee is absent when a boat finishes, she shall report her finishing time, and her position in relation to nearby boats, to the race

committee at the first reasonable opportunity. It is recommended you take a photograph of GPS time and coordinates to support.

## **14 TIME LIMIT**

- 14.1 Any boat failing to finish any race by sunset shall be scored DNF (Did Not Finish) without a hearing. This changes RRS 35, A5.1 and A5.2.

## **15 HEARING REQUESTS**

- 15.1 The protest time limit is 24 hours after the last boat finishes a given race.
- 15.2 Paper hearing request forms are available from the GBCA clubhouse, however electronic filings using the US Sailing app are preferred by the protest committee. Please forward all filings to [may.chris.w@gmail.com](mailto:may.chris.w@gmail.com).
- 15.4 Notices of protests and the hearing schedule will be posted no later than 24 hours after the close of the deadline for filing protests. Notices and schedules will be posted using the Regatta Network official notice board.
- 15.5 Notices of protests by the race committee, technical committee, or protest committee will be posted to inform boats under RRS 60.2(d).
- 15.6 Breaches of Sailing Instructions 4.2, 7.1, 10.1, and 12.5 will not be grounds for a protest or request for redress by a boat. This changes RRS 60.1.

## **16 SCORING**

- 16.1 PHRF based classes will be scored using Time on Time with the following conversion formula:  $TCF = 650 / (550 + x)$ , where x equals PHRF Handicap.
- 16.2 Portsmouth class competitors will be scored using the applicable rating from the Portsmouth Yardstick database.
- 16.3 Multihull classes will be scored using the appropriate SCHRS rating number.

## **17 SAFETY REGULATIONS**

- 17.1 [DP] A boat that retires from a race shall notify the race committee at the first reasonable opportunity by cell phone.
- 17.2 Contacts for Race Committee: Kevin Hayes 281-960-4329

## **18 PRIZES**

- 18.1 Series awards will be presented at BARge 295 immediately following the last race in a series. An award will be presented to the 1st place competitor in each class per series. Additional awards may be given at the discretion of the race committee.
- 18.2 Awards for the season will be given to the first and second highest scoring competitor in each class based on points per race. Only competitors registered for the entire season will be eligible for an annual award.

Additional awards may be given at the discretion of the race committee.

## **19 RISK STATEMENT**

- 19.1 RRS 3 states: 'The responsibility for a boat's decision to participate in a race or to continue *racing* is hers alone.' By participating in this event each competitor agrees and acknowledges that sailing is a potentially dangerous activity with inherent risks. These risks include strong winds and rough seas, sudden changes in weather, failure of equipment, boat handling errors, poor seamanship by other boats, loss of balance on an unstable platform and fatigue resulting in increased risk of injury. **Inherent in the sport of sailing is the risk of permanent, catastrophic injury or death by drowning, trauma, hypothermia or other causes.**

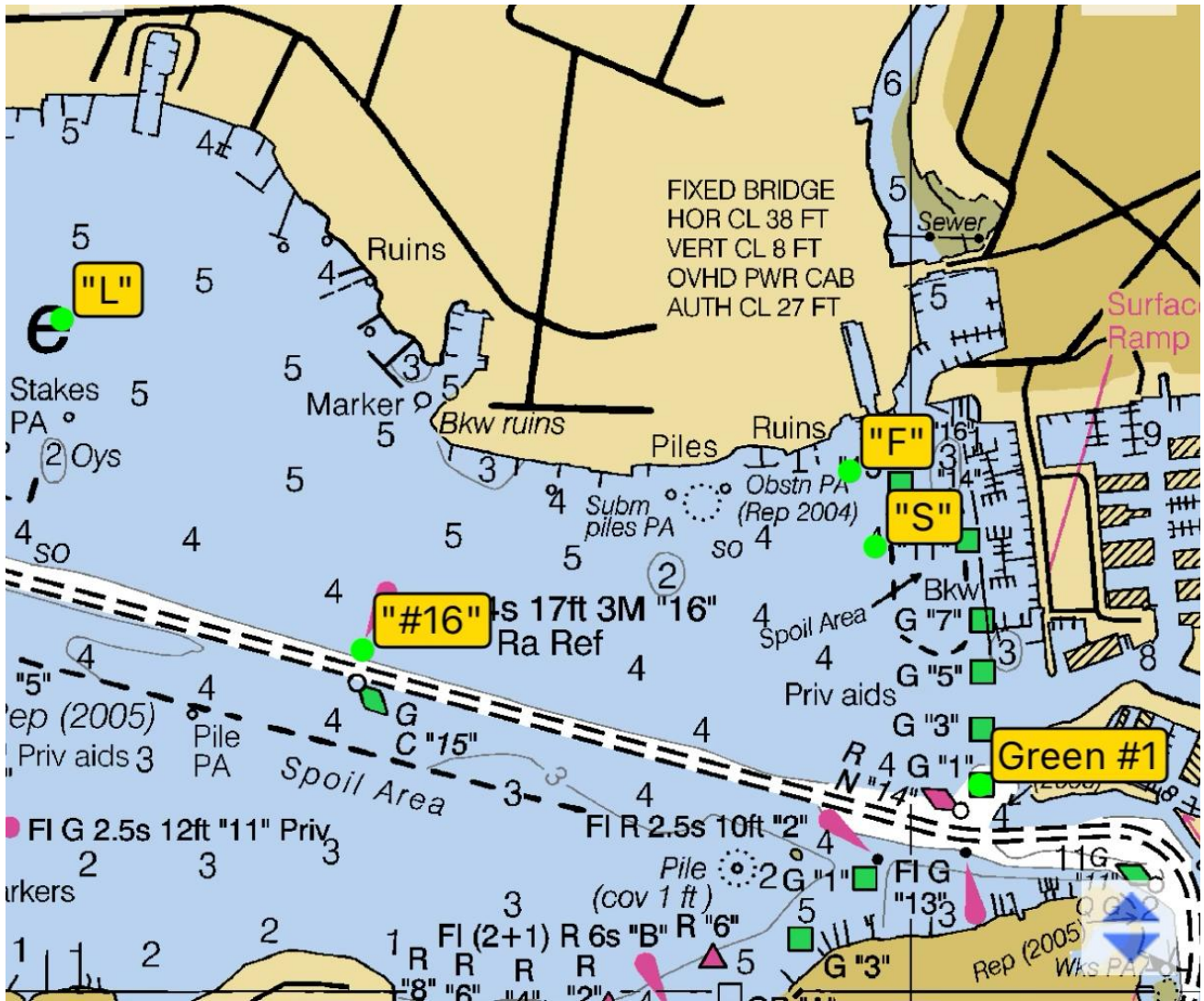
## **20 INSURANCE**

- 20.1 Each participating boat shall be insured with valid third-party liability insurance.



## SI ADDENDUM #1

### Racing Area



## **SI ADDENDUM #2**

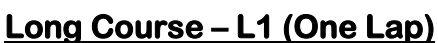
### **Courses**

#### **Short Course – S1 (One Lap)**

<b><u>Mark</u></b>	<b><u>Est .Bearing</u></b>	<b><u>Distance (nm)</u></b>	<b><u>Leave Mark to:</u></b>
Start			
#16	250	0.45	Port
Green 1	102	0.55	Port
“F”	338	<u>0.30</u>	Port
	Total Dist.	1.3nm	

- **Additional laps will be designated by numeral on the course board (S2, S3, S4, etc.)**





<b><u>Mark</u></b>	<b><u>Est .Bearing</u></b>	<b><u>Distance (nm)</u></b>	<b><u>Leave Mark to:</u></b>
<b>Start</b>			
<b>#16</b>	<b>250</b>	<b>0.45</b>	<b>Port</b>
<b>Green 1</b>	<b>102</b>	<b>0.55</b>	<b>Port</b>
<b>L</b>	<b>297</b>	<b>0.90</b>	<b>Port</b>
<b>Green 1</b>	<b>117</b>	<b>0.90</b>	<b>Port</b>
<b>Finish</b>	<b>338</b>	<b><u>0.30</u></b>	
	<b>Total Dist.</b>	<b>3.10nm</b>	



### Long Course – L2 (Two Laps)

<b>Mark</b>	<b>Est .Bearing</b>	<b>Distance (nm)</b>	<b>Leave Mark to:</b>
Start			
#16	250	0.45	Port
Green 1	102	0.55	Port
L	297	0.90	Port
Green 1	117	0.90	Port
L	297	0.90	Port
Green 1	117	0.90	Port



Finish	338	<u>0.30</u>	
	Total Dist.	4.90nm	



### Course A1 (One Lap)

<u>Mark</u>	<u>Est .Bearing</u>	<u>Distance (nm)</u>	<u>Leave Mark to:</u>
Start			
L	261	0.73	Port
Green 1	117	0.90	Port
"F"	338	<u>0.30</u>	Port
	Total Dist.	1.92nm	

- Additional laps will be designated by numeral on the course board (A2, A3, A4, etc.)

