



**Neuse Yacht Racing Association
2025 Full Moon Overnight Race
August 9-10, 2025**

SAILING INSTRUCTIONS

The notation "[NP]" in a rule means that a boat may not protest another boat for breaking that rule. This changes RRS 60.1.

1 RULES

- 1.1 The race will be governed by the current edition of The Racing Rules of Sailing, including the USSailing prescriptions; the USCG Minimum Equipment Requirements for Recreational Vessels; the NC Wildlife Commission Minimum Safety Equipment; the regulations of NC-PHRF; and the Notice of Race.
- 1.2 Between the hours of sunset and sunrise the rules of Part 2 are replaced with the International Regulations for Preventing Collisions at Sea (IRPCAS).

2 NOTICES TO COMPETITORS

- 2.1 Notices to competitors will be posted on the Official Notice Board on Regatta Network <https://www.regattanetwork.com/event/30187> and may be posted on the clubhouse window facing the deck at BSC.
- 2.2 Notices to competitors that are made prior to the scheduled registration shall be made by sending an email to the address provided in the entry form.

3 CHANGES TO SAILING INSTRUCTIONS

- 3.1 Any change to the sailing instructions will be posted before 1400 on the day of the race.
- 3.2 Oral changes may be made on the water pursuant to RRS 90.2(c). The RC will display race signal "L", announce the change over VHF channel 78A in the 10 minutes prior to the start, and get acknowledgement from each boat.

4 SIGNALS MADE ASHORE

- 3.2 Signals made ashore will be displayed from the flagpole on the deck at BSC.
- 3.3 When flag AP is displayed ashore, '1 minute' is replaced with 'not less than 60 minutes.' This changes race signal AP.
- 3.4 When race signal "L" is displayed ashore, a notice to competitors has been posted.

5 RACE SCHEDULE

- 5.1 Registration on the BSC deck will begin at 1800 followed by a competitor's meeting at 1830.
- 5.2 The scheduled time of the warning signal is 1955.

6 CLASSES

- 6.1 Boats may be divided into classes based on the number and ratings of entries.
- 6.2 Class flag for the sequence for the first start will be code flag "A."

7 RACING AREA

The racing area is between Oriental and BSC on Broad Creek.

8 COURSES

8.1 Prior to the warning signal the course to be sailed will be indicated by the display of a numeral pennant on the signal boat and will be announced via VHF 78A. The numeral pennant will correspond to one of the following courses:

Course "1" (36.5 nm)

From the Start: leave Neuse River #17 to port; leave Neuse River #8 to port; leave Neuse River #7 to port; leave Neuse River #8 to starboard; leave Neuse River #17 to starboard; to the Finish.

Course "2" (38.9 nm)

From the Start: leave Neuse River #17 to port; leave Neuse River #8 to port; leave Fl G #1 AC to port; leave Fl G #1 (Oriental) to starboard; leave Fl G #7 to starboard; **leave Neuse River #8 to starboard**; leave Neuse River #17 to starboard; to the Finish.

8.2 Courses will not be shortened. This changes RRS 32.

9 CHECK IN

[NP] Prior to the first warning signal, each boat shall check in with the Race Committee by sailing astern of the signal boat and hailing on VHF Channel 78A the name of the boat, its sail number, and the number of persons aboard.

10 THE START

10.1 The starting line will be between a staff displaying an orange flag on the signal boat and Broad Creek # "2".

10.2 This is a pursuit start event. Start times will be provided at the competitors' meeting and may be emailed to all entrants. RRS 26 will govern for the first start. Subsequent starts will be announced over VHF 78A.

10.3 No boat shall start later than 30 minutes after her starting signal.

11 RECALLS

11.1 In the event of individual recalls, the race committee will endeavor to hail the sail numbers of the OCS boats over VHF Channel 78A. Failure to hear such hail or the timing and order of such hail shall not be grounds for redress.

11.2 A boat that is OCS and fails to return to start properly will be penalized without a hearing by the addition of 30 minutes to her elapsed time. This adds to rule 30.

12 TIME LIMIT

There is no time limit.

13 THE FINISH

13.1 A boat finishes when she is abeam of and has Broad Creek #2 within 100 feet to starboard.

13.2 Each boat shall broadcast on channel 78A that they have finished and shall text their finish time to 949-533-5543.

14 PROTESTS

15.1 A boat intending to protest shall inform the RC when reporting her finish time. This adds to rule 60.3.

15.2 Protests shall be written and submitted to the RC at BSC by 0900 Sunday, August 10.

15.3 Pursuant to NoR 1.4 protest are to be arbitrated.

15 SCORING

Subject to the results of protests, the order of finish determines the order of placement in each class.

16 COMMUNICATION

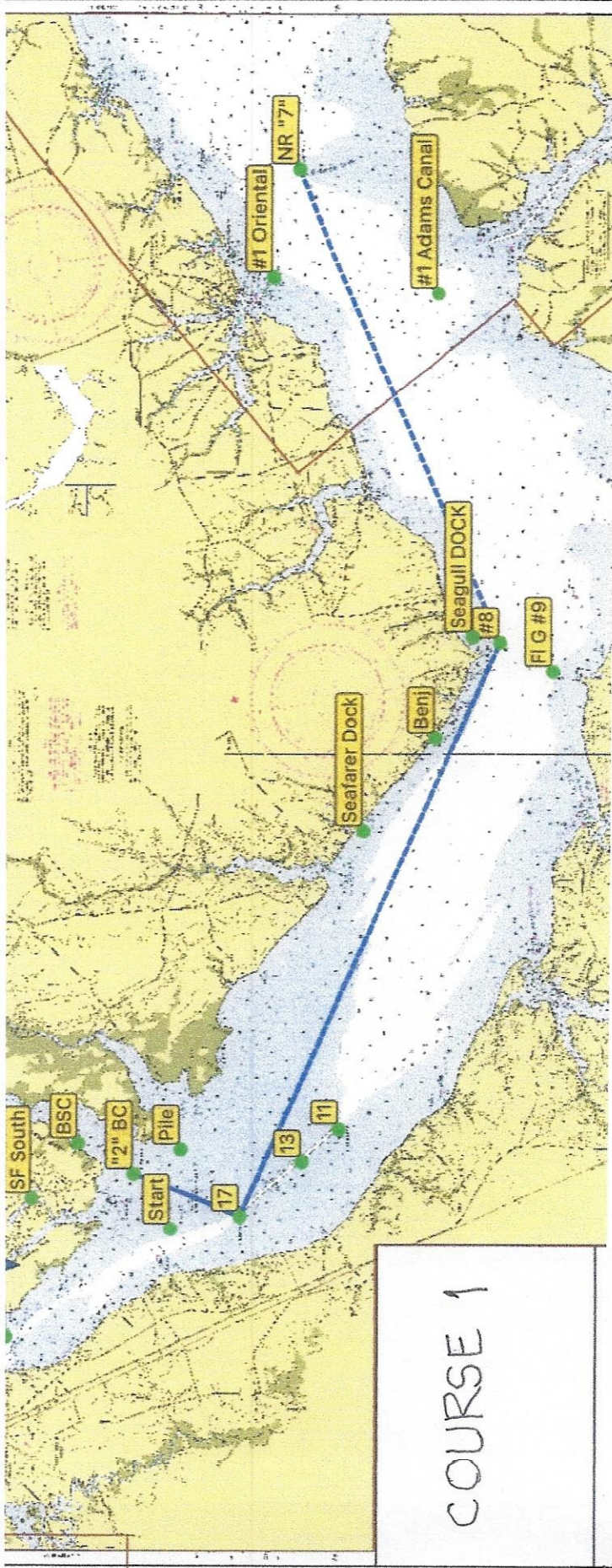
16.1 While racing, boats shall neither make nor receive radio or cell phone transmissions not available to all boats with the following exceptions: in emergencies; in response to contact initialized by the RC; or in contacting the RC when retiring or finishing (see SI 13.2)

16.2 In the event of an emergency, boats shall contact the US Coast Guard on VHF Channel 16 and announce the nature of the emergency to the fleet on 78A

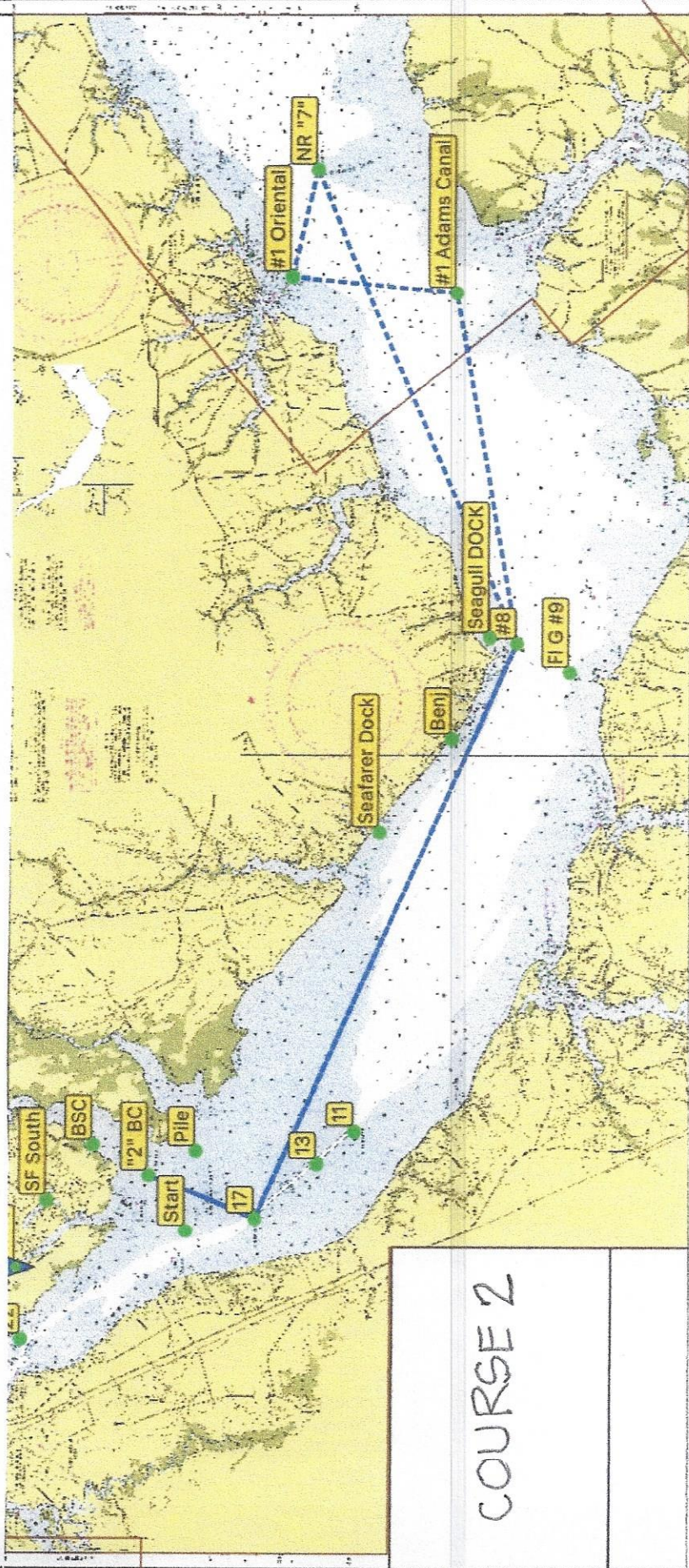
16.3 In the event a boat retires it is essential that she inform the Race Committee, either via VHF 78A or by text to 949-533-5543.

17 PRIZES

Prizes will be awarded at BSC during the Sunday morning Continental Breakfast.



COURSE 1



COURSE 2

**Pursuit Start Sheet For
Neuse Yacht Racing Association
2025 NYRA Full Moon Overnight Regatta**

Start Time: **Distance:** **MAX Rating:**
Limit To Division: ▼

Date: _____

Start	Sail#	Skipper	Boat Name	Class/Fleet	PHRF
20:00:00	584	Jim Hinckley	Happy Camper	Class B Cruising/Non Spin pursuit	237
20:40:09	na	Al Lang	Mystic Blue	Class B Cruising/Non Spin pursuit	171
20:51:06	H360	Clifford Lennox	Latitude Adjustment	Class B Cruising/Non Spin pursuit	153
21:11:11	751	Ed Thompson	Dutch Wind	Class A Spin pursuit	120

Start Time: **Distance:** **MAX Rating:**
Limit To Division: ◆

Date: _____

Start	Sail#	Skipper	Boat Name	Class/Fleet	PHRF
20:00:00	584	Jim Hinckley	Happy Camper	Class B Cruising/Non Spin pursuit	237
20:42:01	na	Al Lang	Mystic Blue	Class B Cruising/Non Spin pursuit	171
20:53:28	H360	Clifford Lennox	Latitude Adjustment	Class B Cruising/Non Spin pursuit	153
21:14:29	751	Ed Thompson	Dutch Wind	Class A Spin pursuit	120

*Indicates PHRF rating was computed from Portsmouth rating [(DPN-55) * 6]