



**2026 Gasparilla Regatta  
Tampa, Florida, January 10 & 11, 2026**

**SAILING INSTRUCTIONS**

**1. RULES**

- 1.1. The regatta will be governed by the rules as defined in The Racing Rules of Sailing.
- 1.2. Competitors and boats shall comply with the current USODA, ILCA and C420 class rules.

**2. CHANGES TO SAILING INSTRUCTIONS**

- 2.1. Any change to the Sailing Instructions will be posted before 0800 on the day it will take effect. A change in the schedule of races will be posted by 2000 on the day before it will take effect.

**3. COMMUNICATIONS WITH COMPETITORS**

- 3.1. Notices to competitors will be posted on the official notice board located at the Dockmaster's office
- 3.2. The race office is located at the Dockmasters Office.

**4. SIGNALS MADE ASHORE**

- 4.1. Signals made ashore will be displayed from the flagpole located by the fuel dock of the yacht club.
- 4.2. If a postponement is signaled ashore, the warning signal will be made not less than 30-minutes after AP is lowered.
- 4.3. [DP] Flag D with one sound means 'Competitors shall not leave the shore until flag D is displayed. The warning signal will not be made before the scheduled time or less than 30 minutes after flag D is displayed.'

**5. SCHEDULE OF RACES**

Saturday, January 10:

Competitor's meeting: 0900  
First warning signal: 1000 for C420 1030 for Optis

Sunday, January 11:

First warning signal: 0930 for C420 1000 for Optis  
Last warning signal: On or before 1400.

Subsequent races will be held as soon as possible after the end of the previous race.

**6. CLASS FLAGS**

- 6.1. Class flags will be posted during the competitor's meetings.
- 6.2. Any signal directed to one class only will have the class flag displayed at the same time as the signal. Signals without a class flag will apply to all classes.

**7. RACING AREA**

- 7.1. The racing area will be in Hillsborough Bay East of Tampa Yacht & Country Club.
- 7.2. The location of each course will be described in the competitor's meeting.

**8. COURSES and MARKS**

- 8.1. The attached diagrams show the courses, the course designations, the marks in order, and the rounding direction of each mark.

- 8.2. Marks will be described at the competitors' meeting.
- 8.3. Opti Green will use course "T".
- 8.4. RWB/C420 Fleets will use course "W2."
- 8.5. Courses will not be shortened. This changes RRS 32.
- 8.6. Legs of the course will not be changed after the preparatory signal. This changes RRS 33.

## 9. THE START

- 9.1. The starting line will be between the staff displaying the orange flag on the RC signal boat and the nearby orange starting mark.
- 9.2. Races will be started in accordance with RRS 26.
- 9.3. Prior to the first race of each day, competitors shall check in by sailing past the stern of the signal boat and hailing their sail number. Don't just sail by, make sure the signal boat acknowledges that you have checked in.
- 9.4. Boats whose warning signal has not been made shall avoid the starting area during the starting sequence for other races.
- 9.5. Boats who fail to start 3-minutes after their starting signal will be scored DNS without a hearing. This changes rules 63.1 and A4.
- 9.6. The RC may hail premature starters. Failure of the RC to hail a premature starter or a competitor's failure to hear such a hail shall not be grounds for redress; the skipper is solely responsible for starting in accordance with the RRS.

## 10. THE FINISH

- 10.1. The finishing line will be between the staff displaying a blue flag on the RC signal boat and the course side of the finishing mark.

## 11. TIME LIMIT

- 11.1. The time limit for each race will be 45-minutes for the first boat to finish.
- 11.2. Boats failing to finish within 20 minutes after the first boat sails the course and finishes will be scored TLE (Time Limit Exceeded) without a hearing and will receive two more points than the last finisher, but not more than DNF. This changes RRS 35, A5.1, A5.2 and A10.

## 12. HEARING REQUESTS

- 12.1. Competitors intending to protest must inform the RC of the intention to protest and provide the sail number of the protestee immediately after finishing the race in which the protest occurred. This changes RSS 61.
- 12.2. For each class, the protest time limit is 30 minutes after the last boat in that class finishes the last race of the day or the race committee signals no more racing today, whichever is later. The time will be posted on the official notice board.
- 12.3. Written protests shall be delivered to the protest committee within 30 minutes of the RC signal boat docking.
- 12.4. A list of protests received will be posted on the notice board within 30-minutes after the protest time has expired. Hearings will be held as soon as possible after racing each day in the dockmasters office or as determined by the protest committee.

## 13. SCORING

- 13.1. The Low Point System of Appendix A of the racing rules will apply.
- 13.2. One completed race will constitute a series.

- 13.3. When fewer than six (6) races have been completed, a boat's series score will be the total of her race scores. When from six (6) to ten (10) races have been completed, a boat's series score will be the total of her race scores excluding her worst score. When eleven (11) or more races have been completed, a boat's series score will be the total of her race scores excluding her two (2) worst scores. This changes RRS A2.1.

#### 14. ENVIRONMENTAL AND SAFETY

- 14.1. [DP] RRS 47 will be strictly enforced: "Competitors and support persons shall not intentionally put trash in the water. This rule applies at all times while afloat and ashore.
- 14.2. [DP] A boat retiring from a race shall notify a RC vessel before leaving the course if possible; otherwise, a boat retiring from a race shall notify the Regatta Office immediately after arrival ashore.
- 14.3. [DP] Support, spectator, and coach boats shall stay well clear of the course while any race is in progress unless rendering assistance to competitors in danger. If a competitor receives such assistance they shall retire. No wake is permitted within 500 yards of the racecourse while boats are racing.
- 14.4. When returning, sailors shall check in at the check-in table before the protest time limit. Failure to check-in will result in a sailor being scored a 10% scoring penalty for the day without a hearing. This changes RRS 63.1
- 14.5. [DP] All outboard-equipped support vessels shall be equipped with a functioning engine safety cut-out switch (kill switch) which shall remain attached to the support person (operator) at all times when the engine is on. Support vessels shall check-in with the RC Signal vessel before the first race of each day to demonstrate compliance.

#### 15. TROPHIES

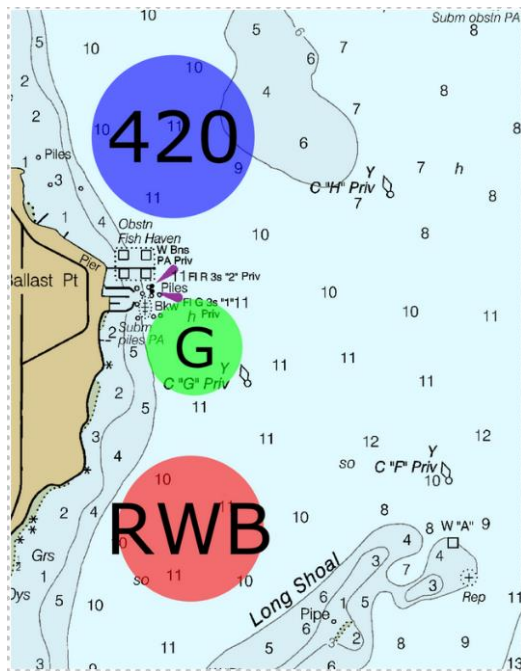
- 15.1. Overall Opti awards will be given to the top three finishers. Opti Red, Blue and White awards will be given to the top finisher.
- 15.2. Overall awards will be given to the top three finishers in fleets where there are more than five (5) competitors.
- 15.3. An overall award will be awarded for the 1<sup>st</sup> place finisher in fleets with less than five competitors.

#### 16. RISK STATEMENT

- 16.1. RRS 3 states: 'The responsibility for a boat's decision to participate in a race or to continue to race is hers alone.' By participating in this event each competitor agrees and acknowledges that sailing is a potentially dangerous activity with inherent risks. These risks include strong winds and rough seas, sudden changes in weather, failure of equipment, boat handling errors, poor seamanship by other boats, loss of balance on an unstable platform and fatigue resulting in increased risk of injury. Inherent in the sport of sailing is the risk of permanent, catastrophic injury or death by drowning, trauma, hypothermia or other causes.

# ADDENDUM A

## Racing Area



## Courses

Green Fleet	Opti RWB/420/Laser
<p>The diagram shows a race course for the Green Fleet. It starts at a 'Start/Finish' line marked with a red dot and a blue dashed line. The course consists of three red numbered markers: 1 (top right), 2 (middle left), and 3 (bottom right). Arrows indicate a counter-clockwise sequence: 1 to 2, 2 to 3, and 3 back to the Start/Finish line.</p>	<p>The diagram shows a race course for the Opti RWB/420/Laser. It starts at a 'Start' line marked with a red dot and a blue dashed line. The course consists of three yellow numbered markers: 1 (top left), 2S (middle left), and 2P (middle right). Arrows indicate a sequence: 1 to 2S, 2S to 2P, and 2P to the 'Finish' line, which is marked with a red dot and a blue dashed line.</p>
T = Start – 1 – 2 – 3 – Finish	W2 = Start – 1 – 2 – 1 – 2 – Finish