

Bob Barnes Regatta 2025

Sapphire Bay Yacht Club

Lake Ray Hubbard, Texas

Sailing Instructions

1 Rules

- 1.1 The event is governed by the rules as defined in *The Racing Rules of Sailing* for 2025-2028 (RRS).

2 Changes To Sailing Instructions

- 2.1 Any change to the sailing instructions will be posted before 0900 on the day it will take effect, except that any change to the schedule of races will be posted by 2000 on the day before it will take effect.
- 2.2 Changes to a sailing instruction may be made on the water by announcement from Race Committee over VHF radio channel 71. Acknowledgements from competitors will be logged by on-water Race Committee. Failure to hear change announcements will not be grounds for redress.

3 Communication

- 3.1 The official online notice board is located on the SBYC website <https://www.sbyc-tx.org/racing/racing-notice-board>
- 3.2 All boats shall carry a VHF radio capable of communicating on channels 16 and 71.
- 3.3 On the water, the race committee will make courtesy broadcasts to competitors on VHF radio channel 71.
- 3.4 While racing, except in an emergency, a boat shall not receive voice or data communication that is not available to all boats.
- 3.5 Race Signals by Radio. The Race Committee may broadcast safety and other information to competitors, including that the race is postponed or abandoned, the course is shortened, or a mark is missing. This changes RRS Race Signals. Failure to hear any broadcast will not be grounds for redress

4 Code of Conduct

- 4.1 Competitors and support persons shall comply with reasonable requests from race officials.

5 Signals Made Ashore

- 5.1 Signals and notices made ashore, if any, will be displayed on a notice board located in Sapphire Bay Marina Easy Days Pavilion.

6 Schedule

- 6.1 Dates of racing:
September 13, 2025
- 6.2 Number of races:

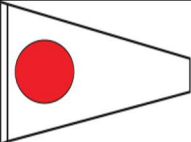
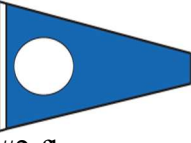
- Up to two Rule 26 races for Fleets A, B, C, D.
- One pursuit race for all Fleets.

6.3 Scheduled times:

- Skipper's meeting: 9:00 in the Sapphire Bay Marina Easy Days Pavilion
- First warning signal at 10:00 am for a 10:05 am start.
- On-water lunch break.
- Pursuit race start targeting between 1:00 – 1:30pm.
- Award ceremony at 5:30 at Sapphire Bay Marina pavilion.
- Post-race party at 6:00 at Sapphire Bay Marina pavilion.

7 Class Flags

7.1 The fleets and class flags for Rule 26 starts:

Start Number	Fleets	Warning (Class) Flag
1	A and B	 #1 flag
2	C and D	 #2 flag

8 Racing Area

8.1 The racing area is the north end of Lake Ray Hubbard, south of the I-30 causeway.

9 Courses

9.1 Rule 26 Races:

- Courses for the A and B fleets will predominantly be Windward/Leeward.
- Courses for C and D fleets will be chosen to accommodate main/jib boats, to include reaching legs when feasible. Dead downwind legs will be avoided.
- No later than the warning signal, the race committee signal vessel will display the course definition as described in Appendix A.
- Standard courses are described in Appendix A.

9.2 Pursuit Races:

- Boats will sail a course comprised of the permanent marks on Lake Ray Hubbard, maintained by RCYC, Sapphire Bay Yacht Club, and Chandlers Landing Yacht Club:
 - Course will be announced on VHF Channel 71 and posted on RC boat no less than 5 minutes before the warning signal. VHF communication is a courtesy and failure to hear will not be grounds for redress.
- Afternoon pursuit racecourse is defined in Appendix C.

- i) Start / Finish line will be between Permanent Mark 27(Club Mark) and the Race Committee boat.
- c) Fixed marks are described in Appendix B.
- d) If fixed marks are not used, prior to the warning signal, the Race Committee will display Flag L (Come Within Hail) and announce use of temporary marks.

10 Obstructions

10.1 No defined obstructions

11 The Start

- 11.1 Morning races will be started using RRS 26 for Fleets A, B, C, and D.
- 11.2 The starting line will be between a staff displaying an orange flag on the committee boat (anchored) at the starboard end of the line and the port end Starting Mark.
- 11.3 The starting line will be located to leeward of the leeward mark, as shown in Appendix A.
- 11.4 Boats whose warning signal has not been made shall avoid the starting area during the starting sequence for other races.
- 11.5 If any part of a boat's hull is on the course side of the starting line at her starting signal and she is identified, the race committee will attempt to hail her sail number. Failure to hail her number, failure of her to hear such a hail, or the order in which boats are hailed will not be grounds for a request for redress.
- 11.6 A boat that does not start within 5 minutes after her starting signal may be scored DNS. This modifies RRS A5.3.

12 Change of Course After Start

- 12.1 Courses will be shortened if necessary, per RRS 32.2.

13 The Finish

- 13.1 The finish line will be between:
 - a) A staff displaying a blue flag on the Race Committee boat at the starboard end and the Starting Mark (or other mark of the course) at the port end.

14 Time Limits and Target Times

14.1 Rule 26 Races

- e) If no boat has finished within 1.25 hour of the start, the race will be abandoned.
- f) A Finishing Window within a Fleet of 30 minutes after the first boat to finish will be in effect. Boats failing to finish within the Finishing Window shall be scored DNF. This changes RRS A4 and A5.

14.2 Pursuit Races

- g) If no boat has finished within 2.25 hour of the start, the race will be abandoned.
- h) A Finishing Window within a Fleet of 60 minutes after the first boat to finish will be in effect. Boats failing to finish within the Finishing Window shall be scored DNF. This changes RRS A4 and A5.

15 Hearing Requests

- 15.1 The protest time limit is 60 minutes after the Signal Boat returns to the dock.

- 15.2 Hearing request forms are available from the Race Committee immediately after the race, on the Regatta Network documents page for the event, on the SBYC website, and from US Sailing.
- 15.3 Hearing request forms shall be filed with the SBYC Vice Commodore by email at vicecommodore@sbyc-tx.org or Race Committee PRO in person after the race.
- 15.4 Competitors involved in a protest hearing will be notified in person, if possible, or by email.

16 Safety Regulations

A boat that retires from a race shall notify the Race Committee at the first reasonable opportunity.

17 Risk Statement

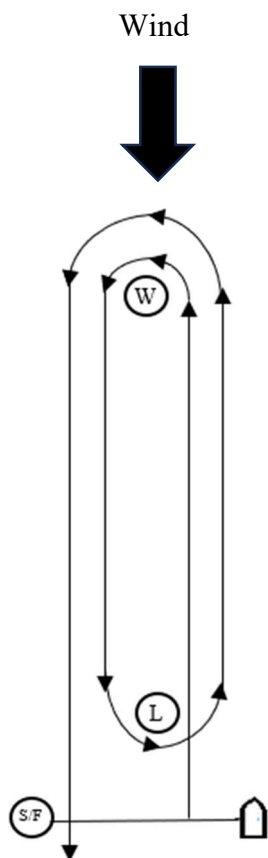
- 17.1 RRS 3 states: ‘The responsibility for a boat’s decision to participate in a race or to continue to race is hers alone.’ By participating in this event each competitor agrees and acknowledges that sailing is a potentially dangerous activity with inherent risks. These risks include strong winds and rough seas, sudden changes in weather, failure of equipment, boat handling errors, poor seamanship by other boats, loss of balance on an unstable platform and fatigue resulting in increased risk of injury. **Inherent in the sport of sailing is the risk of permanent, catastrophic injury or death by drowning, trauma, hypothermia or other causes.**
- 17.2 To the fullest extent permitted by law, participants waive any rights they may have to sue the race organizers (organizing authority, race committee, protest committee, host club, sponsors, or any other organization or official) involved with the event with respect to personal injury or property damage suffered by the participant or their crew as a result of participation in this event and release the race organizers from any liability for such injury or damage.

Appendix A – Course Descriptions

1 Course Board

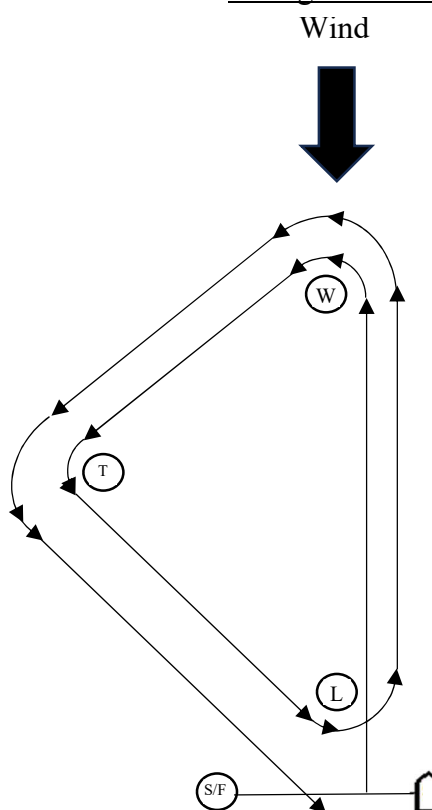
- 1.1 Race Committee will communicate course by a description posted on the starboard side of the Signal Boat.
- 1.2 For Windward/Leeward courses, the course description will have three parts: Fleet(s), windward mark, and number of laps. The lap count will be of the form “W<n>”, where “W” is a separator and <n> is the number of laps.
- 1.3 For Triangle courses, the course description will have four parts: Fleet(s), windward mark, and number of laps. The lap count will be of the form “T<n>”, where “T” is a separator and <n> is the number of laps.
- 1.4 For the pursuit race, marks will be listed in order of rounding, not including start and finish marks.
- 1.5 Rounding marks will be left to port unless otherwise specified. Starboard roundings will be indicated with an asterisk (*) after the mark name on course boards and written course listings.

Windward/Leeward Courses



Course L – Windward/Leeward, Leeward Finish	
L1	Start – W – Finish
L2	Start – W – L – W – Finish
L3	Start – W – L – W – L – W – Finish

Triangle Courses



Course T – Triangle	
T1	Start – W – T - Finish
L2	Start – W – T - W – T - Finish

Appendix B – Marks

1 SBYC Fixed Marks (including RCYC fixed marks)

- 1.1 SBYC fixed marks are white plastic cylinders, floating one to three feet high. They are labeled with the published mark names, readable from close distances. Some marks are in better condition than others. In general, the marks are hard to see from a distance. Local knowledge or a GPS will be necessary to find and round the correct marks.



1.2 Mark naming convention:

Traditionally, marks are named after the magnetic bearing from the S mark, dropping the least significant digit. For example, the mark at 150 degrees becomes Mark 15. The mark bearing 90 degrees is Mark 9.

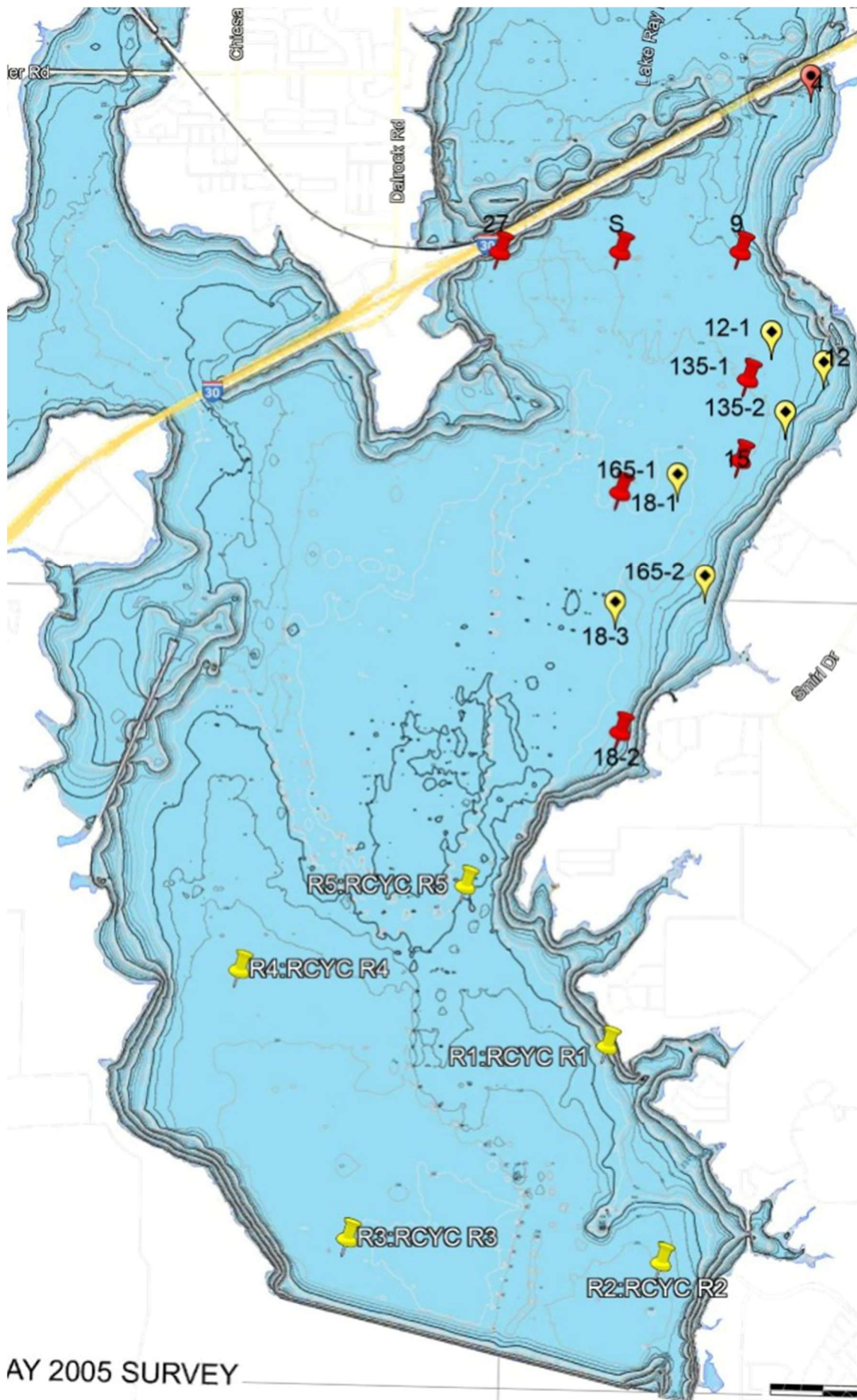
If there are two or more marks in the same direction, a suffix is added. For example, the first mark from S in the 180 degree direction is named Mark 18-1. Historically, the suffix also indicated the distance in nautical miles, but that may change.

The two-digit naming convention breaks down when the bearing is not a multiple of 10. Marks 135 and 165 require three digit names, since they bear 135 and 165 degrees, respectively.

Bring your binoculars to read the course board.

1.3 Map legend:

Red pins are fixed marks with SBYC buoys. The Orange teardrop (Dodie's Mark aka Mark 4) is fixed mark with Dodie's signage near The Harbor docks. Yellow teardrops are "virtual" marks with predefined locations which can be used during regattas with temporary marks. Yellow pins are Rush Creek Yacht Club marks.



AY 2005 SURVEY

2 SBYC Fixed Mark Locations

See SBYC website for latest, most accurate, mark location, in the form of GPX files. (<https://www.sbyc-tx.org/racing/racing-resources>)

From

To

Mark	Description	Latitude	Longitude	S	4	9	12-1	12-2	135-1	135-2	15	165-2	165-1	18-1	18-3	18-2	27	R1	R2	R3	R4	R5
S	Start(0)	32N 52.688	96W 30.018	-	050	090	120	120	135	135	150	165	165	180	180	180	270	181	178	195	208	194
				0	1.07	0.5	0.75	1	0.75	1	1.44	1	1	1	1.5	2	0.5	3.31	4.21	4.26	3.38	2.72
4	The Harbor(A)	32N 53.377	96W 29.05	230	-	204	189	177	193	184	191	192	199	206	200	197	242	192	188	202	213	204
				1.07	0	0.76	1.08	1.19	1.25	1.4	1.59	2.13	1.75	1.87	2.34	2.81	1.49	4.09	4.94	5.18	4.39	3.63
9	Chandlers-N(B)	32N 52.688	96W 29.423	270	024	-	158	144	177	164	180	185	194	207	198	194	270	190	185	202	215	203
				0.5	0.76	0	0.4	0.62	0.53	0.74	0.87	1.4	1	1.12	1.58	2.06	1	3.35	4.22	4.42	3.64	2.88
12-1	Chandlers-S 0.75m(C)	32N 52.313	96W 29.245	300	009	338	-	120	218	170	197	195	214	226	210	202	288	194	187	206	220	210
				0.75	1.08	0.4	0	0.25	0.2	0.34	0.51	1.05	0.71	0.9	1.3	1.75	1.21	3.02	3.86	4.14	3.44	2.61
12-2	Chandlers-S 1.0m(D)	32N 52.188	96W 28.988	300	357	324	300	-	265	217	225	209	233	240	221	210	290	198	191	209	225	215
				1	1.19	0.62	0.25	0	0.34	0.28	0.52	1.02	0.76	1	1.32	1.73	1.46	2.95	3.77	4.12	3.48	2.62
135-1	Wing 0.75m(E)	32N 52.158	96W 29.387	315	013	357	038	085	-	135	185	190	212	228	209	200	297	192	186	205	221	209
				0.75	1.25	0.53	0.2	0.34	0	0.25	0.34	0.87	0.51	0.71	1.11	1.56	1.16	2.84	3.7	3.95	3.24	2.41
135-2	Heath Inlet	32N 51.981	96W 29.177	1	1.4	0.74	0.34	0.26	0.25	0	0.26	0.76	0.52	0.76	1.06	1.47	1.4	2.71	3.54	3.87	3.23	2.36
15	Mahria Bay(G)	32N 51.823	96W 29.423	330	011	000	017	045	005	053	-	194	247	255	218	204	311	193	186	207	224	213
				1	1.59	0.87	0.51	0.52	0.34	0.26	0	0.54	0.26	0.52	0.81	1.24	1.33	2.5	3.36	3.63	2.97	2.11
165-2	Heath Inlet 1.44m(H)	32N 51.298	96W 29.575	345	012	005	015	029	010	026	014	-	345	316	254	211	328	193	184	209	231	219
				1.44	2.13	1.4	1.05	1.02	0.87	0.76	0.54	0	0.44	0.54	0.39	0.71	1.64	1.96	2.82	3.11	2.53	1.61
165-1	Heath Inlet 1.0m(J)	32N 51.723	96W 29.71	345	019	014	034	053	032	060	067	165	-	263	206	194	322	188	182	204	222	208
				000	026	027	046	060	048	068	075	136	083	0	0.26	0.59	1.07	1.23	2.36	3.24	3.44	2.74
18-1	South 1.0m(K)	32N 51.689	96W 30.018	1	1.87	1.12	0.9	1	0.71	0.76	0.51	0.52	0.26	0.44	0	0.5	1.12	2.31	3.21	3.31	2.54	1.76
				000	020	018	030	041	029	042	038	074	026	000	-	180	341	182	176	204	227	209
18-3	South 1.5m(L)	32N 51.189	96W 30.018	1.5	2.34	1.58	1.3	1.32	1.11	1.06	0.81	0.52	0.26	0.54	0	0.5	1.58	1.81	2.71	2.84	2.17	1.31
				000	017	014	022	030	020	029	024	031	014	000	000	-	346	182	176	208	238	225
18-2	South 2.0m(M)	32N 50.689	96W 30.018	2	2.81	2.06	1.75	1.73	1.56	1.47	1.24	0.71	1.07	1	0.5	0	2.06	1.31	2.21	2.39	1.87	0.91
				090	082	090	108	110	117	120	131	148	142	153	161	166	-	172	171	189	200	183
27	Sapphire Bay(N)	32N 52.688	96W 30.618	0.5	1.49	1	1.21	1.46	1.16	1.4	1.33	1.64	1.23	1.12	1.58	2.06	0	3.34	4.26	4.42	3.18	2.64
				001	012	010	014	018	016	016	013	013	008	001	002	002	352	-	166	233	282	319
R1	RCYC Club	32N 48.383	96W 30.063	3.31	4.09	3.35	3.02	2.95	2.84	2.71	2.5	1.96	2.36	2.31	1.81	1.31	3.34	0	0.93	1.34	1.56	0.89
				358	007	004	007	011	006	009	006	004	002	357	356	356	351	346	-	274	305	333
R2	RCYC Heath	32N 48.483	96W 29.817	4.21	4.94	4.22	3.66	3.77	3.7	3.54	3.36	2.82	3.24	3.21	2.71	2.21	4.26	0.93	0	1.31	2.13	1.77
				015	022	022	026	029	025	028	027	029	024	020	024	028	009	053	094	-	338	018
R3	RCYC Sunnyvale	32N 48.583	96W 31.367	4.26	5.18	4.42	4.14	4.12	3.95	3.87	3.63	3.11	3.44	3.31	2.84	2.39	4.16	1.34	1.31	0	1.2	1.55
				028	033	035	040	045	041	045	044	051	042	038	047	058	020	102	125	158	-	070
R4	RCYC Power Plant	32N 49.7	96W 31.9	3.38	4.39	3.64	3.44	3.49	3.24	3.23	2.97	2.53	2.74	2.54	2.17	1.87	3.18	1.56	2.13	1.2	0	1
				014	024	023	030	035	029	035	033	039	028	021	029	045	003	139	153	198	250	-
R5	RCYC Terry Point	32N 50.05	96W 30.763	2.72	3.63	2.88	2.61	2.62	2.41	2.36	2.11	1.61	1.9	1.76	1.31	0.91	2.64	0.89	1.77	1.55	1	0

Distances are in nautical miles
Note: Mark A is a red, round buoy off of The Harbor docks. Coordinates for Mark A are approximate.

Appendix C – Pursuit Courses

The Afternoon Challenge Pursuit Race will begin and end at a start-finish line near SBYC Mark 27. All boats will start and finish between fixed marks defining the line. Start times will be published the day of the race, with the highest handicap beginning as close to 1pm as possible. The Race Committee will post the start time of the highest handicap boat. Sailors can determine their start time by adding their reference time to the first start. As a courtesy, prior to the race, the Race Committee will hail on channel 71 the start time for each boat. Failure to receive a transmission will not be grounds for redress.

1 Afternoon Short Challenge Pursuit Course

Course: 18-1 : 15 : 9* : Dodie's Mark (4) (marks with * are starboard roundings)

Distance: 4.56 nm



2 Afternoon Medium Challenge Pursuit Course

Course: 18-1 : 15 : 9* : Dodie's Mark (4) : S : 9: Dodie's Mark (4) (marks with * are starboard roundings)

Distance: 6.72 nm



3 Afternoon Long Challenge Pursuit Course

Course: 18-1*: R4: R5: 15: 9*: 4 (marks with * are starboard roundings)

Distance 9.69 nm

