



2025 Texas Corinthian Yacht Club Offshore Regatta

September 20 – 21, 2025

**Organizing Authority: Texas Corinthian Yacht Club
104 Park Circle Kemah TX 77565**

SAILING INSTRUCTIONS

The notation '[DP]' in a rule in the Sailing Instructions (SI) means that the penalty for a breach of a rule may, at the discretion of the protest committee, be less than disqualification.

1. RULES

1.1 The regatta will be governed by the rules as defined in The Racing Rules of Sailing (RRS).

1.2 Between dusk and dawn the rules of Part 2 of the RRS (When Boats Meet) are replaced by the International Regulations for Preventing Collisions at Sea 1972 (COLREGs).

1.3 Racing Rules are changed as follows:

1.3.1 The "Starting Window" is a 90-minute period of time during which competitors are to start their race. The Race Committee will capture individual start times and apply a handicap to determine the corrected elapsed time and order of finish. This changes the definition of Start, RRS 26 and...

1.3.2 SI 8.3 changes RRS 32

1.3.3 SI 8.4 changes RRS 33

1.3.4 SI 8.3 changes RRS 33

1.3.5 SI 8.4 changes RRS 33

1.3.6 SI 11.3 changes RRS A4 and A5

1.3.7 SI 15.2 changes RRS 35, A4 and A5

1.3.8 SI 17.3 changes RRS 60.1(b), 62.1(a), and 63.5

1.3.9 SI 18.4 changes RRS 42

1.3.10 SI 18.5 changes RRS A5 and 63.1

2. NOTICES TO COMPETITORS

2.1 Notices to competitors will be posted on the official notice board located online on the News & Notices menu. <https://www.regattanetwork.com/event/30270>. Notices shall also be communicated via cell phone to each individual competitor at the number listed on their registration.

3. CHANGES TO SAILING INSTRUCTIONS

3.1 Any written change to the sailing instructions will be posted before 0900 hours on the day it will take effect, except that any change to the schedule of races will be posted by 2000 hours on the day before it will take effect.

3.2 Oral changes to the sailing instructions may be given on the water by hail via VHF in accordance with RRS 90.2(c). **IF** oral changes are to be announced, they will be communicated by VHF directly to each boat at the starting area.

4. SIGNALS MADE ASHORE

4.1 N/A

5. SCHEDULE OF RACES

5.1 Dates of racing: Saturday, 20 September to Sunday 21 September

5.2 Number of races: 1

5.3 The starting window opens at 10:00:00 and closes at 11:30:00.

6. CLASS FLAGS and ORDER OF START

6.1 This will be a window start (see 1.3.1 above). There are no class flags, starting signals, nor specific starting order. Competitors may cross the starting line (9.1) at any time at or after 10:00:00 until no later than 11:30:00. The start time for each competitor will begin as they cross the starting line (GPS time).

7. RACING AREAS

7.1 Attachment 1 shows the location of the racing area.

8. THE COURSES

8.1 Courses for each class will be announced by VHF prior to the opening of the starting window, which could include a modification of the Attachment 2 courses listed, if required.

8.2 The diagrams in Attachment 2 show the courses, including the approximate angles and distances between legs, the order in which marks are to be passed, and the side on which each mark is to be left.

8.3 Courses will not be shortened after the starting window opens. This changes RRS 32.

8.4 Legs of the course will not be changed after the starting window opens. This changes RRS 33.

9. MARKS

9.1 Starting and Finishing Marks will be Houston Ship Channel Mark 11 (HSC11), G "11" Fl G 2.5s and an orange tarp on the official signal vehicle located on the shore of Galveston Island to the South.

9.2 Rounding mark locations are listed in a table in Attachment 1.

- 9.3 Available photographs of certain marks are attached to these sailing instructions in Attachment 3.
- 9.4 In the event a mark is missing, boats shall round the GPS coordinates provided. Upon arrival at the missing mark, all boats should photograph the Coordinate Readout on their GPS and provide same to the race Committee as evidence that they did, indeed, clear the mark. Please send photo to billvanrav@gmail.com or text to 832.428.0785.

10. AREAS THAT ARE OBSTRUCTIONS

10.1 N/A

11. THE START

- 11.1 The start will be as defined in 1.3.1, 5.3, and 6.1
- 11.2 The Starting Line is a line between Galveston Channel Green Marker #11 and an orange tarp located on the southern shoreline, approximately 1,100 yards distance, and at a bearing of approximately 205 degrees (Magnetic) from HSC Green Marker #11. CAUTION: Boats are advised to stay well clear of the shoreline to avoid shoal water!
- 11.3 A boat that does not start within the time interval listed in 5.3 will be scored Did Not Start without a hearing. This changes RRS A4 and A5.

12. CHANGE OF THE NEXT LEG OF THE COURSE

N/A

13. THE FINISH

- 13.1 The finishing line will be a line between Galveston Channel Green Marker #11 and an orange tarp located on the official signal vehicle parked on the Southern shoreline, approximately 1,100 yards distance, and at a bearing of approximately 205 degrees (Magnetic) from HSC Green Marker #11. **Caution: Boats are advised to stay well clear of the shoreline to avoid shoal water!**
- 13.2 Boats shall attempt to hail the Race Committee via VHF when within approximately ONE-HALF MILE OF THE FINISH identifying the boat by name and sail number.
- 13.3 Boats shall attempt to hail the Race Committee again via VHF when preparing to cross the finishing line, identifying the boat by name and sail number. Boats crossing the finish line at night shall display a light on their mainsail number.
- 13.4 13.4 If the Race Committee is absent or does not acknowledge when a boat finishes, she shall record her finish time as follows: Finish time shall be marked when Galveston Channel Marker Green Marker #11 is at a compass bearing of 025 degrees (Magnetic) from the vessel's helm. GPS time shall be used. She shall report her finishing time and her position in relation to any nearby boats to the race committee at the first reasonable opportunity. This may be done by contacting the Race Committee no later than 02:30 hours, Sunday September 21. The information will be transmitted by email to billvanrav@gmail.com or by text or voice recording to 832.428.0785.

14. PENALTY SYSTEM

- 14.1 A boat that takes any penalty under RRS 44.2 shall notify the Race Committee at the first reasonable opportunity after finishing, identifying the location, time, and name of any other boat involved in the incident. Racers are reminded of rule 44.1.b

15. TIME LIMITS AND TARGET TIMES

- 15.1 Time limit is as follows:

Time Limit Expired
02:00 hours, September 21

- 15.2 Boats failing to finish within the time limit will be scored Did Not Finish without a hearing. This changes RRS 35, A4 and A5.

16. PROTESTS AND REQUESTS FOR REDRESS

- 16.1 Boats intending to file a protest shall inform the race committee via VHF within 30 minutes of that boat's finishing time by email (billvanrav@gmail.com) or by text to (832) 428-0785.
- 16.2 Blank protest forms are attached to these sailing instructions, or the form is available on the US Sailing app. Please send a picture of the form by email billvanrav@gmail.com or by text to 832.428.0785.
- 16.3 The protest form notice delivery time limit is September 21, 10:00.
- 16.4 Notices of scheduled hearing times and locations will be posted within thirty (30) minutes of the expiration of the protest time limit to inform competitors of hearings in which they are parties or named as witnesses.
- 16.5 Notices of protests or redress requests by the race committee or protest committee will be posted to inform boats under RRS 61.1(b) and (c).
- 16.6 N/A

17. SCORING

- 17.1 Boats in ORC Class will be scored using time-on-time (TOT) scoring.
- 17.2 The ORC TOT scoring option will be selected by the race committee after the race, based on actual weather data collected on the course (provided by our official weather provider Weather Routing Incorporated (WRI)). The factor will be either the Triple Number Windward/Leeward (low/medium/high) or the Triple Number All Purpose (low/medium/high). This supersedes the NOR.
- 17.3 The decision regarding the ORC parameter selected is not subject to a request for redress. This changes RRS 60.1(b), 62.1(a), and 63.5.
- 17.4 Other classes will be scored using TOD scoring
- 17.5 The low point system shall be used as described in RRS A4

18. SAFETY REGULATIONS

- 18.1 Check In – Boats shall check in with the Race Committee on VHF Channel 68 prior to her chosen start time. Boats checking in shall report the number of souls aboard. [DP]
- 18.2 A boat retiring from the race shall notify the Race Committee at the earliest opportunity, **and then again** when passing the finish line on returning to port. In both cases, retiring boats shall first attempt to notify the Race Committee via VHF Channel 68. Failing that, a retiring boat shall attempt to notify a competitor on the course for subsequent relay to the Race Committee. A retiring offshore boat shall also notify the Race Committee at cell number (832) 428-0785. [DP]
- 18.3 A boat's failure to check in is not subject to protest by another boat.
- 18.4 If a skipper determines that it is necessary to use the boat's motor to manoeuvre in order to avoid interfering with a ship's safe passage, he or she may do so. However, when motoring, the boat may not advance position and may only use the motoring for clearing the ship passage lane. Once cleared, the boat shall immediately cease motoring. This changes RRS 42. As soon as practical, the skipper shall advise the Race Committee of any action taken in accordance with this rule.
- 18.5 **Interfering With Commercial Traffic:** A boat is subject to immediate disqualification, without a hearing, if the Race Committee receives a report from a disinterested party that the boat interfered with commercial traffic while transiting to the race area, while *racing*, or while transiting to her mooring after *finishing*. This modifies RRS A5 and 63.1.

19. REPLACEMENT OF CREW OR EQUIPMENT

- 19.1 All new crew must have submitted the required waiver of liability.

20. EQUIPMENT AND MEASUREMENT CHECKS

N/A

21. EVENT ADVERTISING

Competitor advertising is welcome [DP]

22. OFFICIAL BOATS

N/A

23. SUPPORT BOATS

N/A

24. TRASH DISPOSAL

Trash shall be disposed of in accordance with applicable laws.

25. HAUL-OUT RESTRICTIONS

N/A

26. DIVING EQUIPMENT AND PLASTIC POOLS

N/A

27. RADIO COMMUNICATION

The Race Committee will use VHF Channel 68 to communicate with racers. Except when communicating with the Race Committee on VHF Channel 68 as provided for in these Sailing Instructions, all boats should monitor VHF Channel 16. When near the Houston Ship Channel, please monitor VHF Channel 13.

28. PRIZES

28.1 Potential prizes will be:

28.1.1 PHRF Spinnaker 1st Place

28.1.2 PHRF Non-Spinnaker 1st Place

28.1.3 TOMA Multihull 1st place

29. DISCLAIMER OF LIABILITY

Competitors participate in the regatta entirely at their own risk. See RRS 4, Decision to Race. The organizing authority will not accept any liability for material damage or personal injury or death sustained in conjunction with or prior to, during, or after the regatta.

30. INSURANCE

Each participating boat shall be insured with valid third-party liability insurance with a minimum cover of \$300,000 per incident or the equivalent.

31. ATTACHMENTS:

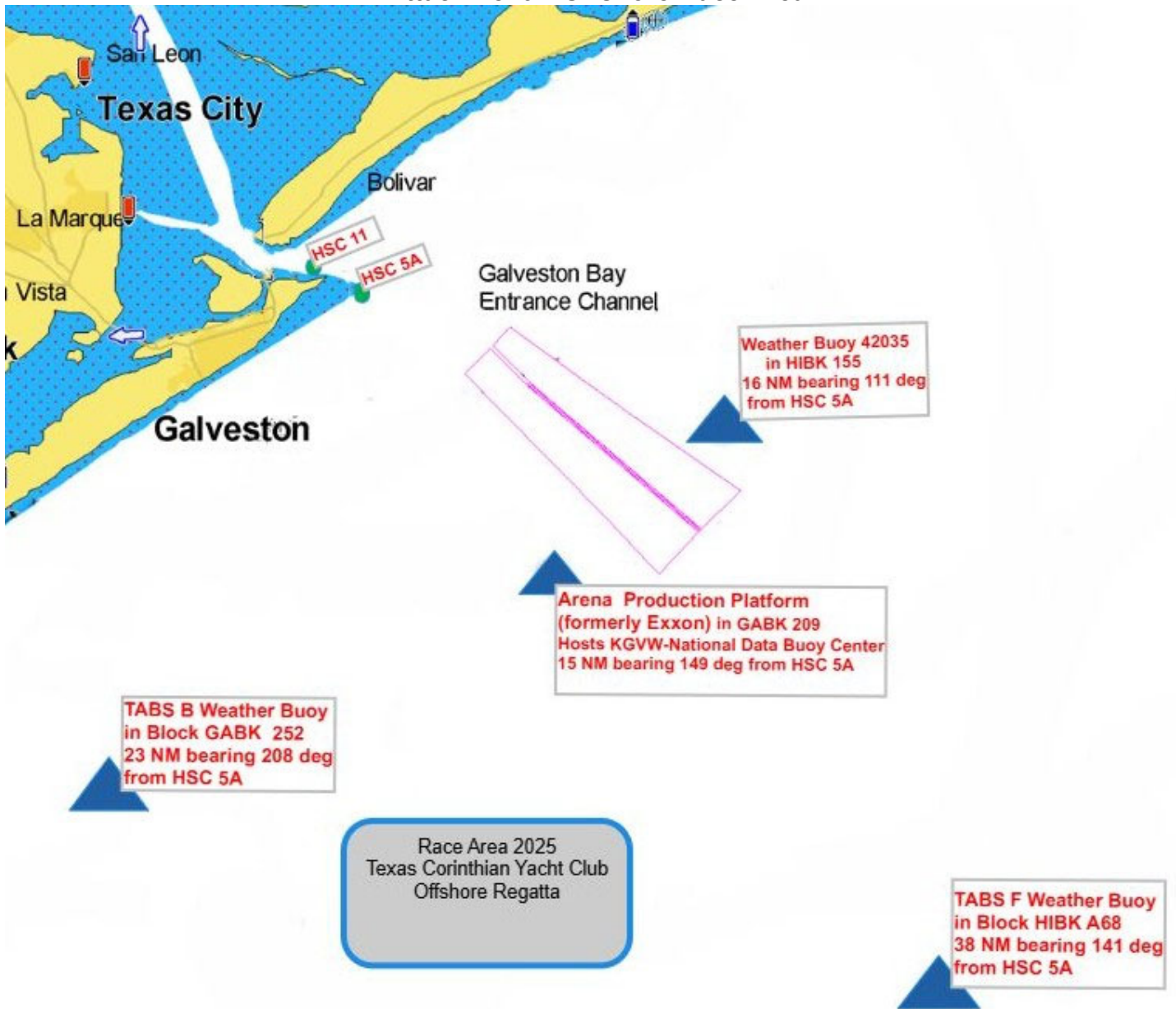
Race Area & Mark Locations

Courses

Available Mark Photos

Protest Form



Attachment : Offshore Race Area

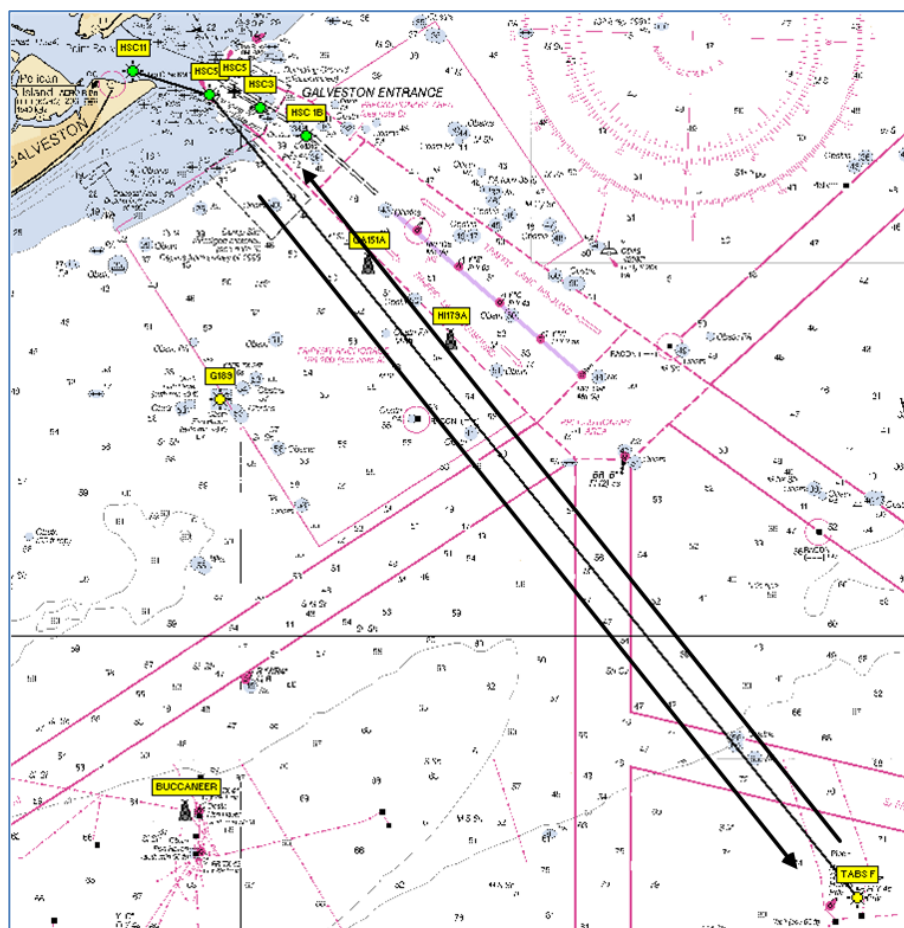


Offshore Mark Locations



Designation	Latitude	Longitude
HSC 11 (G "11" Fl G 2.5s)	29° 20.530'N	094° 44.470'W
HSC 5A (Iso G 6s 30ft 6M "5A" Ra Ref)	29° 19.642'N	094° 41.275'W
Weather Buoy 42035 HIBK 155	29° 12.900'N	094° 25.740'W
TABS B (Y "B" Y 4s Priv) GABK 252	28° 58.939'N	094° 53.944'W
TABS F (Y "F" Y 4s Priv) HIBK A68	28° 50.550'N	094° 14.496'W
Galveston GABK 209 Arena Offshore Platform	29° 7.480'N	094° 33.000 'W
Marks are referenced by their highlighted name		

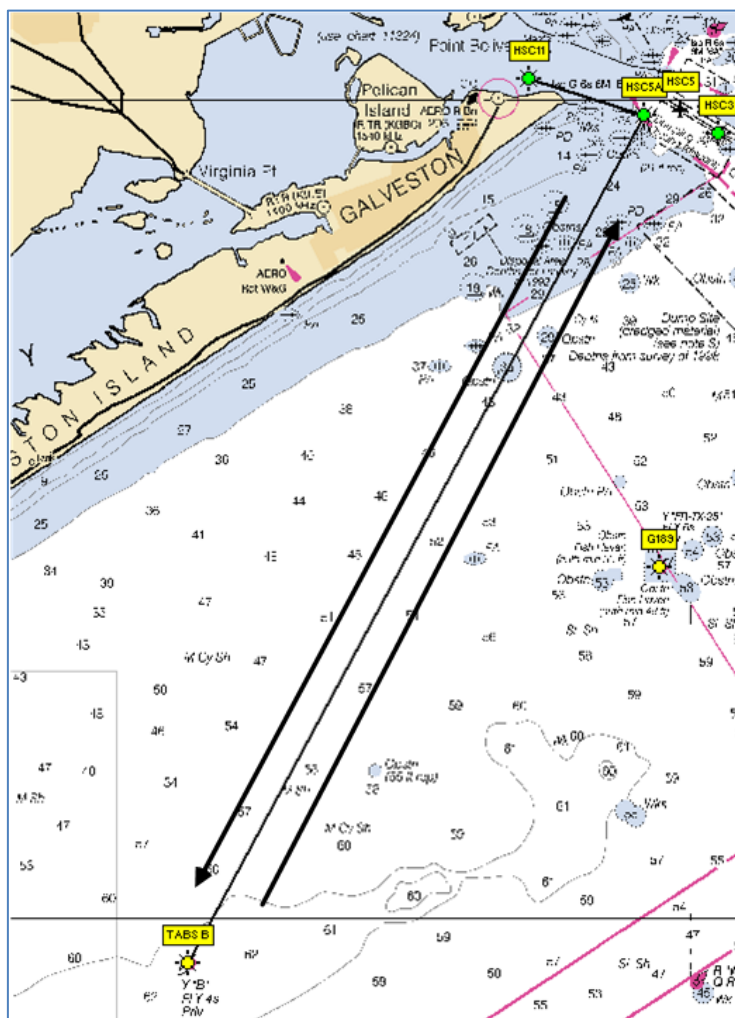
Attachment 2 Offshore Courses

Course	<div>“1 Red”</div> 	<div>“1 Green”</div> 			
	Leave to:	Leave to:	Bearing (Magnetic)	Leg Distance(NM)	Total Distance(NM)
Start (HSC 11)	Port	Port	--	--	--
HSC 5A	Starboard	Starboard	105	2.93	2.93
TABS F	Port	Starboard	139	37.35	40.28
HSC 5A	Port	Port	319	37.35	77.63
Finish (HSC 11)	Starboard	Starboard	285	2.93	80.56










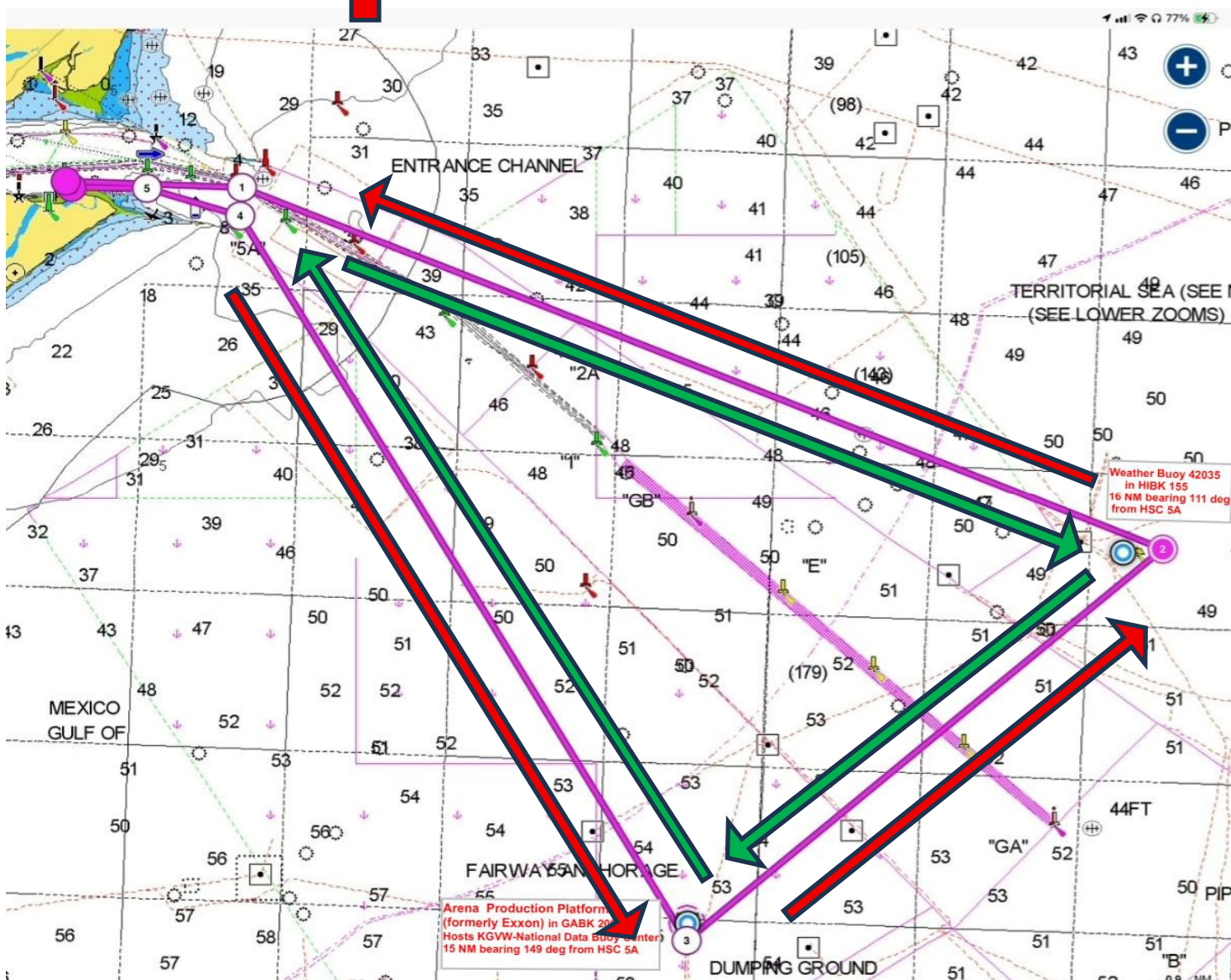
Attachment 2 Offshore Courses

Course	"2 Red" 	"2 Green" 			
	Leave to:	Leave to:	Bearing (Magnetic)	Leg Distance(NM)	Total Distance(NM)
Start (HSC 11)	Port	Port	--	--	--
HSC 5A	Starboard	Starboard	105	2.93	2.93
TABS B	Port	Starboard	206	23.46	26.39
HSC 5A	Port	Port	26	23.46	49.85
Finish (HSC11)	Starboard	Starboard	285	2.93	52.78



Attachment 2 Offshore Courses

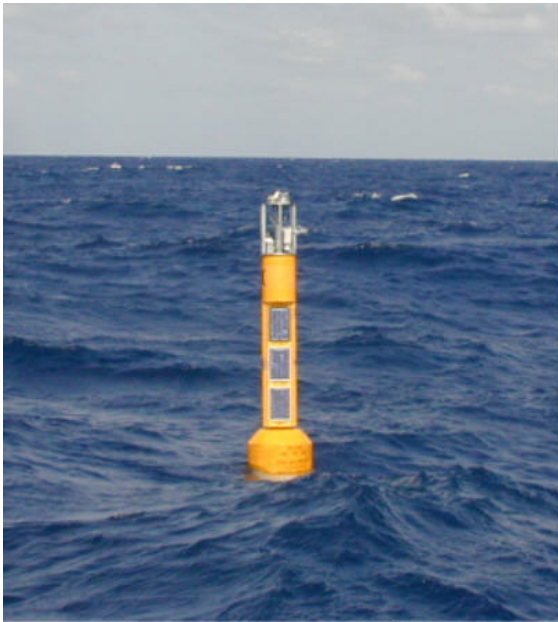
Course 46 NM	"3 Red"	"3 Red"	"3 Red"	"3 Green"	"3 Green"	"3 Green"
						
	Leave to:	Bearing Magnetic	Leg Distance NM	Leave to: 	Bearing (Magnetic)	Leg Distance (NM)
Start / Finish (HSC 11)	Starboard	285	3	Port	--	--
HSC 5A	Port	291	16	Starboard	105	3
Weather Buoy 42035	Port	48	9.7	Starboard	148	14
Arena	Port	148	14	Starboard	48	9.7
HSC 5A	Starboard	105	3	Port	291	16
Start / Finish (HSC11)	Port	-	-	Starboard	285	3



Attachment 2 Offshore Courses

TABS B

https://www.ndbc.noaa.gov/station_page.php?station=42043



Flashing Yellow- 4 Second labeled "B"

TABS F

https://www.ndbc.noaa.gov/station_page.php?station=42050



Flashing Yellow 4 Second labeled "F"

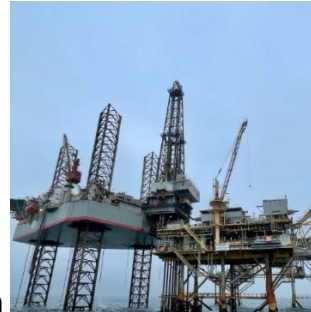
Note: There is a Quick Flashing Red light ~1nm to WSW with a horn



Weather Buoy 42035

https://www.ndbc.noaa.gov/station_realtime.php?station=42035

Galveston GABK 209 Arena Offshore
[Offshore Oil Operations | Arena Offshore](#)



Platform

(Formerly Exxon)

PROTEST FORM
HEARING REQUEST
 for protests, requests for
 redress, and reopening

FOR COMMITTEE USE

Time & date received _____ Rec'd by _____

Protest time limit _____ Filing # _____

Race # Day/Date of Race

Event/Series

--	--	--

Type of Hearing

☐ Protest☐ Redress☐ Reopening**Boat or Committee Protesting or Requesting**Making allegation, claim, or requestBoat (sail # / name)

-OR- Committee

Represented by

Mobile

Email

Protestee(s) or Committee/Body

Alleged to have broken a rule, or made an improper action or omission

Boat (sail # / name)Boat (sail # / name)Boat (sail # / name)Boat (sail # / name)

-OR- Committee/Body

For a protest only, informing the protestee How did you inform the other boat of your intent to protest?

If "Yes" when (for each)?

By hailing?

☐ No ☐ Yes

By displaying a red flag?

☐ No ☐ Yes

Some other way?

☐ No ☐ Yes

Words used?

Where / how?

The incident

For a protest: When and where did it happen? (e.g. 1/2 way along first upwind leg, pre-start just below pin, etc.)

For protests, please describe the incident. For redress or reopening, please state the reasons.

--

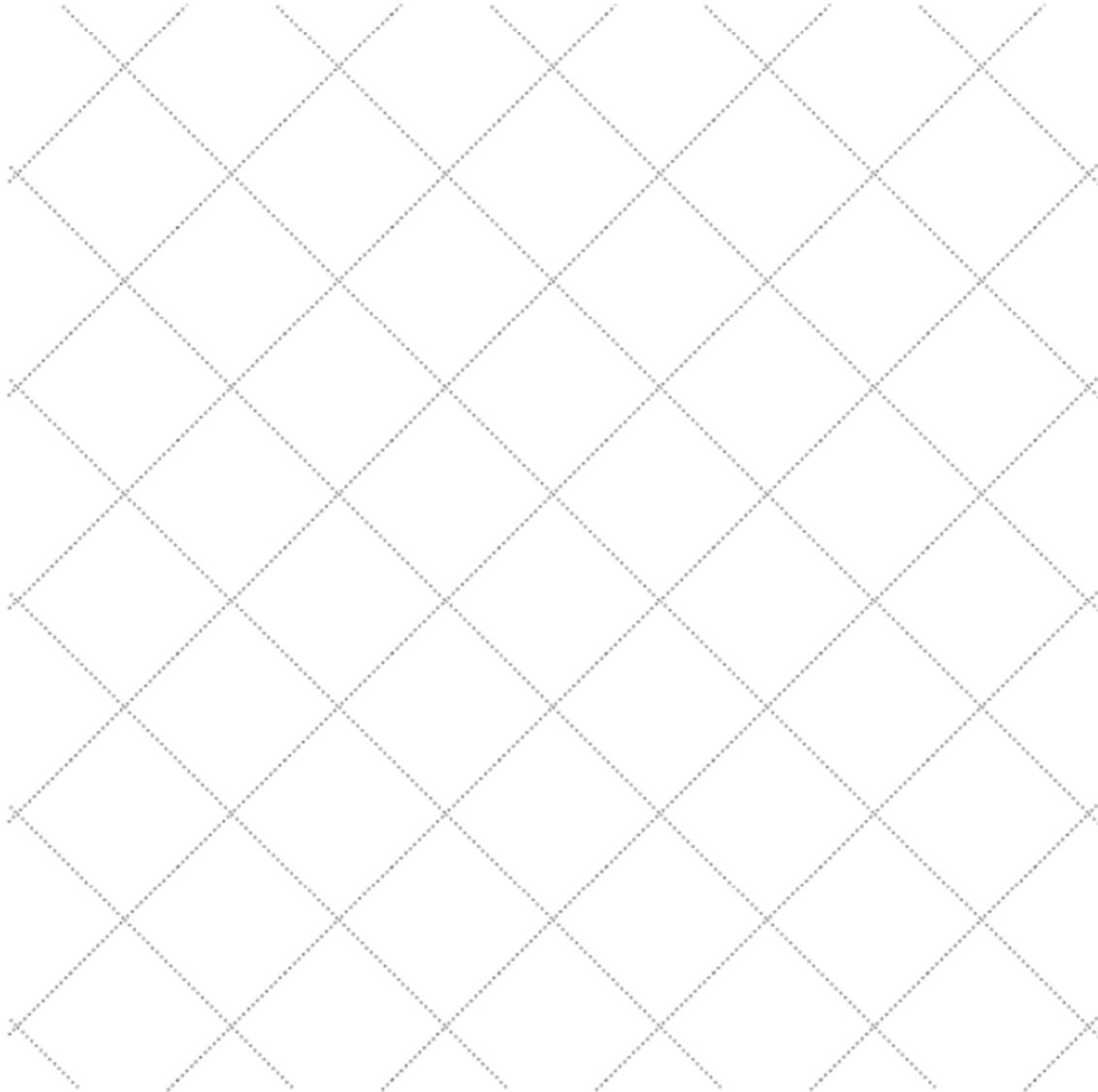
Rules alleged to have been broken

--



For either a protest or a request for redress or reopening (if relevant)

Diagram Include wind and current (or continue the description of the incident and/or reasons)



Witnesses Please list by name

--

USE ONLY TO WITHDRAW FILING

I request to withdraw this filing

Signature of representative

Filing withdrawal approved

Signature of PC member

Print name

Print name