

# SAILING INSTRUCTIONS

## MDR Dinghy Fleet Championship

### Saturday, September 6, 2025

**RULES:** The regatta will be governed by the rules as defined in the RRS 2025-2029.

**REGISTRATION/ELIGIBILITY:** All boats must be registered prior to checking in, and must clearly display the sail number that matches their registration. Boats without legible or registered sail numbers will not be scored.

**SKIPPERS' MEETING:** There will be no skipper's meeting.

**NOTICES TO COMPETITORS:** Notices will be made verbally on the water.

**SCHEDULE OF RACES:** At least five (5) races are scheduled. The Race committee may elect to run fewer races. The first race will start at 1300 hours. Subsequent races will be started as soon as is practical.

**RACING AREA:** Racing will be inside the Marina del Rey harbor between the "No Sail" lanes of the outer entrance channel. The "No Sail" areas shall be considered a continuing obstruction with the boundary of the obstruction demarcated by a line between two adjacent no sail buoys.

**CHECK IN:** Check in with the Race Committee on the race course at your earliest convenience.

**MARKS:** Marks will be yellow cylinders, red balls or hippity-hops. Mark positions are approximate and may be adjusted in these Sailing Instructions.

**PENALITIES:** Appendix V1 is in force (**One-turn penalty** except when the incident occurs in the zone around a mark or at an obstruction, unless otherwise specified in the RRS)

**ORDER OF STARTS:** The RC will determine the order of starts on the water and may change the order at its discretion.

**CLASS FLAGS:** For each class's starting sequence, the class flag of the fleet scheduled to start next will be displayed from the warning signal until the starting signal. Any additional class flags will be announced verbally by the Race Committee on the water.

**STARTING SYSTEM:** Appendix S "Sound Signal Starting System" will be used. The **Start Signal** for each class will serve as the **Warning Signal** for the next class. (This is a rolling 2-minute start.)

**COURSES:** The selected course for each race will be indicated by a pennant flown along with the class flag during the start sequence. The course may change for each fleet. Courses will be selected from the **2025 Sunstroke Series course chart** shown below.

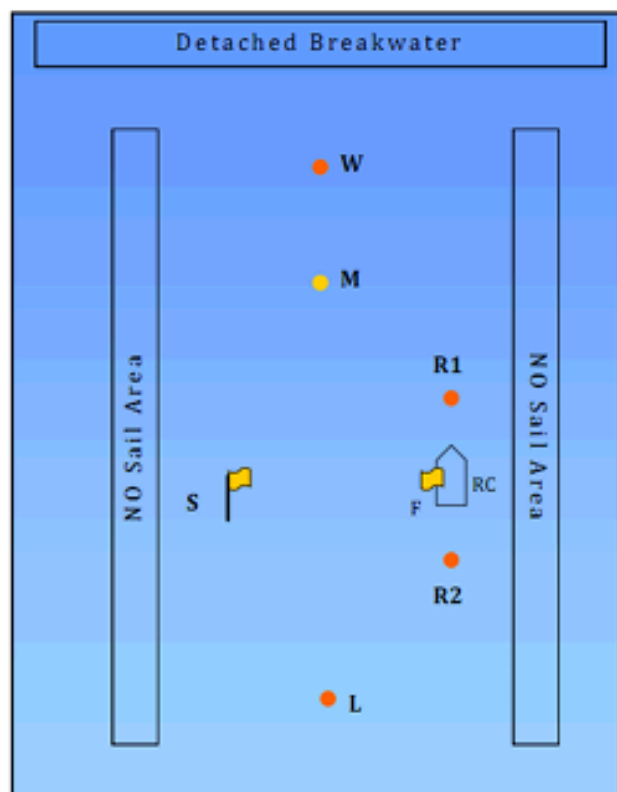
**CLOSED START/FINISH LINE:** For certain courses (see course chart), the Start/Finish line, including the committee boat and the pin, shall be considered an obstruction for boats that are not starting or finishing. A boat that sails through the line or makes contact with the committee boat or pin when not starting or finishing shall do two penalty turns and may **NOT** correct the error by retracing her course. If a boat gains an advantage despite taking penalty turns, the RC may disqualify her without a hearing.

**PROTESTS:** Competitors wishing to file a protest shall notify the Race Committee of their intent to file as soon as possible. Forms must be filed within one hour of the RC's return to the Club. Appendix T Section C "Expedited Hearings" is in force.

**SCORING:** Appendix A - Low Point Scoring System, shall apply. One completed race constitutes a series. There will be one throw out if five races are completed.



## 2025 Sunstroke Series Course Chart #10



R1, R2, W, M and L are red, yellow or orange balls or cylinders. S is an orange flag on a staff. All marks are to be left to port unless designated by a lowercase "s". F is an orange flag on the committee boat. The RC may only set one of the R marks each night

\*Start line is restricted for course 2, 21, 2D, 3, and 4, boats racing those courses shall not cross between RC and S unless starting or finishing. Boats breaking this rule are subject to penalty from the RC without a hearing

#	Description	Pennants
1	Start > W > Finish	
11	Start > M > Finish	
2	Start > W > L > Finish*	
21	Start > M > L > Finish*	
2D	Start > L > W > Finish*	
3	Start > W > L > M > Finish*	
4	Start > W > L > M > L > Finish*	
5	Start > Ws > R1s > S > L > Finish	
51	Start > Ms > R1s > S > L > Finish	
6	Start > W > S > R2s > L > Finish	
61	Start > M > S > R2s > L > Finish	
7	Start > W > M > W > Finish	
8	Start > W > R1 > W > Finish	
9	Start > W > S > W > Finish	