



## SAILING INSTRUCTIONS 2025 TWO HARBOR FALL SERIES

Organizing Authorities: Pierpont Bay Yacht Club and Anacapa Yacht Club.

**1. RULES:** This race will be governed by the “rules” as defined in the *Racing Rules of Sailing*. For PHRF boats the event is designated US Nearshore as specified in the US Safety Equipment Regulations (USER). In the event that the course calls for rounding the Hueneme buoy, boats in the vicinity of the Hueneme buoy shall give way to commercial ships and navy vessels entering or leaving the Port of Hueneme. This race is designated as a PHRF Random Leg race.

**2. ENTRIES:** Eligible boats may be entered by completing registration via Regatta Network through the following links: For the Series or Race #1: <https://regattanetwork.com/event/30404> If you wish to enter only Race #2, the link is <https://regattanetwork.com/event/30405> If you wish to enter only Race #3, the link is <https://regattanetwork.com/event/30411> There will be no Skippers Meeting. Entries for the Series or race close at 1700 on the Friday preceding each race. Non-spinnaker class entrants without a PHRF rating will be assigned a temporary rating for this race only by the race management team. Regardless of class, PHRF-rated boats are required to have a current PHRF rating in order to be eligible to win series trophies.

**3. NOTICES TO COMPETITORS:** Notices to competitors will be posted via email &/or the Regatta Network link before 0900 hours on the day they will take effect. This includes class breaks.

**4. CHANGES IN SAILING INSTRUCTIONS:** Changes in the Sailing Instructions will be posted via email &/or the Regatta Network link before 0900 hours on the day they will take effect.

**5. SCHEDULE OF RACES:** The start signal for the first class is scheduled for 1130 hours on each race day. There will be no skippers meeting. Races are scheduled as follows:

- Race #1: Saturday, October 4 hosted by PBYC
- Race #2: Saturday, October 25 hosted by AnYC
- Race #3: Saturday, November 8 hosted by PBYC

### 6. CLASSES:

- 6.1 There will be PHRF-rated Spinnaker and Non-spinnaker classes with class breaks determined by entries, and an ORCA-rated class. Other classes may also be formed at the discretion of the Race Committee. Class breaks will be posted via email &/or the Regatta Network link after entries close the Friday preceding each race.
- 6.2 Class Flags: Class flags will be solid color as described below:

Class	Flag
A	Red
B	Green
C	Yellow
D	White
E	Blue

- 6.3 Check-in: All boats shall check in with the Race Committee by radio (VHF channel 69) prior to their start.

### 7. THE COURSES:

- 7.1 The courses will be chosen from the 2025 Two Harbor Fall Series Course Chart, which is hereby made part of these Sailing Instructions.
- 7.2 The approximate compass bearing from the starting line to the first mark is indicated on the 2025 Two Harbor Fall Series Course Chart.
- 7.3 Designation of the course to be sailed will be signaled from the race committee boat before or with the warning signal for the first starting class. For succeeding classes, the

course signal will be displayed with or as soon as practicable following the warning signal for that class. This changes Rule 27.1.

- 7.4 When an oil platform is a mark of the course, its associated mooring buoy(s) are marks of the course. Such buoys are to be passed on the same side as the oil platform is to be passed.

## **8. THE START:**

- 8.1 The races will be started using Rule 26. The order of starts will be posted via email &/or the Regatta Network link after entries close the Friday preceding each race. The RC will attempt to start the classes with no delay between the start of one class and the warning for the next class (rolling sequence).
- 8.2 The starting line will be located between the course side of a permanent mark offshore from the Mandalay Power Plant as the port-side mark, and an orange flag or shape displayed on the Committee Boat as the starboard-side mark.
- 8.3 Boats whose warning signal has not been made shall keep clear of the starting area and of all boats whose warning signal has been made.

## **9. RECALLS:**

- 9.1 Individual recalls will be signaled in accordance with Racing Rule 29.1 [code flag "X" and 1 sound signal].
- 9.2 General recalls will be signaled in accordance with Racing Rule 29.2 [code flag "first substitute" and 2 sound signals].
- 9.3 When a general recall has been signaled, the starts for the succeeding classes shall follow the new start for the recalled class.

- 10. THE FINISH:** The finish shall be on a line between a permanent mark offshore from the Mandalay Power Plant and the stack of the power plant. The stack bears 57° M from the mark. All racers shall record the time that their bow crossed this line. All boats shall finish within 3 boat lengths of the mark **and may cross in either direction**. The finish time shall be reported to the RC.

- 11. RETIREMENT:** A boat that has started and subsequently retires shall notify the RC as soon as possible. The RC will monitor VHF channel 69. Contact phone numbers are as follows:

PBYC club: (805) 644-6672; PBYC PRO: Richard Countess (805) 444-0223, rcountess@aol.com.

AnYC PRO: Dan DeCesare, phone: 805-666-0048; email: djdecesare@gmail.com.

- 12. PROTESTS:** Protests shall be prepared on forms available online [https://www.ussailing.org/wp-content/uploads/2022/01/US\\_Sailing\\_Hearing\\_Request\\_Form\\_20210301\\_Fillable.pdf](https://www.ussailing.org/wp-content/uploads/2022/01/US_Sailing_Hearing_Request_Form_20210301_Fillable.pdf)

or via the RRS app and emailed to rcountess@aol.com within 2 hours of the finish of the protesting boat or within 2 hours of her return to harbor if she retires. A boat planning to protest another boat shall notify the race committee immediately upon finishing or as soon as possible if she retires. The protest committee may hear protests via Zoom teleconference. The Zoom link will be communicated to protestor and protestee.

- 14. SCORING:** The Low-Point Scoring System (RRS Appendix A) will apply. Three races are scheduled for the series. There are no throw-outs. This changes RRS A2.

- 15. SAFETY EQUIPMENT:** All boats shall carry the safety equipment specified by the U.S. Safety Equipment Requirements for Nearshore Races. In addition, lifeline requirements 2.4.1 – 2.4.8 apply with the exception that coated lifelines are permitted. Racers are reminded that they are bound by the International Regulations for Preventing Collisions at Sea when encountering vessels that are not racing. All boats regardless of class shall carry a VHF radio capable of transmitting and receiving on channels 16 and 69.

## **16. NON-SPINNAKER CLASS DEFINITIONS:**

- 16.1 No spinnakers or spinnaker-like sails such as flashers, cruising 'chutes, MPSs, gennakers, etc. are allowed. All headsails must meet the measurements of Racing Rule 50.4.

- 16.2 Only one spinnaker pole or whisker pole may be used at a time and, when in use, shall be attached to the foremost mast.
- 16.3 Use of headsails larger than 155% LP carries a 6 second per mile penalty unless the boat is already handicapped for such larger sail.
- 16.4 More than one headsail may be carried set, and the headsails need not be attached to the forestay.

**17. TROPHIES:** Series trophies will be awarded after the last race at PBYC. Boats must be registered for the series prior to the start of the second race to be eligible for series trophies. The number of series trophies awarded will be as follows:

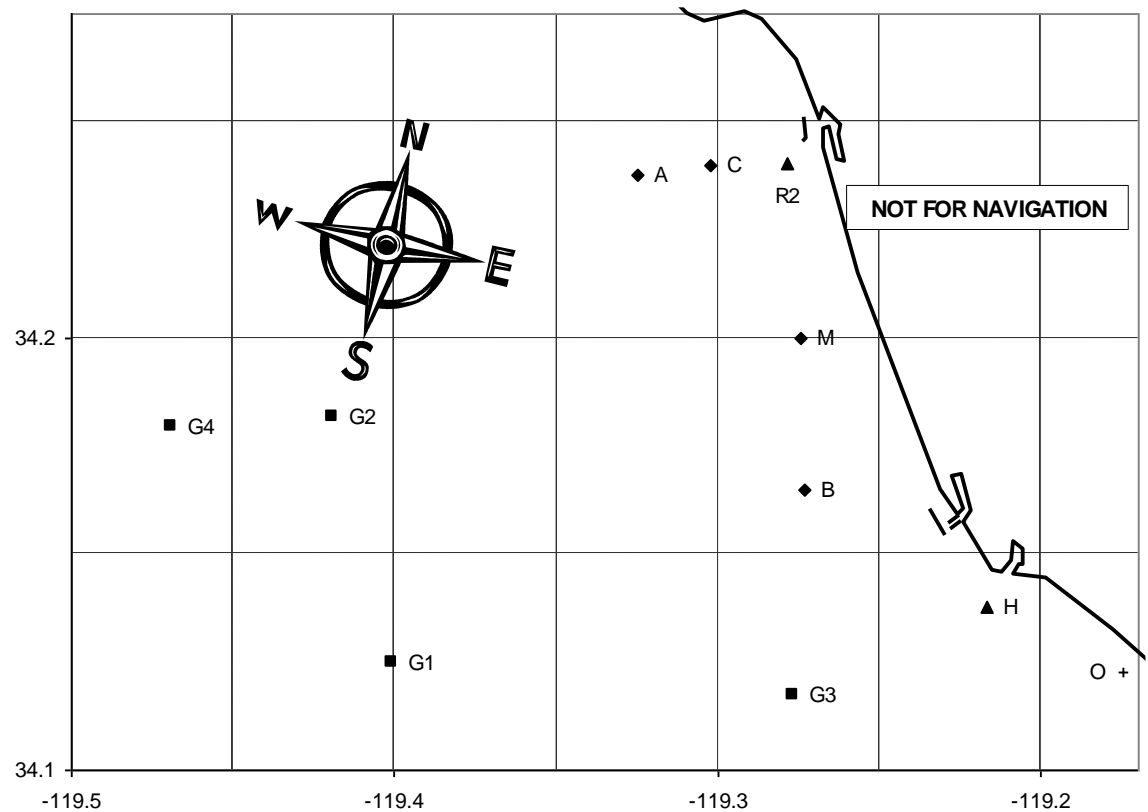
<u>Number of Boats in the Class</u>	<u>Trophies</u>
1-3	1 <sup>st</sup> Place
4-6	1 <sup>st</sup> & 2 <sup>nd</sup> Place
7 or more	1 <sup>st</sup> , 2 <sup>nd</sup> & 3 <sup>rd</sup> Place

**18. DISCLAIMER OF LIABILITY:** Competitors in this event are participating entirely at their own risk. See RRS 4, Decision to Race. Racers release PBYC, AnYC, their officers, agents, committee persons, and sponsors from any and all liability for any illness or injury to crew or damage to vessel arising out of participating in this event to the extent that such release does not discharge the racer's insurance carrier under the provisions of the insurance policies on the vessel. The racers assume any risk of illness, injury or death arising out of participating in this event, failure or breakage of the vessel or any of its equipment, or weather conditions.

**19. INSURANCE:** Each participating boat shall be insured with valid third-party liability insurance with a minimum coverage of \$300,000 per incident or the equivalent.

## 2025 TWO HARBORS FALL SERIES COURSE CHART

#	Course	Approx. Heading to 1st Mark, °M	Approx. Length
1	S Bs F	158	4.2
2	S Bs R2s F	158	9.0
3	S Bs As F	158	11.7
4	S Bs Cp Ap F	158	11.9
5	S Bs G2s F	158	17.1
6	S Bs G1s R2s F	158	19.3
7	S G3p F	165	10.0
8	S G3s R2s F	165	14.8
9	S G3s As F	165	16.6
10	S G3s R2p Ap F	165	18.7
11	S G3s G1s F	165	19.2
12	S G1s F	220	15.8
13	S G1s G2s F	220	19.0
14	S G1s R2p Ap F	220	23.1
15	S G2s F	250	15.0
16	S G2s R2s F	250	17.9
17	S As Cs As F	300	10.1
18	S As R2s F	300	8.7
19	S As Mp R2s F	300	12.2
20	S R2s F	340	5.0
21	S R2p Ap F	340	8.7
22	S R2p Bp F	340	9.0
23	S R2p G2p F	340	17.9
24	S Cs F	320	5.5
25	S Cp Ap F	320	8.0



### MARKS

A Fish Sticks spar buoy  
 B Wes spar buoy  
 C Chips spar buoy  
 M Mandalay spar buoy  
 R2 Whistle buoy R"2V"  
 G1 Platform Gail  
 G2 Platform Gilda  
 G3 Platform Gina  
 S Start in vicinity of Mark M; see Sailing Instructions  
 F Finish in vicinity of Mark M; see Sailing Instructions

### APPROXIMATE LOCATION

L: 34° 14.5' N    Lo: 119° 19.8' W  
 L: 34° 9.9' N    Lo: 119° 16.4' W  
 L: 34° 14.4' N    Lo: 119° 18.2' W  
 L: 34° 12.0' N    Lo: 119° 16.5' W  
 L: 34° 14.4' N    Lo: 119° 16.7' W  
 L: 34° 7.5' N    Lo: 119° 24.0' W  
 L: 34° 10.9' N    Lo: 119° 25.1' W  
 L: 34° 7.0' N    Lo: 119° 16.6' W