

# **Bluster Regatta**

January 24–25, 2026

Organizing Authority: Hobie Division 8, LLC

Ballard Park, Eau Gallie Art District Melbourne (EGAD), FL 32935

## **SAILING INSTRUCTIONS (SIs)**

### **1 RULES**

**1.1** The event is governed by the rules as defined in most current *Racing Rules of Sailing* and the individual competitor's class rules, except as any of these are changed by the sailing instructions.

### **2 CHANGES TO SAILING INSTRUCTIONS**

**2.1** Any change to the sailing instructions will be 60 minutes before the first scheduled race on the day it will take effect, except that any change to the schedule of races will be posted by 1800 on the day before it will take effect.

### **3 COMMUNICATIONS WITH COMPETITORS**

**3.1** Notices to competitors will be posted on the official notice board located at Pavilion #8.

**3.2** There will be a Competitor's meeting, Saturday, January 24<sup>th</sup> 1030, Pavilion 8.

**3.3** Other competitors' meetings may be scheduled as required.

**3.4** On the water, the race committee intends to monitor and communicate with competitors on VHF radio channel 72.

**3.5** From the first warning signal until the end of the last race of the day, except in an emergency, a boat shall not make voice or data transmissions and shall not receive voice or data communication that is not available to all boats.

### **4 CODE OF CONDUCT**

**4.1** Competitors and support persons shall comply with reasonable requests from race officials.

**4.2** Any communication on VHF channels indicated by the PRO, whether that communication is by competitors or support persons {chase, safety, mark set boats, etc} after the skippers' meeting has concluded on the 1<sup>st</sup> day of racing until RC back on shore for the final day of racing, should be relegated to official direction or feedback relevant to the safe operation and management of the race course, avoiding any superfluous chatter.

## **5 SIGNALS MADE ASHORE**

**5.1** Signals made ashore will be displayed in the vicinity of Pavilion #8

**5.2** When flag AP is displayed ashore, '1 minute' is replaced with 'not less than thirty minutes' in Race Signals AP.

## **6. SCHEDULE OF RACES**

### **6.1. Saturday January 24<sup>th</sup>**

**6.1.i.** 900 – 1100 – Registration

**6.1.ii.** 1030 – Competitors' meeting

**6.1.iii.** 1200 – First warning signal (2-4 races planned each race day, tba)

### **6.2. Sunday, January 25<sup>th</sup>**

**6.2.i.** 1000 – First warning signal

**6.3.** 1400 – No initial warning signal for a new race after this time

**7.** Awards to follow racing, Pavilion #8 at Ballard Park

**8.** Starts time subject to change depending on weather (including starts at 8am).

## **9. CLASS FLAGS**

**9.1.** All Class flags will be announced at the competitors meeting.

## **8 RACING AREA**

**8.1** The racing area will be located North of the Eau Gallie Causeway (518). Attachment A shows the approximate location of the racing area.

## **9 COURSES**

**9.1** Reference Attachment B for course geometry.

**9.2** Only courses 1, 2, 3 and 4 will be used. The leeward mark may be a single mark or a gate. If the leeward mark is a single mark, it shall be left to port.

**9.3** A-Cat Class will have a gate at the Weather per World Championship format, and this regatta may utilize the same for all classes.

**9.4** Mark C may be a gate or a single mark. If Mark C is a single mark, it shall be left to port.

**9.5** No later than the warning signal, the race committee signal vessel may display the approximate compass bearing of the first leg.

## **10 MARKS**

**10.1** Rounding marks A, B and C (gates) will be inflatable marks.

**10.2** The starting and finishing marks will be inflatable marks distinct from the rounding marks, or an anchored boat displaying an Orange flag.

**10.3** The color and shape of marks will be posted on the official notice board.

## 11 THE START

**11.1** The starting line is between a staff displaying an orange flag on the RC signal vessel at and the course side of the start pin.

**11.2** Boats whose warning signal has not been made shall avoid the starting area during the starting sequence for other races.

**11.3** A boat that does not start five (5) minutes after her starting signal will be scored Did Not Start (DNS) without a hearing. This changes RRS A5.1 and A5.2.

**11.4** No later than the preparatory signal, the race committee shall signal or otherwise designate the course to be sailed. This changes rule 27.1.

## 12 CHANGES OF THE NEXT LEG OF THE COURSE

**12.1** To change the next leg of the course, the race committee will lay a new mark (or move the finishing line) and remove the original mark as soon as practical. When in a subsequent change a new mark is replaced, it will be replaced by an original mark.

**12.2** The race committee may make minor adjustments to marks without signaling a change.

## 13 THE FINISH

**13.1** The finishing line will be on the Starboard side of the RC/Signal boat while finishing and displayed by orange flag.

**13.2** The start/finish line is closed for the duration of a race unless a competitor is finishing.

**If 13.3** If the race committee is absent when a boat finishes, she should report her finishing time, and her position in relation to nearby boats, to the race committee at the first reasonable opportunity.

## 14 PENALTY SYSTEM

**14.1** For all classes, RRS 44.1 is changed so that the Two-Turns Penalty is replaced by the One-Turn Penalty.

## 15 TIME LIMITS [AND TARGET TIMES]

**15.1** The Mark 1 Time Limit, Race Time Limit (see RRS 35), and the Finishing Window are as follows:

Class	Race Target Time	Race Time Limit	Mark 1 Time Limit	Mark 1 Target Time
All	40 minutes	75 minutes	30 minutes	8-13 minutes

**15.2** If no boat has passed the first mark within the Mark 1 Time Limit, the race will be abandoned.

**15.3** The Race Committee may, at its discretion, award points to a boat equivalent to the boat's position in a race. The Race Committee determines the method and order. *This changes RRS 35, A5.1, A5.2 and A10.*

**Failure 15.4** to meet the Target Time will not be grounds for redress. This changes RRS 62.1(a).

## **16 HEARING REQUESTS**

**16.1** For each class, the protest time limit is 60 minutes after the RC Signal Vessel has docked after the last race of the day or 60 minutes after the RC signals "No more racing today, "whichever is later. *This changes RRS 61.3 and 62.2.*

**16.2** Hearing request forms are available at the notice board.

**16.3** Protests and requests for redress or reopening will be delivered there within the appropriate time limit.

**16.4** Notices will be posted no later than 30 minutes after the protest time limit to inform competitors of hearings in which they are parties or named as witnesses. Hearings may be held at the vicinity of the large green pavilion.

## **17 SCORING**

**17.2** One race is required to be completed to constitute a series or regatta.

**17.3** (a) When fewer than four races have been completed, a boat's series score is the total of her race scores.

(b) When four or more races have been completed, a boat's series score is the total of her race scores excluding her worst score.

## **18 SAFETY REGULATIONS**

**18.1** Competitors shall check in by hailing their sail number to the RC Signal Vessel before the start of the first race each day (and the first race following any postponement ashore).

**18.2** A boat that retires from a race shall notify the race committee at the first reasonable opportunity.

**18.3** Competitors shall wear a life jacket, at all times while afloat, except for brief periods while adding or removing clothing. Such a device shall verifiably meet the requirements of either the sailor's national authority or of the government regulations that apply in the racing area. This changes RRS 40. The penalty for failure to comply with this rule shall be at the discretion of the protest committee and may result in disqualification.

### **18.4**

Competitors from outside the U.S. may wear a life jacket approved by their nations' certification authority to the extent permitted by international treaty.

**18.5 Equipment** Each boat should reasonably declare (sail(s), mast, platform) at the start of the regatta, there should be no substitution. Race Committee will defer to class specific rules. Substitution on the water for a broken piece of equipment should be reasonably declared, sailors prepared to explain the substitution as warranted.

## **19 AWARDS**

**19.1** Awards will be presented at the Awards Ceremony after the conclusion of racing on the last day of the event as is reasonably practicable.

## **20 RISK STATEMENT**

**20.1** RRS 3 states: 'The responsibility for a boat's decision to participate in a race or to continue to race is hers alone. 'By participating in this event each competitor agrees and acknowledges that sailing is a potentially dangerous activity with inherent risks. These risks include strong winds and rough seas, sudden changes in weather, failure of equipment, boat handling errors, poor seamanship by other boats, loss of balance on an unstable platform and fatigue resulting in increased risk of injury. **Inherent in the sport of sailing is the risk of permanent, catastrophic injury or death by drowning, trauma, hypothermia or other causes.** It is the personal responsibility of each competitor to determine their level of safety. The organizing authority shall not accept any liability for material damage or personal injury, or death sustained in conjunction with, prior to, during, or after the regatta.

## **26 INSURANCES**

Each participating boat shall be insured with valid third-party liability insurance with a minimum cover of \$300,000(USD) per incident *or the equivalent*.

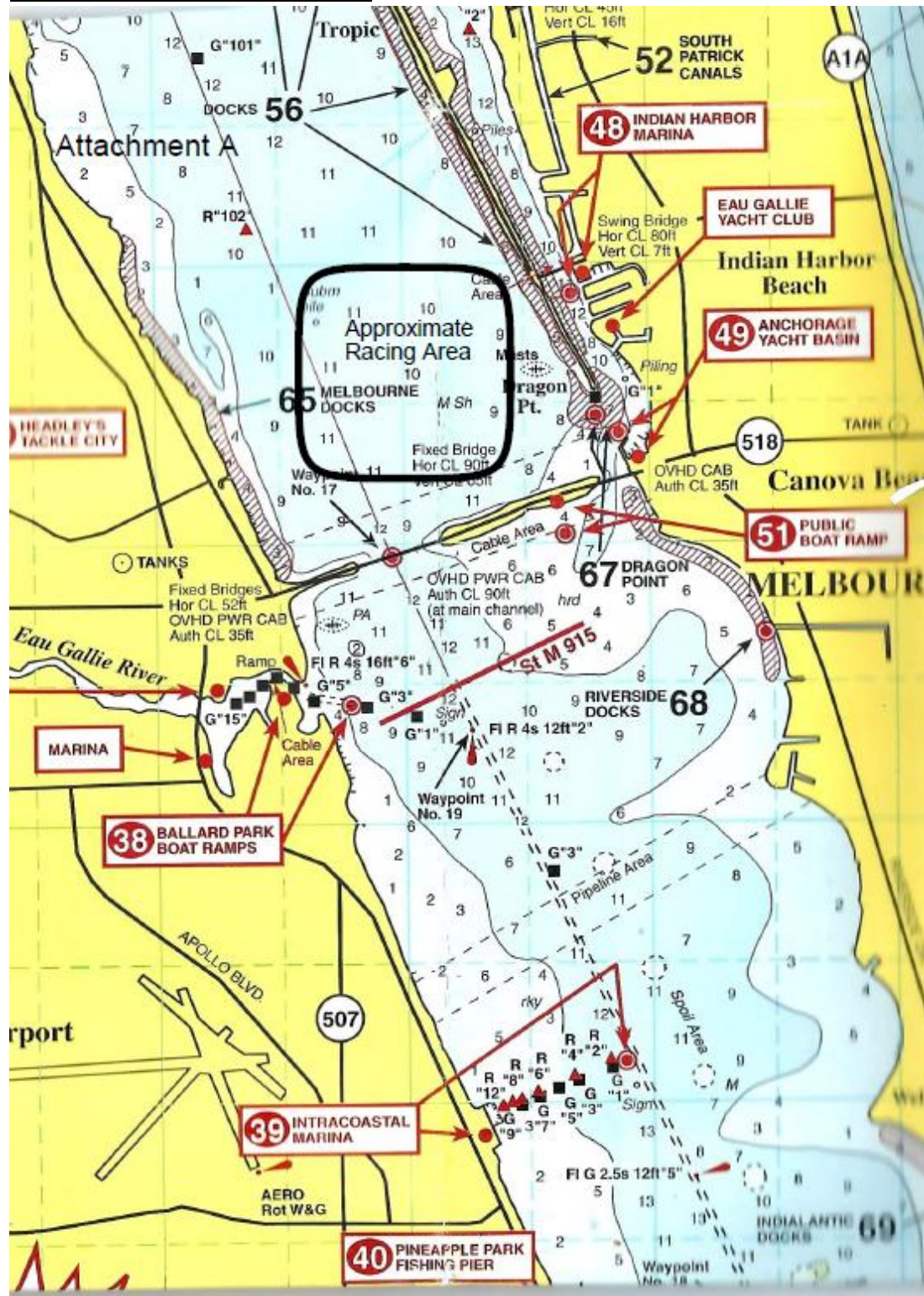
## **27 TRASH DISPOSAL**

Every effort should be taken by the participant to avoid discarding trash or foreign items into the water. Trash could be placed aboard official or support vessels as reasonably available without penalty but participants to store their own on board first until they reach shore.

## **SAFETY NOTES TO ALL SAILORS**

**WHILE THE EVENT SITE IS CLEAR OF ELECTRICAL POWER LINES, WHEN OFF-SITE or heading off site – AVOID!!!**  
Whenever off-site whether raising or lowering a mast, while sailing, or moving your boat over land ALWAYS check for and avoid low overhead electrical power lines. If you see a power line, **AVOID IT! A MAST COMING IN CONTACT OR EVEN NEAR AN ELECTRICAL POWER LINE CAN CAUSE SERIOUS INJURY OR DEATH TO PEOPLE ON OR TOUCHING THE BOAT!**

## Attachment A – Racing area






## **Attachment B – Illustrating the Course**

<b><u>No.</u></b>	<b><u>Course</u></b>	<b><u>Finish</u></b>
1	(S) A C A	(F) Downwind
2	(S) A C A C A	(F) Downwind
3	(S) A C A B C	(F) Upwind
4	(S) A C A B C A	(F) Downwind
5	(S) A C	(F) Upwind
6	(S) A C A C	(F) Upwind
7	(S) A C A B C A C	(F) Upwind

**S = Start, A = Weather Gate Marks, B = Reaching Mark, C = Leeward Gate Marks, F = Finish**

**NOTE:** Colors and/or shape of marks used in illustrations may not accurately represent the actual color or shape of marks used on the actual racecourse. Refer to SI 9, 10, and 12. This regatta will use gates at both windward and leeward ends of the racecourse.

## Attachment C – Preferred Race Course

COURSE AND ORDER TO PASS THE MARKS	MARKS
Start - 1s/1p - 2s/2p - 1s/1p - Finish	<div> 1s, 1p, 2s and 2p</div> <div> Starting mark</div> <div> Finishing mark</div>

