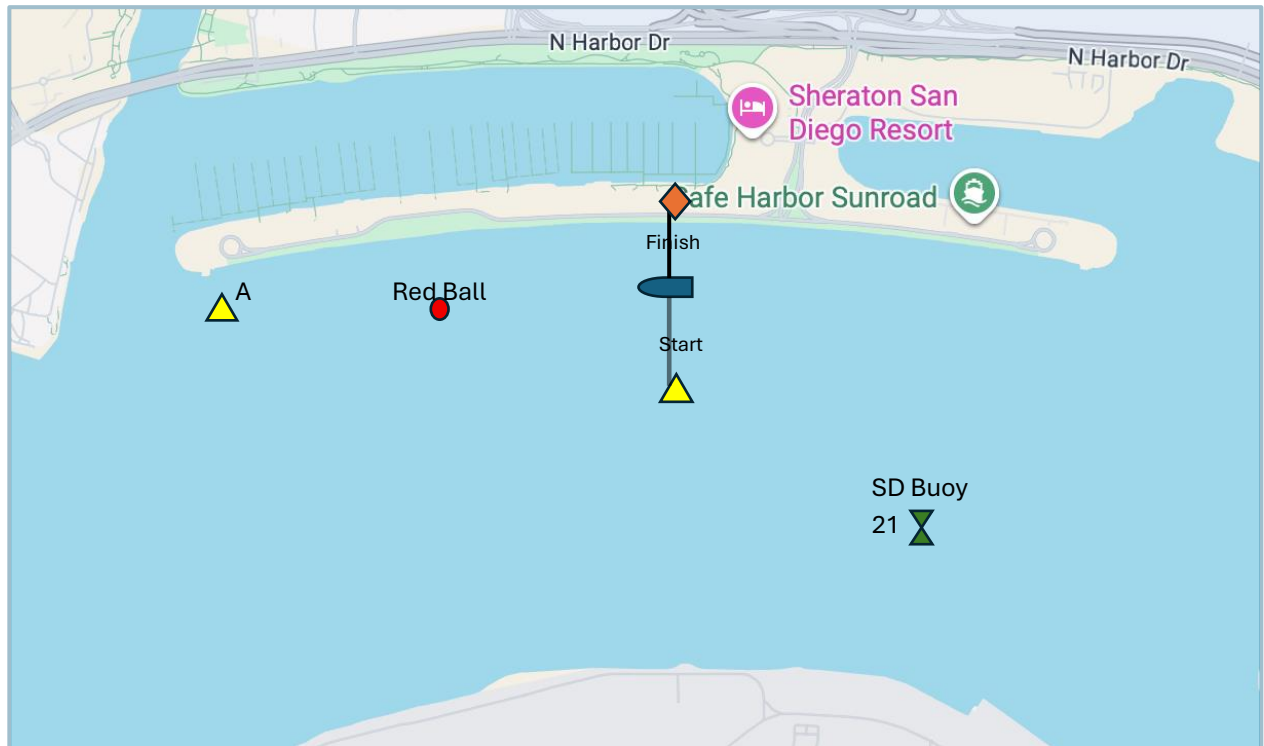


## Sailing Instructions Amendment #1

### Martin 16 Course Chart



**Course A: Start – A – Red Ball – A – Finish** (Upwind start/Downwind finish)

Approximately 2.0 nm

**Course B: Start – A – SD21 – Finish** (Upwind start/Upwind finish)

Approximately 2.1 nm

\*The start and finish lines and mark “A” are as described in the sailing instructions for the CRA Year End Regatta.

\*Marks are to be rounded to port.