



William Berger Series Race 1

(Malibu & Return)

William Stein Series Race 1

(Topanga & Return)

January 3, 2026

Del Rey Yacht Club: 13900 Palawan Way, Marina del Rey, CA 90292

Change 1 December 31, 2025 SIs 5.3 & 5.4

SAILING INSTRUCTIONS

1. RULES

1.1 The event is governed by the rules as defined in the *Racing Rules of Sailing* (RRS).

2 CHANGES TO SAILING INSTRUCTIONS

2.1 Any changes to the SIs will be posted before 0900 on the day of the race.

2.2 Changes to a SI may be made on the water by the RC transmitting the changes on VHF radio channel 68.

3 COMMUNICATION WITH COMPETITORS

3.1 Notices to competitors will be posted on the official noticeboard located at DRYC.org/racing.

3.2 On the water, the RC intends to monitor and communicate with competitors on channel 68.

4 SCHEDULE & CLASS FLAGS

4.1 Classes, Flags, and scheduled warning times are shown in NOR Addendum A to be posted no later than 1800 on 2 January.

4.2 A pre-race briefing for skippers will be held via Zoom on 2 January at 1800. A link will be provided to all skippers before that time.

4.3 The scheduled time of the first warning is 1155.

4.4 Each boat shall check in with the RC signal boat by one of the two ways described below when the Lima (L) flag is displayed.

a) At approximately 1120, the RC will roll call all boats by name in alphabetical order on channel 68. Check-in is complete for a boat only after she responds to her name and is acknowledged by the RC.

b) Following the roll call but not later than 1155, boats that have not checked in during the roll call may hail the RC on channel 68 with her boat name and sail number. A boat is not checked in until the RC has acknowledged her transmission.

4.5 A boat that fails to check in, but sails the course and finishes, shall have 15 minutes added to her finishing time, without a hearing. This changes RRS A5.

5 COURSES & MARKS

5.1 From the starting line, sail the course signaled by the RC. The RC will signal the same course for all classes in a division.

5.2 MALIBU: Handicap distance 22.5nm, Signal Flag E (Echo). Proceed to the Malibu Coast Guard Buoy located at approximately 34° 02.096' N, 118° 40.220' W, and bearing approximately 285°m from the start. This buoy is a white ball with a blue stripe and "CG" in black letters. Round this mark leaving it to port and proceed to SI 5.5.



5.3 BIG ROCK: Handicap distance 17.5nm, Signal Flag F (Foxtrot). Proceed to the inflatable mark located at approximately 34° 04.320' ~~01.896~~ N, 118° 34.680' ~~36.839~~ W, and bearing approximately 293°m from the start. Round this mark leaving it to port and proceed to SI 5.5.



5.4 TOPANGA NEARSHORE: Handicap distance 13.6nm, Signal Flag G (Golf). Proceed to the Scripps Waverider Buoy whose anchor is 34° 04.800' ~~01.320~~ N, 118° ~~33.804~~ ~~34.680~~ W and bearing approximately 300°m from the start. The estimated orbit diameter is 100 yards. This spherical yellow buoy is approximately 3 ft in diameter with a whip antenna. It is National Data Buoy Center 46268 and detailed information is available at: https://www.ndbc.noaa.gov/station_page.php?station=46268. Round this mark leaving it to port and proceed to SI 5.5.



5.5 MDR OFFSET: This is an inflatable mark located at approximately 33° 57.333'N, 118° 27.412' W. This mark may be illuminated. Round this mark to port and proceed to SI 7.

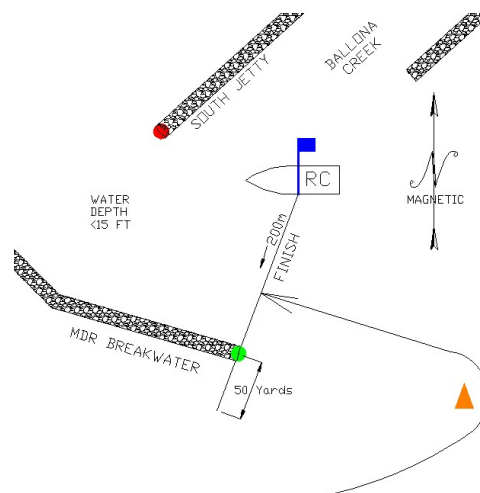
6 THE START

- 6.1** The starting area is in the vicinity of the Marina del Rey "S" Mark (See Marina del Rey Course Chart 18, available at ASMBYC.org/events).
- 6.2** The starting line will be between the course side of an inflatable mark and the staff of an orange flag on the RC signal boat.
- 6.3** A boat that does not start within 10 minutes after her starting signal will be scored Did Not Start without a hearing. This changes RRS A5.1 and 5.2.

7 THE FINISH

7.1 The finishing line is between the staff of a blue flag on the RC boat in the mouth of Ballona Creek and the green light on the south end of the MDR detached breakwater. Only for Performance Division A Class A boats: the finishing line includes an optional extension 50 yards to seaward of the green light. The green light is located at 33° 57.501'N, 118° 27.630' W and its period is 6 seconds. Boats finishing after sunset shall illuminate their sail numbers.

7.2 [DP] The RC intends to be on station until all boats have finished or 1730, whichever is earlier. If the RC is absent when a boat finishes, she shall take her own finishing time when the green light in SI 7.1 bears 200°m (20°m if finishing outside the breakwater). Each boat that takes her own finishing time pursuant to this SI shall email her sail number and finish time on the subject line of an email and send to racers@dryc.org within 30 minutes of finishing.



8 TIME LIMITS

- 8.1 If no boat in a class finishes by 1730, the race for that class will be abandoned.
- 8.2 The time limit (TL) for finishing is 1900. Boats not finishing before the TL will be scored Time Limit Expired (TLE) without a hearing. A boat scored TLE shall be scored points for the finishing place one more than the points scored by the last boat that finished in her class before the TL. This changes RRS 35, A5.1, A5.2, and A10.

9 HEARING REQUESTS

- 9.1 The protest time limit is one hour after a boat finishes or retires. Protests shall be submitted by email to racers@dryc.org, or dropped off at DRYC's front desk. For email submittals, the subject line shall be the sail number of the protesting boat followed by the word "protest". The time the email was sent will be the submittal time.
- 9.2 Hearing request forms are available at USSAILING.org.

10 SAFETY REGULATIONS

- 10.1 [DP] A boat that retires shall notify and be acknowledged by the RC at the first reasonable opportunity on channel 68.
- 10.2 [DP] No more than 30 minutes after retiring, an email must be sent to racers@dryc.org with the subject line the retiring boat's sail number, "retired", and the time of retirement.
- 10.3 A boat failing to notify the RC of its retirement may be excluded by the race committee or organizing authority from entering DRYC races.

11 REPLACEMENT of SAILS

[DP] Should a boat use a sail with a different number than what is on her entry form, the RC shall be notified via email to racers@dryc.org before 0900 the day of the race. The subject of the email shall be: "SAIL # CHANGE" and the email shall include:

- 1) Entry's Sail Number
- 2) Boat's name
- 3) Number on the sail that will be used in the race.

Scoring errors caused by a failure to notify the RC of a sail number change will not be grounds for redress.

12 RISK STATEMENT

RRS 3 states: "The responsibility for a boat's decision to participate in a race or to continue racing is hers alone." By participating in this event, each competitor agrees and acknowledges that sailing is a potentially dangerous activity with inherent risks. These risks include strong winds and rough seas, sudden changes in weather, failure of equipment, boat handling errors, poor seamanship by other boats, loss of balance on an unstable platform, and fatigue resulting in increased risk of injury. Inherent in the sport of sailing is the risk of permanent, catastrophic injury or death by drowning, trauma, hypothermia or other causes.

13 RACE OFFICERS

DRYC Event Chair: Brendan Huffman
PRO: Harlan Holmes
DRYC office:

racers@dryc.org
racers@dryc.org
(310) 823-4664

INFORMATION FOR COMPETITORS

(NOT PART OF THE SAILING INSTRUCTIONS)

HOSPITALITY

After the race competitors and their crews are invited to enjoy refreshments and libations at DRYC. This invitation is also extended to Multihull competitors and their crews.

MULTIHULL RACE

A separate (not part of the Berger or Stein Series) multihull/ORCA race will start in sequence following Performance A.

The scheduled warning time for this race is 1230

The multihull/ORCA flag is zero (0)



With the exception of 4.4 and 4.5 the Berger & Stein SIs will apply to the multihull/ORCA race. The RC will visually check in the multihull/ORCA boats when they cross the starting line.