



Hawaii Yacht Club

1739C Ala Moana Blvd. Honolulu HI 96815

Telephone: (808) 949-4622

E-mail: rcsail@hawaiiyachtclub.org

Pokai Bay Race

Sailing Instructions
March 28th-29th, 2026
Hawaii Yacht Club

1. RULES

The event is governed by the rules as defined in The Racing Rules of Sailing.

A. RSS 63.1(b), the US Sailing prescription is not in effect.

B. Rule 60.4(a)(2) is changed as follows: (2) if it alleges a breach of a rule of Part 2 or rule 31 and is from a boat that was not involved in, and did not see, the incident, or

C. Modification to Rule 47 (Trash Disposal) For this event only, biodegradable sail stops such as yarn or similar materials used to control a spinnaker during hoisting and setting, and allowed to enter the water as part of that process, are permitted and shall not be considered a breach of Rule 47, provided such materials are biodegradable and used only for this purpose.

2. CHANGES TO SAILING INSTRUCTIONS.

Any change to the sailing instructions will be posted before 09:00 on the day it will take effect, except that any change to the schedule of races will be posted by 20:00 on the day before it will take effect.

3. COMMUNICATION

A. Notices to competitors will be posted on the official notice board located at Hawaii Yacht Club. On the water, the race committee will monitor and communicate with competitors via VHF radio on channel 68.

B. SIGNALS MADE ASHORE

Signals made ashore will be displayed at the Hawaii Yacht Club flagpole.

4. SCHEDULE OF RACES

Saturday, March 28th.

<u>Class</u>	<u>Warning</u>	<u>Start</u>
B & Cruising	09:55 am	10:00 am
A	10:05 am	10:10 am
X	10:15 am	10:20 am



Hawaii Yacht Club

1739C Ala Moana Blvd. Honolulu HI 96815

Telephone: (808) 949-4622

E-mail: rcsail@hawaiiyachtclub.org

Sunday, March 29th.

<u>Class</u>	<u>Warning</u>	<u>Start</u>
B & Cruising	10:55 am	11:00 am
A	11:05 am	11:10 am
X	11:15 am	11:20 am

In the event a start sequence is canceled or delayed, the class order will remain unchanged. B class will start before A class before X class.

5. CLASS FLAGS

<u>Class</u>	<u>Flag</u>
B & Cruising	Green with White "C"
A	Red square
X	Pink with Black "X"

6. COURSE

- A. Boats shall pass to seaward of all government aids to navigation. Ala Wai Harbor, Kewalo Basin, Honolulu Harbor, Keehi Lagoon, Pearl Harbor, Kalaeloa Harbor
- B. Boats shall not enter the Tesoro and Chevron security zone near Barbers Point either day.
 - 21 16.43' N, 158 06.03' W
 - 21 17.35' N, 158 3.95' W
 - 21 16.47' N, 158 03.50' W
 - 21 15.53' N, 158 05.56' W
- C. Boats shall not enter the Puuloa Danger Zone near Pearl Harbor on Sunday 3/29/26.
 - 21 18.350' N, 157 59.233' W
 - 21 18.183' N, 158 00.283' W
 - 21 17.183' N, 158 00.100' W
 - 21 7.367' N, 157 59.050' W
- D. Saturday
Start – pass DH(p) – Finish
- E. Sunday
Start – Finish



Hawaii Yacht Club

1739C Ala Moana Blvd. Honolulu HI 96815

Telephone: (808) 949-4622

E-mail: rcsail@hawaiiyachtclub.org

7. MARKS

"DH" is red Diamond Head Buoy

8. THE START

- A. Boats shall check in at the race committee prior to their start sequence on VHF 68.
- B. Saturday' start will be approximately .05 nm South of Ala Wai R2.
- C. Sunday's start will be approximately 0.5nm West of the Kahe power Plant.
- D. The starting sequence will conform to RRS 26.
- E. The starting line will be between the orange inflatable buoy on the port end and the staff of an orange flag on the Main Race Committee Boat on the starboard end.
- F. Boats starting later than 10 minutes after the last starting signal for their class will be scored Did Not Start without a hearing. This changes RRS A4 and A5.

9. THE FINISH

Saturday

- A. The finish line will be between Ko'olina Coast Guard Mooring Buoy and the staff of an orange flag on the Main Race Committee Boat on the port end.
- B. Ko'olina Coast Guard Mooring Buoy: 21*20.352'N, 158*8.228'W
- C. In the event the Main Race Committee Boat is not at the finish line, the finishing line will extend 0.25 miles seaward from the Ko'olina Coast Guard Mooring Buoy bearing due West.
- D. All boats shall record their own finish time and report it to the Race Committee upon request.
- E. Boats finishing after 1700 hours shall record their own finish time and report it to the Race Committee as soon as possible.

Sunday

- A. The finishing line will **extend 100' seaward from R2** and a point in the HYC clubhouse with approximate bearing of 017° magnetic (**pass R2 to Port**).
- B. Yachts shall check in with and be acknowledged by the race committee via text message to Scott Allen (808) 312-2249 when in the area of HH buoy with boat name and HH.
- C. All boats shall record their own finish time and report it to the Race Committee upon request. Boats finishing after 1700 hours shall record their own finish time and report it to the Race Committee as soon as possible.



Hawaii Yacht Club

1739C Ala Moana Blvd. Honolulu HI 96815

Telephone: (808) 949-4622

E-mail: rcsail@hawaiiyachtclub.org

10. PROTESTS AND REQUESTS FOR REDRESS

- A. Protest forms are available from the race committee or on the HYC official bulletin board. Protests and requests for redress shall be delivered to the race committee within the appropriate time limit.
- B. The protest time limit is 90 minutes after the last boat in the race has finished.
- C. Notices of protests by the race committee or the protest committee will be posted to inform boats under RRS 61.1(b).
- D. Deliver protests to PRO Tony Miller, tony.miller.hi@gmail.com

11. SCORING

- A. The low point system of Appendix A will apply.
- B. In the event of a Tie, the lower combined corrected time shall determine the tie breaker. This modifies Appendix A 8.2.
- C. The PHRF handicap system will be in effect for all boats. Race handicaps will be calculated using the Time-on-Time method.

12. SAFETY REGULATIONS

- A. VHF Channel 68 is reserved for essential communications, otherwise yachts shall monitor VHF Channel 16.
- B. Upon withdrawing from the race, yachts shall inform the race committee via VHF Channel 68, by voice hail, or by calling the principal race officer Lynn Silva (808) 295-3404. Failure to do so may result in denied entry to future races.

13. PRIZES

- A. For each class, 1st prize will be awarded if three or more boats enter, 2nd prize will be awarded if five or more boats enter, and 3rd prize will be awarded if seven or more boats enter.

14. DISCLAIMER OF LIABILITY

- A. Competitors participate in the regatta entirely at their own risk. See RRS 4, Decision to Race. The organizing authority will not accept any liability for material damage or personal injury or death sustained in conjunction with or prior to, during, or after the race.

15. INSURANCE

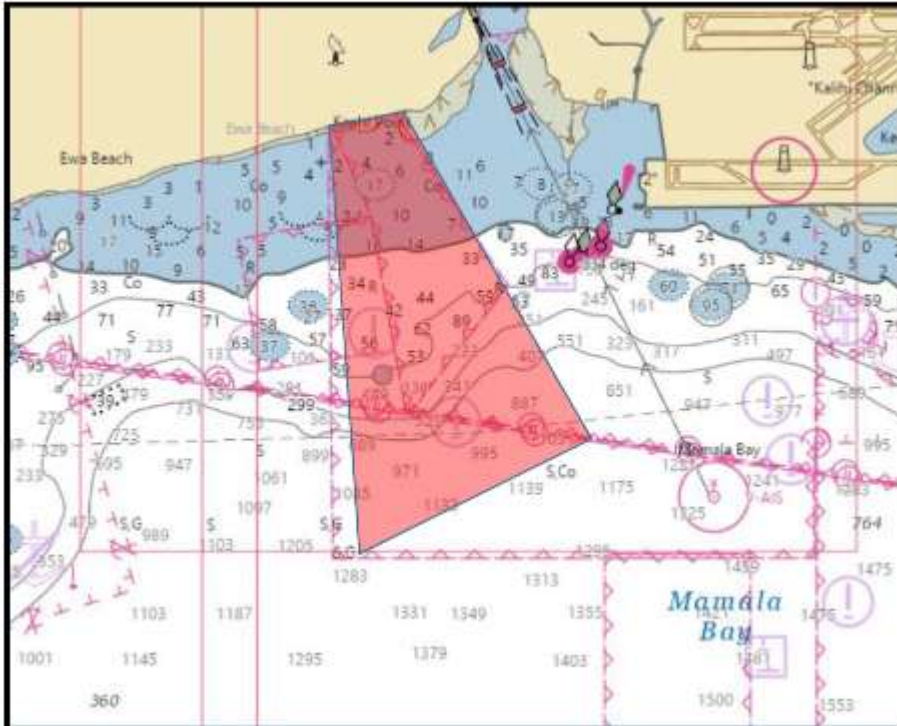
- A. Each participating boat shall be insured with valid third-party liability insurance with a minimum cover of \$500,000 per event or the equivalent.



Hawaii Yacht Club
1739C Ala Moana Blvd. Honolulu HI 96815
Telephone: (808) 949-4622
E-mail: rcsail@hawaiiyachtclub.org

16. MAPS

A. Puuloa Danger Zone



B. Tesoro and Chevron security zone

