

THE BORDER RUN INTERNATIONAL SAILING EVENT™
April 9-10, 2011
XS Racing, South Shore, Dana West and Southwestern Yacht Clubs
Newport Beach, CA

SAILING INSTRUCTIONS

The Border Run International Sailing Event™ is brought to you by XS Racing. The organizing authority for The Border Run International Sailing Event™ is South Shore Yacht Club (SSYC) P.O. Box 1174, Newport Beach, CA 92659.

1. RULES

1.1 This race will be governed by the rules as defined in the International Sailing Federation (ISAF) Racing Rules of Sailing (RRS) 2009-2012.

1.2 The following prescriptions of the United States national authority, US SAILING, that will apply are stated in full below:

1.2.1 Rule 68 – Damages. US SAILING prescribes that:

(a) A boat that retires from a race or accepts a penalty does not by that action alone admit liability for damages.

(b) A protest committee shall find facts and make decisions only in compliance with the rules. No protest committee or US SAILING Appeals authority shall adjudicate any claim for damages. Such a claim is subject to the jurisdiction of the courts.

(c) A basic purpose of the rules is to prevent contact between boats. By participating in an event governed by the rules, a boat agrees that responsibility for damages arising from any breach of the rules shall be based on fault as determined by application of the rules, and that she shall not be governed by the legal doctrine of “assumption of risk” for monetary damages resulting from contact with other boats.

1.2.2 Rule 76.1 – Exclusion of Boats or Competitors. US SAILING prescribes that an Organizing Authority or race committee shall not reject or cancel the entry of a boat or exclude a competitor eligible under the Notice of Race and Sailing Instructions for an arbitrary or capricious reason, or for the reason of race, color, national origin, gender, sexual orientation, or age.

1.2.3 Rule 76.3 – Exclusion of Boats or Competitors – US SAILING prescribes that a boat whose entry is rejected or cancelled or a competitor who is excluded from a race or series shall, upon written request, be entitled to a hearing conducted by the protest committee under rules 63.2, 63.3, 63.4 and 63.6.

1.2.4 Appendix F, Procedure for Appeals and Requests – See US SAILING RRS Appendix F for full text.

1.3 For boats with movable ballast, rule 51 is waived, but only with respect to the shifting of their declared and measured ballast, and rule 52 is also waived, but only with respect to the shifting of that ballast. All ballast systems shall also be capable of manual operation.

1.4 National letters of country identification are not required. This changes rule 77 and rule G.1. (b).

1.5 The notification requirements of rule 61.1 are satisfied for all filed protests other than Part 2 RRS protests by posting protests pending on either the Official Race Results Board or the Official Notice Board adjacent to the Official Results Board, or both. This changes rule 61.1.

1.6 The Performance Handicap Racing Fleet (PHRF) Marine Industry Racer (MIR) rule shall not apply to any fleets in this event.

1.7 All boats must meet US Coast Guard requirements appropriate to their vessel.

1.8 All (PHRF) mono-hulls (except for Sprint Course) shall comply with the PHRF Category 2 Standard Equipment list. For entrants that do not have a man overboard pole or inflatable raft, an equipment share program is offered subject to availability.

1.8.1 All (XS Racing) mono-hulls shall comply with XS Racing equipment list.

1.9 All multi-hulls shall comply with their class equipment and requirements list as either:

1.9.1 ORCA Ocean Racing Catamaran Equipment List.

1.9.2 XS Racing Equipment List.

Beach Cat multi-hulls

1.9.3 In addition to (1.9, 1.12, 1.13, 1.14) boats must carry two waterproof flashlights, three handheld flares. Crew must wear a USGC approved life preserver with attached strobe light and one hand held flare.

1.10 All Shadow Boat Class Entries must:

1.10.1 Submit a sailing resume' showing off-shore over night experience.

1.10.2 Supply their own shadow boat that is capable of acting as a First Responder Rescue Assistance Vessel.

1.10.3 Skipper and all crew must be 18 years of age or older.

1.10.4 Each entry (Skipper and all Crew) must turn in a signed liability release form.

1.10.5 In addition to (1.10, 1.12,1.13,1.14) must carry running lights (minimum clip on), 2 paddles or 2 hp motor, flare kit, die marker, SPOT or other personal locator beacon devise and each crew member must wear a USGC approved life preserver with attached strobe light, one hand held flare, whistle and die marker.

1.11 Cruising Class boats must use the short course and are NOT allowed to use their engines during the race.

1.12 In addition to complying with their class and equipment rules:

1.12.1 All boats shall carry a GPS.

1.12.2 All boats shall carry a hand held VHF marine band radio.

1.12.3 All boats (except one person boats) shall carry two cell phones sealed in a waterproof container or bag.

1.13 All boats (other than shadow boat class or Sprint course racers) shall have a minimum LOA of 18 ft.

1.14 All boats racing shall have a current, valid Rating Certificate issued by the fleet handicapping authority of the classes and sub-classes in which they are competing.

2. ADVERTISING

2.1 Competitor advertising will be restricted as follows: ISAF Regulation 20.9 will be modified to allow advertising of a company if the boat owner and skipper are major shareholders of the company advertising.

2.2 Boats may be required to display advertising supplied by the Organizing Authority in accordance with ISAF Regulation 20.4.

3. CHANGES TO SAILING INSTRUCTIONS

3.1 Any changes to the Sailing Instructions will be posted at SSYC, on the SSYC website and TheBorderRun.org web site by 09:00 Saturday April 9, 2011. Any changes after that will be made on the water.

4. SIGNALS MADE FROM SHORE

4.1 If a start postponement causes a return to shore and the "AP flag is flown from ashore the "1 minute" will be replaced by "60 minutes".

5. CLASSES, STARTING ORDER, CLASS FLAG

5.1 See Appendix "A" for starting order and class flags. See Appendix "B" for Class breaks / course assignments.

5.2 All sub classes will start with their assigned base class.

5.3 Entrants are responsible for knowing their starting class, but are required to display their class flag while racing.

5.4 Cruising classes must sail the short course and are **NOT** allowed to run their engine during the race.

5.5 All entrants shall check-in at the Race Committee boat located at the Balboa Pier. **You can check-in by hailing the Race Committee boat or by using Channel 72. When checking-in please stay outside and clear of the starting line.**

6. INSPECTIONS

- 6.1 XS Racing /SSYC may inspect any (non-shadow boat class) mono-hull boat that has finished the race for compliance with the PHRF Standard Equipment List for Category 2 Races, US Coast Guard Equipment, and other equipment referenced in NOR 1.8
- 6.2 XS Racing / SSYC may inspect an (non-shadow boat class) multi-hull boat that has finished the race for compliance with the ORCA or XS Racing Equipment List for Coastal Race, US Coast Guard Equipment, and the GPS referenced in NOR 1.9
- 6.3 XS Racing / SSYC may inspect any XS Racing Beach Cat and / or Shadow boat class boat that finished the race for compliance with the equipment and requirements set forth in the Sailing Instructions.
- 6.4 Boats failing to comply with their Equipment List requirements may be protested and a penalty including disqualification may be imposed.

7. THE COURSE

The three courses are defined as the Long, Short, and Sprint as set below:

- 7.1 Long Course racers will start off of Balboa Pier in Newport Beach, CA and sail to the Coronado Islands, leaving the small island (Coronado del Norte) to Port and sail to the San Diego finish line.
- 7.1.1 For scoring purposes, the handicap distance is 91 nautical miles.
- 7.2 Short Course racers will start off of Balboa Pier in Newport Beach, CA and sail to the San Diego finish line.
- 7.2.1 For scoring purposes, the handicap distance is 70 nautical miles.
- 7.3 XS Racing beach cat multi-hulls and Shadow Boat classes will sail the short course. Shadow boats will sail to the San Diego finish line. Beach Cat multi-hulls will sail to the Mission Bay finish line.
- 7.4 Sprint Course racers will start off of Balboa Pier in Newport Beach, CA and race to the Dana Point Finish line.
- 7.4.1 For scoring purposes, the handicap distance is 14 nautical miles.

WARNING!!! FOR SHORT COURSE SAILORS: STAY CLEAR OF THE KELP BEDS OFF POINT LOMA!!! KELP BEDS EXTEND OFFSHORE AND CAN BE A NAVIGATIONAL HAZARD! CHECK YOUR CHARTS!!!

8. THE START

- 8.1 The starting line will be a line between an orange flag on the race committee boat and an orange trihedral in the water. This line will be stationed approximately 100 yards off of Balboa Pier.
- 8.2 The first warning will be given at 10:55 PT.
- 8.3 The start will be in accordance with RRS rule 26, as a rolling 5 minute start.
- 8.4 For all vessels over early (OTC) – Individual and group recalls will be made in accordance with RRS 29.1 and 29.2 respectively. The race committee will hail sail numbers on VHF Channel 68 however; neither the timing of this hail, equipment failure or the failure of a yacht to hear the hail shall be cause for redress from the protest committee.
- 8.5 Check in – Each entry shall check in by coming within hail of the race committee start boat (prior to 10:50 PT) and hailing their class and sail number to the committee members. **You can check-in by hailing the Race Committee boat or by using Channel 72. When checking-in please stay outside and clear of the starting line.** Check-in is not complete until the race committee has acknowledged your hail **or by radio on Channel 72.**

9. THE FINISH

- 9.1 When the lead yacht of the leading class in the Long and Short Courses is within two hours of the finish she is requested to so advise the Race Committee.
- 9.2 The Long and Short Course finish line shall be approximately 500 yards east (magnetic) of the Zuniga Jetty light “Y” that is at approximately 32:40.19N by 117:13.10W. **The “Z” light marks the south end of Zuniga Jetty and the “Y” light is the next light to the north.**

9.3 The Long and Short Course finish line shall be between a staff displaying an orange flag on the Race Committee Boat at the starboard end and the course side of the yellow tetrahedron mark at the port end. A proper finish will leave the Race Committee boat to starboard. After sunset, the Race Committee shall attempt to display a yellow strobe light and illuminate the tetrahedron mark.

9.4 If for any reason, the Race Committee boat is not on station at the finish, yachts shall take their own time when the position of light "Y" bears 270 deg. Magnetic and is within 500 yards. Times so taken must be corrected to GPS time and reported to the SWYC Race Committee front office (619) 222-0438 between 0900 and 1400 on Sunday, April 10, 2011. Finishers shall note sail numbers of other yachts finishing at approximately the same time.

WARNING!!! RACERS ARE CAUTIONED TO PASS SOUTH OF THE "Z" LIGHT AT THE END OF THE ZUNIGA JETTY AS THE JETTY IS SOMETIMES SUBMERGED BUT SHALLOW, EVEN AT HIGH TIDE. AFTER FINISHING BE SURE TO ENTER HARBOR BY GOING OUTSIDE AND CLEARING THE END OF THE ZUNIGA JETTY. CHECK YOUR CHARTS!!!

9.5 The Sprint Course finish line at Dana Point shall be approximately 75 yards West of government green whistle navigation buoy 'G' that is at approximately N 33.27.10 by W 117.41.90 off Dana Point.

9.6 The Sprint Course finish line shall be between a staff displaying an orange flag on the Race Committee Boat at the starboard end and the course side of the orange tetrahedron mark at the port end. A proper finish will leave the Race Committee boat to starboard.

9.7 The Short Course Beach Cat multi-hulls will finish off Mission Bay between the ends of the north and south jetty lights going into to Mission Bay. Boats will take their own time by recording their finish time with a handheld GPS. Skippers will then call in their finish time to (619) 993-5036 (SWYC).

10. TIME LIMIT

10.1 The Time Limit for the Long and Short Courses is 1400 hours, Sunday, April 10, 2011. All boats not finishing before the Time Limit will be scored Did Not Finish (DNF). This changes Rule 35.

10.2 All boats that have not or will not be finishing by the time limit are required to notify the race committee of their location and intentions by speaking with the race committee on VHF Channel 68 or via phone at (714) 815-7035.

10.2 The Time Limit for the Sprint Course is 1800 hours, Saturday, April 9, 2011. All boats not finishing before the Time Limit will be scored Did Not Finish (DNF). This changes Rule 35.

11. RETIREMENTS

11.1 All vessels that retire from the race shall notify the race committee as soon as practical (but in all cases prior to the finish time limit) by notifying the race office by phone at (714) 815-7035 or speaking with race committee on VHF Channel 68, **at (619) 993-5036 or at SWYC at (619) 222-0438.**

12. PENALTY SYSTEM

Rule 44.3 will be used for Part 2 violations. A one (1) hour time adjustment penalty can be taken in lieu of a non disqualifying penalty.

13. PROTESTS AND REQUESTS FOR REDRESS

13.1 All protests must be filed (in writing) at the Race Committee desk Southwestern Yacht Club by (the earlier of) 1 hour after the protesting boats finish or 1 hour after the race time limit.

14. SCORING SYSTEM

14.1 For trophies awarded on Corrected Time, Off Wind Course Ratings (OWC) will be used for time correction:

14.1.1 IRC and ORR time allowances will be calculated using time-on-time scoring.

14.1.2 All other Corrected Time allowances will be calculated based on the boats race rating and the races handicap distance (91nm long course, 70nm short course and 14nm Sprint Course)

14.1.3 Boats with the lowest Corrected Time in their class (after application of scoring penalties, if any) will be scored in first place.

14.2 For trophies awarded on Elapsed Time:

14.2.1 Results will be calculated using the boat's class start time and actual finish time.

14.2.2 Boats with the lowest Elapsed Time (after application of scoring penalties, if any) will be scored in first place.

15. PRIZES

Trophies will be awarded at the Trophy Party after the race on Sunday April 25, 2010 at Southwestern Yacht Club in San Diego at 2702 Qualtrough Street. The Trophy presentation will begin at 1600 hours.

15.1 The number of trophies is based on the number of starters as follows:

1 – 5 Starters = 2 trophies

6 – 9 Starters = 3 trophies

10 – 14 Starters = 4 trophies

15+ Starters = 5 trophies

16. INSURANCE

Each participating boat shall be insured with valid combined single limit watercraft liability insurance in an amount not less than \$300,000 personal injury and personal property damage of \$100,000.

17. DISCLAIMER OF LIABILITY

Competitors participate in this Race entirely at their own risk. Please see rule 4 (Decision to Race). The Organizing Authority will not accept liability for damage or personal injury or death sustained in conjunction with, prior to, during, or after this Race. Each boat owner must sign a race entry form releasing all liability on the race organizers, their sponsors, contractors and anyone affiliated with the event.

18. RIGHT TO USE NAME AND LIKENESS

By participating in The Border Run International Sailing Event™, a competitor automatically grants to the organizers and its sponsors the right, in perpetuity, to make, use, and show from time to time at their discretion, any still or motion pictures and live, taped, or filmed television and other reproductions of him or her without compensation.

19. CONTACT INFORMATION

The Race committee will monitor and make any on the water announcements on VHF marine channel 68. For Checking-in at the Start use Channel 72. After the start, the Race Committee can be reached at (714) 815-7035 (SSYC) or (619) 993-5036 (SWYC).

20. PRE SEND OFF PARTY AND RACE INFORMATION-NEWPORT BEACH, CA

20.1 Pre-Race Send-Off Party will be held at the Balboa Pavilion's 2nd Floor Grand Ballroom beginning at 5:00 PM, Friday, April 8th and concludes at 11:00 PM. The address is 400 Main Street, Balboa Village, CA 92661, (949) 673-4633. Parking is available at a 500 space parking lot adjacent to the Balboa Pier at the South end of Main Street. Parking is free after 6:00 PM.

20.2 The Border Run Mexican Buffet will feature Chicken Fajitas with flour and corn tortillas, Beef Taquitos, Spanish Rice and beans, homemade Tortilla Chips, guacamole, salsa and sour cream. There will be two buffet tables at the East and West ends of the Ballroom with chips and salsa on the tables. The Border Run Mexican Dinner Buffet is \$10 for Border Run race participants and \$25 for all other guests. Buffet Dinner service begins at 6:00 PM and concludes at 7:30 PM. Cash and credit cards will be accepted. Portion of dinner proceeds to be donated to LLS!!!

20.3 There will be two cash bars serving domestic beers at \$4.50, imported beers at \$5.50 and well drinks are \$6.00-\$9.00. The signature Border Run Margarita will be available for \$5.00.

20.4 The Skippers Meeting will be at 7:30 PM.

20.5 The Sea Tow Shuttle boat service will be available to and from the Balboa Pavilion Grand Ballroom and nearby moorings and anchorages from 4:00 PM to 11:00 PM on Friday, April 8th. Sea Tow can be reached on Channel 68 or by calling (562) 592-2808. The price is \$2.00 per person each way. Boats on slips are encouraged to call 1-800-4mytaxi for land based transportation.

20.6 There will be a live band performing your favorite top forty hits from the 60's, 70's and 80's for your dining and dancing pleasure.

21. POST TROPHY PARTY AND RACE INFORMATION-SAN DIEGO, CA

21.1 Southwestern Yacht Club extended service hours: Restaurant and Bar will remain open until 11:00 PM on Saturday, April 9th for the racers finishing Saturday evening.

21.2 Southwestern Yacht Club will offer a Breakfast Buffet Sunday morning, April 10th for \$8.00 per person beginning at 8:00 AM and will feature Bloody Mary and Mimosa specials at additional cost.

21.3 Southwestern Yacht Club will monitor Channel 68 for boat accommodations with reservations and those sailors requiring shuttle service from La Playa Anchorage or Kona Kai Resort.

21.4 Boats anchoring in La Playa anchorage will use Southwestern Yacht Club’s Dinghy dock on F Dock. Those sailors using the Kona Kai Resort will arrive at the Junior Sailing Dock. The shuttle boat service operates from 7:30 AM through 6:00 PM on Sunday morning, April, 10th.

21.5 Club restrooms will be open for showers starting Saturday night, April 9th at 5:00 PM through Sunday.

21.6 There will be a live “Beach Boys” tribute band performing at the Post-Race party for your dining and dancing pleasure.

22. POST SPRINT PARTY and RACE INFORMATION-DANA POINT, CA

22.1 Sprint Race finishers can celebrate at Dana West Yacht Club, 24601 Dana Drive, Dana Point, CA.

22.2 The bar menu and your favorite libations are available for your enjoyment 4:00 PM – 8:00 PM.

22.3 SPRINT COURSE trophies to be presented at the Trophy Party in San Diego on Sunday (See 21 Post Party Info above)

APPENDIX “A”

**STARTING ORDER, CLASS FLAGS – STARTING ORDER TO BE ANNOUNCED BY 1700 HRS
WEDNESDAY APRIL 6TH 2011 ON OUR WEBSITE AT WWW.THEBORDERRUN.ORG**

Class	Start Time	Class Flag
	11:00 PDT	Code Flag “A”
	11:05 PDT	Code Flag “B”
	11:10 PDT	Code Flag “C”
	11:15 PDT	Code Flag “D”
	11:20 PDT	Code Flag “E”
	11:25 PDT	Code Flag “F”
	11:30 PDT	Code Flag “G”
	11:35 PDT	Code Flag “H”
	11:45 PDT	Code Flag “J”
	11:50 PDT	Code Flag “K”
	11:55 PDT	Code Flag “L”
	12:00 PDT	Code Flag “M”

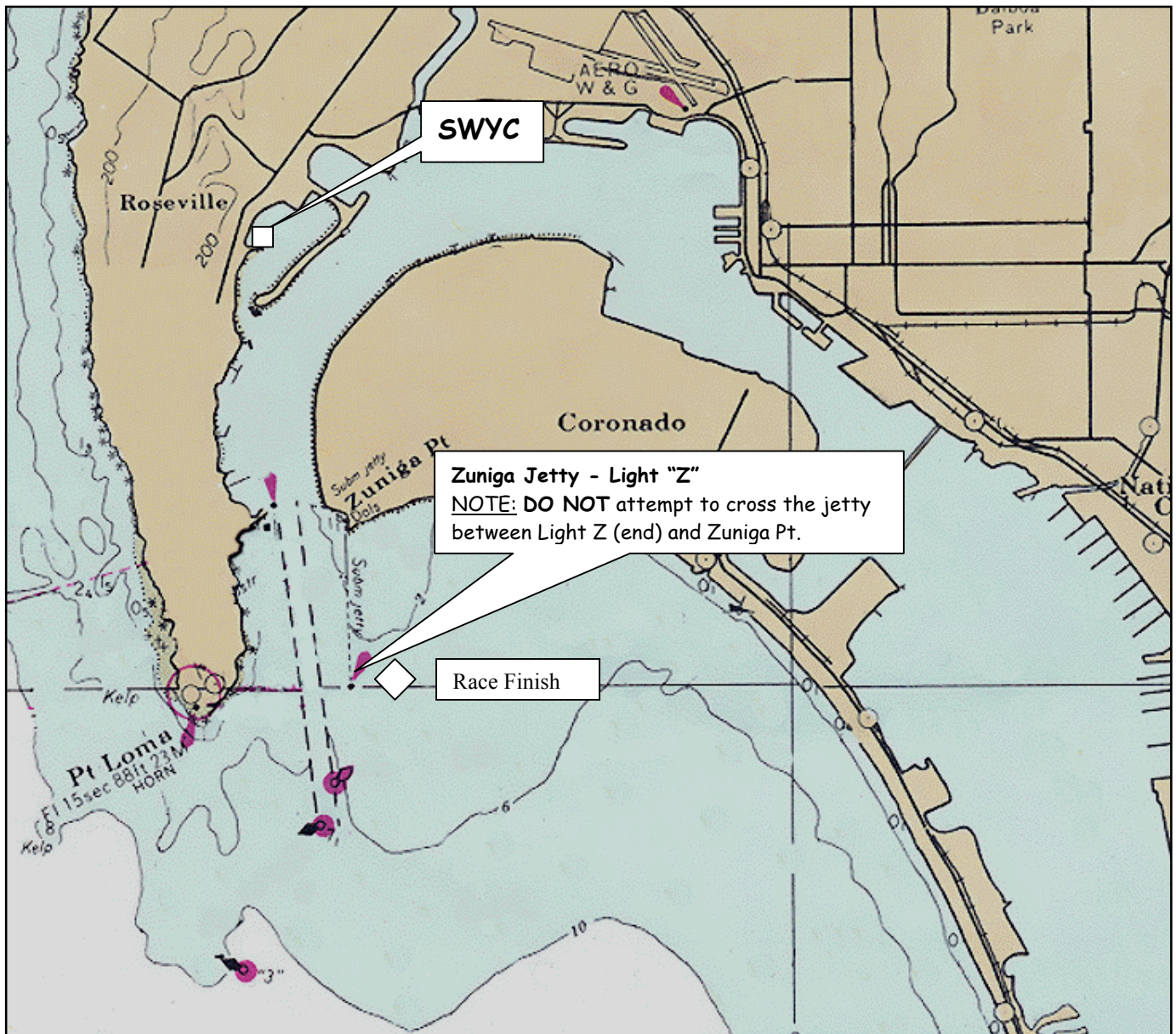
Note: Code Flag “I” is intentionally omitted.

APPENDIX "B"
CLASSES / HANDICAP BREAKS / COURSE / START CLASS FLAG: TO BE ANNOUNCED BY 1700 HRS
WEDNESDAY APRIL 6TH 2011 ON OUR WEBSITE AT WWW.THEBORDERRUN.ORG

Class	Handicap Break	Course	Start Class Flag
		Long	
		Short	
		Sprint	

The Border Run Long and Short San Diego Course Finish

April 9 - 10, 2011



**2011 BORDER RUN
14NM SPRINT COURSE FINISH
DANA POINT, CA**

