



INTERNATIONAL MELGES²⁴
2010 ATLANTIC COAST CHAMPIONSHIP
OCTOBER 15-17, 2010

DAVIS ISLAND YACHT CLUB
TAMPA, FLORIDA

SAILING INSTRUCTIONS

1. RULES

- 1.1 The regatta will be governed by the *rules* as defined in *The Racing Rules of Sailing*.
- 1.2 The Equipment Rules of Sailing will apply.
- 1.3 Rule 78.2 is changed to say "If the required measurement certificate is not produced before a boat races, the boat may race provided that the race committee receives a statement signed by the person in charge that a valid certificate exists."

2. NOTICES TO COMPETITORS

- 2.1 Notices to competitors will be posted on the official notice board located on the west exterior wall on the lower level of the Clubhouse.
- 2.2 The race committee will use VHF channel 68 to communicate with competitors on the water.

3. CHANGES TO SAILING INSTRUCTIONS

Any change to the sailing instructions will be posted before 0830 on the day it will take effect, except that any change to the schedule of races will be posted by 2000 on the day before it will take effect.

4. SIGNALS MADE ASHORE

- 4.1 Signals made ashore will be displayed from the flagpole at the west end of the property.
- 4.2 When flag AP is displayed ashore, '1 minute' is replaced by 'not less than 45 minutes' in the race signal. This changes Race Signal AP.

5. RACING AREA

The racing area will be on Hillsborough Bay approximately 1-2 miles south of the Clubhouse, as shown in Attachment I.

6. SCHEDULE OF RACES

Friday

1400 Practice racing

Saturday and Sunday

0955 First warning signal, multiple races to follow.

No warning signal after 1400 on Sunday.

Seven races are scheduled.

7. CLASS FLAG

The class flag will be white with a Melges²⁴ logo.

8. THE COURSES

8.1 The diagrams in Attachment II show the courses, including the approximate angles between legs and the order in which marks are to be passed.

8.2 If only one leeward mark is present it shall be rounded to port.

8.3 The approximate magnetic bearing and distance in nautical miles to the first mark will be displayed from the race committee signal boat prior to the warning signal for each race.

8.4 Course display example:

5
1.2

Five legs, not including the leg from mark 1 to 1a, finishing to windward

1.2 miles from starting line to first mark



Approx magnetic bearing to weather mark



9. MARKS

- 9.1 Windward and leeward marks will be yellow inflatables. Finish and offset marks will be small orange balls. Start mark will be a green inflatable.
- 9.2 New marks, as provided in SI 12, will be orange inflatables.

10. THE START

The starting line will be between a staff displaying an orange flag on the race committee signal boat at the starboard end and the course side of a port end starting mark.

11. RECALLS

- 11.1 The race committee will hail the sail numbers of OCS boats after the starting signal, using VHF.
- 11.2 When a starting penalty of rule 30 is in effect, the race committee will hail boats that are OCS, using VHF, during the minute before the start as well as after the start.
- 11.3 Lack of hail, the failure of any boat to hear the hail, the timeliness or the order of such hails shall not be considered an improper action or omission of the race committee under rule 62.1(a).

12. CHANGE OF THE NEXT LEG OF THE COURSE

To change the next leg, the race committee will lay a new mark (or move the finishing line) and remove the old mark as soon as practicable. When in a subsequent change a new mark is replaced, it will be replaced by an original mark.

13. THE FINISH

The finishing line will be between a staff displaying an orange flag on a race committee boat and the course side of the finishing mark.

14. PENALTY SYSTEM

Rule 44.1 is changed so that the Two-Turns Penalty is replaced by the One-Turn Penalty.

15. TIME LIMITS

- 15.1 The time limit for the first boat in each race is 2 hours.
- 15.2 Boats still racing more than 30 minutes after the first boat sails the course and finishes will be scored TLE without a hearing and will receive two more points than the number of finishers. This changes RRS 35, 63.1, A4, A5 and A11.

16. PROTESTS AND REQUESTS FOR REDRESS

- 16.1 Protest forms are available at the Regatta Room. Protests shall be delivered there within 60 minutes after the race committee finish boat docks. The docking time will be posted on the Official Notice Board.

- 16.2 Notices will be posted within 15 minutes after the protest time limit to inform competitors of hearings in which they are parties or named as witnesses. Protests will be heard in the approximate order of receipt in the Regatta Room.

17. SCORING

- 17.1 When fewer than 5 races have been completed, a boat's regatta score will be the total of her race scores.
- 17.2 Three completed races are required for this regatta.

18. SAFETY

- 18.1 Prior to the warning signal for the first race of each day in which it intends to compete, each boat is requested to check in by VHF or sail by the race committee signal boat and hail its sail number.
- 18.2 A boat retiring from a race or leaving the racing area early shall promptly notify the race committee either by hail, over VHF, or by telephone to the Clubhouse at (813) 251-1158.

19. REPLACEMENT OF CREW OR EQUIPMENT

- 19.1 Substitution of competitors will not be allowed without prior approval of the protest committee.
- 19.2 Substitution of damaged or lost equipment will not be allowed unless approved by the protest committee or, if on the water, by the race committee. Requests for substitution shall be made at the first reasonable opportunity.

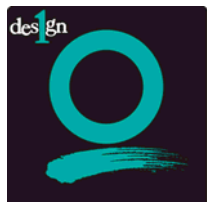
20. DISCLAIMER OF LIABILITY

Competitors participate in the regatta entirely at their own risk. See RRS 4, Decision to Race. The organizing authority will not accept any liability for material damage or personal injury or death sustained in conjunction with or prior to, during, or after the regatta.

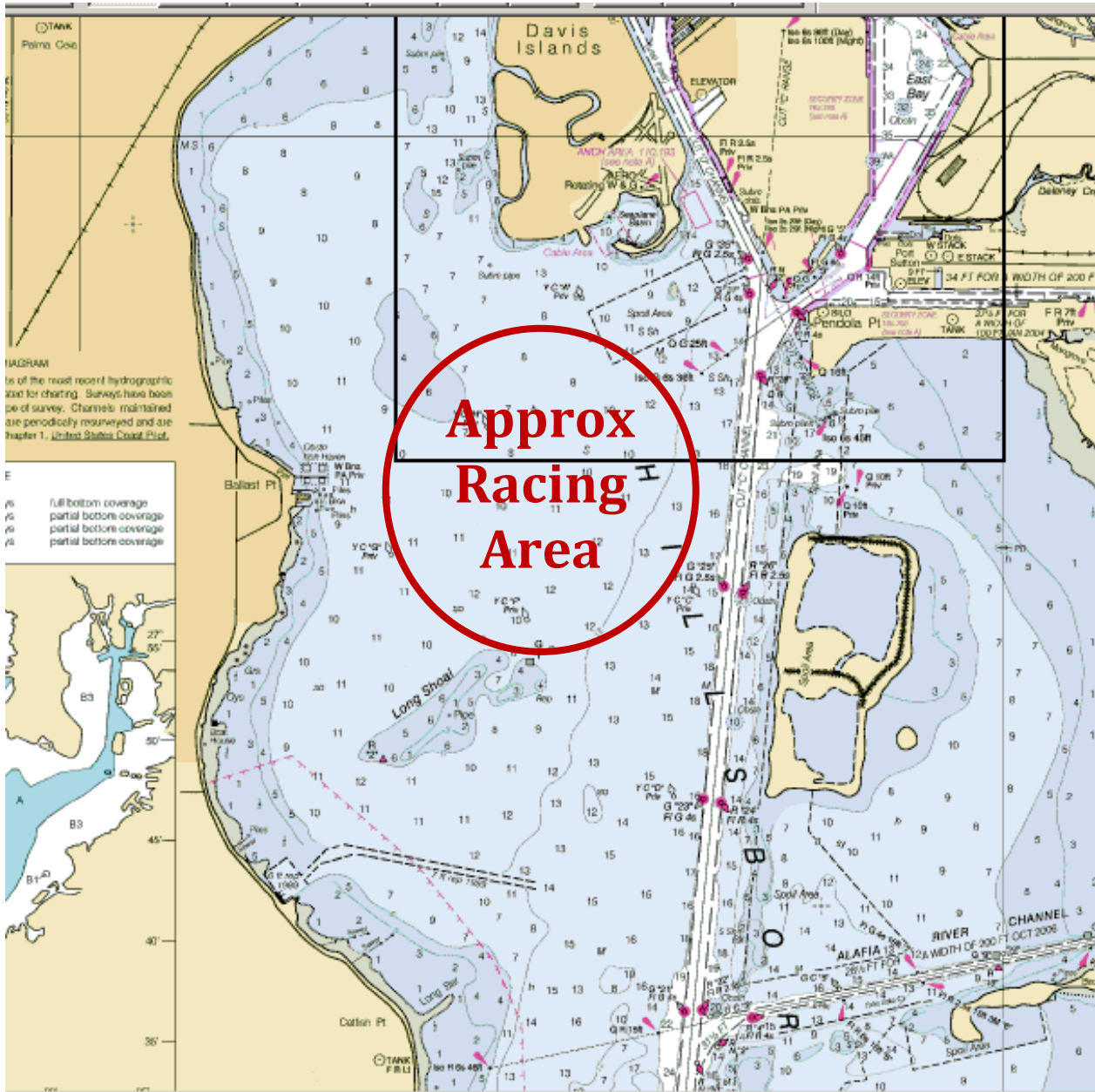
21. PRIZES

- 21.1 Prizes will be given to the top four boats in the overall results.
- 21.2 Prizes will be given to the top three Corinthian boats, as defined in the Notice of Race.

See Notice of Race for:
LAUNCHING AND BERTHING
HAUL-OUT RESTRICTIONS
DIVING EQUIPMENT AND PLASTIC POOLS
RADIO COMMUNICATION
INSURANCE



Attachment I – Approximate Racing Area



Coral Reef Sailing Apparel

The best in sailing apparel and outerwear



Attachment II – Sample Course Diagrams

Course 4	Course 5
<p>Start, 1 (port), 1a (port), between 2S and 2P, 1(port), 1a (port), finish</p>	<p>Start, 1 (port), 1a (port), between 2S and 2P, 1(port), 1a (port), between 2S and 2P, finish</p>

Other possible courses:

Course 3: Start - 1 - 1a - Gate – Finish (Upwind)

Course 6: Start - 1 - 1a - Gate - 1 - 1a - Gate- 1 - 1a – Finish (Downwind)

Course 7: Start – 1 – 1a – Gate – 1 – 1a – Gate- 1 – 1a – Gate – Finish (Upwind)

