

**THE BORDER RUN INTERNATIONAL SAILING EVENT™**  
**March 10-11, 2012**  
**XS Racing, South Shore, Dana Point and Silver Gate Yacht Clubs**  
**Newport Beach, CA**

**SAILING INSTRUCTIONS**

The Border Run International Sailing Event™ is brought to you by XS Racing. The organizing authority for The Border Run International Sailing Event™ is South Shore Yacht Club (SSYC) P.O. Box 1174, Newport Beach, CA 92659.

**1. RULES**

**1.1** This race will be governed by the rules as defined in the International Sailing Federation (ISAF) Racing Rules of Sailing (RRS) 2009-2012.

**1.2** The following prescriptions of the United States national authority, US SAILING, that will apply are stated in full below:

**1.2.1** Rule 68 – Damages. US SAILING prescribes that:

(a) A boat that retires from a race or accepts a penalty does not by that action alone admit liability for damages.

(b) A protest committee shall find facts and make decisions only in compliance with the rules. No protest committee or US SAILING Appeals authority shall adjudicate any claim for damages. Such a claim is subject to the jurisdiction of the courts.

(c) A basic purpose of the rules is to prevent contact between boats. By participating in an event governed by the rules, a boat agrees that responsibility for damages arising from any breach of the rules shall be based on fault as determined by application of the rules, and that she shall not be governed by the legal doctrine of “assumption of risk” for monetary damages resulting from contact with other boats.

**1.2.2** Rule 76.1 – Exclusion of Boats or Competitors. US SAILING prescribes that an Organizing Authority or race committee shall not reject or cancel the entry of a boat or exclude a competitor eligible under the Notice of Race and Sailing Instructions for an arbitrary or capricious reason, or for the reason of race, color, national origin, gender, sexual orientation, or age.

**1.2.3** Rule 76.3 – Exclusion of Boats or Competitors – US SAILING prescribes that a boat whose entry is rejected or cancelled or a competitor who is excluded from a race or series shall, upon written request, be entitled to a hearing conducted by the protest committee under rules 63.2, 63.3, 63.4 and 63.6.

**1.2.4** Appendix F, Procedure for Appeals and Requests – See US SAILING RRS Appendix F for full text.

**1.3** For boats with movable ballast, rule 51 is waived, but only with respect to the shifting of their declared and measured ballast, and rule 52 is also waived, but only with respect to the shifting of that ballast. All ballast systems shall also be capable of manual operation.

**1.4** National letters of country identification are not required. This changes rule 77 and rule G.1. (b).

**1.5** The notification requirements of rule 61.1 are satisfied for all filed protests other than Part 2 RRS protests by posting protests pending on either the Official Race Results Board or the Official Notice Board adjacent to the Official Results Board, or both. This changes rule 61.1.

**1.6** The Performance Handicap Racing Fleet (PHRF) Marine Industry Racer (MIR) rule shall not apply to any fleets in this event.

**1.7** All boats must meet US Coast Guard requirements appropriate to their vessel.

**1.8** All (PHRF) mono-hulls shall comply with the PHRF Category 2 Standard Equipment list.

**1.8.1** All (XS Racing) mono-hulls shall comply with XS Racing equipment list.

**1.9** All multi-hulls shall comply with their class equipment and requirements list as either:

**1.9.1** ORCA Ocean Racing Catamaran Equipment List.

**1.9.2** XS Racing Equipment List.

**Beach Cat multi-hulls**

**1.9.3** In addition to (1.9, 1.12, 1.13, 1.14) must carry running lights (minimum clip on), 2 paddles or 2 hp motor, flare kit, die marker and each crew member must wear a USCG approved life preserver with attached strobe light, one hand held flare, whistle and die marker.

**THE BORDER RUN INTERNATIONAL SAILING EVENT™**  
**March 10-11, 2012**  
**XS Racing, South Shore, Dana Point and Silver Gate Yacht Clubs**  
**Newport Beach, CA**

**SAILING INSTRUCTIONS**

**1.10 All Shadow Boat Class Entries must:**

**1.10.1** Submit a sailing resume showing off-shore over night experience.

**1.10.2** Supply their own shadow boat that is capable of acting as a First Responder Rescue Assistance Vessel.

**1.10.3** Skipper and all crew must be 18 years of age or older.

**1.10.4** Each entry (Skipper and all Crew) must turn in a signed liability release form.

**1.10.5** In addition to (1.10, 1.12, 1.13, 1.14) must carry running lights (minimum clip on), 2 paddles or 2 hp motor, flare kit, die marker, SPOT or other personal locator beacon device and each crew member must wear a USCG approved life preserver with attached strobe light, one hand held flare, whistle and die marker.

**1.11** Cruising Class boats may select the Long or Short course and will be allowed to use their engines during the race (see Addendum C).

**1.12** In addition to complying with their class and equipment rules:

**1.12.1** All boats shall carry a GPS.

**1.12.2** All boats shall carry a hand held VHF marine band radio.

**1.12.3** All boats shall carry one cell phone.

**1.13** All boats (other than shadow boat class or Sprint course racers) shall have a minimum LOA of 18 ft.

**1.14** All boats racing PHRF classes shall have a current, valid PHRF Rating issued by the fleet handicapping authority of the classes and sub-classes in which they are competing. Boats with a PHRF rating shall present their racing certificate.

**1.14.1** Boats without a rating will be assigned a rating by XS Racing.

**2. ADVERTISING**

**2.1** Competitor advertising will be restricted as follows: ISAF Regulation 20.9 will be modified to allow advertising of a company if the boat owner and skipper are major shareholders of the company advertising.

**2.2** Boats may be required to display advertising supplied by the Organizing Authority in accordance with ISAF Regulation 20.4.

**3. CHANGES TO SAILING INSTRUCTIONS**

**3.1** Any changes to the Sailing Instructions will be posted at SSYC, on the SSYC ([www.southshoreyc.org](http://www.southshoreyc.org)) website and [www.theborderrun.org](http://www.theborderrun.org) web site by 5:00 PM, Friday, March 9<sup>th</sup>, 2012.

**4. SIGNALS MADE FROM SHORE**

**4.1** If a start postponement causes a return to shore and the "AP" flag is flown from ashore at South Shore Yacht Club, the "1 minute" will be replaced by "60 minutes".

**5. ALL CLASSES - SINGLE START**

**5.1** See Appendix "A" for Class breaks / Gate Assignments / Course assignments.

**5.2** All boats and classes will start simultaneously with 5 "gates" or "segments" based on rating and course.

**5.3** All entrants are presumed to have checked in to the Race Committee by registering to race. If a registered entrant chooses not to compete for whatever reason, they must notify the Race Committee by cell phone text message to (714) 815-7035 or (678) 296-4970.

**5.4** Entrants should use the following text format for choosing not to compete: DNC - Sail Number - Boat Name. You will be acknowledged with a text message response of, "Received" and scored "DNC" (Did Not Compete).



**THE BORDER RUN INTERNATIONAL SAILING EVENT™**  
**March 10-11, 2012**  
**XS Racing, South Shore, Dana Point and Silver Gate Yacht Clubs**  
**Newport Beach, CA**

**SAILING INSTRUCTIONS**

**6. INSPECTIONS**

- 6.1 XS Racing /SSYC may inspect any (non-shadow boat class) mono-hull boat that has finished the race for compliance with the PHRF Standard Equipment List for Category 2 Races, US Coast Guard Equipment, and other equipment referenced in Sailing Instructions 1.7 through 1.12.
- 6.2 XS Racing / SSYC may inspect a (non-shadow boat class) multi-hull boat that has finished the race for compliance with the ORCA or XS Racing Equipment List for Coastal Race, US Coast Guard Equipment, and the GPS referenced in NOR 1.9
- 6.3 XS Racing / SSYC may inspect any XS Racing Beach Cat and / or Shadow boat class boat that finished the race for compliance with the equipment and requirements set forth in the Sailing Instructions.
- 6.4 Boats failing to comply with their Equipment List requirements may be protested and a penalty including disqualification may be imposed.

**7. THE COURSES**

The three courses are defined as the Long, Short, and Sprint as set below:

- 7.1 **Long Course** racers will start off of Balboa Pier in Newport Beach, CA and sail to the Coronado Islands, leaving the small island (Coronado del Norte) to Port and finish 500 yards east of Zuniga Jetty light "Y". Finish as directed in Paragraph 9.
- 7.1.1 For scoring purposes, the handicap distance is 91 nautical miles.
- 7.2 **Short Course** racers will start off of Balboa Pier in Newport Beach, CA and sail to the San Diego Entrance Whistle Buoy leaving "SD" whistle buoy (labeled SD, at 32° 37.34' N by 117° 14.75' W) to Port and finish 500 yards east of Zuniga Jetty light "Y". Finish as directed in Paragraph 9.
- 7.2.1 For scoring purposes, the handicap distance is 70 nautical miles.
- 7.3 XS Racing Beach Cat and Shadow Boat classes will sail the short course.
- 7.4 **Sprint Course** racers will start off of Balboa Pier in Newport Beach, CA and race to the Dana Point Harbor leaving to port the Dana Point red whistle buoy SJR (FLR 2.5 sec.) labeled as "W" at 33° 27.30' N by 117° 43.30' W. Finish as directed in Paragraph 9.
- 7.4.1 For scoring purpose, the handicap distance is 14 nautical miles.

**8. THE START**

- 8.1 The Border Run Race will be started using Rule 26 with the 1<sup>st</sup> warning signal made 10 minutes before the starting signal. All boats shall be west of the starting line by 11:15 AM PT.
- 8.2 There will be a single start for all boats, all classes and all courses along a segmented line with boats assigned to five gates based on ratings and courses (see Appendix A to these Sailing Instructions, which will be posted on race web sites).
- 8.3 Orange flags will be displayed simultaneously on all Race Committee signal boats with one sound at least five (5) minutes before the first warning signal in order to alert boats that the race starting sequence will begin soon. The first warning will be given at 11:20 AM PT with the start by GPS clock at 11:30 AM PT. All four Race Committee signal boats will make the RRS 26 starting sequence signals and sounds. A cannon will fire one round at the first warning and at the start.
- 8.4 The starting line will be a line originating at an orange tetrahedron on its inshore end, connecting each of the orange flags on the Race Committee signal boats, successively, and ending at the orange tetrahedron on the most offshore end. There will be four intermediate Race Committee signal boats along the starting line to define line segments for the A and B gates (Long Course); C and D gates (Short Course) and E gate (Sprint Course) proceeding in order from offshore to most inshore.
- 8.5 Individual and group recalls will be made in accordance with RRS 29.1 and 29.2 respectively. The Race Committee will attempt to hail sail numbers of individually recalled boats on VHF Channel 68; however, neither the timing of this hail, equipment failure or the failure of a yacht to hear the hail shall be cause for redress from the protest committee.



**THE BORDER RUN INTERNATIONAL SAILING EVENT™**  
**March 10-11, 2012**  
**XS Racing, South Shore, Dana Point and Silver Gate Yacht Clubs**  
**Newport Beach, CA**

**SAILING INSTRUCTIONS**

**9. THE FINISH**

**9.1** When the lead yacht of the leading class in the Long and Short Courses is within two hours of the finish she is requested to so advise the Race Committee.

**9.2** The Long and Short Course finish line shall be approximately 500 yards east (magnetic) of the Zuniga Jetty light "Y" that is at approximately 32:40.19N by 117:13.10W. The "Z" light marks the south end of Zuniga Jetty and the "Y" light is the next light to the north.

**9.3** The Long and Short Course finish line shall be between a staff displaying an orange flag on the Race Committee Boat at the starboard end and the yellow tetrahedron mark at the port end. A proper finish will leave the Race Committee boat to starboard. After sunset, the Race Committee shall attempt to display a yellow strobe light and illuminate the tetrahedron mark.

**9.4** If for any reason, the Race Committee boat is not on station at the finish, boats shall take their own time when the position of light "Y" bears 270 deg. Magnetic and is within 500 yards. Times so taken must be corrected to GPS time and reported to the Race Committee by calling (714) 815-7035 between 0900 and 1500 on Sunday, March 10, 2012. Finishers shall note sail numbers of other boats finishing at approximately the same time and complete the Finish Card. Finish Cards can be deposited in the Letter Box at Silver Gate Yacht Club.

**RACERS ARE CAUTIONED TO PASS SOUTH OF THE "Z" LIGHT AT THE END OF THE ZUNIGA JETTY AS THE JETTY IS SOMETIMES SUBMERGED BUT SHALLOW, EVEN AT HIGH TIDE.**

**9.5** The Sprint Course finish line at Dana Point shall be approximately 150 yards off the Dana Point jetty at a green lighted buoy "G-1" (FLG 2.5 sec.) at approximately 33° 27.10' N by 117° 41.90' W.

**9.6** The Sprint Course finish line shall be between a staff displaying an orange flag on the Race Committee Boat at the starboard end and the course side of the green light buoy "G-1" mark at the port end. A proper finish will leave the Race Committee boat to starboard. **DO NOT CONFUSE this buoy with the entrance light to Dana Point harbor.**

**10. TIME LIMIT**

**10.1** The Time Limit for the Long and Short Courses is 1400 hours, Sunday, March 11, 2012. Daylight Savings Time goes into effect at 2:00 AM, Sunday, March 11<sup>th</sup>, 2012. All boats not finishing before the Time Limit will be scored Did Not Finish (DNF). This changes Rule 35.

**10.2** The Time Limit for the Sprint Course is 1700 hours, Saturday, March 10, 2012. All boats not finishing before the Time Limit will be scored Did Not Finish (DNF). This changes Rule 35.

**10.3** All boats that have not or will not be finishing by the time limit are required to notify the race committee of their location and intentions by speaking with the race committee on VHF Channel 68 or via phone at (714) 815-7035.

**11. RETIREMENTS**

**11.1** All vessels that retire from the race shall notify the race committee as soon as practical (but in all cases prior to the finish time limit) by notifying the race office by phone at (714) 815-7035 or (678) 296-4970 or by speaking with race committee on VHF Channel 68.

**12. PENALTY SYSTEM**

Rule 44.3 will be used for Part 2 violations. A one (1) hour time adjustment penalty can be taken in lieu of a non disqualifying penalty for Long and Short Course entries. A 10-minute time adjustment penalty can be taken in lieu of a non disqualifying penalty for Sprint Course entries.

**13. PROTESTS AND REQUESTS FOR REDRESS**

**13.1** All protests on the Long and Short Course must be filed (in writing) at the Race Committee desk at Silver Gate Yacht Club by (the earlier of) 2 hours after the protesting boats finish or 1 hour after the race time limit.

**13.2** All protests on the Sprint Course must be filed (in writing) at the Race Committee desk at Dana Point Yacht Club by (the earlier of) 2 hours after the protesting boats finish or 1 hour after the race time limit.

**THE BORDER RUN INTERNATIONAL SAILING EVENT™**  
**March 10-11, 2012**  
**XS Racing, South Shore, Dana Point and Silver Gate Yacht Clubs**  
**Newport Beach, CA**

**SAILING INSTRUCTIONS**

**14. SCORING SYSTEM**

**14.1** For trophies awarded on Corrected Time, positions will be calculated as follows:

**14.1.1** IRC and ORR time allowances will be calculated using time-on-time scoring.

**14.1.2** All other Corrected Time allowances will be calculated using time-on-distance scoring, based on the boat's PHRF Base Off Wind Course (OWC) Ratings, PHRF non-Spinnaker Offsets as described in instruction 25, and the races' handicap distances.

**14.1.3** Boats with the lowest Corrected Time in their class (after application of time penalties, if any) will be scored in first place.

**14.1.4** Dinghies in the Sprint Course will be scored using Portsmouth ratings.

**14.2** For trophies awarded on Elapsed Time:

**14.2.1** Results will be calculated using the single start time and actual finish time.

**14.2.2** Boats with the lowest Elapsed Time (after application of time penalties, if any) will be scored in first place.

**15. PRIZES**

Trophies for Long and Short Courses will be awarded at the Trophy Party after the race on Sunday, March 11, 2012 at Silver Gate Yacht Club in San Diego at 2091 Shelter Island Drive. The Trophy presentation will begin at 1600 hours.

**15.1** The number of trophies is based on the number of starters as follows:

1 – 5 Starters = 2 trophies

6 – 9 Starters = 3 trophies

10 – 14 Starters = 4 trophies

15+ Starters = 5 trophies

Trophies for Sprint Course racers will be awarded at the Trophy Party after the race on Saturday, March 10<sup>th</sup>, 2012 at Dana Point Yacht Club in Dana Point at 24399 Dana Drive. The trophy presentation will begin at 1800 hours.

**16. INSURANCE**

Each participating boat shall be insured with valid combined single limit watercraft liability insurance in an amount not less than \$300,000 personal injury and personal property damage of \$100,000.

**17. DISCLAIMER OF LIABILITY**

Competitors participate in this Race entirely at their own risk. Please see rule 4 (Decision to Race). The Organizing Authority will not accept liability for damage or personal injury or death sustained in conjunction with, prior to, during, or after this Race. Each boat owner must sign a race entry form releasing all liability on the part of race organizers, their sponsors, contractors and anyone affiliated with the event.

**18. RIGHT TO USE NAME AND LIKENESS**

By participating in The Border Run International Sailing Event™, a competitor automatically grants to the organizers and its sponsors the right, in perpetuity, to make, use, and show from time to time at their discretion, any still or motion pictures and live, taped, or filmed television and other reproductions of him or her without compensation.

**19. CONTACT INFORMATION**

The Race Committee will monitor and make any on the water announcements on VHF marine channel 68. After the start, the Race Committee can be reached at (714) 815-7035 or (678) 296-4970 and channel 68 for retirements.

**20. RACE CANCELLATION**

At its discretion, the Race Committee may abandon the race. The Committee Boats will display appropriate signals (RRS 32 and RRS Race Signals) and make radio announcements on Channel 68. Whether or not the Race Committee has abandoned the race, it is the responsibility of the skipper of each boat to determine if the weather



**THE BORDER RUN INTERNATIONAL SAILING EVENT™**  
**March 10-11, 2012**  
**XS Racing, South Shore, Dana Point and Silver Gate Yacht Clubs**  
**Newport Beach, CA**

**SAILING INSTRUCTIONS**

conditions are a threat to the safety of the boat or crew, and if so, whether to participate or continue racing (RRS 4).

**20. ADDITIONAL INSTRUCTIONS FOR CRUISING CLASSES**

Paragraphs 21 through 25 apply only to Cruising Class boats.

**21. CRUISING CLASS ADJUSTMENTS**

In accordance with Appendix E, paragraph 4.0 of the PHRF Class Rules, a Cruising Class boat's Race Rating shall consist of the boat's PHRF base Off Wind Course (OWC) Rating as shown on the valid Rating Certificate, along with the adjustments shown in Appendix D of the PHRF Class Rules.

**22. CRUISING CLASS ENGINE USE**

22.1 An engine may be used for charging batteries, pumping bilges or supplying power for weighing anchor or refrigeration while in neutral. In addition, Cruising Class participants may use an engine for propulsion within the limitations stated below.

22.2 Motoring time, also referred to as engine in-gear propulsion time, is restricted to between 2000 hours (8:00 PM) and 0800 hours (8:00 AM) during the race.

22.3 A vessel's speed in knots may not exceed its hull speed while the engine is in-gear propelling the boat. Hull speed is defined as  $1.34 \times \text{Square Root (LWL)}$ , where "LWL" is the length of the waterline in feet.

**22.4 RECORDING REQUIREMENTS**

20.4.1 The skipper shall record on the 2012 Border Run Cruising Class Engine Log (as shown on Addendum C) both the GPS Latitude and Longitude position of the boat (to the second decimal place of a minute) and the GPS time (to the nearest second) on each occasion when the engine was put in-gear and was taken out of gear. This changes Appendix D, paragraphs 2.0(c), 2.0(f), 2.0(g) of the PHRF Class Rules.

22.4.2 Record a minimum of 30 minutes each time the engine is put in gear. This changes Appendix D, paragraph 2.0(f) of the PHRF Class Rules.

22.4.3 Record the total engine in-gear propulsion time in MINUTES

**22.5 FILING THE BORDER RUN CRUISING CLASS ENGINE LOG**

22.5.1 All Cruising Class participants that finish shall file a 2012 Border Run Cruising Class Engine Log, as shown in Addendum C of these Sailing Instructions, even if the engine is not used. The Cruising Class Engine Log is available on line at [www.theborderrun.org](http://www.theborderrun.org). The Cruising Class engine log must be submitted at The Border Run Race Headquarters at Silver Gate Yacht Club within two (2) hours of the boat's finish time, or by 1500 hours (3:00 PM), whichever is earlier.

22.5.2 A Cruising Class boat failing to correctly complete and file her 2012 Border Run Cruising Class Engine Log, may be protested by the Race Committee and may be penalized up to a Disqualification (DSQ) by the Protest Committee following a hearing.

22.5.3 ENGINE USE IMPACT ON FINAL CORRECTED TIME – An Adjustment equal to  $(\text{IN-GEAR-TIME} \times 0.40 \times \text{Square Root (LWL)})$  will be added to the Corrected Time to produce a Final Corrected Time.

**23. CRUISING CLASS PERMITTED EQUIPMENT**

23.1 Whisker poles may be used and are limited in length to 1.4 times the "J" measurement. One end shall be attached to the foremost mast. This changes Appendix D, paragraph 3.0 (c) of the PHRF Class Rules.

23.2 Double headsails, double head rigs and multi-masted vessels are allowed

23.3 Power winches are allowed. This changes RRS 52

23.4 Steering vanes and autopilots are allowed. However, it is the responsibility of the skipper to ensure that someone is always in position to take command of the boat in an emergency.

**24. OTHER CRUISING CLASS REQUIREMENTS AND INFORMATION**

24.1 Competitors in the Cruising Classes are reminded that under the International Regulations for Preventing Collisions at sea (COLREGs) that they are required to exhibit a white masthead light aloft when under power.

**THE BORDER RUN INTERNATIONAL SAILING EVENT™**  
**March 10-11, 2012**  
**XS Racing, South Shore, Dana Point and Silver Gate Yacht Clubs**  
**Newport Beach, CA**

**SAILING INSTRUCTIONS**

- 24.2 Rig hands for the "P" and "E" measurement are not required. However, the mainsail must measure to the reported dimensions.
- 24.3 Sail dimensions are not required to be marked on the sails.
- 24.4 The U.S. SAILING or foreign National Authority or Class sail number may be displayed from the lifelines. If so displayed, they shall be displayed on both sides of the boat aft of the mainmast in a visible location. Minimum height of letters/numbers shall be 300mm (12 inches). This changes RRS Appendix G.
- 24.5 It is the responsibility of the skipper to notify the Organizing Authority (South Shore Yacht Club) consistent with listed instructions published in the Sailing Instructions – prior to racing – of ANY changes in equipment affecting the Adjustments referenced in SI 21 Cruising Class Adjustments. Additionally, skippers whose boat has a current, valid PHRF Rating shall notify PHRF of any changes to a boat's rated configuration. Failure to notify the Organizing Authority or PHRF, where required, may result in a protest and race disqualification and may further subject the skipper to a Rules Violation penalty as described in Appendix G of the PHRF Class Rules.
- 24.6 Cruising boats finishing under power (motoring) shall have the mainsail raised. This changes Appendix D, paragraph 2.0(g) of the PHRF Class Rules. A boat failing to have the mainsail raised, may be protested by the Race Committee and may be penalized by having sixty (60) minutes added to her elapsed time by the Protest Committee following a hearing.

**25. CRUISING CLASS PHRF NON-SPINNAKER OFFSET**

The PHRF Non-Spinnaker Offset shall be added only to boats racing in one of the Non-Spinnaker Cruising Class. The Race Rating for a boat racing in a Non-Spinnaker Cruising class shall be the PHRF Base OWC Rating + PHRF Non-Spinnaker Offset + any Cruising Class Adjustment.

<b>C R U I S I N G</b>	To enter a Cruising Class you must satisfy the Eligibility Requirements in the NOR. The assigned PHRF of Southern California (PHRF/SC) base Off-Wind Course (OWC) rating you entered above will be adjusted for this race based on how your vessel is equipped.			
	<b>CRUISING CLASS EQUIPMENT</b>			
	Rating Adjustments that apply to your boat			
	<b>Propeller</b> <input type="checkbox"/> (+6) Two Blade Fixed	<b>Mylar / Kevlar</b> <input type="checkbox"/> (-6) Mylar or Kevlar headsail		
	<input type="checkbox"/> (+9) Three Blade Fixed	<input type="checkbox"/> (-6) Mylar or Kevlar mainsail		
	<b>Head Sail</b> <input type="checkbox"/> (-6) Oversized/Dacron (>150%)	<b>Roller Furler Gear</b> <input type="checkbox"/> (+6) Roller Furling headsail		
<input type="checkbox"/> (+9) Small/Dacron (<140%)	<input type="checkbox"/> (+9) Roller Furling mainsail			
<b>Enter Total Rating Adjustments</b> <input style="width: 50px;" type="text"/>				



**THE BORDER RUN INTERNATIONAL SAILING EVENT™**  
**March 10-11, 2012**  
**XS Racing, South Shore, Dana Point and Silver Gate Yacht Clubs**  
**Newport Beach, CA**

**SAILING INSTRUCTIONS**

**APPENDIX "A"**  
**CLASSES / HANDICAP BREAKS / STARTING GATE / COURSE**

Class	Handicap Break	Starting Gate	Course
			Long
			Short
			Sprint

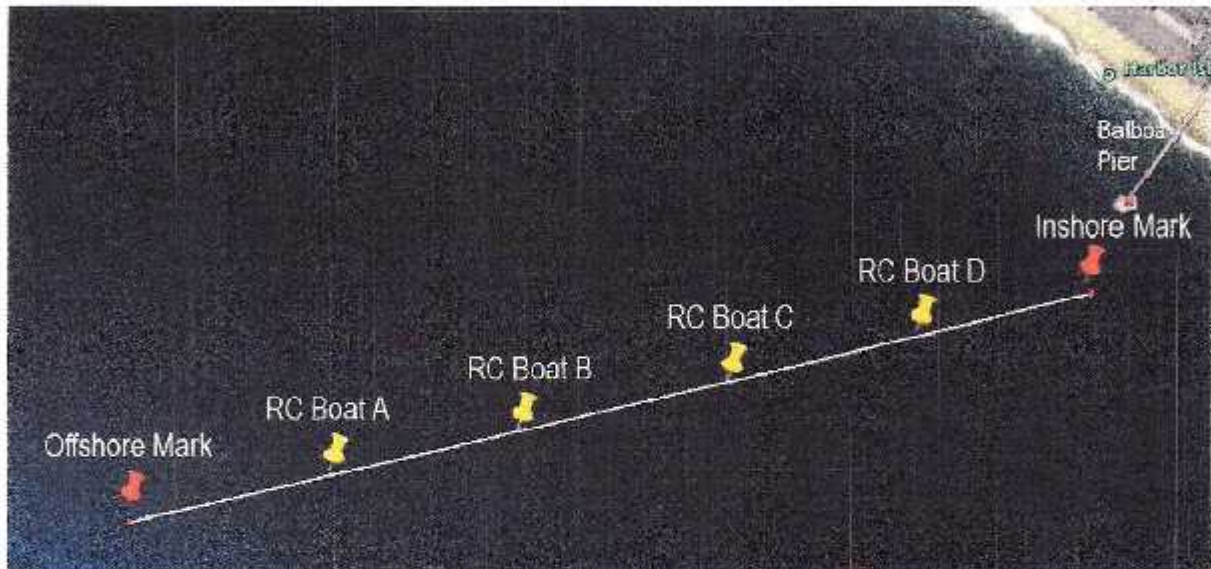
**Appendix A will be available on line at**  
**[www.theborderrun.org](http://www.theborderrun.org) by Wednesday, March 7th**



**THE BORDER RUN INTERNATIONAL SAILING EVENT™**  
March 10-11, 2012  
XS Racing, South Shore, Dana Point and Silver Gate Yacht Clubs  
Newport Beach, CA

**SAILING INSTRUCTIONS**

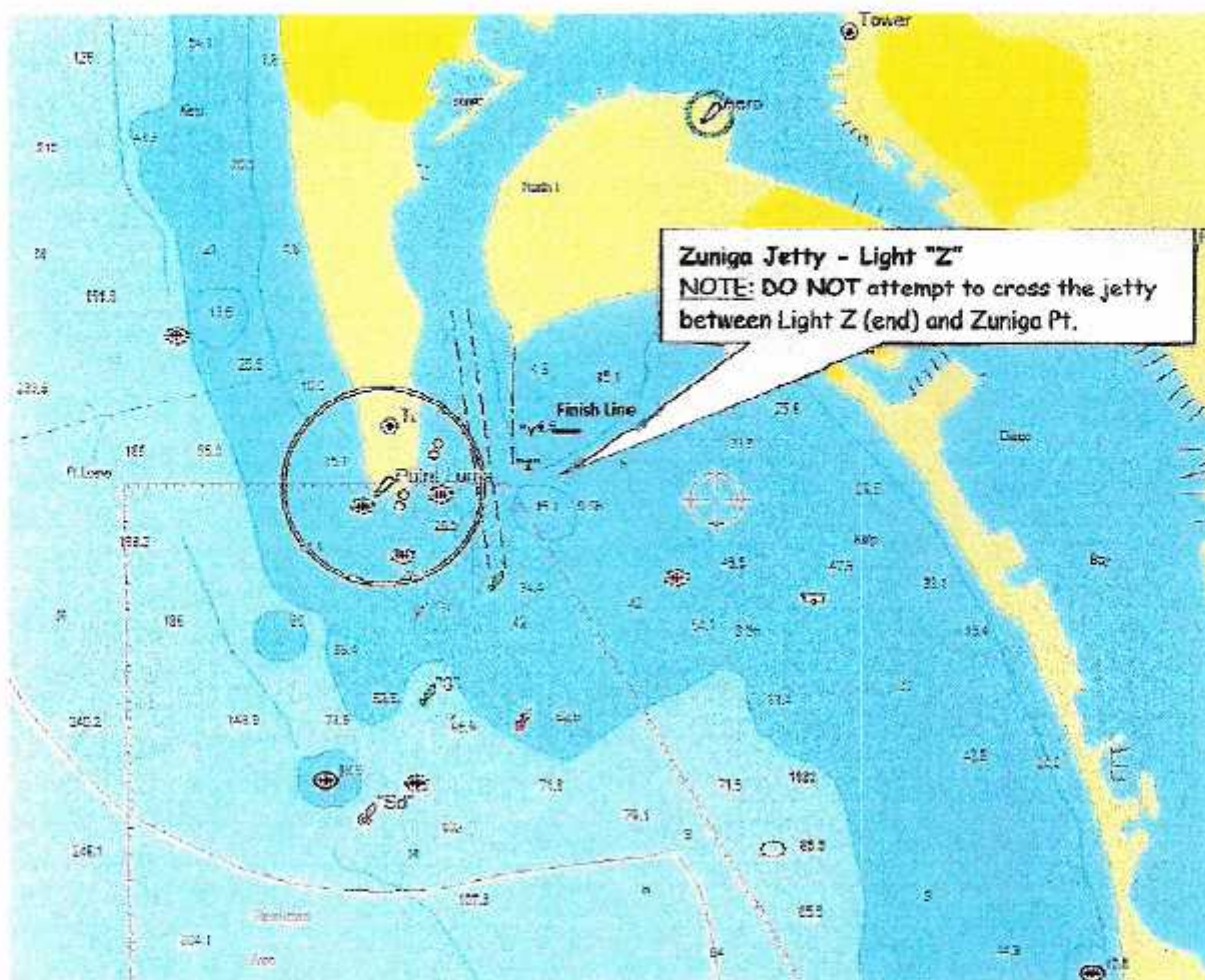
**The Border Run Starting Line**  
Saturday, March 10, 2012



**THE BORDER RUN INTERNATIONAL SAILING EVENT™**  
**March 10-11, 2012**  
**XS Racing, South Shore, Dana Point and Silver Gate Yacht Clubs**  
**Newport Beach, CA**

**SAILING INSTRUCTIONS**

**The Border Run Long/Short Course Finish**  
**March 10-11, 2012**





**THE BORDER RUN INTERNATIONAL SAILING EVENT™**  
**March 10-11, 2012**  
**XS Racing, South Shore, Dana Point and Silver Gate Yacht Clubs**  
**Newport Beach, CA**

**SAILING INSTRUCTIONS**

**The Border Run Dana Point Sprint Course Finish**  
**March 10, 2012**



Google earth

feet 4000  
km 1





## ADDENDUM B - FINISH CARD

BOAT NAME

SAIL NUMBER

FINISHED RACE AT

AM PM ON

### FINISH CARD - ALL COMPETITORS

BOAT NAME	SAIL NO.		MINS/SECONDS	
		was	:	Ahead of us
		was	:	Ahead of us
		was	:	Behind us
		was	:	Behind us

Skipper/Charterer

File your 2012 Finish Card with The Border Run Race Headquarters in the Letter Box at Silvergate Yacht Club within 3 hours of finishing or the filing deadline of 1500 hours on Sunday, March 11, 2012, whichever is earlier.





## ADDENDUM C - CRUISING CLASS ENGINE LOG

BOAT NAME \_\_\_\_\_  
 SAIL NUMBER \_\_\_\_\_  
 FINISHED RACE AT \_\_\_\_\_ AM PM ON \_\_\_\_\_

COMPLETE THE CRUISING CLASS ENGINE LOG EVEN IF YOU DIDN'T USE THE ENGINE.  
 RECORD GPS LATITUDE AND LONGITUDE POSITION OF THE BOAT TO THE SECOND DECIMAL PLACE OF A MINUTE.

IN GEAR OF OUT OF GEAR	DAY	TIME	LATITUDE	LONGITUDE	ENGINE IN GEAR MINUTES
START	3/10	1130 HRS	33 35.81 N	117 54.40 W	
IN GEAR					
OUT OF GEAR					
IN GEAR					
OUT OF GEAR					
IN GEAR					
OUT OF GEAR					
IN GEAR					
OUT OF GEAR					
IN GEAR					
OUT OF GEAR					
IN GEAR					
OUT OF GEAR					
IN GEAR					
OUT OF GEAR					
FINISH			32 40.19 N	117 13.10 W	

Skipper/Charterer	Crew Member One	Crew Member Two

**FILING** - File your 2012 Cruising Class Engine Log with The Border Run Race Headquarters at Silvergate Yacht Club within three (3) hours of finishing or the filing deadline of 1500 hours on Sunday, March 11, 2012, whichever is earlier. The skipper and two crew members shall certify that the Engine In Gear Time and LAT/LON locations reported are true and accurate.

**LIMITATIONS** - Total engine propulsion time is not limited for Cruising Class boats, but the engine in-gear time is restricted to between 2000 hours (8 PM) and 0800 hours (8 AM) during the race. A vessel's speed in knots may not exceed its hull speed while the engine is in-gear propelling the boat. Hull speed is defined as  $1.34 \times \text{Square Root (LWL)}$  where "LWL" is the length of the waterline in feet.