

# 2012 29er Class World Championship

22-28 July 2012

*The Organizing Authority is Lübecker Yacht Club e.V.  
in conjunction with the International 29er Class Association*



## NOTICE OF RACE

### 1 RULES

- 1.1 The regatta will be governed by the rules as defined in *The Racing Rules of Sailing*.
- 1.2 No national prescriptions will apply.
- 1.3 If there is a conflict between languages the English text will take precedence.

### 2 ADVERTISING

- 2.1 Boats may be required to display advertising chosen and supplied by the organizing authority.

### 3 ELIGIBILITY & ENTRY

- 3.1 The regatta is open to all boats of the International 29er Class.
- 3.2 Eligible boats may enter through [www.29erworlds.org](http://www.29erworlds.org).
- 3.3 **Parent/Guardian Declarations:** All helms and crews under 18 years of age during the event shall submit signed Parent/Guardian Declarations either by post or at registration.

### 4 FEES

- 4.1 Entry fee: 350 € if received by 1 July 2012
- 4.2 Entries received after 1 July and before 20 July shall be 450€
- 4.3 The entry fee is non refundable.

### 5 FORMAT OF RACING

- 5.1 The regatta will consist of a qualifying series and a final series.

### 6 SCHEDULE

<b>Day:</b>	<b>Date:</b>	<b>Event:</b>
1	22 July	Registration/Measurement & Inspection
	22 July	Practice race
2	23 July	Qualifying series – 3 races
3	24 July	Qualifying series – 4 races
4	25 July	Qualifying series – 3 races
5	26 July	Final series – 3 races
6	27 July	Final series – 4 races
7	28 July	Final series – 3 races
		Prizegiving & closing ceremony

### 7 MEASUREMENTS

- 7.1 Boats will be inspected for class rules compliance prior to racing (see Schedule).
- 7.2 Only one set of sails, and one forestay, shall be used throughout the regatta.

### 8 SAILING INSTRUCTIONS

- 8.1 The sailing instructions will be available at registration.

## **9 VENUE**

- 9.1 The regatta office is located at the waterfront of the Leuchtenfeld opposite to the square-rigger "Passat" and will be open from Friday, July 20th up to Sunday, July 29<sup>th</sup> from 0800 hrs to 2000 hrs. On Sunday, July 29<sup>th</sup> the race office will close soon after the last prize giving.
- 9.2 Racing will take place on Luebeck Bay with one course in front of the Travemünde shore and another in front of the Priwall shore.
- 9.3 Attachment A shows the approximate location of the racing areas.

## **10 COURSES**

- 10.1 The courses to be sailed will be windward-leeward courses. The race target time will be 30 minutes.

## **11 PENALTY SYSTEM**

- 11.1 Rule 44.1 is changed so that the Two-Turns Penalty is replaced by the One-Turn Penalty.
- 11.2 Decisions of the jury will be final as provided in rule 70.5.

## **12 SCORING**

- 12.1 Five races are required to be completed by each fleet to constitute a qualifying series. If 5 races are not completed as scheduled, the qualifying series will be extended to complete them.
- 12.2 One qualifying race is required to be completed by all fleets to constitute a regatta.
- 12.3 If at the end of the qualifying series some boats have more race scores than others, scores for the most recent races will be excluded so that all boats have the same number of race scores.
- 12.4 For the qualifying series, rule A4.2 is changed so that the scores are based on the number of boats assigned to the largest fleet.
- 12.5 Except for race scores excluded under instruction 12.7, a boat's regatta score will be the total of her race scores from her final-series races plus points equal to her qualifying-series rank.
- 12.6 Each final series fleet will be scored separately. Different final series fleets need not have completed the same number of final races. The boats in the Gold fleet will be ranked highest, etc.
- 12.7 Series Scores (apply separately to qualifying and final series):
  - (a) When fewer than 5 races have been completed, a boat's series score will be the total of her race scores.
  - (b) When from 5 to 8 races have been completed, a boat's series score will be the total of her race scores excluding her worst score.
  - (c) When 9 or more races have been completed, a boat's series score will be the total of her race scores excluding her two worst scores.

## **13 SUPPORT BOATS**

- 13.1 Support boats shall register at the Race Office during the registration period.
- 13.2 The fee for support boat registration shall be 50€ includes mooring.
- 13.3 A unique registration number will be assigned to each support boat. The registration number shall be visible at all times while on the water.
- 13.4 Support boats shall display their national letters on a flag or outboard covers.

## **14 PRIZES**

- 14.1 Prizes will be awarded to the first three boats in the gold fleet, and other fleets.

## **15 RIGHTS TO USE NAMES & LIKENESSES**

- 15.1 Competitors automatically grant to the organizing authority without payment the right in perpetuity to make, use and show any motion pictures, still pictures and live, taped or filmed television of or relating to the event.
- 15.2 Every boat may receive on-board cameras, GPS navigators or similar equipment.

**16 DISCLAIMER OF LIABILITY**

16.1 Competitors participate in the regatta entirely at their own risk. See rule 4, Decision to Race. The organizing authority will not accept any liability for material damage or personal injury or death sustained in conjunction with or prior to, during, or after the regatta.

**17 INSURANCE**

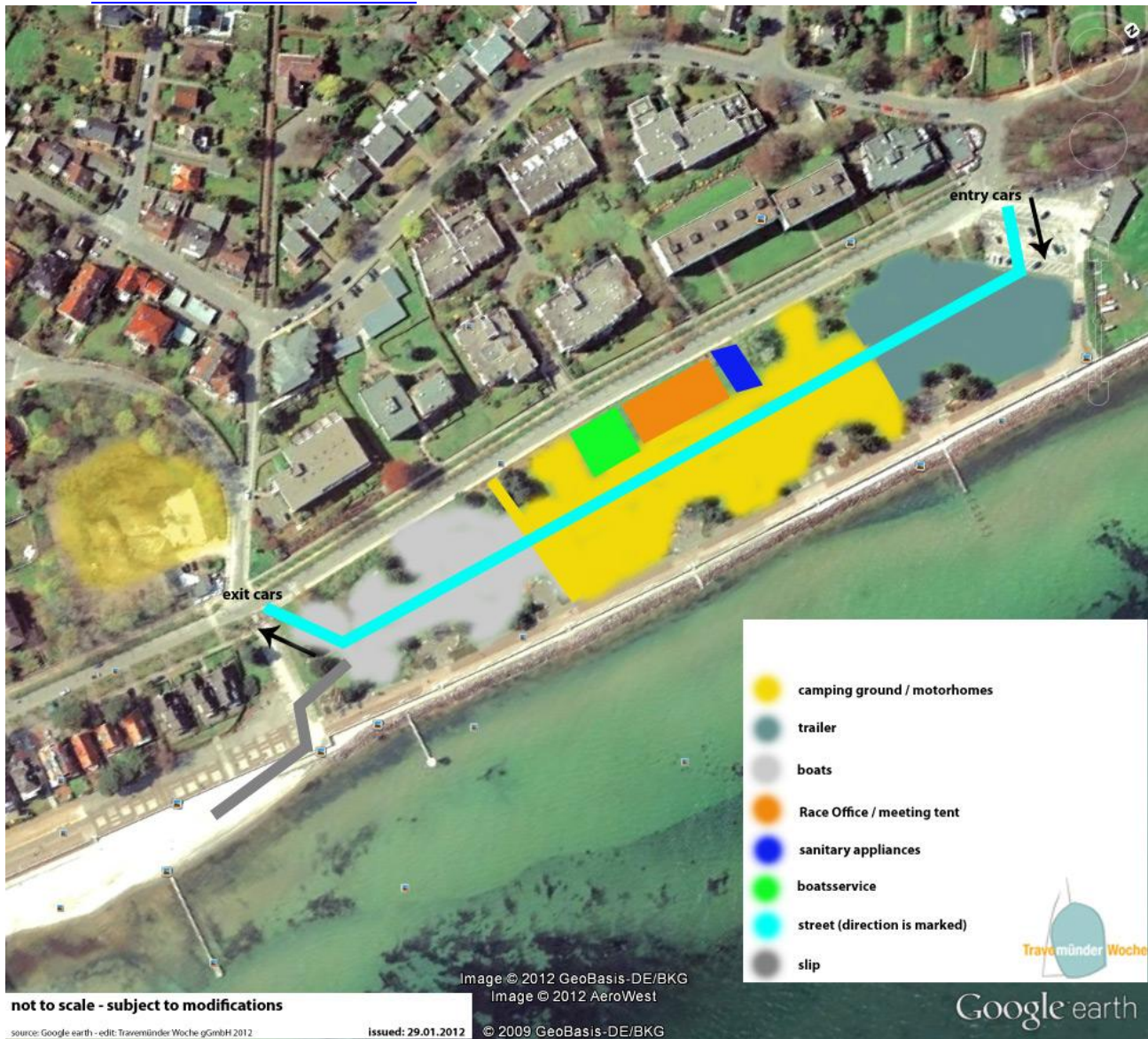
17.1 Each participating boat shall be insured with valid third-party liability insurance with a minimum cover of 1.500.000 € per event or the equivalent.

**18 FURTHER INFORMATION**

18.1 For further information please contact the organizers:

Sebastian Amend – [s.amend@travemuender-woche.de](mailto:s.amend@travemuender-woche.de)  
Jens Kath – [j.kath@travemuender-woche.de](mailto:j.kath@travemuender-woche.de)

Die TRAVEMÜNDER WOCHE gemeinnützige GmbH  
Trelleborgallee 2aD-23570 Travemünde  
Germany  
Telefon +49-4502 - 8 69 0-0  
Telefax+49-4502 - 8 69 0-22  
[info@travemuender-woche.de](mailto:info@travemuender-woche.de)  
[www.travemuender-woche.de](http://www.travemuender-woche.de)





Attachment A  
RACING AREA

