



Hawaii Yacht Club

1739C Ala Moana Blvd. Honolulu HI 96815

Telephone: (808) 949-4622

Fax: (808) 943-1441

E-mail: hyc-rsail@hawaii.rr.com

Sailing Instructions Jerry Barr Memorial Holo Holo Around Oahu Regatta

October 20 -21, 2012

Organizing Authority: Hawaii Yacht Club (HYC)

1. RULES

- 1.1. The race will be conducted according to *The Racing Rules of Sailing 2009-2012* [RRS], including US Sailing Prescriptions and Hawaii Yacht Racing Association [HYRA] Prescriptions unless otherwise amended in the Notice of Race or these Sailing Instructions.
- 1.2. RRS 51 and 52 are modified to allow the use of integrally designed Canting Ballast Twin Foil [CBTF] and water ballast technology.
- 1.3. RRS 52 is modified to allow the use of winches operated by using stored power.

2. NOTICES TO COMPETITORS

- 2.1. Notices to competitors will be posted on the official notice board at the HYC lower deck.

3. CHANGES TO THE SAILING INSTRUCTIONS

- 3.1. Any change to the Sailing Instructions will be posted by 2000 on Friday, October 19, 2012.

4. SCHEDULE OF THE RACE

- 4.1. Dates of Racing: All boats will start on Saturday, October 20, 2012.
- 4.2. Number of Races: All classes will compete in one (1) race.
- 4.3. Pursuit-style staggered starts will commence on Saturday, October 20. Start times will be posted by 1800 hrs on Friday, October 19, 2012.

5. RACING AREA

- 5.1. The race will be held on the waters surrounding the island of Oahu.

6. THE COURSE

- 6.1. Competitors shall choose one of two courses that circumnavigate Oahu:
Westerly Course: Start – G1(s) – R2(s) – Finish. Approximately 105 nm.
Easterly Course: Start – R2(p) – G1(p) – Finish. Approximately 105 nm.
- 6.2. Yachts shall pass to seaward of all government aids to navigation.
- 6.3. Yachts will comply with all USCG and Military Restricted Zones.

7. MARKS

- 7.1. "G1" is the green Ala Wai Harbor outer channel buoy.
- 7.2. "R2" is the red Ala Wai Harbor outer channel buoy.

8. AREAS THAT ARE OBSTRUCTIONS

- 8.1. The area between and within two of a vessel's hull lengths of the Atlantis Submarine barges, located offshore Waikiki, is designated as an obstruction. The penalty for entering this area is a 20% scoring penalty.

- 8.2. In accordance with 33 CFR 165.1407, the area around the Tesoro Single Point and Chevron Conventional Buoy Moorings is designated as an obstruction:

beginning at 21° 17.35' N, 158° 03.95' W,
thence northeast to 21° 16.47' N, 158° 3.50' W,
thence southeast to 21° 16.45' N, 158° 06.01' W,
thence southwest to 21° 15.53' N, 158° 05.56' W,
thence north to the beginning point.

- 8.3. All waters in the Danger Zone around the Ulupau Crater Weapons Training Range, defined as the area bounded by the point on land located at 21°27'10"N, 157°43'45"W, and the lighted buoys YB, YC, and YD (see Attachment 2):

YB – 21°28'48"N, 157°44'00"W

YC – 21°28'48"N, 157°42'49"W

YD – 21°28'04"N, 157°41'50"W

9. THE START

- 9.1. At least 30 minutes prior to the first start, each yacht shall submit, in writing, the course that will be used to circumnavigate the island (westerly course or easterly course) to the Race Committee. The course may be submitted in a sealed envelope that will not be opened until after all of the boats have started.
- 9.2. The starting line will be between the flagpole located at Hawaii Yacht Club and an orange inflatable mark in turning basin.
- 9.3. Start times for each boat will be posted by 1800 on Friday, October 19, 2012.

10. THE FINISH

- 10.1. The finish line will be between the flagpole located at Hawaii Yacht Club and an orange inflatable mark in turning basin.
- 10.2. Yachts shall check in with the race committee approximately 1 hour prior to their estimate finish time by calling **Marty Loo at 838-9619**.
- 10.3. All yachts shall record their own finish time and verify it with the race committee as soon as possible.

11. PENALTY SYSTEM

- 11.1. The two turns penalty, in accordance with RRS 44.1 and RRS 44.2, will be in effect.
- 11.2. Yachts that take a penalty or retire under RRS 31.2 or 44.1, shall file a written acknowledgement with the race committee prior to the protest time limit.

12. TIME LIMITS

- 12.1. There is no time limit for finishing the race.

13. PROTESTS AND REQUESTS FOR REDRESS

- 13.1. Protest forms are available from the race committee or HYC Bulletin Board. Protests shall be delivered to the race committee within the protest time limit.
- 13.2. For each class, the protest time limit is 90 minutes after the last boat in that class has finished the race. The same time limit applies to protests by the race committee about incidents they observe in the racing area and to requests for redress. This changes RRS 61.3 and 62.2.
- 13.3. Notices will be posted within 30 minutes of the protest time limit to inform competitors of the time and location of hearings in which they are parties or named as witnesses.
- 13.4. Notices of protests by the race committee will be posted to inform boats under RRS 61.1(b).
- 13.5. A list of boats that, under instruction 11.2, have acknowledged taking a penalty or retiring, will be posted before the protest time limit.

14. ARBITRATION

- 14.1. For protests involving two or fewer boats of an alleged breach of Part 2 of the RRS, a short arbitration hearing will be held prior to the protest hearing. This changes RRS Part 5. Section B.
- 14.2. After protests are turned in, one representative (conforming to RRS 63.3(a)) of each boat may appear before an arbitrator. No witnesses are permitted.
- 14.3. After hearing the testimony of each representative, the arbitrator shall reach one of the following conclusions:
 - 14.3.1. There was no breach of a rule. If the representatives agree, the protest is withdrawn and cannot be reopened. If any representative disagrees, the matter goes to the jury for a hearing.
 - 14.3.2. There was a breach of a rule by one or more of the boats involved. The representative(s) of the offending boat(s) have the option of accepting a 40% alternative penalty (calculated in RRS 44.3(c)) or submitting the matter to the jury for a hearing. If the penalty is accepted, the matter cannot be reopened or made the subject of a redress request.
 - 14.3.3. The matter should go to the jury for a hearing.
- 14.4. When a protest is referred to the jury, the arbitrator shall not be a member of the jury hearing process, but may offer testimony if requested by the jury.

15. SCORING

- 15.1. The low point system of Appendix A will apply.
- 15.2. In the event of a tie, RRS A7 and A8 will apply.
- 15.3. The PHRF handicap system will be in effect. Race handicaps will be calculated using the Time-on-Distance method.

16. SAFETY REGULATIONS

- 16.1. **VHF Channel 68** is reserved for essential communications, otherwise yachts shall monitor VHF Channel 16.
- 16.2. Upon withdrawing from the race, yachts shall inform the race committee via **VHF Channel 68**, by voice hail, or by calling the principal race officer Marty Loo at 838-9629. Failure to do so may result in denied entry to future races.

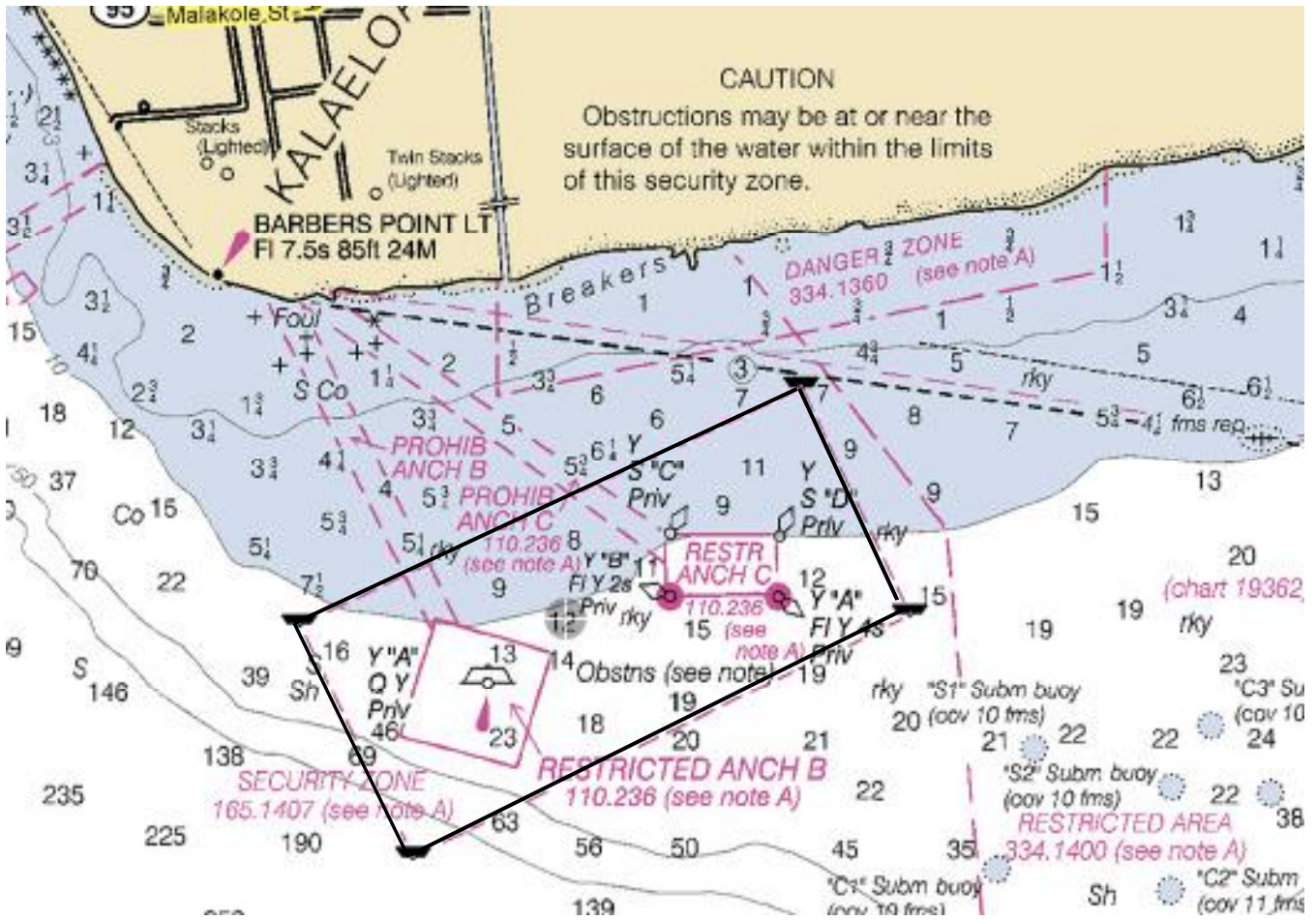
17. PRIZES

1st prize will be awarded if three or more boats enter, 2nd prize will be awarded if five or more boats enter, and 3rd prize will be awarded if seven or more boats enter.

18. DISCLAIMER OF LIABILITY

Competitors participate in the regatta entirely at their own risk. See RRS 4, Decision to Race. The organizing authority will not accept any liability for material damage or personal injury or death sustained in conjunction with or prior to, during, or after the regatta.

Attachment 1. Security Zone Around the Tesoro Single Point Mooring and the Chevron Conventional Mooring.



Attachment 2. Danger Zone Around the Ulupau Crater Weapons Training Area.

