



Sailing World Cup – Miami Presented by US Sailing

A 2012-2013 ISAF Sailing World Cup Regatta SAILING INSTRUCTIONS



[DP] denotes a rule for which the penalty is at the discretion of the International Jury.

[NP] denotes that a breach of this rule will not be grounds for a protest by a boat.

[SP] denotes a rule for which a standard penalty may be applied by the race committee without a hearing"

1 RULES

- 1.1 The regatta will be governed by the rules as defined in *The 2013-2016 Racing Rules of Sailing* (RRS).
- 1.2 The US Sailing prescriptions that apply are stated in full in NoR Addendum B.
- 1.3 Decisions of the International Jury will be final as provided in RRS 70.5.
- 1.4 If there is a conflict between languages the English text will take precedence.
- 1.5 Appendix B, Windsurfing Competition Rules, will apply. RRS B3 is deleted and replaced by "RRS 31 is changed to 'A board may touch a mark but shall not hold on to it'."
- 1.6 Appendix P, Special Procedures for Rule 42, will apply.
- 1.7 For the Men's Skiff, Women's Skiff, Mixed Two Person Multihull and Two Person Paralympic events, RRS 44.1 and RRS P2.1 are changed so that the Two-Turns Penalty is replaced by the One-Turn Penalty.
- 1.8 For medal races, ISAF Addendum Q, *Umpired Fleet Racing*, will apply and takes precedence over any conflicting instructions.
- 1.9 SKUD 18 Class Rule J.3 will apply.
- 1.10 This will be a Sonar Class Association Appendix B - Alternative Rules event.

2 [DP] [NP] SAFETY REGULATIONS

- 2.1 The race committee will protest a boat for a breach of these safety regulations.
- 2.2 Competitors are required to wear personal flotation devices at all times while afloat, except briefly while changing or adjusting clothing or personal equipment.
- 2.3 Boats not leaving the harbour for a scheduled race shall promptly notify the Race Office.
- 2.4 On arrival in the course area each day, each boat shall sail past the stern of the race committee signal boat on starboard tack and hail her sail or bow number until acknowledged by the race committee.
- 2.5 A boat that retires from racing shall notify the race committee before leaving the racing area, or if that is not possible, shall notify the race office as soon as possible after returning ashore.
- 2.6 Boats retiring from racing in accordance with SI 2.5 shall complete a retirement declaration form at the race office before the protest time limit.
- 2.7 In accordance with NoR 16, Berthing, boats shall return to and remain in their assigned berths.
- 2.8 Boats shall avoid commercial traffic. Boats not racing shall remain clear of boats that are racing and official boats.
- 2.9 When the race committee displays flag V with repetitive sounds, all official and support boats shall monitor the Race Committee radio channel for search and rescue instructions.



2.10 Additional Safety Information:

- The United States Coast Guard monitors VHF radio channel 16 for distress calling
- Emergency services can be reached by calling 911 on cellular telephones
- The telephone number of the US Sailing Center in Miami is 305.854.1058

3 CODE OF CONDUCT

3.1 Competitors shall comply with any reasonable request from a regatta official.

3.2 Competitors shall handle any boats or equipment provided by the organizing authority with proper care and seamanship, and in compliance with any written instructions.

4 COMMUNICATIONS WITH COMPETITORS

4.1 Notices to competitors will be posted on the official notice board located on the ground floor of the US Sailing Center, Miami. Notices will also be posted on the US Sailing web site at <http://mocr.ussailing.org> and may be posted at other locations specified in SI Addendum C.

4.2 When a visual signal is displayed over an area, event, or fleet flag, the signal applies only to that area, event, or fleet. This changes the Race Signals preamble.

4.3 Signals ashore will be displayed on the flagpole by the water at the US Sailing Center or, as applicable, at other locations specified in SI Addendum C.

4.4 When flag AP is displayed ashore, '1 minute' is replaced with 'not less than sixty minutes' in the race signal AP. Flag AP over H displayed ashore means 'Boats shall not leave the harbour. Wait for further instructions.' This changes Race Signals AP over H.

4.5 When flag Y is displayed ashore, RRS 40 applies at all times while afloat. This changes the Part 4 preamble.

5 CHANGES TO SAILING INSTRUCTIONS

5.1 Any change to the format or schedule of races will be posted by 2100 on the day before it will take effect and any change to the sailing instructions will be posted before 0900 on the day it will take effect.

5.2 Any reassignment of events or fleets to course areas will be posted before 0900 on the day it will take effect, or if flag AP is displayed ashore, 30 minutes before flag AP for that class or fleet is removed.

5.3 Any change to the sailing instructions will be approved by the principal race officer and the jury chairman.

6 FORMAT OF RACING

6.1 The number of fleets for an event is shown in SI Addendum C, Schedule of Races, and may be changed until 2100 on the day before the first scheduled race. An updated version of Addendum C will be posted on the Official Notice Board as part of these sailing instructions.

6.2 The format of each event is shown in SI Addendum D, Format and Scoring, as defined below.



6.3 Qualifying Series

6.3.1 Boats will be assigned to fleets Yellow, Blue, Red, Green, etc. of, as nearly as possible, equal size and ability. Initial assignments will be made by a seeding committee appointed by the race committee. Those assignments will be posted by 2100 on the day before the first scheduled race for each event.

6.3.2 Boats will be reassigned to fleets after each day of racing, except if on the first day fewer than two races are completed by all fleets. If all fleets have completed the same number of races, boats will be reassigned on the basis of their ranks in the series. If all fleets have not completed the same number of races, the series scores for reassignment will be calculated for those races, numbered in order of completion, completed by all fleets. For four fleets, and similarly for any other number, reassignments will be made as follows:

<i>Rank in series</i>	<i>Fleet assignment</i>
First	Yellow
Second	Blue
Third	Red
Fourth	Green
Fifth	Green
Sixth	Red
Seventh	Blue
Eighth	Yellow
and so on	

If two or more boats have the same rank, they will be entered in the left column in the order of fleets in SI 6.4.1.

6.3.3 Assignments will be based on the ranking available at 2100 that day regardless of protests or requests for redress not yet decided.

6.3.4 If all fleets have not completed the same number of races by the end of a day, the fleets with fewer races will continue racing the following day until all fleets have completed the same number of races. All boats will thereafter race in the new fleets.

6.4 Gold Series:

6.4.1 Boats will be assigned to fleets Gold, Silver, Bronze, Emerald, etc., on the basis of their ranks in the Qualifying Series. There will be the same number of fleets in the Gold Series as there were in the Qualifying Series. The Gold Series fleets will have the number of boats shown in Addendum D. Boats with the best qualifying-series ranks will race all final-series races in the Gold fleet, boats with the next-best qualifying-series ranks will race in the Silver fleet, etc.

6.4.2 Any recalculation of Qualifying Series ranking after boats have been assigned to Gold Series fleets will not affect the assignments except that a redress decision may promote a boat to a higher fleet.

6.5 Medal Stages - Quarter Finals (QF), Semi Finals (SF), Finals:

6.5.1 A Medal Stage will be scheduled for each Olympic class with 3 or more Fleet Series races completed.



6.5.2 Assignments to a Medal Stage will be based on the ranking available at 0800 on the day of the Medal Stage. The protest committee may extend the time limit.

7 SCHEDULE OF RACES

7.1 The total number of races scheduled including Medal Stage, if any, is shown in SI Addendum D.

7.2 The daily race schedule and the scheduled time of the warning signal for the first race is shown in SI Addendum C.

7.3 Races not sailed on the scheduled day may be sailed on a following day at the discretion of the race committee.

7.4 For single fleet events, except Men's and Women's Board events, the Fleet Series will take place from Monday, January 28 through Friday, February 1 and the Medal Stage will take place on Saturday, February 2. For the Men's and Women's Board events, the Fleet Series will take place from Monday, January 28 through Friday, February 1, and the Medal Stages will take place on Thursday and Friday, January 31 and February 1.

7.5 For split fleet events, the Qualifying Series will take place from Monday, January 28 through Wednesday, January 30, the Gold Series will take place from Thursday, January 31 to Friday, February 1 and the Medal Stage, if held, will take place on Saturday, February 2. The qualifying series will be extended if four races for all fleets have not been completed.

7.6 The warning signal for each succeeding race will be made as soon as practicable.

7.7 To alert boats that a race or sequence of races will begin soon, the orange starting line flag will be displayed with one sound at least five minutes before a warning signal is displayed.

7.8 On the last scheduled day of racing, no warning signal will be made after 1700.

10 COURSE AREAS

10.1 The course areas are shown in SI Addendum A.

10.2 Events are assigned to course areas as stated in SI Addendum C.

10.3 For the Medal Stage races, two race course areas will be used. The locations will be posted on the official notice board.

11 THE COURSES

The diagrams in SI Addendum B show the courses, the course designations, the approximate angles between legs, the order in which marks are to be passed, and the side on which each mark is to be left.

12 MARKS

12.1 Marks 1, 2, 3, and 4, or associated gate marks, will be as follows:

Course Area	Marks 1, 2, 3, 4	New Mark	Inflatable Finishing Line Mark
Alpha	2 meter Orange Ball	Yellow Tetrahedron	Green Tetrahedron
Bravo	2 meter Orange Ball	Yellow Tetrahedron	Green Tetrahedron
Charlie	2 meter Orange Ball	Yellow Cylinder	Green Tetrahedron
Delta	2 meter Orange Ball	Yellow Cylinder	Green Tetrahedron
Echo – See 12.5	2 meter Orange Ball	Yellow Cylinder	Green Tetrahedron



- 12.2 Offset marks will be a one meter red ball.
- 12.3 Marks S1, S2, and S3, or associated gates, will be red balls.
- 12.4 The starting and finishing line marks will be race committee vessels or inflatable marks.
- 12.5 For the Multihull event only, Mark 1 will be an Orange Tetrahedron

13 CLASS FLAGS

Class flags will be class insignia on the following background:

Event	Class Insignia	Background Colour
Men's Board	RS:X	White
Women's Board	RS:X	Light Blue
Men's One Person Dinghy	Laser Standard	White
Women's One Person Dinghy	Laser Radial	Light Blue
Men's 2nd One Person Dinghy	Finn	White
Men's Skiff	49er	White
Women's Skiff	49er FX	Light Blue
Men's Two Person Dinghy	470	White
Women's Two Person Dinghy	470	Light Blue
Mixed Two-Person Multihull	Nacra	White
One Person Paralympic	2.4 mR	White
Three Person Paralympic	Sonar	White

14 THE START

14.1 The starting line will be between a staff displaying an orange flag on the race committee vessel at the starboard end and either

- (a) the course side of the port-end inflatable starting mark, or
- (b) a staff displaying an orange flag on the race committee vessel at the port end.

14.2 [DP] A buoy may be attached to the race committee starting boat anchor line just below centerboard depth. Boats shall not pass between this buoy and the race committee starting boat at any time. This buoy is part of the race committee starting boat ground tackle.

14.3 [DP] Boats whose warning signal has not been made shall avoid the starting area. The starting area is defined as a rectangle 50 meters from the starting line and marks in all directions.

15 COURSE CHANGES

15.1 To change the next leg of the course, the race committee will lay a new mark (or move the finishing line) and remove the original mark as soon as practicable. When in a subsequent change a new mark is replaced, it will be replaced by an original mark.

15.2 Courses will not be shortened. This changes RRS 32.

16 THE FINISH

The finishing line will be between a staff displaying an orange flag on the race committee vessel and either:

- (a) the course side of the nearby inflatable finishing mark, or
- (b) a staff displaying an orange flag on the nearby race committee vessel.



17 TIME LIMITS AND TARGET TIMES

17.1 Except for medal races, time limits and target times are as follows:

Class	Time Limit	Mark 1 Time Limit	Finish Window	Target Time
470, Laser, Laser Radial, Nacra	90	30	20	50
49er, 49er FX	50	20	10	30
Finn	90	40	25	50
Boards	50	10	5	30
Paralympic Events	90	30	20	50

17.2 Time limits and target times for medal races are as follows:

Class	Time Limit	Mark 1 Time Limit	Finish Window	Target Time
Boards, Men and Women	40	15	5	15
49er and 49er FX	15	6	5	10
All other classes	50	30	10	30

17.3 If no boat has passed Mark 1 within the Mark 1 Time Limit the race will be abandoned.

17.4 Boats failing to finish within the time stated in the Finish Window after the first boat sails the course and finishes will be scored Did Not Finish. This changes RRS 35, A4 and A5.

20 [DP] EQUIPMENT AND MEASUREMENT CHECKS

20.2 Equipment may be inspected at any time for compliance with the class rules and sailing instructions. When instructed by an event equipment inspector, a boat shall proceed immediately to a designated area for inspection.

20.3 Boats shall apply Equipment Limitation Control stickers to specified equipment and sign a declaration of compliance prior to racing.

21 [DP] REPLACEMENT OF CREW OR EQUIPMENT

21.1 Substitution of competitors will not be allowed without prior written approval of the race committee and shall comply with any restrictions in the Notice of Race.

21.2 Substitution of damaged or lost equipment will not be allowed unless approved by the race committee. Requests for substitution shall be made to the race committee at the first reasonable opportunity.

22 OFFICIAL BOATS

22.1 Official boats will be marked as follows:

Equipment Inspection - a white flag with the letter M or the word MEASURER

First aid/Medical - a white flag with a red cross

Jury/Judges - a white flag with the word JURY

Media – Green Flag

Organisers/VIP - Pink flag

Race Committee - a blue race committee flag

22.2 Actions by official boats or helicopters shall not be grounds for requesting redress by a boat. This changes RRS 60.1(b).



23 [DP] SUPPORT AND SPECTATOR BOATS

23.1 Support boats shall be marked in compliance with NoR 15.2.

23.2 Support boats shall not interfere with boats racing or official boats, or create a wake that affects boats racing.

23.3 Support boats shall not be positioned:

23.3.1 Closer than 50 metres of any boat racing.

23.3.2 Within 50 metres of the starting line and marks from the time of the preparatory signal until all boats have left the starting area, or the race committee signals a postponement, general recall or abandonment.

23.3.3 Between any boat racing and the next mark of the course.

23.3.4 Between the inner and outer trapezoid courses when boats are racing on both courses.

23.3.5 Within 50 metres of any mark of the course while boats are in the vicinity of that mark.

23.3.6 Within 50 metres of the finishing line and marks while boats are finishing.

23.4 In addition, support boats that are motoring above 5 knots shall remain at least 150 metres from any boat racing.

23.5 Support boats shall comply with any reasonable request from a regatta official.

23.6 Additional restrictions apply to medal races and will be posted on the official notice board.

23.7 The International Jury may direct the organizing authority to revoke privileges from any boat or person found to be in breach of SI 23.

23.8 Except for SI 23.1, these instructions shall also apply to spectator boats.

24 [DP] [NP] IDENTIFICATION AND ADVERTISING WHILE RACING

24.1 Each day, the first, second and third boats in series ranking at the beginning of the day shall display a yellow, blue and red bib on the crew respectively. In addition, the organizing authority may require a coloured dot to be applied to the mainsail. The organizing authority will supply the bibs and coloured dots, and instructions for their use.

24.2 Boats shall display required event sponsor advertising. The organizing authority will supply the advertising and instructions for their use.

24.3 For split fleet events, boats shall display a coloured band or ribbon corresponding to the fleet to which she has been assigned. The organizing authority will supply the bands or ribbons and instructions for their use.

25 SCORING

25.1 RRS B8 and RRS B10 are deleted.

25.2 A boat starting later than 4 minutes after her starting signal will be scored Did Not Start. This changes RRS A4 and A5.



- 25.3 RRS A4.2 is changed so that those scores are based on
- (a) the number of boats assigned to compete in the stage, for single fleets.
 - (b) the number of boats assigned to the largest fleet in that stage, for split fleets.
- 25.4 As shown in Addendum D, a boat's race score shall be:
- (a) as calculated in RRS A4 or;
 - (b) as calculated in RRS A4 with RRS A4.1 changed so that First place is scored 0 points or;
 - (c) as calculated in RRS A4 with RRS A4.1 changed so that the points are doubled.
- 25.5 As shown in Addendum D, a boat's score in a stage shall be:
- (a) the total of her race scores;
 - (b) the total of her race scores excluding any worst score or;
 - (c) the total of her race scores, including her series score in the previous stage, excluding any worst score or;
 - (d) the total of her race scores, including her ranking in the previous stage, excluding any worst score. The boat's ranking in the previous stage will be calculated as the initial race of the series and shall not be excluded or;
 - (e) the total of her race scores, including her ranking in the previous stage, excluding any worst score. The boat's ranking in the previous stage will be calculated as the initial race of the series and may be excluded or;
 - (f) her race score.
- 25.6 To request correction of an alleged error in posted race or series results, a boat may complete a scoring enquiry form available at the race office.
- 25.7 Single Fleet Series:
- Three races, including the medal race, if any, are required to be completed to constitute a regatta.
- 25.8 Split Fleet Series:
- 26.8.1 Three races are required to be completed to constitute a regatta. These races consist of those qualifying races completed by all fleets, any final races completed by the Gold fleet, and the medal race, if any.
- 25.8.2 If at the end of the qualifying series some boats have more race scores than others, scores for the most recent races will be excluded so that all boats have the same number of race scores.
- 25.8.3 Final series fleets will be scored separately and different final series fleets need not have completed the same number of final races.
- 25.8.4 For final ranking, boats assigned to the Gold fleet will be ranked higher in the regatta than the boats assigned to the Silver fleet, and so on.
- 25.9 Medal Stage:
- 25.9.1 The boats assigned to compete in the Medal Stage will be ranked highest in the regatta except for a boat disqualified from a medal race under RRS 5 or 69.
- 25.9.2 RRS A4.1 is changed so that the points are doubled, and RRS A4.2 is changed so that the scores are based on the number of boats assigned to compete in that race.
- 25.9.3 Ties -
- (a) For boats competing in a medal stage with a single race, ties in the regatta score are broken by the medal race score. This changes RRS A8. However, for boats with the same



points score in the medal race, ties in the regatta score are broken applying RRS A8 to the opening series scores.

(b) For boats competing in a medal stage with more than one race, ties in the regatta score are broken by the medal race score. This changes RRS A8. However, for boats with the same points score in the medal race, ties in the regatta score are broken applying RRS A8 to the opening series scores.

25.9.4 A boat assigned to compete in the medal stage shall make a genuine effort to start, sail the course and finish. The penalty for a breach of this instruction will be ranking the boat tenth in the regatta. If there are two such boats, they will be ranked ninth and tenth, in order of their opening-series ranks, and so on. This changes RRS A2.

26 PROTESTS, PENALTIES AND REQUESTS FOR REDRESS

26.1 Protest forms are available at the race office, located at the US Sailing Center, Miami. Protests and requests for redress or reopening shall be delivered there within the appropriate time limit.

26.2 For each fleet, the protest time limit is 90 minutes after the last boat has finished the last race of the day.

26.3 Notices will be posted within 30 minutes of the protest time limit to inform competitors of hearings in which they are parties or named as witnesses. Hearings will be held in the protest room, located at the US Sailing Center beginning at the time posted. Hearings may be scheduled to begin up to 30 minutes before the end of protest time.

26.4 Notices of protests by the race committee or protest committee will be posted to inform boats under RRS 61.1(b).

26.5 A list of boats that have been penalized under Appendix P for breaking RRS 42 will be posted.

26.6 Penalties for breaches of class rules, or rules in the NOR and SIs marked [DP], are at the discretion of the protest committee. A boat may accept a discretionary penalty before a hearing concerning the same incident by completing a form available at the jury office.

26.7 Breaches of rules in the SIs marked [NP] will not be grounds for a protest by a boat. This changes RRS 60.1(a).

26.8 For breaches of the SIs marked [SP], the race committee may apply a standard penalty without a hearing. A list of these breaches and the associated standard penalties will be posted on the Official Notice Board. However, the race committee may protest a boat when they consider the standard penalty to be inappropriate. This changes RRS 63.1 and Appendix A5.

26.9 On the last day of the qualifying series or opening series, or on the last scheduled day of racing, a request for reopening a hearing shall be delivered

(a) within the protest time limit if the requesting party was informed of the decision on the previous day;

(b) no later than 30 minutes after the requesting party was informed of the decision on that day.

This changes RRS 66.



26.10 On the last day of the qualifying series or opening series, or on the last scheduled day of racing, a request for redress based on a jury decision shall be delivered no later than 30 minutes after the decision was posted. This changes RRS 62.2.

27 [DP] RADIO COMMUNICATION

A boat shall neither make radio transmissions while racing nor receive radio communications not available to all boats, except in an emergency or when using equipment provided by the race committee. This restriction also applies to mobile telephones.

28 [DP] TRASH DISPOSAL

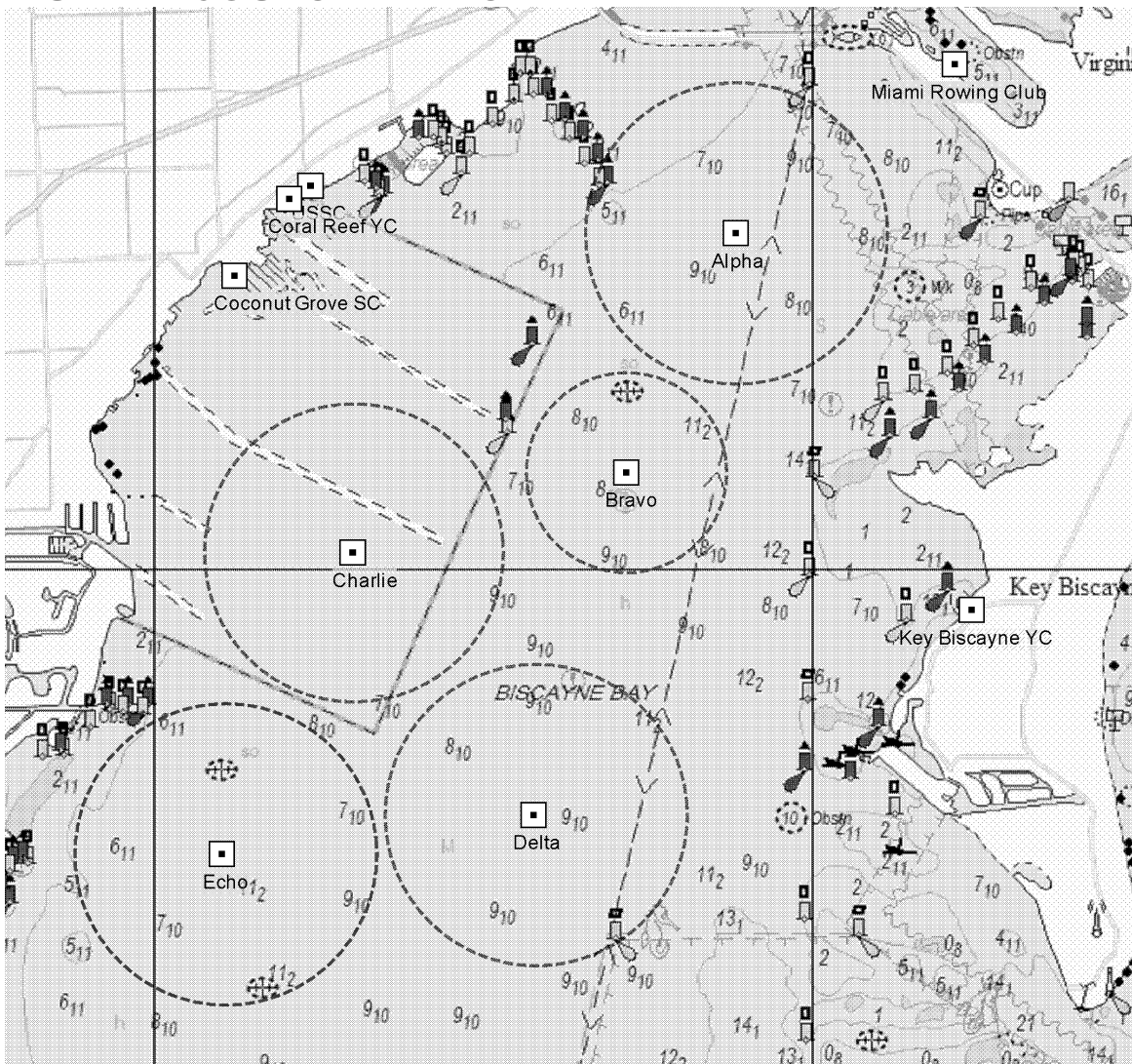
As sailors, we seek to protect and restore our oceans and coastal waters. Boats shall not intentionally put trash in the water. Trash may be placed aboard support and race committee boats.

29 PRIZES

29.1 Medals will be awarded to the top 3 boats in each event.



ADDENDUM A - COURSE AREAS



COURSE ASSIGNMENTS:

Alpha – Men's and Women's Skiff

Circle Center: Latitude 25° 43.8' N – Longitude 80° 11.4' W

Bravo – All Paralympic Events

Circle Center: Latitude 25° 42.6' N – Longitude 80° 12.0' W

Charlie – Men's and Women's Boards

Circle Center: Latitude 25° 42.2' N – Longitude 80° 13.5' W

Delta – Men's and Women's One Person Dinghy

Circle Center: Latitude 25° 40.9' N – Longitude 80° 12.5' W

Echo – Men's and Women's 2 Person Dinghy, Men's Second One Person Dinghy, Multihull

Circle Center: Latitude 25° 40.7' N – Longitude 80° 14.2' W



ADDENDUM B - COURSE ILLUSTRATIONS

I

Course: Inner Trapezoid

Signal	Mark Rounding Order
I2	Start - 1 - 4s/4p - 1 - 2 - 3p - Finish
I3	Start - 1 - 4s/4p - 1 - 4s/4p - 1 - 2 - 3p - Finish
I4	Start - 1 - 4s/4p - 1 - 4s/4p - 1 - 4s/4p - 1 - 2 - 3p - Finish

O

Course: Outer Trapezoid

Signal	Mark Rounding Order
O2	Start - 1 - 2 - 3s/3p - 2 - 3p - Finish
O3	Start - 1 - 2 - 3s/3p - 2 - 3s/3p - 2 - 3p - Finish
O4	Start - 1 - 2 - 3s/3p - 2 - 3s/3p - 2 - 3s/3p - 2 - 3p - Finish

IS

Course: Inner Slalom

Signal	Mark Rounding Order
IS2	Start - 1 - 4s/4p - 1 - 2 - 3p - S1 - S2 - S3 - Finish
IS3	Start - 1 - 4s/4p - 1 - 4s/4p - 1 - 2 - 3p - S1 - S2 - S3 - Finish
IS4	Start - 1 - 4s/4p - 1 - 4s/4p - 1 - 4s/4p - 1 - 2 - 3p - S1 - S2 - S3 - Finish

OS

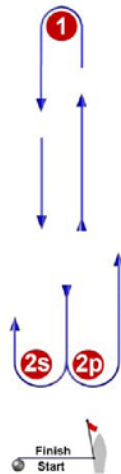
Course: Outer Slalom

Signal	Mark Rounding Order
OS2	Start - 1 - 2 - 3s/3p - 2 - 3p - S1 - S2 - S3 - Finish
OS3	Start - 1 - 2 - 3s/3p - 2 - 3s/3p - 2 - 3p - S1 - S2 - S3 - Finish
OS4	Start - 1 - 2 - 3s/3p - 2 - 3s/3p - 2 - 3s/3p - 2 - 3p - S1 - S2 - S3 - Finish



ADDENDUM B - COURSE ILLUSTRATIONS (continued)

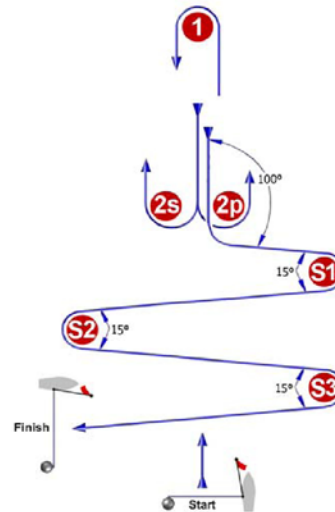
L



Course: Windward/Leeward

Signal	Mark Rounding Order
L2	Start - 1 - 2s/2p - 1 - Finish
L3	Start - 1 - 2s/2p - 1 - 2s/2p - 1 - Finish
L4	Start - 1 - 2s/2p - 1 - 2s/2p - 1 - 2s/2p - 1 - Finish

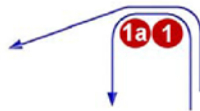
LS



Course: Windward/Leeward With Slalom Finish

Signal	Mark Rounding Order
LS2	Start - 1 - 2s/2p - 1 - 2p - S1 - S2 - S3 - Finish
LS3	Start - 1 - 2s/2p - 1 - 2s/2p - 1 - 2p - S1 - S2 - S3 - Finish
LS4	Start - 1 - 2s/2p - 1 - 2s/2p - 1 - 2s/2p - 1 - 2p - S1 - S2 - S3 - Finish

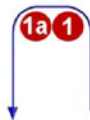
IA



Course: Same As Course I Except With Offset Mark 1A

Signal	Mark Rounding Order
IA2	Start - 1 - 1a - 4s/4p - 1 - 1a - 2 - 3p - Finish
IA3	Start - 1 - 1a - 4s/4p - 1 - 1a - 4s/4p - 1 - 1a - 2 - 3p - Finish
IA4	Start - 1 - 1a - 4s/4p - 1 - 1a - 4s/4p - 1 - 1a - 4s/4p - 1 - 1a - 2 - 3p - Finish

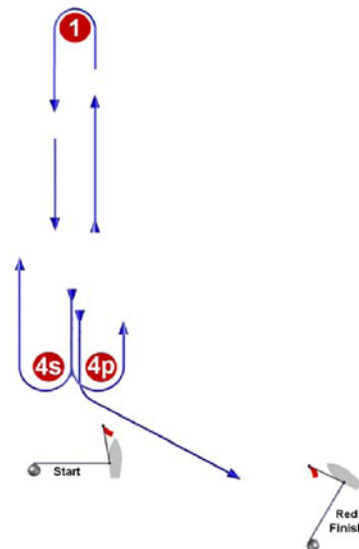
LA



Course: Same As Course L Except With Offset Mark 1A

Signal	Mark Rounding Order
LA2	Start - 1 - 1a - 2s/2p - 1 - 1a - Finish
LA3	Start - 1 - 1a - 2s/2p - 1 - 1a - 2s/2p - 1 - 1a - Finish
LA4	Start - 1 - 1a - 2s/2p - 1 - 1a - 2s/2p - 1 - 1a - 2s/2p - 1 - 1a - Finish

LR



Course: Windward/Leeward

Signal	Mark Rounding Order
LR2	Start - 1 - 4s/4p - 1 - 4p - Finish
LR3	Start - 1 - 4s/4p - 1 - 4s/4p - 1 - 4p - Finish
LR4	Start - 1 - 4s/4p - 1 - 4s/4p - 1 - 4s/4p - 1 - 4p - Finish



ADDENDUM C - SCHEDULE OF RACES

Event	Time of 1 st warning signal (hrs) and scheduled number races (#) by day						
	Mon/28	Tue/29	Wed/30	Thu/31	Fri/01	Sat/02	
	TIME #	TIME #	TIME #	TIME #	TIME #	TIME	
Paralympic Single Person 2.4 mR	1300 2	1300 2	1300 2	1100 2	1100 2		
Paralympic Three Person Sonar	1100 2	1100 2	1100 2	1300 2	1300 2		
Boards Men	1100 2	1100 2	1110 2	1110 semi	final		
Boards Women	1110 2	1110 2	1100 2	1100 semi	final		
Two Person Dinghy Men/Women	1000 2	1000 2	1000 2	1200 2	1200 2	TBA	Medal
Second One Person Dinghy Men	1330 2	1330 2	1330 2	1000 2	1000 2	TBA	Medal
One Person Dinghy Men Blue/Silver	1100 2	1100 2	1100 2	1300 2	1300 2	TBA	Medal(3)
One Person Dinghy Men Yellow/Gold	1115 2	1115 2	1115 2	1315 3	1315 2	TBA	Medal(3)
One Person Dinghy Women	1300 2	1300 2	1300 2	1100 2	1100 2	TBA	Medal(3)
Skiff Men	1300 3	1300 3	1100 3	1100 3	1100 3	TBA	Big 60
Skiff Women	1100 3	1100 3	1300 3	1300 3	1300 3	TBA	Big 60
Multihull	1015 2	1015 2	1015 2	1215 2	1215 2	TBA	Medal



ADDENDUM C - SCHEDULE OF RACES (continued)

Course Assignments (SI 10), Supplement Notice Board (SI)

Event	Course	Locations for launching, signals displayed ashore, and supplemental notice boards
Paralympic Single Person 2.4 mR	B	Shake A Leg
Paralympic Three Person Sonar	B	Shake A Leg
Boards Men	C	Coconut Grove Sailing Club
Boards Women	C	Coconut Grove Sailing Club
Two Person Dinghy Men/Women	E	US Sailing Center
Second One Person Dinghy Men	E	US Sailing Center
One Person Dinghy Men	D	US Sailing Center
One Person Dinghy Women	D	US Sailing Center
Skiff Men	A	Miami Rowing Club
Skiff Women	A	Miami Rowing Club
Multihull	E	Miami Rowing Club



ADDENDUM D – FORMAT AND SCORING

ADDENDUM D – FORMAT AND SCORING

See SI 6 for the description of formats, see SI 25 for the description of scoring systems.

Event	Stage No.	Stage Name	Addendum Q Applies	Total Races (Note 1)	Maximum Races per Day	Race Scoring (Note 2)	Carryover Scoring (Note 3)	Excluded Scores	Notes
Paralympic Events	1 of 1	Fleet Series	No	10	3			1 after 2	
Board (M&W)	1 of 4	Fleet Series	No	9	3			1 after 2	4
Board (M&W)	2 of 4	Quarter Final	No	3	3		None	0	5
Board (M&W)	3 of 4	Semi Final	Yes	1	1		None	0	6
Board (M&W)	4 of 4	Final	Yes	1	1		None	0	
One Person Dinghy (M&W)	1 of 3	Fleet Series	No	6	3	1st = 0		1 after 2	7
One Person Dinghy (M&W)	2 of 3	Gold/Silver Series	No	5	3	1st = 0	Race	1 after 2	8
One Person Dinghy (M&W)	3 of 3	Medal Series	Yes	3	3	Double	Series	0	
2nd One Person Dinghy	1 of 2	Fleet Series	No	10	3			1 after 2	
2nd One Person Dinghy	2 of 2	Medal Race	Yes	1	1	Double	Series	0	
Skiff (M&W)	1 of 2	Fleet Series	No	15	4			1 after 2	9
Skiff (M&W)	2 of 2	Medal Series	Yes	6	6		Race	0	10
Two Person Dinghy (M&W)	1 of 2	Fleet Series	No	10	3			1 after 2	
Two Person Dinghy (M&W)	2 of 2	Medal Race	Yes	1	1	Double	Series	0	
Multihull	1 of 2	Fleet Series	No	10	3			1 after 2	
Multihull	2 of 2	Medal Race	Yes	1	1	Double	Series	0	

Note 1: Total Races include races sailed on the water and do not include a Carryover Race, if any.

Note 2: '1st = 0' means the boat finishing in first place shall be scored 0 points; 'Double' means the race scores count double points.

Note 3: 'None' means no scores carry forward; 'Series' means the previous stage series scores carry over to this stage; 'Race' means that a race with points equal to a boats finishing position in the previous stage will be carried over to this stage.

Note 4: After 6 races, the top 10 boards advance to Stage 2. After 8 races, the top 2 boards advance to Stage 3. Boats not advancing continue in series.

Note 5: The top 4 boards advance to Stage 4. The remainder advance to Stage 3.

Note 6: The top 2 boards advance to Stage 4.

Note 7: After 6 races, the top 40 men and the top 40 women advance to the Gold Series. The remaining boats advance to the Silver Series.

Note 8: Top 10 in the Gold Fleet advance to the Medal Series

Note 9: Top 6 boats advance to the Medal Series

Note 10: First boat to win 2 races, wins the event and the event is then complete. 1st place in the Carryover Race counts as first win.

Q - UMPIRED FLEET RACES

This addendum has been approved by ISAF in accordance with rule 86.2 and ISAF Regulation 28.1.3.

Version: January 21, 2013

Marginal marks indicate important changes from the previous version.

These sailing instructions change the definition Proper Course, and rules 20, 28.2, 44, 60, 61, 62, 63, 64.1, 65, 66, 70, 78.3 and B5.

Q1 CHANGES TO RACING RULES

Additional changes to rules are made in instructions Q2, Q3, Q4, and Q5.

Q1.1 Changes to the Definitions and the Rules of Part 2 and Part 4

- (a) Add to the definition Proper Course: 'A boat taking a penalty or manoeuvring to take a penalty is not sailing a *proper course*.'
- (b) When rule 20 applies, the following arm signals are required in addition to the hails:
 - (1) for 'Room to tack', repeatedly and clearly pointing to windward; and
 - (2) for 'You tack', repeatedly and clearly pointing at the other boat and waving the arm to windward.

Instruction Q1.1(b) does not apply to boards.

Q1.2 Changes to Rules Involving Protests, Requests for Redress, Penalties and Exoneration

- (a) The first sentence of rule 44.1 is replaced with: 'A boat may take a One-Turn Penalty when she may have broken a rule of Part 2 (except rule 14 when she has caused damage or injury) or rule 31 or 42 while *racing*.'
- (b) For boards, the One-Turn Penalty is one 360° turn with no requirement for a tack or a gybe.
- (c) Rule 60.1 is replaced with 'A boat may protest another boat or request redress provided she complies with instructions Q2.1 and Q2.4.'
- (d) The third sentence of rule 61.1(a) and all of rule 61.1(a)(2) are deleted. Rule B5 is deleted.
- (e) Rules 62.1(a), (b) and (d) are deleted. In a race where this addendum applies, there shall be no scoring adjustments for redress given under any of these rules for a previous race.
- (f) Rule 64.1(a) is changed so that the provision for exonerating a boat may be applied by the umpires without a hearing, and it takes precedence over any conflicting instruction of this addendum.
- (g) Rules P1 to P4 shall not apply.

Q2 PROTESTS AND REQUESTS FOR REDRESS BY BOATS

Q2.1 While racing, a boat may protest another boat under a rule of Part 2 (except rule 14) or under rule 31 or 42; however, a boat may only protest under a rule of Part 2 for an incident in which she was involved. To do so she shall hail 'Protest' and conspicuously display a red flag at the first reasonable opportunity for each. She shall remove the flag before, or at the first reasonable opportunity after a boat involved in the incident has taken a penalty voluntarily or after an umpire's decision. However, a board need not display a red flag.

Q2.2 A boat that protests as provided in instruction Q2.1 is not entitled to a hearing. Instead, a boat involved in the incident may acknowledge breaking a rule by taking a One-Turn Penalty as described in rule 44.2. If the protested boat does not take a penalty voluntarily, an umpire will decide whether to penalize any boat and signal the decision as provided in instruction Q3.1.

Q2.3 At the finishing line, the race committee will inform the competitors about each boat's finishing place or scoring abbreviation. After this has been done for all boats, the race committee will promptly display flag B with one sound. Two minutes later flag B will be removed with one sound.

- Q2.4** A boat intending to
- (a) protest another boat under a rule other than instruction Q3.2 or Q4.2(a), or a rule listed in instruction Q2.1,
 - (b) protest another boat under rule 14 if there was contact that caused damage or injury, or
 - (c) request redress

shall hail the race committee before or during the display of flag B. The same time limit applies to protests under instructions Q5.4 and Q5.5. The protest committee may extend the time limit if there is good reason to do so.

- Q2.5** The race committee will promptly inform the protest committee about any protests or requests for redress made under instruction Q2.4.

Q3 UMPIRE SIGNALS AND IMPOSED PENALTIES

- Q3.1** An umpire will signal a decision as follows:

- (a) A green and white flag with one long sound means 'No penalty.'
- (b) A red flag with one long sound means 'A penalty is imposed or remains outstanding.' The umpire will hail or signal to identify each such boat.
- (c) A black flag with one long sound means 'A boat is disqualified.' The umpire will hail or signal to identify the boat disqualified.

- Q3.2** (a) A boat penalized under instruction Q3.1(b) shall take a One-Turn Penalty as described in rule 44.2.
- (b) A boat disqualified under instruction Q3.1(c) shall promptly leave the course area.

Q4 PENALTIES AND PROTESTS INITIATED BY AN UMPIRE; ROUNDING OR PASSING MARKS

- Q4.1** When a boat

- (a) breaks rule 31 and does not take a penalty,
- (b) breaks rule 42,
- (c) gains an advantage despite taking a penalty,
- (d) deliberately breaks a rule,
- (e) commits a breach of sportsmanship, or
- (f) fails to comply with instruction Q3.2 or to take a penalty when required to do so by an umpire,

an umpire may penalize her without a protest by another boat. The umpire may impose one or more One-Turn Penalties to be taken as described in rule 44.2, each signalled in accordance with instruction Q3.1(b), or disqualify her under instruction Q3.1(c), or report the incident to the protest committee for further action. If a boat is penalized under instruction Q4.1(f) for not taking a penalty or taking a penalty incorrectly, the original penalty is cancelled.

- Q4.2** (a) A boat shall not round or pass a mark on the wrong side. If she does so, she may correct her error as provided in rule 28.2 only if she does so before she rounds or passes the next mark or finishes.
- (b) When a boat breaks instruction Q4.2(a) and fails to correct her error before rounding or passing the next mark or finishing, an umpire may disqualify her under instruction Q3.1(c).

- Q4.3** An umpire who decides, based on his own observation or a report received from any source, that a boat may have broken a rule, other than instruction Q3.2 or Q4.2(a) or a rule listed in instruction Q2.1, may inform the protest committee for its action under rule 60.3. However, he will not inform the protest committee of an alleged breach of rule 14 unless there is damage or injury.

Q5 PROTESTS; REQUESTS FOR REDRESS OR REOPENING; APPEALS; OTHER PROCEEDINGS

Q5.1 No proceedings of any kind may be taken in relation to any action or non-action by an umpire.

Q5.2 A boat may not base an appeal on an alleged improper action, omission or decision of the umpires or the protest committee. In rule 66 the third sentence is changed to 'A *party* to the hearing may not ask for a reopening.'

Q5.3 (a) Protests and requests for redress need not be in writing.
(b) The protest committee may take evidence and conduct the hearing in any way it considers appropriate and may communicate its decision orally.
(c) If the protest committee decides that a breach of a rule has had no effect on the outcome of the race, it may impose a penalty of points or fraction of points or make another arrangement it decides is equitable, which may be to impose no penalty.

Q5.4 The race committee will not protest a boat, except following a report under rule 43.1(c) or 78.3.

Q5.5 The protest committee may protest a boat under rule 60.3. However, it will not protest a boat for breaking instruction Q3.2 or Q4.2(a), a rule listed in instruction Q2.1, or rule 14 unless there is damage or injury.

