

J/105 NORTH AMERICAN CHAMPIONSHIP

October 30-November 3, 2013

Annapolis, MD USA

Hosted by Annapolis Yacht Club

The Organizing Authority is the Annapolis Yacht Club and the J/105 Class Association (OA)

NOTICE OF RACE

Including Amendment No. 1

1 RULES

- 1.1 The regatta will be governed by the rules as defined in The Racing Rules of Sailing (RRS).
- 1.2 The regatta is designated by the J/105 Executive Committee as an International Class Event and is categorized as Level A in accordance with Class Rule (CR) 3.6.
- 1.3 For this event, the following exceptions to the class rules have been approved by the J/105 Executive Committee. The following modifies CR 6.1:
 - (a) Any J/105 taking part in this event that is based in San Francisco Bay Fleet 1 may elect at registration for this event to have on board and use in this event up to three sails purchased for this event and noted in the J/105 sail data base as "2013 NAC sails." 2013 NAC sails shall conform to the Class Rules in all respects, except will not apply to sail purchase limits (CR 6.8) if all conditions of this section are met.
 - (b) A boat is "based" in San Francisco Bay for this purpose if (a) its home port is within San Francisco Bay, (b) all of its Owners are members of Fleet 1 and (c) during 2012 and 2013, 80% of the regatta days the boat sailed during the 12 months ending on the first regatta day of this event were within San Francisco Bay.
 - (c) 2013 NAC sails shall consist of up to three sails, no more than one jib, mainsail or spinnaker and which may be new or used.
 - (d) 2013 NAC sails shall bear a royalty tag that has been registered with the Class. It is the burden of the owner to identify, in writing, these sails as "2013 NAC sails." If such sails are not identified before the event, normal Class purchase limits will apply.
 - (e) A 2013 NAC sail may be used by the NAC participant in two other events prior to the NAC. If 2013 NAC sails are used in more than two regattas before the NAC, and/or any regatta after the NAC, the sail will immediately apply to that boat's purchase limit for 2013 and/or 2014. It is the burden of the owner to identify the new owner of "2013 NAC sails" after the 2013 J/105 NAC. If a new owner is not identified, in writing, before the end of calendar year 2013, the sails will immediately apply to that boat's purchase limit for 2013 and/or 2014.
 - (f) Any 2013 NAC sail that, in the written opinion of the race committee, is destroyed or so substantially damaged that it cannot reasonably be repaired, may be replaced with another 2013 NAC sail of the same specifications and shape.
- 1.4 US SAILING prescriptions to RRS 60, 63.2 and 63.4 will not apply.
- 1.5 RRS 44.1 will be modified. Both Turns Penalty and Scoring Penalty will apply.
- 1.6 RRS 35 will be changed to provide that boats not finishing within 20 minutes after the first boat to finish will be scored points equal to the last finisher plus 2 without a hearing.
- 1.7 Appendix T Section B, Post-Race Penalties, and Section D, Arbitration will apply.

- 1.8 RRS 62.2 and 66 will be changed to shorten the time on the last day of racing for requesting redress and for requesting that a hearing be re-opened.
- 1.9 RRS 63.7 will be replaced by: "If there is a conflict between a rule in the notice of race and one in the sailing instructions, the sailing instructions shall apply."

2 ADVERTISING

- 2.1 Subject to CR 2.8 and ISAF Regulation 20, ISAF Advertising Code, including ISAF Regulation 20.5.6(a), no advertising shall be permitted on boats. Boats may be required to display advertising chosen and supplied by the OA.

3 ELIGIBILITY AND ENTRY

- 3.1 The regatta is open to all boats of the J/105 Class that conform to the Class Rules.
- 3.2 Eligible boats may enter by completing the Entry Form and submitting the required documentation via online entry website (www.j105nac.com) and paying the required fees.
- 3.3 Entries will not be accepted after 1800 October 11, 2013.
- 3.4 To complete the registration process all required information must be entered in the Regatta Module (link found at www.j105nac.com) and proof of insurance supplied per NOR 21.1 by 1800 on October 28, 2013.
 - (a) To complete the required fields in the Regatta Module, you will need:
 - (i) A copy of the boat's weight certificate
 - (ii) The list of sails and sail tag numbers that will be used in the regatta
 - (iii) The crew list with current ISAF numbers and Group number
 - (iv) To select the time for your inspection

4 CLASSIFICATION

- 4.1 The ISAF Regulation 22, Sailor Classification Code will apply. See www.isaf.org/isafsailor

5 FEES

- 5.1 The entry fee is as follows:
 - (a) US\$ 650 for entries received by 2300 September 13, 2013.
 - (b) US\$ 750 for entries received between 2300 September 13, 2013 and 2300 October 11, 2013.
- 5.2 Entries that do not submit the required documentation set forth in NOR 3.4 and 21.1 prior to 1800 on October 28, 2013 will be assessed a late processing charge of \$100.
- 5.3 Other fees: The entry fee includes invitations to all social events for the Owner/Charterer and invitations for 5 crew members to social events. Additional social packages for crew or family members will be available for purchase at registration.
- 5.4 For out of town boats, rafting will be available at AYC docks at no charge.

6 QUALIFYING SERIES AND FINAL SERIES

- 6.1 If there are 60 or more entries, the regatta may consist of a qualifying series and a final series. If there are 59 or fewer entries, there will be one final series only. Qualifying series scores will be carried forward into the final series.

7 SCHEDULE

- 7.1 Registration will be on Wednesday, October 30, 2013 from 0900 to 1800 at the Annapolis Yacht Club Junior Fleet Building.
- 7.2 Racing is scheduled to begin on Thursday, October 31 and continue through Sunday, November 3. The harbor start is suggested for 0930 each day (Thursday - Sunday). Scheduled time of the warning signal for each day is 1100.
- 7.3 A total of 10 races are scheduled to be sailed. No race will be started after 1400 on Sunday, November 3, 2013.

8 MEASUREMENTS and INSPECTION

- 8.1 To complete the registration process, all boats must register for a measurement time in the Regatta Module (Link found at www.j105nac.com) prior to 1800, October 28, 2013 in order for an entry to be complete and to avoid a late processing fee (see NOR 5.2).
- 8.2 Crew Weigh-in will be on Wednesday, October 30, 2013 from 0900 to 1800. Late crew weigh-in will be available from 0830 to 0900 on Thursday, October 31, 2013 at the Annapolis Yacht Club Junior Fleet Building.
- 8.3 In addition to the inspections and measurements listed elsewhere, any boat, its content and sails may be inspected or measured at any time during the regatta and until 1600 on Sunday, November 3, 2013 as the result of a protest or request of the race committee or Protest Committee.
- 8.4 Changes or substitution of sails listed as those intended to be used in the regatta (including sails that are lost, damaged beyond repair or destroyed) may only be made with the written consent of the race committee.
- 8.5 Additions, changes or substitution of crew may only be made with the written consent of the race committee. Copies of crew lists for all boats will be available for inspection during Crew Weigh-in. Changes to crew lists will be posted on the Official Notice Board located at the Annapolis Yacht Club.
- 8.6 Bow numbers will be assigned by the race committee and given to each participating boat at registration. They shall be affixed to the hull according to the instructions provided by the OA.

9 SAILING INSTRUCTIONS

- 9.1 The Sailing Instructions will be available no later than 0900 on Wednesday, October 30, 2013 at Annapolis Yacht Club, and may be published online at www.j105nac.com.

10 VENUE

- 10.1 Attachment A shows the location of the club and the racing area in the Chesapeake Bay near the mouth of the Severn River.

11 THE COURSES

- 11.1 The courses to be sailed will be windward - leeward. The race committee may utilize a weather offset mark and leeward gate marks.

12 PENALTY SYSTEM

- 12.1 A Boat may take a One-Turn Penalty when she may have broken a rule of Part 2 or RRS 31 While *racing*. However, when she may have broken a rule of Part 2 while in the *zone* around a *mark*, her penalty will be a Two-Turns Penalty. Alternatively, a boat may accept a Scoring Penalty as described in RRS 44.3. The Scoring Penalty shall be 20% of the boats entered unless the incident occurred within the zone of any mark, in which case the scoring penalty shall be 30% of the boats entered. This changes RRS 44.3. RRS 44.1 (a) and (b) will apply.

13 SCORING

- 13.1 The Low Point System, RRS Appendix A will apply, except that each boat's series score will be the total of her race scores. No scores will be excluded.
- 13.2 Ten races are scheduled. Five completed races are required to constitute the series.

14 SUPPORT BOATS

- 14.1 Support boats shall be marked with boat's name or sail number clearly visible on each side.
- 14.2 Support boats (tenders) will not be allowed on the race course and must comply with CR 7.10.
- 14.3 The Sailing Instructions may further limit the activities of support boats so as to not interfere with the conduct of the regatta. Competitors are reminded of RRS 41.

15 BERTHING

- 15.1 Boats shall be kept in their assigned places.

16 HAUL-OUT RESTRICTIONS

- 16.1 Except in an emergency, boats shall not be hauled out during the regatta except with and according to the terms of prior written permission of the race committee, after consultation with the Class Measurer or his designee.
- 16.2 All boats shall be floated by 1800 on Wednesday, October 30, 2013 and shall remain in the water through the end of the regatta, subject to the provisions of 16.1, above.

17 PLASTIC POOLS

- 17.1 From 1800 on Wednesday, October 30, 2013 until the end of the regatta, plastic pools or their equivalent shall not be used or around boats that are sailing in the regatta.

18 RADIO COMMUNICATION

- 18.1 Except in an emergency, a boat shall neither make radio transmissions while racing nor receive radio communications not available to all boats. This restriction also applies to mobile telephones. This restriction does not apply to transmission of Kattack tracking data.
- 18.2 The race committee intends to use VHF Channel 69 to broadcast courtesy information to competitors, including OCS hails after starts. All boats must carry VHF radios capable of transmitting and receiving on US channels 9, 13, 16, 69, 71, 72, 73 and 78.
- 18.3 A boat shall not receive Kattack live tracking data, or replay races on Kattack while on the race course.

19 PRIZES

- 19.1 Prizes will be given to the skipper and crew of the overall 1st through 5th place finishers. Daily prizes will also be awarded.

20 DISCLAIMER OF LIABILITY

- 20.1 Competitors participate in the regatta entirely at their own risk. See RRS 4, Decision to Race. The organizing authority will not accept any liability for material damage or personal injury or death sustained in conjunction with or prior to, during, or after the regatta. Each person racing on board a boat entered in the regatta shall sign a waiver for loss, damage or injury to their person or property in conjunction with the regatta or while on the premises of the Annapolis Yacht Club. The Annapolis Yacht Club, the J/105 Class Association, J/105 Fleet 3, and their members, volunteers, employees, officers and agents shall not be responsible for any loss, damage or injury that may occur to person(s) or property whether ashore or at sea as a consequence of the participation of any boat.

21 INSURANCE

- 21.1 Each participating boat shall be insured with valid third-party liability insurance with a minimum coverage of US\$300,000 per event or the equivalent. Proof of Insurance shall be considered as part of the Entry Form and must be submitted in writing prior to 1800 on October 28, 2013 in order for an entry to be complete.

22 FURTHER INFORMATION

For further information please contact Event Chair Chris Groobey:

e) chris@groobey.com or p) 703-201-9945.

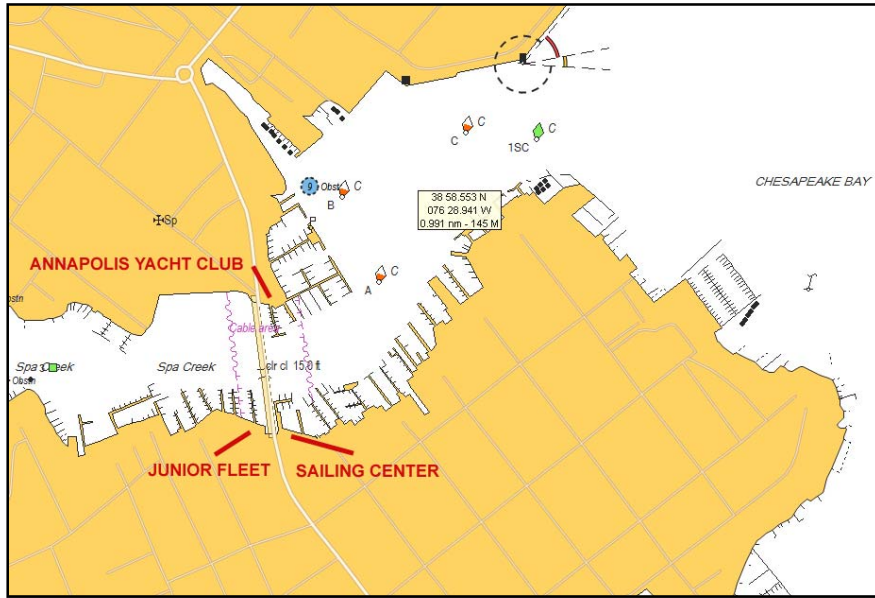
Annapolis YC contact Linda Ambrose:

e) lambrose@annapolisyc.com or p) 410-263-9279

An Entry Form and additional information can also be found at the 2013 J/105 North American's website at www.j105nac.com.

Attachment A

Harbor



Racing Area

