



NSYA Race Mark Series

HALIFAX SHEET

NOT FOR NAVIGATION

Marine Charts

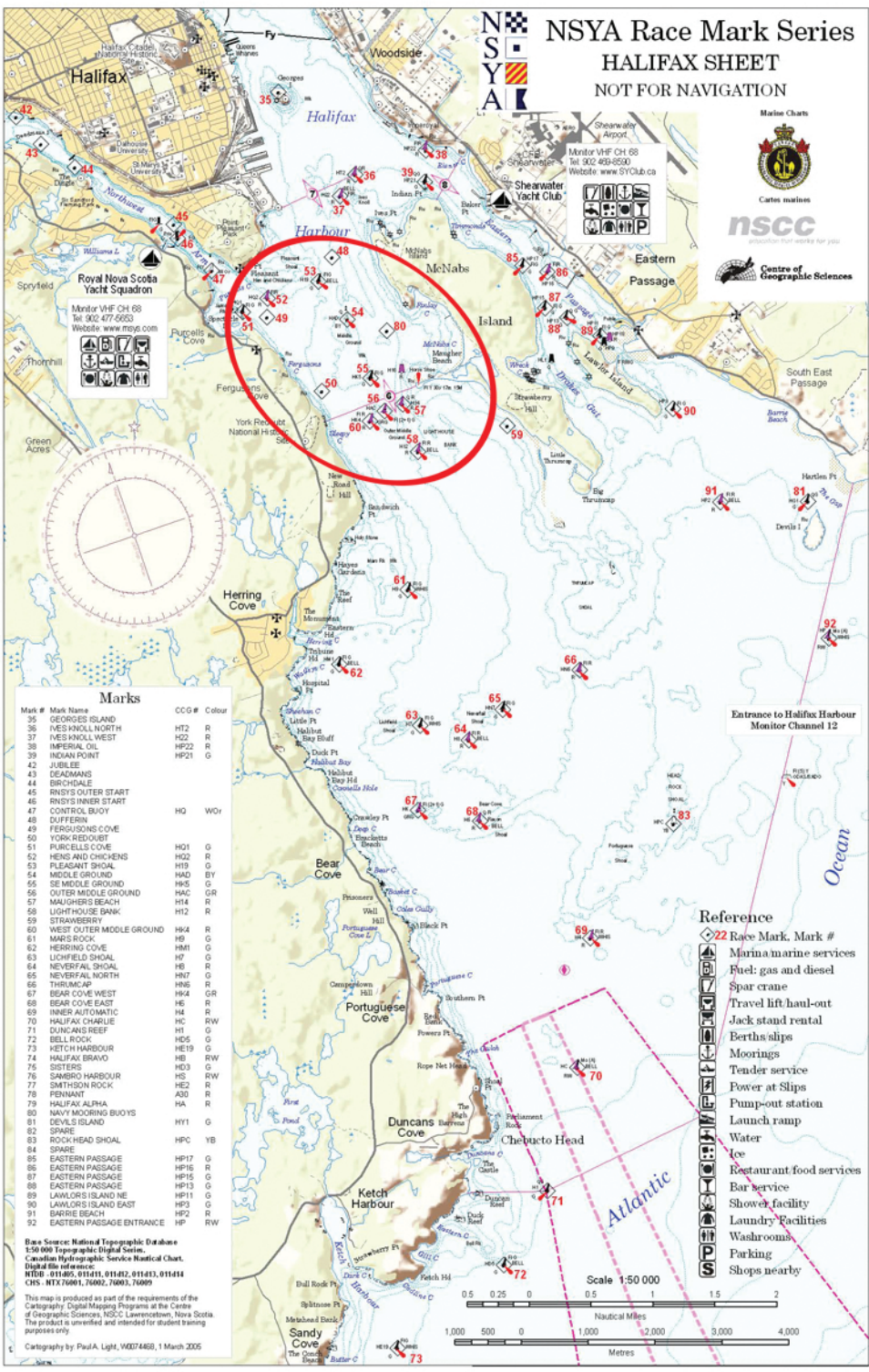


Catsen marines

nscc

association for water for you

Centre of Geographic Sciences



Marks

Mark #	Mark Name	CCG#	Colour
35	GEORGES ISLAND	HT2	R
36	IVES KNOLL WEST	H22	R
38	IMPERIAL OIL	HP22	R
39	INDIAN POINT	HP21	G
42	JUBILEE		
43	SEAGAMANS		
44	BIRCHDALE		
45	RINYS OUTER START		
46	RINYS INNER START		
47	CONTROL BUOY	HQ	WR
48	SUFFERN		
49	FERGUSONS COVE		
50	YORK-REDoubT		
51	MURCELLS COVE	H01	G
52	HENS AND CHICKENS	H02	R
53	PLEASANT SHOAL	H19	G
54	MIDDLE GROUND	HAD	BY
55	SE MIDDLE GROUND	HNS	G
56	OUTER MIDDLE GROUND	HAC	GR
57	MALCHERS BEACH	H14	R
58	LIGHTHOUSE BANK	H12	R
59	STRAWBERRY		
60	WEST OUTER MIDDLE GROUND	H04	R
61	MARS ROCK	H9	G
62	HERRING COVE	H01	G
63	LICHFIELD SHOAL	H7	G
64	NEVERFAL SHOAL	H8	R
65	NEVERFAL NORTH	H07	G
66	THRUMCLAP	H06	R
67	BEAR COVE WEST	H04	GR
68	BEAR COVE EAST	H6	R
69	INNER AUTOMATIC	H4	R
70	HALFAX CHARLIE	HC	RW
71	GUNWINKS REEF	H1	G
72	BELL ROCK	H05	G
73	KETCH HARBOUR	H19	G
74	HALIFAX BRAVO	HC	RW
75	SISTERS	H03	G
76	SANBRO HARBOUR	H5	RW
77	SMITHSON ROCK	H2	R
78	PENNAUT	A30	R
79	HALIFAX ALPHA	HA	R
80	NAVY MOORING BUOYS		
81	DEVILS ISLAND	HY1	G
82	SPIRE		
83	ROCK-HEAD SHOAL	HPC	YB
84	SPARGE		
85	EASTERN PASSAGE	HP17	G
86	EASTERN PASSAGE	HP16	R
87	EASTERN PASSAGE	HP16	G
88	EASTERN PASSAGE	HP13	G
89	LAWLORS ISLAND NE	HP11	G
90	LAWLORS ISLAND EAST	HP9	G
91	BARRIE BEACH	HP2	R
92	EASTERN PASSAGE ENTRANCE	HP	RW

Entrance to Halifax Harbour
Monitor Channel 12

Reference

- Race Mark, Mark #
- Marina/marine services
- Fuel: gas and diesel
- Spar crane
- Travel lift/haul-out
- Jack stand rental
- Berths/ships
- Moorings
- Tender service
- Power at Slips
- Pump-out station
- Launch ramp
- Water
- Ice
- Restaurant/food services
- Bar service
- Shower facility
- Laundry facilities
- Washrooms
- Parking
- Shops nearby

Base Source: National Topographic Database
1:50,000 Topographic Digital Series
Canadian Hydrographic Service Historical Chart
Digital file reference:
NTS# 011460, 011461, 011482, 011483, 011484
CHS: HTX 76001, 76002, 76003, 76009

This map is produced as part of the requirements of the
Canadian Digital Mapping Program at the Centre
of Geographic Sciences, NSCC, Lawrencetown, Nova Scotia.
The product is unclassified and intended for student training
purposes only.

Cartography by Paul A. Light, W0074468, 1 March 2005

Scale 1:50 000

