



Falmouth Yacht Club

290 Clinton Ave
Falmouth, MA 02540

2013 Falmouth Regatta Sailing Instructions

1 RULES

- 1.1 The regatta will be governed by The Racing Rules of Sailing (RRS), 2013 – 2016 and the C420 class rules.
- 1.2 If there is a conflict between the Notice of Race and the Sailing Instructions, the Sailing Instructions shall take precedence. This changes RRS 63.7.
- 1.3 RRS Appendix P applies, with the following modifications:
 - RRS P2.1 is changed to “When a boat is penalized under rule P1 her penalty shall be one of the following. If her penalty is signaled prior to finishing, a two turn penalty under rule 44.2. If she fails to take it she shall be disqualified without a hearing. If her penalty is signaled after she finishes, ten (10) points will be added to her score for that race.
 - RRS P2.2 and P2.3 are eliminated.
- 1.4 No contestant shall use, either on or off the water, alcoholic beverages (beer, wine or distilled spirits) or use any controlled substance (marijuana, cocaine, etc) the possession of which is unlawful. This prohibition is in effect during the entire event, from date and time of arrival through date and time of departure from the Falmouth Yacht Club. Penalties for a violation of the prohibition may range from a reprimand to dismissal from the regatta. A hearing may be held in accordance with the RRS.

2 NOTICES TO COMPETITORS

Notices to competitors will be posted on the official notice boards located downstairs in the Falmouth Yacht Club.

3 CHANGES IN THE SAILING INSTRUCTIONS

Any change in the sailing instructions will be posted before 0830 on the day it will take effect, except that any change to the schedule of races will be posted by 1900 on the day before it will take effect.

4 SIGNALS MADE ASHORE

- 4.1 Signals made ashore will be displayed at the Falmouth Yacht Club yardarm.
- 4.2 Flag 'AP' displayed ashore means "Races are postponed". The first warning signal will be made not less than 30 minutes after the AP displayed ashore is lowered. This changes RRS, Race Signals - AP.

5 SCHEDULE OF RACES

- 5.1 The scheduled time for the warning signal for the first race of each day is 1000.
- 5.2 There is no set number of races scheduled to be run each day. As many races as practicable will be run.
- 5.3 One completed race shall constitute a series.

6 CLASS FLAG

The class flag will be a green flag measuring approximately 18 inches by 30 inches, with a white 420 sail emblem. The alternate class flag is numeral pennant one.

7 RACING AREA, LAUNCHING AND OBSTRUCTIONS

- 7.1 Attachment 'A' shows the location of the racing area.
- 7.2 All boats shall be launched from the beach unless they are stored and launched from within Falmouth Inner Harbor.
- 7.3 Attachment 'B' shows the launching area and the nearby restricted areas. The following areas are designated as obstructions:
 - (a) The Beach Restricted Area shown in Attachment 'B' is the area bounded by the extension of the Tides Motel fence and the extension of the FYC swimming raft. All boats shall stay east of and well clear of the Beach Restricted Area. Any boat which enters the Beach Restricted Area may be disqualified from the race sailed nearest the time of the infringement.
 - (b) Exception to 7.3(a): The management of the Tides Motel will occasionally allow racers who are staying at the Tides Motel store and launch their boats from the Tides beach. These boats are allowed to enter the Beach Restricted Area.
 - (c) The Harbor Restricted Area shown in Attachment 'B' is the area that begins at the outermost ends of the harbor entrance, and includes the Falmouth Inner Harbor. Any boat that enters the Harbor Restricted Area may be disqualified from the race sailed nearest the time of the infringement, unless that boat is stored and launched from within Falmouth Inner Harbor during the regatta.
 - (d) Exceptions to 7.3(b)
 - 1 - Boats that are sailing to their next destination after the conclusion of the Falmouth Regatta may enter the Harbor Restricted Area for the purpose of docking in the FYC basin after they finish the final race on the last day of racing.
 - 2 - Boats that are hauling at the public launching ramp in the Falmouth Inner Harbor may enter the Harbor Restricted Area for the purpose of docking at the public launching ramp after they finish the final race on the last day of racing. Boats sailing to the public launching ramp must keep clear of commercial traffic in the Falmouth Inner Harbor. Any boats that fail to keep clear of commercial traffic in the Falmouth Inner Harbor may be disqualified from the race sailed nearest the time of the infringement.
 - (e) Swimming Area obstructions are any areas marked by swimming area markers and the imaginary straight line connecting adjacent markers.

8 MARKS AND COURSES

- 8.1 Courses shall be those shown on the course attachments.
- 8.2 All courses will utilize portable marks.
- 8.3 The course may include a leeward gate, consisting of a pair of marks of matching size, shape and color. If a gate is in place each yacht shall pass through the gate on the way to the next mark.
- 8.4 When courses 'D' or the trapezoid are sailed, an "offset mark" may be used. If used, the offset mark will be located approximately 6 boat lengths to the side of the weather leg at the weather mark and shall be honored as a mark of the course at each rounding.
- 8.5 If a mark must be replaced, it may be replaced by a mark of a different color.
- 8.6 No later than the warning signal the identifying letter of the basic course selected will be displayed from the Race Committee signal boat. Courses D and M may be modified by additional times around the course. When one of the basic courses is to be modified, the course posting will show numerically the additional laps to be sailed (e.g. D2, M2).
- 8.7 No later than the warning signal, the Race Committee signal boat will display the approximate compass bearing to the first mark.
- 8.8 The approximate distance of the first leg may be displayed from the Race Committee signal boat. Failure to post the approximate distance will not be grounds for redress. This changes rule 62.1(a).

9 THE START

- 9.1 The starting sequence will be as described in RRS 26.
- 9.2 The Race Committee may attempt to hail the boat(s) on the course side of the starting line prior to the starting signal. The Race Committee will attempt to hail boats who are OCS, failure of the boat to hear the Race Committee shall not be grounds for redress.
- 9.2 The starting line will be between a staff displaying an orange flag or shape on a race committee boat and the course side of a nearby mark,
OR
- 9.3 The starting line will be between a staff displaying an orange flag or shape on a race committee boat and a staff displaying an orange flag on another race committee boat on the port-end of the line.
OR
- 9.4 The starting line will be between a staff displaying an orange flag or shape on a race committee boat and a staff displaying an orange flag or shape on a mid-line race committee boat and a staff displaying an orange flag on another race committee boat on the port-end of the line.
- 9.5 If a mid-line boat is used, and starting penalty 30.1 is in effect, an OCS boat must return to the pre-start side of the starting line by crossing an extension of either end of the starting line. She may not sail around the mid-line boat to return to the pre-start side of the starting line.
- 9.6 A boat starting later than 4 minutes after her starting signal will be scored Did Not Start. This changes rule A4.

2013 Falmouth Regatta - Sailing Instructions

10 THE FINISH

- 10.1 The finishing line will be between a staff displaying an orange flag or shape on the race committee finish boat and the course side of a nearby finishing mark, or a staff displaying an orange flag on another race committee boat.
- 10.2 In order to minimize idle time between races, the finishing line for a race may utilize a race committee boat(s) other than those that were used to start that race or that will start a subsequent race.

11 TIME LIMITS

- 11.1 The time limit for each race is 90 minutes.
- 11.2 Boats failing to finish within 30 minutes after the first boat sails the course and finishes will be scored points for the finishing place two more than the number of boats that finished the race. This changes rule 35 and A4. If a boat in last place in a race is delaying the start of another race, the race committee may terminate the race and notify the boat that she will be scored in the place she would have finished.

12 PROTESTS AND REQUESTS FOR REDRESS

- 12.1 For each class, the protest time limit is 60 minutes after the race committee finish boat docks at Falmouth Yacht Club.
- 12.2 Protest notices will be posted within 30 minutes of the protest time limit to inform competitors of hearings in which they are parties or named as witnesses. Hearings will be held on the rear deck of Falmouth Yacht Club.
- 12.3 Notices of protests by the race committee or protest committee will be posted to inform boats under rule 61.1(b).
- 12.4 Breaches of instructions 14, 15, 18 and 19 will not be grounds for a protest by a boat. This changes rule 60.1(a). Penalties for these breaches may be less than disqualification if the protest committee so decides.
- 12.5 RRS 61 is changed to add the following: "In addition to the requirements of RRS 61, a boat must inform the finish boat, immediately after finishing, of its intention to protest."
- 12.6 RRS 61.2(a)(2) is changed as follows: "All boats intending to protest shall conspicuously display a red flag at the first opportunity pursuant to RRS 61.1."
- 12.7 Scoring inquiries must be filed by 0900 hrs on the day following the race in question or two hours after the posting to the preliminary results for that race, whichever is later, except for the last day of racing. For races held the last day of racing, scoring inquiries must be filed within the protest time limit or 20 minutes after the provisional final results are posted, whichever is later.
- 12.8 On the last scheduled day of racing a request for reopening a hearing shall be delivered as follows. This changes RRS 66.
 - if the requesting party was informed of the decision on the previous day, the request to reopen shall be delivered within the time limit
 - if the requesting party was informed of the decision on that day, the request to reopen shall be delivered no later than 30 minutes after the requesting party was informed.
- 12.9 On the last scheduled day of racing a request for redress shall be delivered no later than 30 minutes after the decision has been posted. This instruction changes RRS 62.2

2013 Falmouth Regatta - Sailing Instructions

13 SCORING

The Low Point scoring system of Appendix A will apply, with the following change:

- (a) When fewer than 5 races have been completed, a boat's series score will be the total of her race scores.
- (b) When 5 or more races have been completed, a boat's series score will be the total of her race scores excluding her worst score.

14 SAFETY REGULATIONS

- 14.1 All boats must check in ashore at the Check-In desk before racing begins each day.
- 14.2 All competitors shall wear a properly fastened US Coast Guard approved PFD at all times, except for brief periods while adding or removing clothing.
- 14.3 All competitors must have a whistle attached by a lanyard to their PFD at all times while afloat. The lanyard shall be long enough to permit the sailor to use the whistle while wearing the PFD. Competitors not complying with this instruction shall be given a penalty of five (5) points for each race in which they have failed to observe this instruction.
- 14.2 A boat that retires from the race shall notify the race committee either before leaving the race course area or, if that is impossible, immediately after arriving ashore. Failure to notify the race committee in a timely manner may result in disqualification for the days racing.

15 REPLACEMENT OF CREW OR EQUIPMENT

- 15.1 Substitution of competitors will not be allowed without prior written approval of the race committee.
- 15.2 Substitution of damaged or lost equipment will be allowed without prior approval by the race committee.

16 EQUIPMENT AND MEASUREMENT CHECKS

A boat or equipment may be inspected at any time for compliance with class rules and sailing instructions. On the water, a boat can be instructed by a race committee measurer to proceed immediately to a designated area for inspection.

17 OFFICIAL BOATS

Official boats will be marked by flying a yellow flag with a letter, or a yellow flag with the Race Committee emblem.

18 COACH/SUPPORT BOATS AND SPECTATOR BOATS

18.1 General coach/support and spectator boat requirements.

- Team leaders, coaches, other support personnel and spectators shall stay outside areas where boats are racing from the time of the preparatory signal for a race until all boats have finished that race, or until the race committee signals a postponement, general recall or abandonment.
- Coach/support boats must register prior to the first competitors' meeting on the first day of racing with the Organizing Authority and fly a flag with a number provided by the Organizing Authority (a \$20 cash deposit will be required) at all times while on the water. Coach/support boats shall carry a working VHF radio and monitor the race committee channel.
- Spectator boats must register prior to the first competitors' meeting on to the first day of racing with the Organizing Authority and fly a blue flag with a number provided by the Organizing Authority (a \$20 cash deposit will be required) at all times while on the water.
- Coach/support and spectator boats shall follow the instructions of race committee, safety, judges, and race management boats. Coach/support boats are responsible for helping all boats in distress, not just their own.
- No coach/support or spectator boat shall tie up to or congregate around any aid to navigation, such as buoys or channel markers.

18.2 Coach/support and spectator boat Restrictions

- All coach/support and spectator boats shall stay clear of the racing area at all times while boats are racing, except where permitted in this instruction.
- All coach/support and spectator boats shall stay more than 100 yards away from any racing boat 50 yards outside the racing area, whichever is greater and move slowly and with minimal wake.
- All coach/support and spectator boats shall stay out of the starting area at all times.

18.3 Coach/support and spectator boats that break SI 19 may be subject to disciplinary actions up to and including exclusion from the venue.

19 DISCHARGE OF TRASH

Discharge of trash into the water by competitors, support boats, race committee, judges, or safety boats is prohibited.

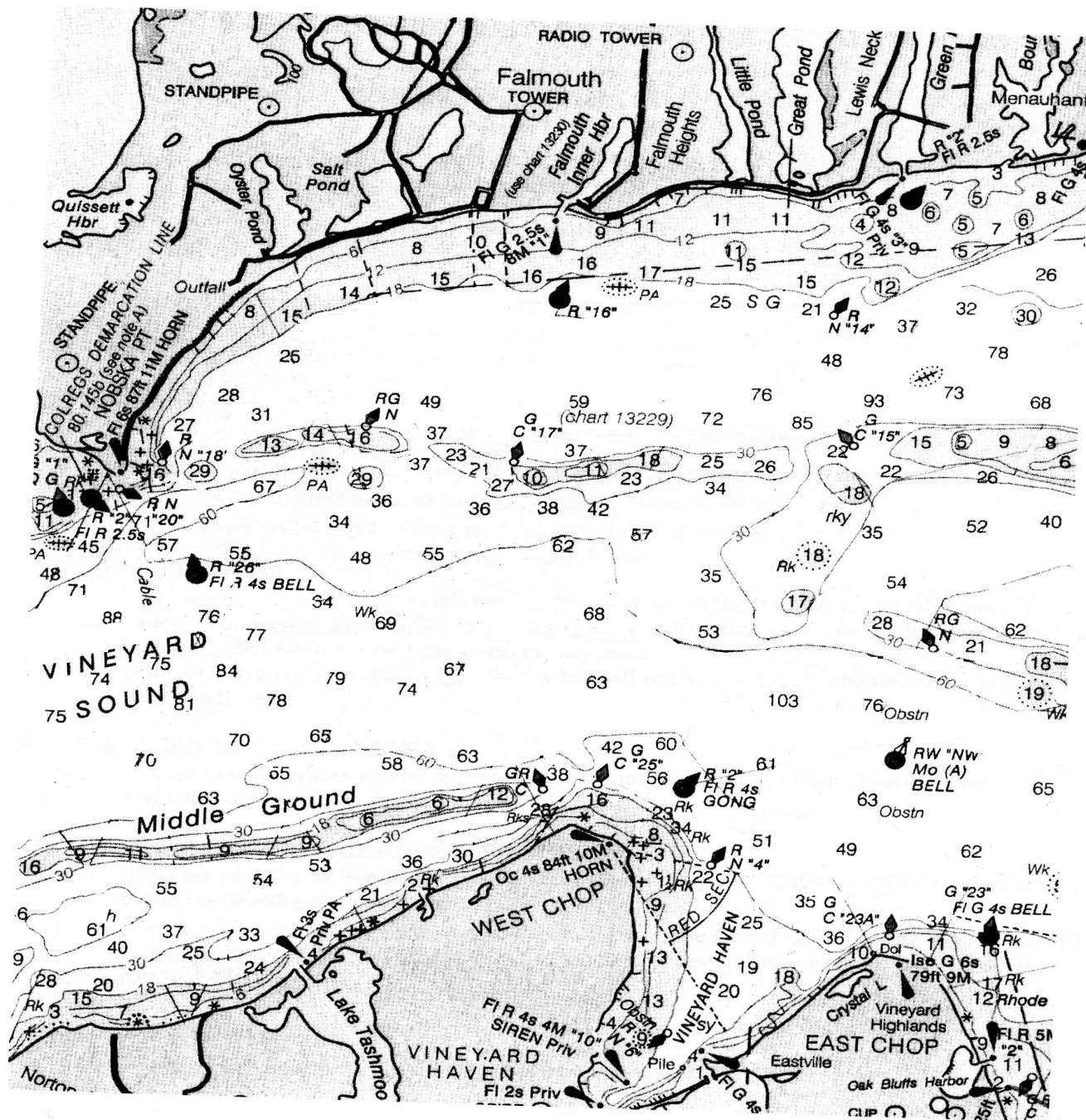
20 RADIO COMMUNICATION

A boat shall neither make radio transmissions while racing nor receive radio communications not available to all other boats. This restriction also applies to mobile telephones.

21 DISCLAIMER OF LIABILITY

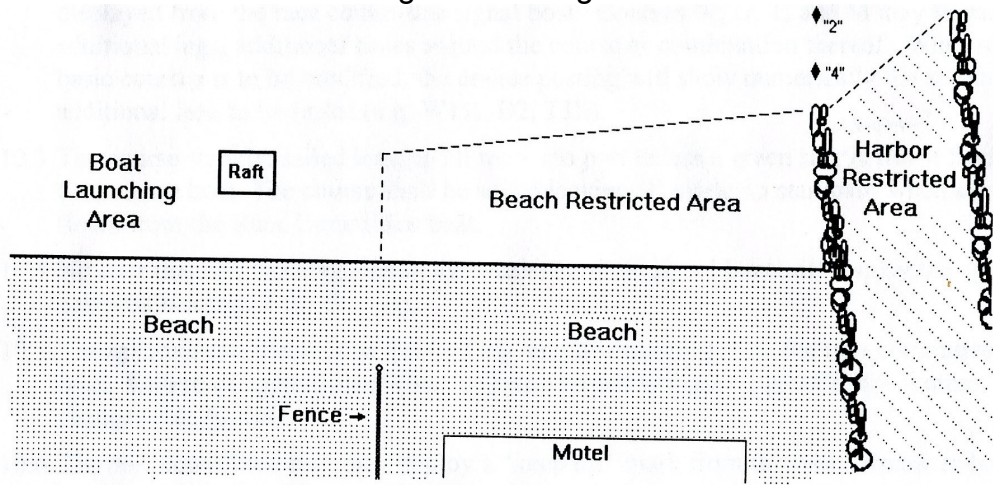
Competitors participate in the regatta entirely at their own risk. See rule 4, Decision to Race. The organizing authority will not accept any liability for material damage or personal injury or death sustained in conjunction with or prior to, during, or after the regatta.

2013 Falmouth Regatta - Sailing Instructions
Falmouth Yacht Club Regatta- Sailing Instructions



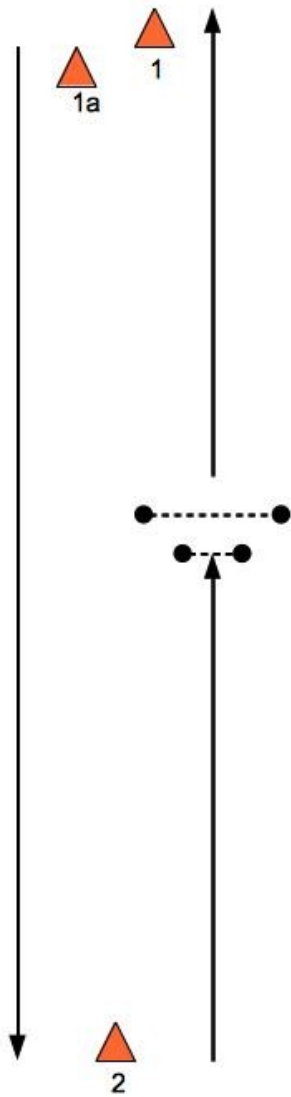
ATTACHMENT "A"

2013 Falmouth Regatta - Sailing Instructions

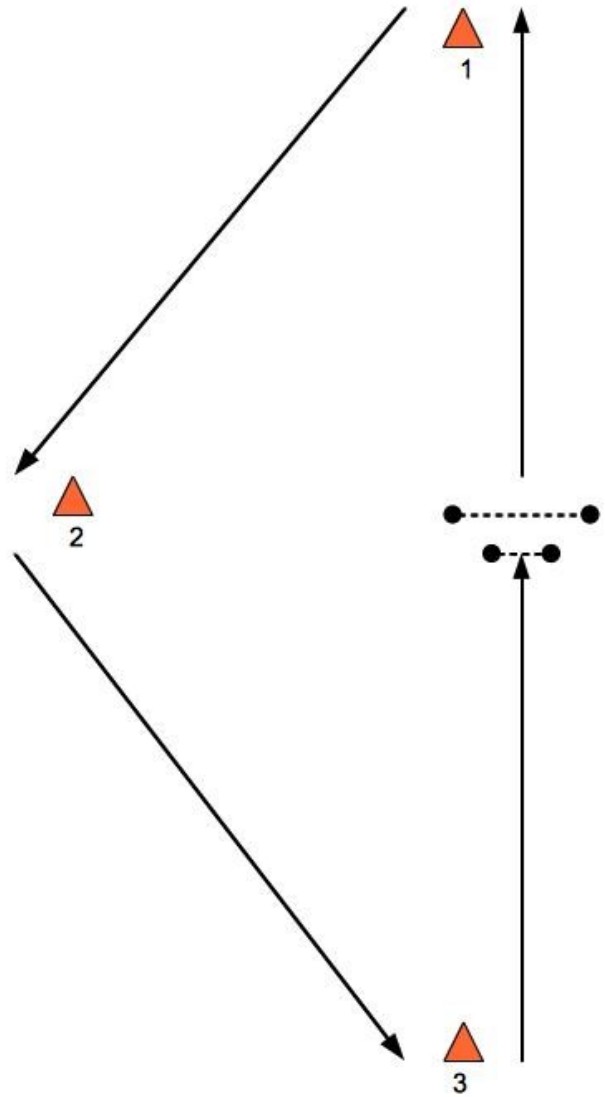


ATTACHMENT "B"

2013 FALMOUTH REGATTA
COURSE ATTACHMENT - 1 of 2



COURSE "D"
Start-1-1a (if present)-2-
Finish



COURSE "M"
Start-1-2-3-Finish

2013 FALMOUTH REGATTA
COURSE ATTACHMENT – 2 of 2

