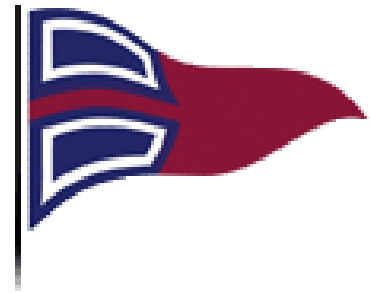


MILES RIVER YACHT CLUB

2013 Log Canoe
Governor's Cup Weekend Regatta
July 27th and July 28th, 2013

Sailing Instructions



1. **ELIGIBILITY:** Only boats owned by members of the Chesapeake Bay Log Sailing Canoe Association (CBLSCA) are eligible.
2. **ENTRIES:** All contestants shall register at the Regatta Network site or with the Miles River Yacht Club (MRYC) Race Committee (RC) on Saturday, July 27, 2013 from 8:30 to 9:00. **A Skipper's meeting is scheduled at 9:00 on Saturday.** There is no entry fee.

<http://www.regattanetwork.com/event/6299>



3. **RACING RULES:** The regatta will be governed by *The Racing Rules of Sailing*, the prescriptions of US Sailing, as modified by CBYRA, the rules of CBLSCA, except as any of these are changed by the sailing instructions, by the PRO at the skipper's meeting, or by these sailing instructions. Changes made at skipper's meeting will be posted in writing immediately following the meeting on the official notice board in the clubhouse hallway.
4. **COURSE:** The course will be displayed at the Committee boat prior to the Warning Signal. It will consist of a sequence of letters, each indicating the next mark to round. The letters will be displayed to starboard. (Course sheet attached and is available at registration or can be found at milesriveryc.org the MRYC web site.)

5. SCHEDULE OF RACES:

<u>Race</u>	<u>Date</u>	<u>Warning Signal</u>
Covington/Harrison	Sat July 27	1000
Oliver Duke	Sat July 27	1400
Governor's Cup	Sun July 28	1000

6. **START:** Signals will be at 5-minute intervals. Times shall be taken from the visual signals; failure of a sound signal shall be disregarded. Signals will be as follows:

WARNING	10 minutes	Yellow shape	sound
PREP	5 minutes	Blue shape	sound
START	0	Red shape	sound

The starting line will be between the orange flag on the committee boat and a nearby Club or course mark. There may be a barging buoy set aft of the Committee boat. Do not enter this area. No race will be started in less than 3 knots of wind. The decision to start a race shall be made by each skipper on his own responsibility. Competitors participate in the regatta entirely at their own risk.

7. **RECALLS:** Individual recalls will be signaled by Code Flag "X" and one blast of the horn. The committee will hail the sail number(s) of premature starters. Whether or not hail is heard, responsibility for starting properly rests with each skipper.
8. **GENERAL RECALL** will be signaled by display of Code Flag "First Substitute" and two guns. Warning signal will replace this signal one minute after it is lowered (one sound of horn will accompany the lowering of the signal).

9. **PENALTIES:** For mark and competitor infringements to the rules, a one penalty turn will be used to exonerate the guilty party. Refer to RRS 44.2 and substitute one turn wherever a two turn penalty is mentioned. *If a competitor makes contact with the Committee boat and as a result of such contact, damage occurs to the Committee boat and/or injury is sustained by any of the Race Committee crew, the offending yacht shall retire immediately from that race. No penalty will be allowed. (This modifies RRS Rule 44)*

10. **FINISH:** The finish line will be between the orange flag on the committee boat and the nearby mark of the course.

11. **TIME LIMIT:** The first boat must cross the finish line within the times listed below. The Race Committee may call the race sooner at its discretion:

2 ½ HOURS – when 2 races scheduled in day.

3 HOURS – when 1 race is scheduled for the day.

Any boat that finishes 45 minutes after the first boat has finished shall be scored as DNF.

A minimum of ONE hour shall be allowed between the time of the last place finisher and the warning signal for a succeeding race, unless there have been back to back races agreed upon beforehand.

12. **PROTESTS:** Red flag must be flown before and after announcement to the committee boat. Time limit for filing a written protest is 60 minutes after the committee boat returns to dock after the last race for the day. Time and location of the protest hearing will be posted on the official notice board. All protests shall be made in writing in a clear and comprehensive manner setting forth all details and names of witnesses. CBYRA protest forms can be found in the back of the Greenbook or in the MRYC office. All involved parties shall report to the designated protest area and remain easily available.

13. **SAFETY:** All canoes shall have a chase boat/tender with life jackets for all the crew. All canoes must have a life ring or throwable cushion with a rope. Any crewmember who cannot swim must wear a life jacket. It is the sole responsibility of the owner and/or skipper that these requirements are met.

14. **SCORING:** The low point scoring system described in RRS Appendix A will apply. A boat is considered registered for the 2013 season and will be scored in each race. If a boat does not compete in a regatta, she will be scored as DNC.

15. **TROPHIES:** The Trophy Award Ceremony is scheduled for approximately 4:00 pm on Sunday.

SPECIAL SIGNALS:

16. CODE FLAG “**AP**”: POSTPONED (Red and white vertical stripes) accompanied by two guns, one horn sound when lowered. All races not started are postponed. The warning signal will be made one minute after the signal is lowered.

17. CODE FLAG “**N**”: ABANDONED (blue and white checkered) accompanied by three guns. All races that have started are abandoned. **Return** to starting area..

18. CODE FLAG “**N**” OVER “**H**” and three guns. All races are ABANDONED. Further signals ashore.

19. CODE FLAG “**S**”: SHORTENED COURSE (white with blue square) accompanied by two guns. Shorten course finish between mark and orange flag on committee boat. Change of course, other than to shorten a race, will **not** be done.

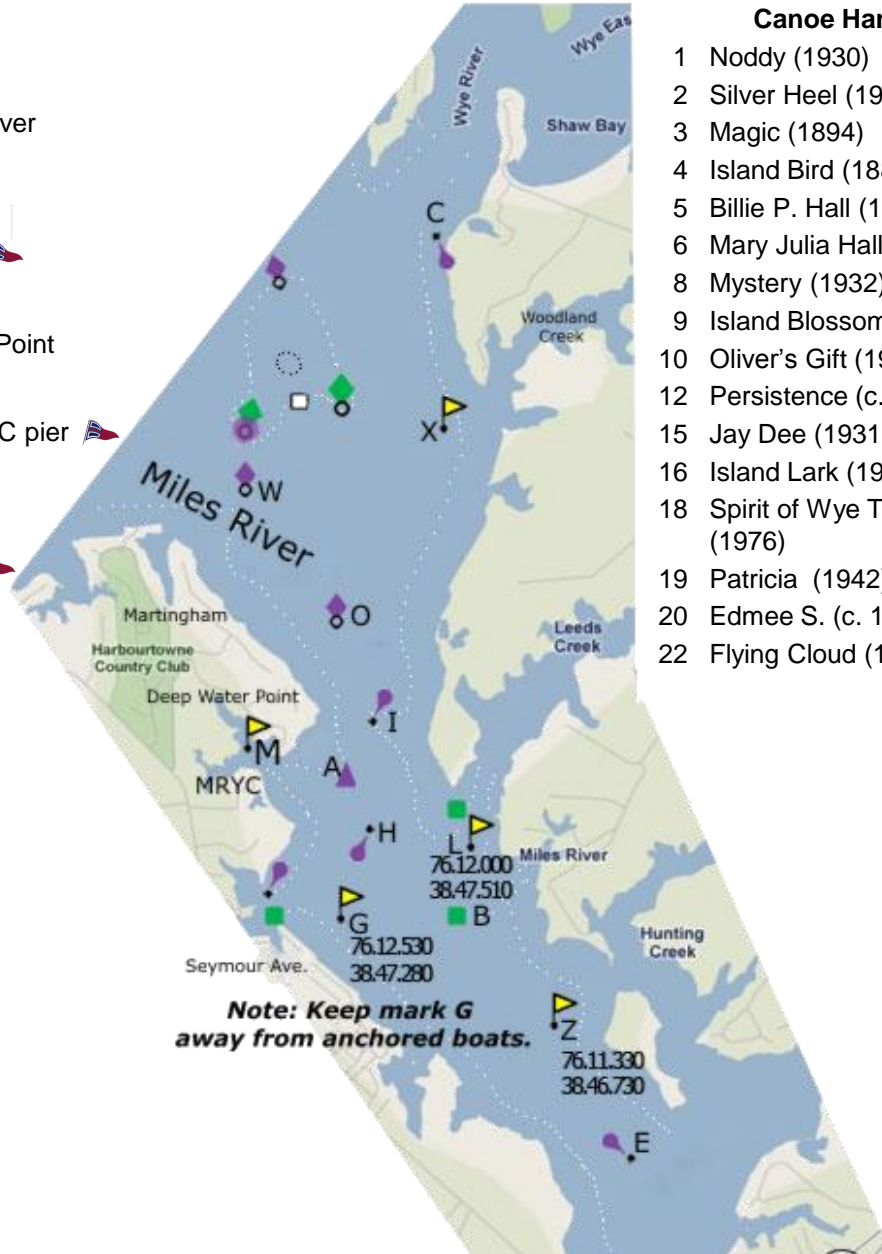
20. CODE FLAG “**L**”: COME WITHIN HAIL (yellow and black squares) or FOLLOW ME

21. CODE FLAG “**M**”: (blue with white X) round the vessel displaying this signal instead of the mark which it replaces.

Miles River Yacht Club Log Canoe Race Sheet

Log Canoe Course Marks

- A** Red #2 off entrance to MRYC
- B** Green #5 day marker, middle of river
- C** Red #4 off mouth of Wye River
- E** Green #7 flasher near Oak Creek
- G** Club mark off Seymour Avenue
- H** Red #4 flasher middle of river
- I** Green #1 flasher off Deep Water Point
- L** Club mark off Leeds Creek
- M** Club mark off east corner of MRYC pier
- O** Red #12 nun off Martingham
- W** Red #10 nun off Harbourtowne
- X** Club mark off Woodland Creek
- Z** Club mark off Hunting Creek



Canoe Handicaps

1	Noddy (1930)	76.68
2	Silver Heel (1902)	34.68
3	Magic (1894)	31.68
4	Island Bird (1882)	82.92
5	Billie P. Hall (1903)	32.10
6	Mary Julia Hall (1895)	54.36
8	Mystery (1932)	17.28
9	Island Blossom (1892)	44.94
10	Oliver's Gift (1947)	47.22
12	Persistence (c. 1890)	46.68
15	Jay Dee (1931)	00.00
16	Island Lark (1901)	32.40
18	Spirit of Wye Towne (1976)	80.40
19	Patricia (1942)	72.96
20	Edmee S. (c. 1930)	40.14
22	Flying Cloud (1932)	08.22

Mark	A	B	C	E	G	H	I	L	M	O	W	X
B	1.088											
C	2.896											
E	2.669	1.582										
G	0.685	0.571	3.552	2.097								
H	0.326	0.763	3.125	2.343	0.429							
I	0.245	1.211	2.667	2.773	0.890	0.409						
L	0.688	0.447		1.999	0.474	0.414	0.775					
M	0.334	1.353		2.930	1.366	0.585		0.993				
O	0.697	1.658	2.200	3.189	1.366	0.882	0.476	1.212				
W		2.742	1.548	4.286			1.532	2.300		1.098		
X	1.936		0.961		2.590	2.095	1.706			1.241	0.873	
Z	1.613	0.533		1.060	1.087	1.340	1.713	0.939	1.885	2.136	3.232	