

# MILES RIVER YACHT CLUB

## 2013 Annual Regatta

### Sailing Instructions Ammendment # 1

August 3 and 4, 2013



1. **RULES:** The regatta shall be governed by the rules as defined in *The Racing Rules of Sailing*.
2. **ENTRIES:** Competitors should complete entries on Regatta Network at <http://www.regattanetwork.com/event/6300>. Registration will also be available in person on race days as described below. The entry fee is \$25.00.
3. **NOTICES TO COMPETITORS:** Notices to competitors shall be posted on the official notice board located in the entrance to the Club.
4. **CHANGES TO SAILING INSTRUCTIONS:** Any change to the sailing instructions or schedule of races shall be posted on the official notice board before 9:15 am.
5. **SCHEDULE OF EVENTS: One-design and Sport Boats race Saturday Only and PHRF Boats race Sunday Only.**

	SATURDAY 8/3/13	SUNDAY 8/4/13
Registration	8:30 – 9:00 am	8:00 – 8:30 am
Skippers' Meeting	9:15am	8:45 am
1 <sup>st</sup> Warning Signal	10:30am	10:00 am
PM warning Signal	No start after 3:00	No start after 2:00 pm
Trophy Awards	About 4:00 pm	About 3:00 pm

Check the signal boat for a course board after each race to see if additional races are planned.

6. **CLASSES AND CLASS FLAGS:** Class starting order and flags are listed below. Note that this is a one-day regatta for all classes.

**a. Saturday 8/3/13 South Course**

CLASS	FLAG
Star	Star Class Flag
Sport Boats	Numeral Pennant "1"
Chesapeake 20	WRSC Burgee

**b. Saturday 8/3/13 North Course**

CLASS	FLAG
420	420 Class Flag
Laser	Laser Class Flag
Penguin	Penguin Class Flag

**a. Sunday 8/4/13 South Course**

CLASS	FLAG
PHRF	Numeral Pennant "1"
Chesapeake 20	WRSC Burgee

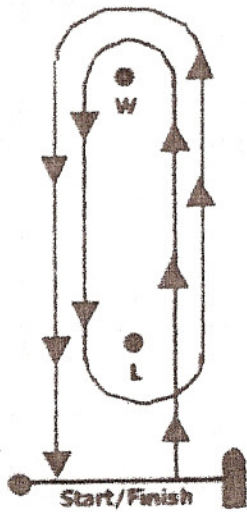
**Note that competitors are NOT required to display class flags**

7. **RACING AREA:** The North Race Course will be in the area just south of Red #4 flasher (off St. Michaels harbor). The South Race Course will be in the vicinity of Green #5 day marker off of Rio Vista.

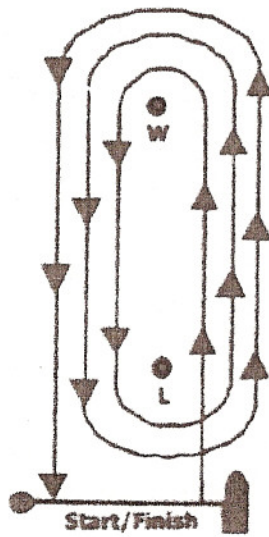
8. **THE COURSES:** The courses for Saturday are described in appendix A. Sunday Courses will be posted on the race committee boat as a sequence of letters representing the marks illustrated on the Appendix B Chart. Green letters shall be left to starboard and red letters shall be left to port.
9. **MARKS:** On Saturday all marks will be inflatable club drop marks. On Sunday marks will be a combination of government buoys and drop marks as shown in Appendix B.
10. **START/FINISH:** The start and finish line shall be between the orange/yellow flag on the signal boat and the adjacent club mark or government mark as described in the course appendices.
11. **TIME LIMITS:** The time limit for any one race is 90 minutes.
12. **PROTESTS:** All protests and requests for redress must be submitted in writing to the Race Committee within 60 minutes of the Race Committee docking at the Club. Notices of protests shall be posted no later than 60 minutes after the protest time limit.
13. **SCORING:** The low point scoring system of RRS Appendix A shall apply. One completed race constitutes a series. Each boat's series score shall be the total of her race scores unless four (4) or more races are completed and then she may exclude her worst score.
14. **PRIZES:** Trophies will be awarded to the 1st and 2nd finishers in each class. In addition to handicap trophies for Sport Boats based on PHRF ratings, a one-design 1st place trophy will be awarded for any class of Sport Boat with three or more competitors. The Awards ceremonies are scheduled at 4:00 pm on Saturday and 3:00 pm Sunday following the racing.
15. **DISCLAIMER OF LIABILITY:** Competitors participate in the regatta entirely at their own risk. See rule 4, Decision to Race. The Miles River Yacht Club will not accept any liability for material damage or personal injury or death sustained in conjunction with or prior to, during, or after the regatta.

**APPENDIX A: COURSE DIAGRAMS**

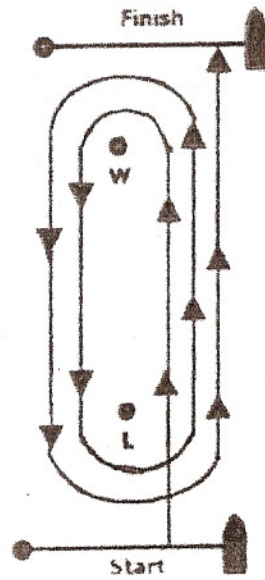
**COURSE A**



**COURSE B**

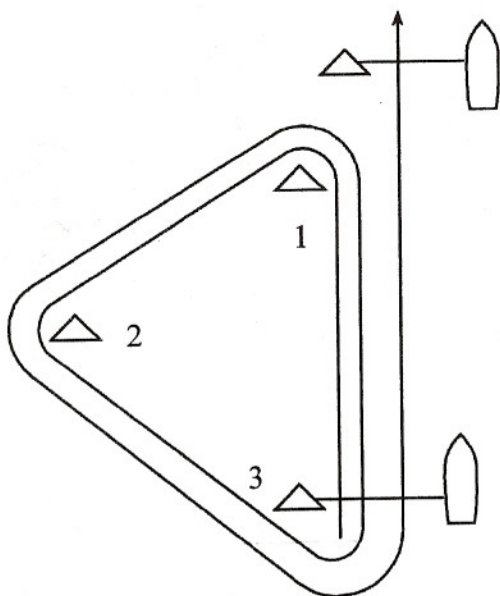


**COURSE C**



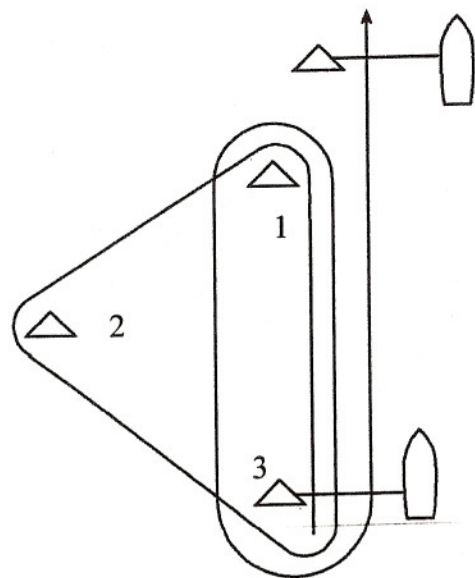
**COURSE T**

(Start - 1 - 2 - 3 - 1 - 2 - 3 - Finish)



**COURSE M**

(Start - 1 - 2 - 3 - 1 - 3 - Finish)

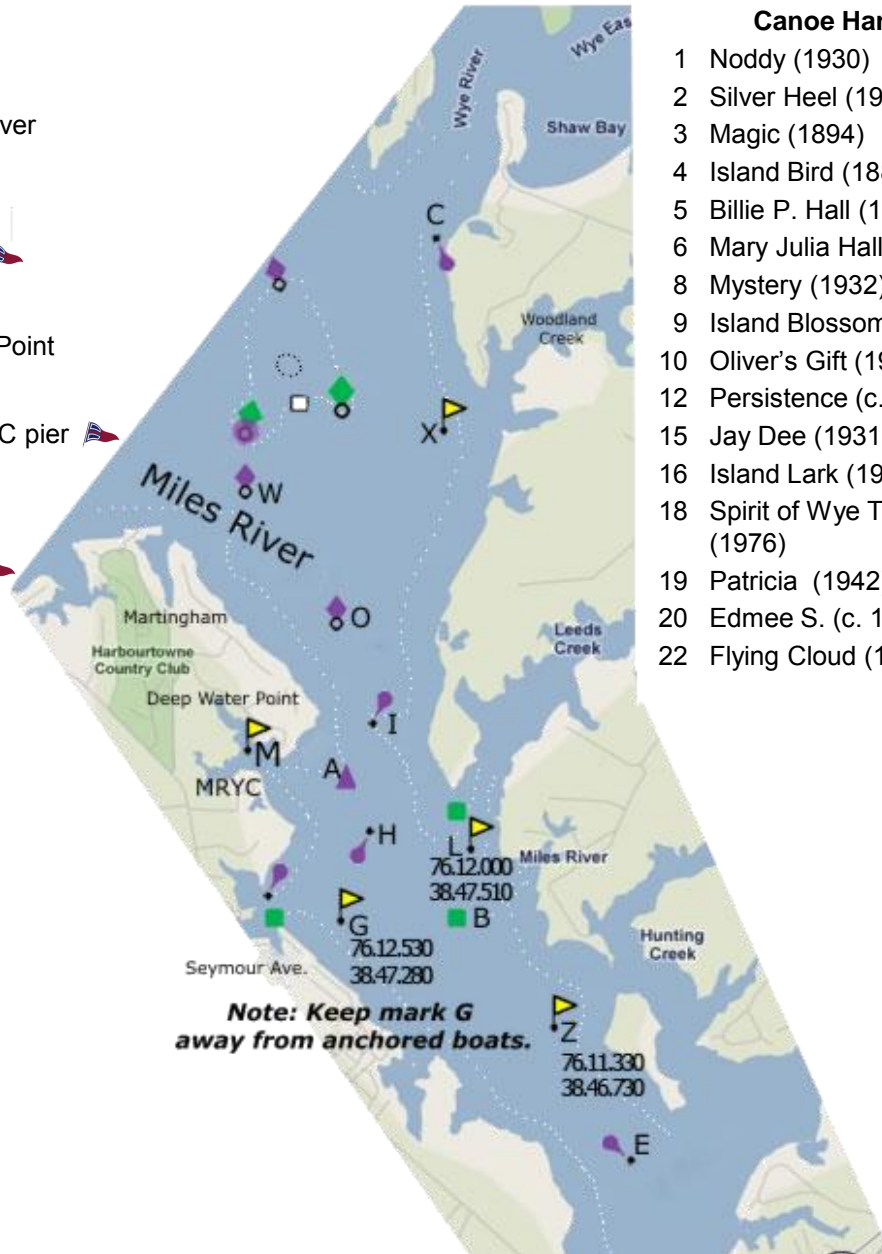




# Miles River Yacht Club Log Canoe Race Sheet

## Log Canoe Course Marks

- A** Red #2 off entrance to MRYC
- B** Green #5 day marker, middle of river
- C** Red #4 off mouth of Wye River
- E** Green #7 flasher near Oak Creek
- G** Club mark off Seymour Avenue
- H** Red #4 flasher middle of river
- I** Green #1 flasher off Deep Water Point
- L** Club mark off Leeds Creek
- M** Club mark off east corner of MRYC pier
- O** Red #12 nun off Martingham
- W** Red #10 nun off Harbourtowne
- X** Club mark off Woodland Creek
- Z** Club mark off Hunting Creek



## Canoe Handicaps

1	Noddy (1930)	76.68
2	Silver Heel (1902)	34.68
3	Magic (1894)	31.68
4	Island Bird (1882)	82.92
5	Billie P. Hall (1903)	32.10
6	Mary Julia Hall (1895)	54.36
8	Mystery (1932)	17.28
9	Island Blossom (1892)	44.94
10	Oliver's Gift (1947)	47.22
12	Persistence (c. 1890)	46.68
15	Jay Dee (1931)	00.00
16	Island Lark (1901)	32.40
18	Spirit of Wye Towne (1976)	80.40
19	Patricia (1942)	72.96
20	Edmee S. (c. 1930)	40.14
22	Flying Cloud (1932)	08.22

Mark	A	B	C	E	G	H	I	L	M	O	W	X
B	1.088											
C	2.896											
E	2.669	1.582										
G	0.685	0.571	3.552	2.097								
H	0.326	0.763	3.125	2.343	0.429							
I	0.245	1.211	2.667	2.773	0.890	0.409						
L	0.688	0.447		1.999	0.474	0.414	0.775					
M	0.334	1.353		2.930	1.366	0.585		0.993				
O	0.697	1.658	2.200	3.189	1.366	0.882	0.476	1.212				
W		2.742	1.548	4.286			1.532	2.300		1.098		
X	1.936		0.961		2.590	2.095	1.706			1.241	0.873	
Z	1.613	0.533		1.060	1.087	1.340	1.713	0.939	1.885	2.136	3.232	