



BIG THREE REGATTA
Vasconcellos Offshore
Parker Beach Fleet
Beer Can Bash
Saturday March 9th 2013
Waikiki Yacht Club
Honolulu, Hawaii

SAILING INSTRUCTIONS
AMENDMENT

6 CLASS FLAGS

The class flags and start sequences are:

PH X & A	Black with 1
PH C & IFYR	Light Green with C

8 COURSES For PH X & A Only

Courses will be determined based on the wind direction at the time of the regatta.

Course 1: Start – Mark 1 to Port – Mark 2 to Port – Finish.
See Revised PH X & A Course Map

Course 2: Start – Mark 1 to Port – Mark 2 to Port– Mark 1 to Port – Mark 2 to Port –
Finish.
See Revised PH X & A Course Map



BIG THREE REGATTA
Vasconcellos Offshore
Parker Beach Fleet
Beer Can Bash
Saturday March 9th 2013
Waikiki Yacht Club
Honolulu, Hawaii

SAILING INSTRUCTIONS

1 RULES

The regatta will be governed by the rules as defined in the current *Racing Rules of Sailing*, the prescriptions of US SAILING, the prescriptions of HYRA, pertinent Class/Fleet Rules, by the Waikiki Yacht Club Standing Sailing Instructions, this Notice of Race and the Sailing Instructions.

1.1 Racing rule 52 will be changed as follows:
The use of powered winches is authorized.

1.2 6.4 Redress: RRS 60, 63.2, 63.4 USSailing Prescriptions to RRS 60
(Participation Committee composition) are deleted.

2 NOTICES TO COMPETITORS

Notices to competitors will be posted on the official notice board located in the WYC card room.

3 CHANGES TO THE SAILING INSTRUCTIONS

Any change to the sailing instructions will be posted before 0900 on the day it will take effect, except that any change to the schedule of races will be posted by 2000 on the day before it will take effect.

4 SIGNALS MADE ASHORE

Signals made ashore will be displayed from the WYC flagpole.

5 SCHEDULE OF RACES

The first warning will be at 1225 March 9, 2013.
Subsequent starts will be in approximately five minute intervals.

6 CLASS FLAGS

The class flags and start sequences are:

PH X & A	Black with 1
PH B	Yellow with 1
PH C & IFYR	Light Green with C

7 RACING AREA

The racing area will be between Diamond Head and Honolulu Harbor entrance. See attached maps for course location and configuration.

8 COURSES

Courses will be determined based on the wind direction at the time of the regatta.

Course 1: Start – Mark 3 to Port – Mark 1 to Port – Finish. See PH X & A Course Map

Course 1A: Start – Mark 1 to Port – Mark 3 to Port – Finish. See PH X & A Course Map

Course 2: Start – Mark 2 to Port – Mark 1 to Port – Finish. See PH B Course Map

Course 2A: Start – Mark 1 to Port – Mark 2 to Port – Finish. See PH B Course Map

Cruiser Course South: Start – HH to Starboard – DH to Port - Finish at G1.

See attached maps for more details.

Cruiser Course: Start – Mark 1 to Starboard - DH to Port - HH to Starboard – Finish at G1.

9 STARTING AND FINISHING LINES

The starting and finishing line will be between two yellow inflatable tetrahedrons.

The finish line for the cruising course will be between G1 and a yellow inflatable tetrahedron.

10 MARKS

The Marks will be orange tetrahedrons.

11 TIME LIMIT

The time limit for each race will be two hours for the first boat to finish.

12 PROTESTS

Protests shall be delivered to WYC within 45 min. after the race committee boat docks. The protest time limit and a list of protests received will be posted on the notice board. Hearings will be held as soon as possible after racing at WYC.

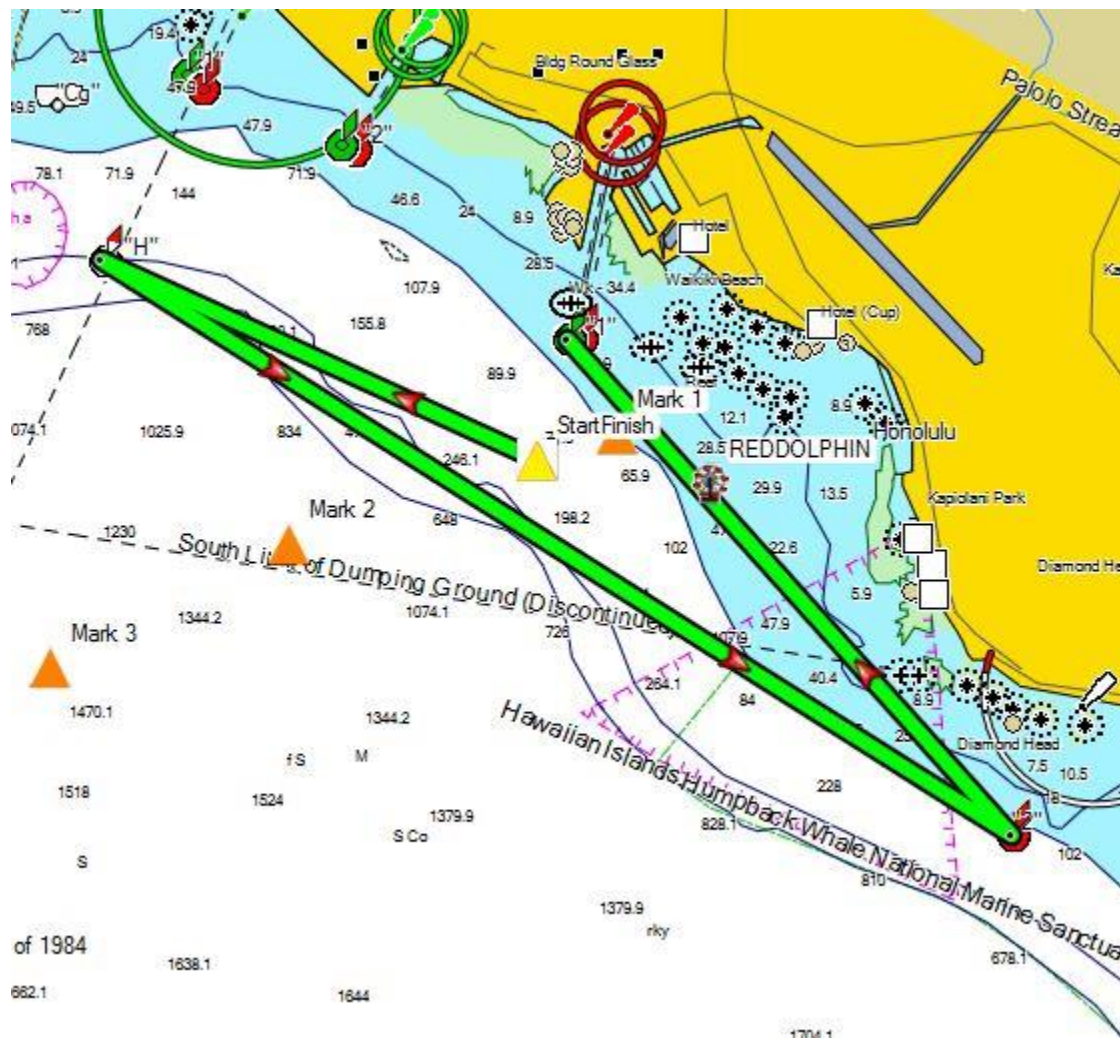
13 SCORING

Yachts will be scored in class.

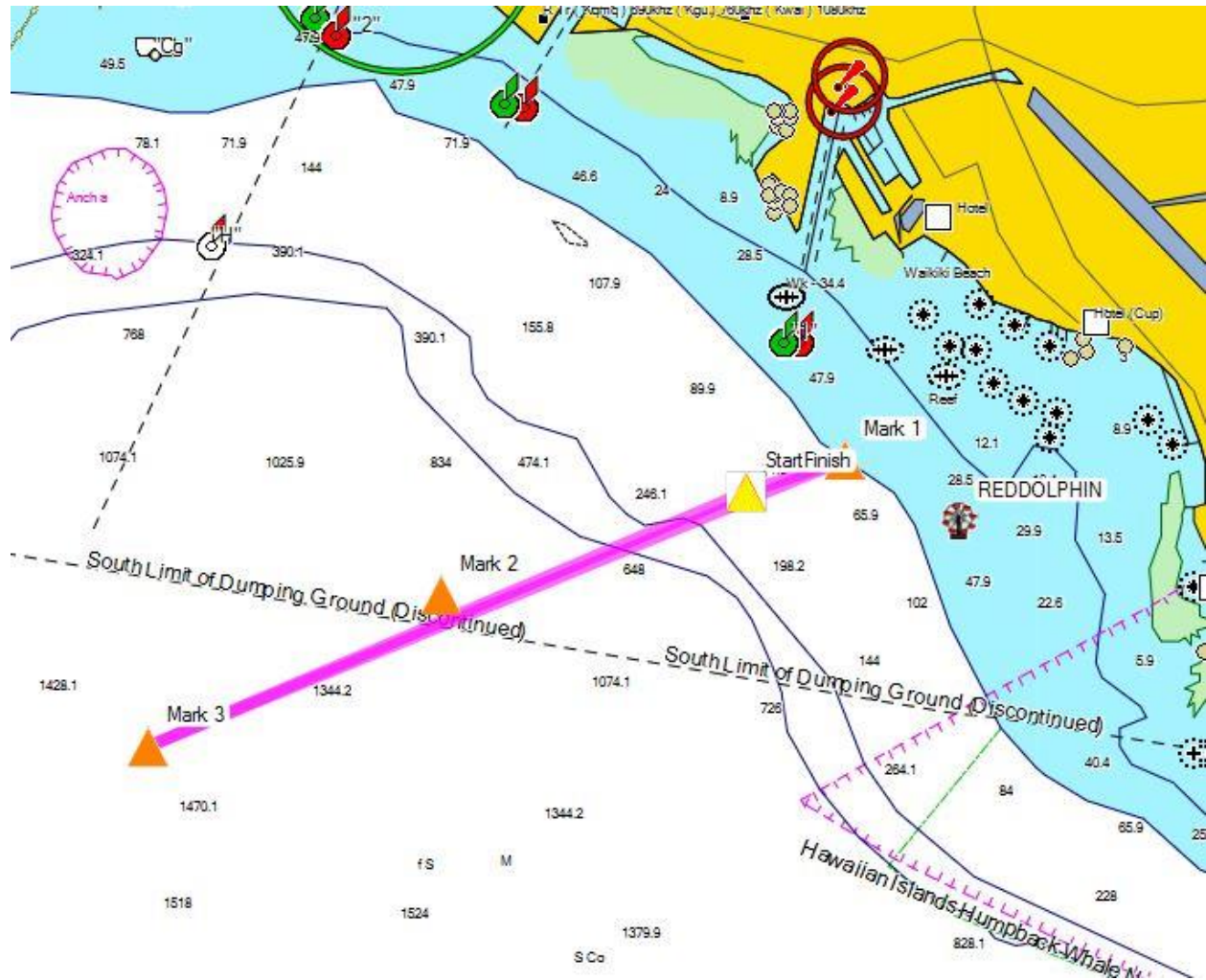
14 PRIZES

Awards will be at WYC after the event.

Cruising Course South



PH X & A Course



PH B Course

