



2013 Laser Masters North American Championship



October 18-20, 2013
Newport, Rhode Island

SAILING INSTRUCTIONS

1 RULES

- 1.1 The regatta will be governed by the Racing Rules of Sailing (RRS), the prescriptions of US SAILING (except the prescriptions to RRS 60, 63.2 and 63.4 shall not apply), the International Laser Class Association (ILCA) Class Rules and the Notice of Race, except as any of these are changed by the sailing instructions, including any appendices.
- 1.2 The Organizing Authority (OA) is the New York Yacht Club Regatta Association.
- 1.3 The official regatta website is at <http://nyyc.org/yachting/racing/laser-masters-north-americans>.
- 1.4 RRS 40 is deleted and replaced with: "Competitors shall wear personal flotation devices, except briefly while changing clothing or personal equipment. Wet suits and dry suits are not personal flotation devices." Note that Flag "Y" will not be displayed.
- 1.5 Advertising will be permitted in accordance with ISAF Regulation 20 – ISAF Advertising Code and the Class Rules.
- 1.6 There will be separate starts for Standard rigs and Radial rigs, with each start combining all Masters categories using that rig.
- 1.7 Appendix P, Special Procedures for Rule 42, will apply and is changed as follows:
 - a) P2.2 is changed to "second time and subsequent times."
 - b) P2.3 is deleted.
 - c) P3 is changed to read: "If a boat has been protested under rule P1 and the race committee signals a *postponement*, general recall or *abandonment*, the penalty or penalties are cancelled."
- 1.8 The protest committee may impose suitable penalties, other than disqualification, for violations of the Class Rules or other non-Part 2 rules. This changes RRS 64.1.

2 NOTICES TO COMPETITORS

Notices, including race results, amendments and protest hearing schedules, shall be posted on the Official Notice Boards located in the courtyard of the New York Yacht Club (NYYC) Sailing Center at Harbour Court.

3 CHANGES TO THE SAILING INSTRUCTIONS

Any change in the sailing instructions will be posted before 1100 on Friday, October 18, or 0900 on any other day it will take effect, except that any change in the schedule of races will be posted before 2000 on the day before it will take effect. Flag "Lima" will be flown to signify such posting.

4 SIGNALS MADE ASHORE

- 4.1 Flag signals will be flown from the flagpole at NYYC.
- 4.2 When flag AP is displayed ashore, "one minute" is replaced with "not less than 60 minutes" in Race Signal "AP".
- 4.3 Signals designating the rendezvous location, as described in Appendix 1 – Race Areas, will be displayed at 1130 on Friday, October 18, and at 0900 on Saturday, October 19, and Sunday, October 20, from the flagpole at NYYC. A courtesy announcement giving the Race Area will be made on VHF Channel 72 at those times.

5 SCHEDULE OF RACES

- | | | | |
|-----|----------------------|-----------|----------------------------|
| 5.1 | Thursday, October 17 | 1600-1800 | Registration & Measurement |
| | Friday, October 18 | 0900-1100 | Registration & Measurement |
| | | 1130 | Skippers Meeting |

	1300	First warning signal
Saturday, October 19	1100	First Warning signal
Sunday, October 20	1100	First warning signal
	TBD	Awards to follow ASAP after last race

- 5.2 No warning signal will be made after 1530 on the final day of the regatta.
- 5.3 Up to 10 races are scheduled. A minimum of three races must be completed to constitute a regatta. No more than four races shall be run on any one day.

6 RACING AREA

Racing will take place off Newport, RI, on Rhode Island Sound or in Narragansett Bay.

7 COURSES

- 7.1 The diagrams in SI Appendix 2 – Course Diagrams show the courses and course designations, including the approximate angles between the legs, the order in which marks are to be passed, and the side on which each mark is to be left. A gate, when used, shall be rounded as described in RRS 28.1(c). If the gate is replaced by a single mark, it shall be left to port.
- 7.2 The course length will be adjusted to target a race time of 45-60 minutes.
- 7.3 No later than the warning signal, the race committee signal boat will display the letter flag over the numeral pennant designating the course.

8 MARKS

- 8.1 Rounding marks will be inflatable orange tetrahedrons.
- 8.2 The offset mark, 1A, will be an inflatable orange cylinder.
- 8.3 The starting mark will be an inflatable pink tetrahedron or a pin boat.
- 8.4 The finishing mark will be an inflatable pink or green tetrahedron as designated in SI Appendix 2 – Course Diagrams.
- 8.5 New marks, when used in accordance with RRS 33, will be inflatable yellow tetrahedrons.

9 THE START

- 9.1 Races will be started in accordance with RRS 26.
- 9.2 The Class Flags will be:
- Standard Rig Fleet – Numeral pennant #1
 - Radial Fleet – Numeral pennant #2
- 9.3 The starting line will be between a staff displaying an orange flag on the race committee signal boat at the starboard end and the course side of the starting mark at the port end or a staff displaying an orange flag on the port end pin boat. A mid-line buoy (inflatable orange cylinder) may be set but is not a part of the starting line.
- 9.4 No race shall be started unless there is a minimum consistent wind speed of three knots throughout the racing area.
- 9.5 A boat shall not start later than five minutes after her starting signal. Such boat will be scored DNS. This changes RRS 35 and RRS A4.1.

10 CHANGE OF COURSE

- 10.1 A change of course will be signaled in accordance with RRS 33.
- 10.2 When in a subsequent change a new mark is replaced, it will be replaced by an original mark.

11 THE FINISH

- 11.1 The finishing line will be between a staff displaying an orange flag on a race committee boat and the course side of the finishing mark. Note that in courses O1 and O2, the finishing mark is the same as the starting mark.
- 11.2 Code flag “A” displayed while boats are finishing means “No more racing today”.

12 TIME LIMITS

- 12.1 The time limit for a race will be 120 minutes.

- 12.2 If no boat has passed Mark 1 within 30 minutes, the race will be abandoned. Failure to meet this target time will not be grounds for redress. This changes RRS 62.1(a).
- 12.3 Boats failing to finish within 30 minutes after the first boat in her class sails the course and finishes will be scored DNF without a hearing. This changes RRS 35, A4 and A5.

13 MEASUREMENT & EQUIPMENT

- 13.1 Each competitor is responsible for ensuring their equipment is in compliance with the ILCA rules. Failure to do so may result in disqualification from the regatta. NOR 3 will be enforced and other measurement and equipment checks may be done at any time during the regatta.
- 13.2 Competitors will be issued colored mast bands at registration that shall be displayed on each boat around the mast between the gooseneck and vang tang. Colors shall be green for Apprentices, red for Masters, blue for Grand Masters, and yellow for Great Grand Masters.

14 PENALTY SYSTEM

- 14.1 RRS Appendix P will be in effect.
- 14.2 Jury boats will be identified with a black & white striped flag.

15 PROTESTS AND REQUESTS FOR REDRESS

- 15.1 Competitors intending to protest shall inform the race committee immediately after finishing and before communicating with coaches or spectators. Boats should sail to the non-course side of the finish boat and report their intent to protest to the finish boat. Boats that do not finish shall report their intent to protest to any race committee boat at the first possible opportunity. This changes RRS 61.1(a).
- 15.2 Breaches of SIs 1.4 and 17.2 will not be grounds for a protest by a boat. This changes RRS 60.1(a).
- 15.3 Protest forms are available outside the Jury Room in the NYYC Sailing Center. Protests and requests for redress or reopening shall be delivered there within the protest time limit, which ends 45 minutes after the time the race committee finish boat docks.
- 15.4 The protest time limit will be posted on the Official Notice Board as soon as practicable after docking.
- 15.5 Protests will be heard in the approximate order posted. The time and place of protest hearings will be posted within 30 minutes after the end of protest time.
- 15.6 On the last day of the regatta, a request for reopening a hearing shall be delivered to the jury secretary:
 - a) within the protest time limit if the requesting party was informed of the decision on the previous day; or
 - b) no later than 30 minutes after the requesting party was informed of the decision on that day. This changes RRS 66.
- 15.7 On the last scheduled day of racing, a request for redress based on a protest committee decision shall be delivered no later than 30 minutes after the decision was posted. This changes RRS 62.2.

16 SCORING

- 16.1 The Low Point Scoring System, RRS Appendix A2, will be used except as modified below.
- 16.2 Ten races are scheduled for this event. Three races must be completed to constitute a regatta.
- 16.3
 - a) When fewer than six races have been completed, a boat's series score will be the total of her race scores.
 - b) When six or more races have been completed, a boat's series score will be the total of her races excluding her worst score.
- 16.4 The NA Masters handicap system will apply. Add the following points to each race to find the overall series winner: Apprentices – add 3 points; Masters – add 2 points; Grand Masters – add 1 point; Great Grand Masters – add 0 points. The results are recalculated and competitors ranked from lowest to highest score after handicap points have been added.

17 SAFETY REGULATIONS

- 17.1 Life jackets shall be worn at all times in accordance with SI 1.4.
- 17.2 Prior to the warning signal for the first race each day, all yachts shall check-in with the race committee signal boat by passing astern on starboard tack. The race committee will acknowledge by responding with the sail number.

- 17.3 A competitor who withdraws from a race or intends not to start a race shall inform the nearest safety or race committee boat as soon as possible. If unable to do so, a competitor shall call the NYYC Sailing Office at 401-845-9633 to report their withdrawal as soon as possible.

18 SUPPORT BOATS

- 18.1 Support and coach boats shall stay outside the racing area from the time of the preparatory signal for the first class to start until all boats have finished or retired or the race committee signals a *postponement*, general recall or *abandonment*. The Racing Area is defined as no less than 50 yards (150 feet) distance from any boat that is racing.
- 18.2 Any coach or support boat that infringes this rule will be warned by a member of the protest committee or race committee. Failure to comply may result in the protest of any racing boat(s) associated with any offending support boat. (This changes RRS 60.2.)
- 18.3 Support boats shall register with the organizing authority at Registration.

19 TRASH DISPOSAL

- 19.1 Trash may be placed aboard support and race committee boats.
- 19.2 For the purposes of RRS 55, bodily fluids shall not be considered “trash.”

20 PRIZES

Trophies will be awarded to the overall winner (lowest score after handicap points) in both the Standard and Radial fleets, the top woman finisher in both the Standard and Radial fleets, and the top three finishers in each of the four age divisions in both Standard and Radial fleets.

21 LIABILITY & MEDIA WAIVERS

- 21.1 Each competitor shall complete the online Liability & Media Waiver available on the regatta website and submit the waiver prior to the close of registration.
- 21.2 Competitors participate in this regatta entirely at their own risk. See RRS 4, Decision to Race. The Organizing Authority, New York Yacht Club, and the ILCA will not accept any liability for material damage or personal injury or death sustained in conjunction with or prior to, during, or after the regatta.

22 NOTES

- 22.1 Competitors are reminded that Narragansett Bay and its approaches are considered restricted channels for commercial traffic and other vessels restricted in their ability to maneuver. Competitors must comply with the government right-of-way rules when in proximity to commercial or privileged marine traffic.
- 22.2 Newport Tides

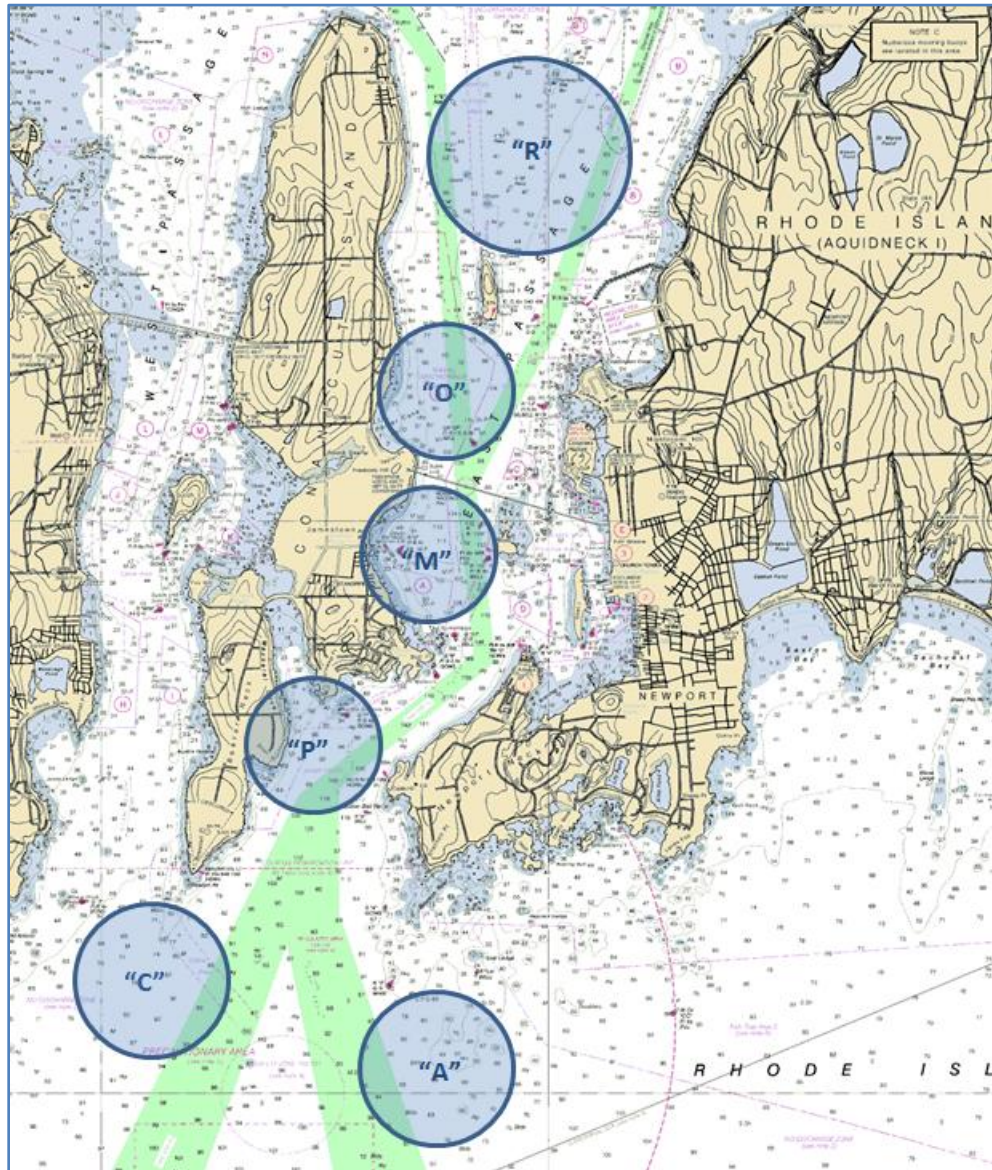
<i>Day</i>	<i>Date</i>	<i>High Tide</i>	<i>Feet</i>	<i>Low Tide</i>	<i>Feet</i>
<i>Thursday</i>	<i>Oct. 17</i>	<i>0659</i>	<i>4.5</i>	<i>1303</i>	<i>-0.1</i>
<i>Friday</i>	<i>Oct. 18</i>	<i>0746</i>	<i>4.6</i>	<i>1342</i>	<i>-0.1</i>
<i>Saturday</i>	<i>Oct. 19</i>	<i>0830</i>	<i>4.6</i>	<i>1420</i>	<i>-0.1</i>
<i>Sunday</i>	<i>Oct. 20</i>	<i>0912</i>	<i>4.5</i>	<i>1456</i>	<i>0.0</i>

- 22.3 For further information please contact:

New York Yacht Club, Harbour Court
5 Halidon Avenue
Newport, RI 02840
Tel: 401-845-9633
Fax: 401-846-3303
Email: sailingoffice@nyyc.org

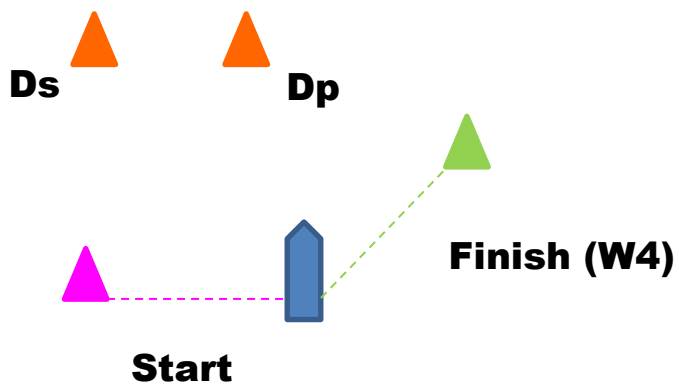
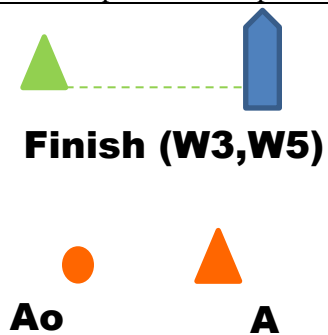
Regatta Chair Steven Kirkpatrick
Email: steve_kirkpatrick@hotmail.com

APPENDIX 1 – RACE AREAS

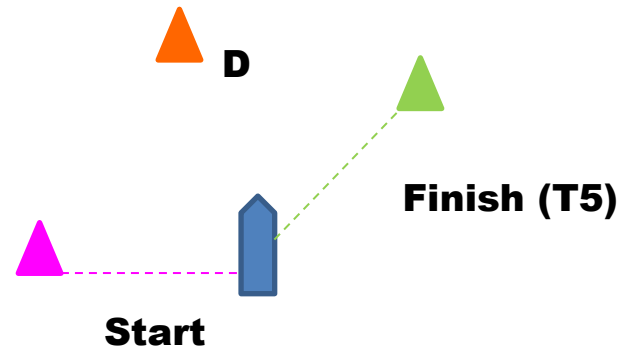
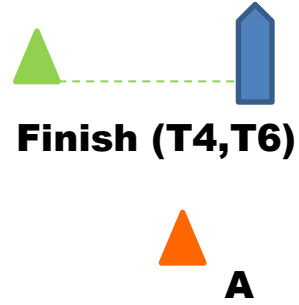


APPENDIX 2 – COURSE DIAGRAMS

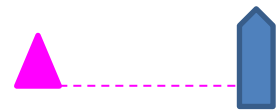
Configuration	Designation	Course	Finish mark
Windward-Leeward	W3	Start-A-Ao-Ds/Dp-Finish	Green
	W4	Start-A-Ao-Ds/Dp-A-Ao-Dp-Finish	Green
	W5	Start- A-Ao-Ds/Dp-A-Ao-Ds/Dp-Finish	Green



Configuration	Designation	Course	Finish mark
Triangle	T4	Start-A-B-D-Finish	Green
	T5	Start-A-B-D-A-D-Finish	Green
	T6	Start-A-B-D-A-D-Finish	Green



Configuration	Designation	Course	Finish mark
Inner Trapezoid	O1	Start-A-Ao-Ds/Dp-A-B-Cp-E-Finish	Pink
Outer Trapezoid	O2	Start-A-B-Cs/Cp-B-Cp-E-Finish	Pink



Start/Finish

