

2013 Statue of Liberty Race

July 6-7, 2013, Sandy Hook Bay Catamaran Club,
Atlantic Highlands, NJ

Organizing Authority: Sandy Hook Bay Catamaran Club

SAILING INSTRUCTIONS

1 RULES

- 1.1 The regatta will be governed by the *rules* as defined in *The Racing Rules of Sailing 2013-2016 (RRS)*. If there is a conflict between languages the English text will prevail.
- 1.2 This is an international competition; therefore, pursuant to RRS 88.2 the US Sailing prescription to RRS 40 will not apply.

2 NOTICES TO COMPETITORS & INFORMATION MEETING(S)

- 2.1 Notices to competitors will be posted on the notice board located at the Cat House side of the Club Notice Board at the entrance to the beach. NOTE: White boards may be used for informal communications like weather reports, provisional results, etc. but they are not OFFICIAL notice boards.
- 2.2 There will be a competitors' meeting on Saturday, July 06, 2013 at 0930 hours in or just outside the Cat House. There will be a second competitors' meeting on Sunday July 07, 2013, at 1000 hours for the buoy racing scheduled for Sunday July 07, 2013. Other competitors' meetings may be scheduled as required.

3 CHANGES TO SAILING INSTRUCTIONS

- 3.1 Any change to the sailing instructions will be posted not less than 60 minutes prior to the first scheduled race on the day it will take effect, except that any change to the schedule of races will be posted prior to the previous day's protest time limit.

4 SIGNALS MADE ASHORE

- 4.1 Signals made ashore will be the flag pole outside the Cat House.
- 4.2 When flag AP is displayed ashore, '1 minute' is replaced with 'not less than 30 minutes' in race signal AP. *This changes Race Signal AP.*

5 SCHEDULE OF RACES

- 5.1 There will be 2 days of racing (07/06 – 07/07) -
- 5.2 The scheduled first warning signal:
 - 5.2.1 Saturday – 07/06 is 1030.
 - 5.2.2 Sunday – 07/07 is 1030 if the Statue Race is to be re-sailed.
 - 5.2.3 Sunday - 07/07 is 1100 for buoy racing.
- 5.3 On Sunday, 07/07, no warning signal will be made after 1500 hours.

6 CLASS FLAGS AND ORDER OF STARTS

- 6.1 For the Statue of Liberty Distance Race, all competitors will start together in one start. The Class flag will be announced at the competitors meeting. A 5 minute sequence will be used according to RRS 26.
- 6.2 Class flags assignments for Buoy racing on Sunday July 7, 2013 **will be announced at the initial competitors' meeting**. Divisions will be divided by one-design and Portsmouth classes. 5 boats of the same class are required for a one-design division. All other boats will be grouped into a portsmouth handicap division.
- 6.3 The initial order of starts **will be announced at the initial competitors' meeting**.

7 RACING AREA

- 7.1 Saturday, July 6 2013. The racing area will be from the Sandy Hook Bay to the Lower and Upper Bay of New York Harbor.
- 7.2 Sunday, July 7 2013. The racing area will be an area of the Sandy Hook Bay out in front of Sandy Hook Bay Catamaran Club.

8 THE COURSES

- 8.1 **Saturday, July 6 2013**, the course is a distance race with a start, one mark left to port at the Earle Naval Pier security zone, the Statue of Liberty, rounded to port or starboard, the Earle security zone mark left to starboard and a finish. Reference Attachment A.
- 8.2 **Sunday, July 7 2013**, Standard Courses will be used. Reference Attachment B.

9 MARKS

- 9.1 **Saturday July 6 2013**: An inflatable mark will be placed at the Northeast corner of the Earle Navy Security Zone. Its color will be announced at **the initial competitor's meeting**. This mark must be left to port on the way to the Statue of Liberty and must be left to starboard on the way back to the finish.
- 9.2 The Statue of Liberty can be rounded in either direction. It is marked by a security zone with small white markers. You cannot sail inside the security markers. Failure to do this will result in a DSQ.
- 9.3 **Missing Mark**: If the statue cannot be rounded, a Missing Mark Flag, Code M, will be flown and multiple horns sounded from a race committee boat stationed near the statue. Round the boat displaying the flag in either direction.
- 9.4 The starting and finishing marks will be announced at the **initial competitor's meeting**.
- 9.5 **Sunday July 7, 2013**: Rounding marks of the Inner Course **will be announced at the initial competitor's meeting**.
- 9.6 An offset mark may be used and will be announced at **the initial competitors meeting**.
- 9.7 A barging (keep away) buoy may be attached to the RC signal boat. Rule 31 shall not apply to the barging (keep-away) buoy itself, but shall apply to the RC Signal boat. *This changes RRS 31.*

10 AREAS THAT ARE OBSTRUCTIONS

- 10.1 The Earle Navy Security Zone and the security zone around the statue of Liberty and Ellis Island.

11 THE START

- 11.1 Races will be started using rule 26 with the warning signal made 5 minutes before the starting signal.
- 11.2 The starting line will be between a staff displaying a **red/orange shape/flag** on the Race Committee boat and the course side of the mark as described in instruction 9.4.
- 11.3 Boats whose warning signal has not been made, shall avoid the starting area during the starting sequence for other races. The starting area is defined as an area extending approximately 100 feet in all directions from the starting line.
- 11.4 Sunday Buoy racing only: A boat starting later than four minutes after her starting signal will be scored Did Not Start without a hearing. *This changes RRS A4.*

12 CHANGE OF THE NEXT LEG OF THE COURSE

- 12.1 To change the next leg of the course, the RC will lay a change mark (or move the finishing line) and remove the original mark as soon as practicable. When in a subsequent change a change mark is replaced, it will be replaced by an original mark. A single gate mark may be moved or adjusted without a signal. *This changes RRS 33.*

13 THE FINISH

- 13.1 **Saturday, July 6 2013**: The finishing line will be between two inflatable marks (color to be announced at the initial competitors meeting) aligned nearly perpendicular to the beach. Competitors may finish in either direction.
- 13.2 **Sunday, July 7 2013**: The finishing line will be between a staff displaying a **red/orange shape/flag** on the Race Committee boat and a buoy to the starboard side of the committee boat as described in instruction 9.4.
- 13.3 If the race committee is absent when a boat finishes, she should report her finishing time, and her position in relation to nearby boats, to the race committee at the first reasonable opportunity.

14 PENALTY SYSTEM

- 14.1 The Two-Turns Penalty is replaced by the One-Turn Penalty. This changes RRS 44.1.

15 TIME LIMITS AND TARGET TIMES

- 15.1 The race will be abandoned if no boat makes it to the Verrazano Narrows Bridge in 3 hours. After the first boat passes under the bridge, the rest of the competitors will have 50% more time to reach the bridge. For example, if the first boat reaches the bridge at 2 hours, the rest of the fleet must reach the bridge in 3 hours. $\{2\text{hrs} + .5(2\text{hrs}) = 3$

hrs}. REMEMBER, when you reach the bridge you have only completed roughly one third of the course. The race committee will turn back boats that have not made it in the allotted time.

15.2 **IF YOU ARE ASKED TO TURN BACK, TURN BACK!** You will still be scored and will be competing for the Little Ms Liberty Cup (Awards). A shorten course flag, Code S, will be displayed

15.3 Boats may be finished on the course at the discretion of the RC. The RC determines the method and order of finishing. *This changes RRS 35 and A4.*

16 PROTESTS AND REQUESTS FOR REDRESS

16.1 Protest forms are available at the notice board as described in instruction 2.1. Protests and requests for redress or reopening shall be delivered there within the appropriate time limit.

16.2 For each class, the protest time limit is 60 minutes after the signal boat has docked after the last race of the day, or 1500 hours, whichever is later.

16.3 Notices will be posted no later than 30 minutes after the protest time limit to inform competitors of hearings in which they are parties or named as witnesses. Hearings will be held in the protest room, the location of which shall be posted on the official notice board, beginning at the time posted on the notice board.

16.4 Notices of RC or Protest Committee (PC) protests will be posted to inform boats under RRS 61.1(b).

16.5 Breaches of IHCA class rule 8.1 (with respect to the country of certification only), of instructions 11.3, 18, 21 will not be grounds for a protest or a request for redress by a boat. *This changes RRS 60.1.* Penalties for these breaches may be less than disqualification if the PC so decides. The scoring abbreviation for a discretionary penalty imposed under this instruction will be DPI.

16.6 On the last scheduled day of racing a request for reopening a hearing shall be delivered
(a) within the protest time limit if the requesting party was informed of the decision on the previous day;
(b) no later than 30 minutes after the requesting party was informed of the decision on that day.

This changes RRS 66.

16.7 On the last scheduled day of racing a request for redress based on a PC decision shall be delivered no later than 30 minutes after the decision was posted. *This changes RRS 62.2.*

17 SCORING

17.1 **Statue of Liberty Race:** All boats will be racing using the current US SAILING Portsmouth Handicap rating system with wind speed corrections, weight and adjustments for non-class equipment. Wind speed will be recorded on the course and averaged over the length of the race.

17.2 Sails carried are considered sails used. If you bring it with you, you will be rated as if you used it. If the boat's Portsmouth rating is modified by extra sails, crew or other non-class standard equipment, the boat is a different "Class".

17.3 Portsmouth adjustments for light and heavy weight crews will be used for scoring under the USSAILING handicap system. All crew must weigh in and the combined crew weight must be on registration form.

17.4 The largest fleet must be sailing within the class rules. Weight correction or other Portsmouth correction factors will not be used when scoring the largest fleet. (See trophies c) The count of participants in the largest fleet will be determined by the amount of boats that register for the race.

17.5 The Single Handed winner is based on best Portsmouth handicap finish for a boat that is normally sailed single handed

17.6 **Sunday, July 7 2013, Buoy Racing;** One race is required to be completed to constitute a series.

(a) the distance race will be part of the series as broken down by division.

17.7 (a) When three or fewer races have been completed, a boat's series score will be the total of her race scores. *This changes RRS A2.*

(b) When four or more races have been completed, a boat's series score will be the total of her race scores excluding her worst score. *This changes RRS A2.*

18 SAFETY REGULATIONS

18.1 A personal flotation device shall be worn, properly fastened, from dock to dock by competitors while launching and when sailing, except briefly while adjusting clothing or equipment. The penalty for failure to comply with this rule shall be at the discretion of the protest committee, and may result in disqualification. Pursuant to the US Sailing prescription to RRS 88.2 the US Sailing prescription to RRS 40 will not apply.

18.2 Boats shall check in by hailing their sail numbers to the RC signal boat before the start of the first race each day (and the first race following any postponement ashore).

18.3 A boat that retires from a race shall notify the RC as soon as possible.

19 REPLACEMENT OF CREW OR EQUIPMENT

19.1 Substitution of competitors will not be allowed without prior written approval of the Race Committee.

19.2 Substitution of damaged or lost equipment will not be allowed unless authorized by the Race Committee. Requests for substitution of equipment shall be made to the Race Committee at the first reasonable opportunity.

20 EQUIPMENT AND MEASUREMENT CHECKS

20.1 A boat or equipment may be inspected at any time for compliance with the class rules and sailing instructions. On the water, a boat can be instructed by a RC equipment inspector or measurer to proceed immediately to a designated area for inspection.

21 RADIO COMMUNICATION

21.1 VHF Radios are strongly encouraged to be carried. The RC will monitor a channel to be announced at the initial competitors meeting. Competitors shall not hail the Race Committee unless it is an emergency. If the time limit has expired, the Race Committee will make every attempt to notify competitors via radio communication. This restriction also applies to mobile telephones. The FLEET PHONE number is 732-291-9622. GPS electronics are allowed.

22 AWARDS

22.1 Two award ceremonies will take place. One after the conclusion of the Statue of Liberty Race and one following the buoy racing on Sunday. The number of trophies in each class will be based on pre-registrations.

22.2 Perpetual trophies will be awarded to the following finishers according to their respective deed of gifts.

- a) Line Honors, first boat to complete the course.
- b) Portsmouth corrected time winner
- c) First boat to finish of the largest class entered.
- d) First single-handed finisher, Portsmouth corrected.

(Open to any normal single crew boat, sailing a boat which normally is sailed with a crew of 2, is excluded).

e) The Founders Trophy to be awarded the best Portsmouth finisher from the Sandy Hook Bay Catamaran Club.

f) The "Little Ms Liberty Cup" will be awarded to the best Portsmouth corrected time of those boats turned around at the bridge.

Those sailors winning the trophy(s) shall cause to have their names to be engraved per the individual deeds. The winners are responsible for the care of the trophies for the year and must guarantee its return for the following year's race.

23 DISCLAIMER OF LIABILITY

Competitors participate in the regatta entirely at their own risk, See RRS 4, Decision to Race. It is the personal responsibility of each competitor to determine their level of safety. If wind, wave or water conditions make you doubtful of your ability to handle the conditions safely, it is your decision and your decision only to continue sailing or to retire. The organizing authority will not accept any liability for property damage, personal injury or death sustained in conjunction with, prior to, during, or after the regatta.

24 INSURANCE

24.1 Each participating boat shall be insured with valid third-party liability insurance with a minimum coverage of \$100,000 (USD) per event or the equivalent.

25 SPECIAL NOTES

25.1 Any boat receiving 'hands on' assistance from rescue/mark boats will be scored Did Not Finish. *This changes RRS rule A5.* The RC may decide when a boat or crew needs assistance.

25.2 The RC may request redress for competitors who exhibit extraordinary sportsmanship.

Attachment A – Illustrating the Statue of Liberty Race

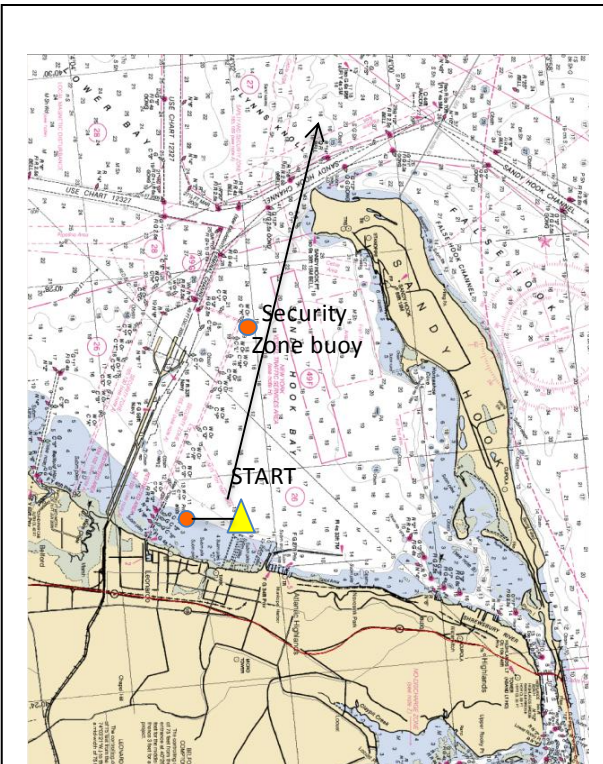


Fig A1: Start between boat and starting mark, leave security zone buoy to port. Stay out of Navy security zone marked by white buoys.

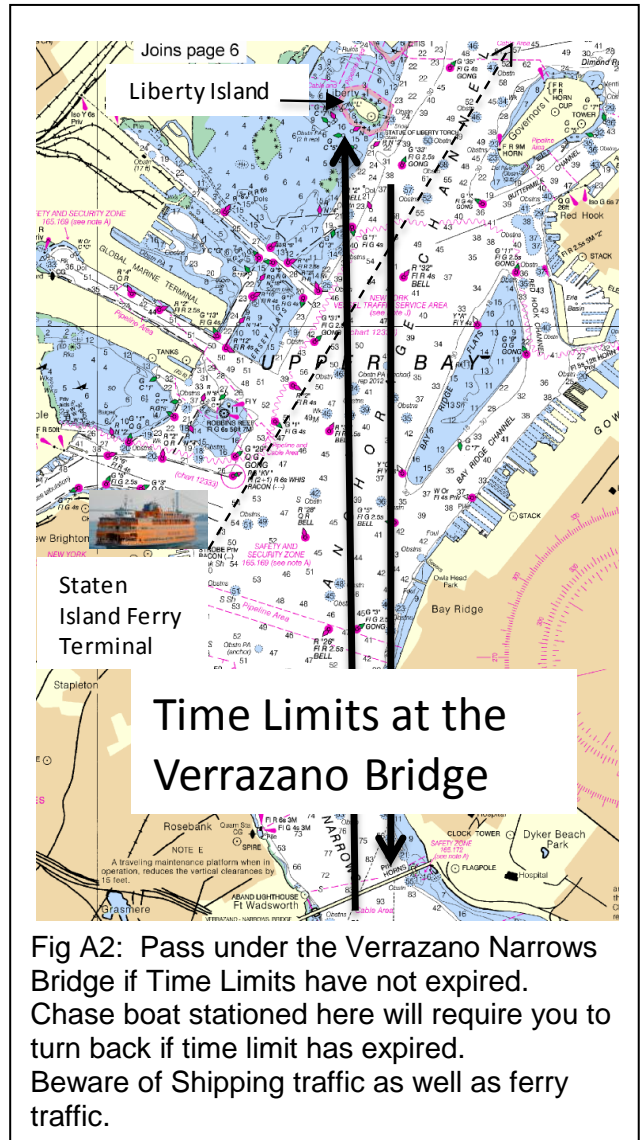
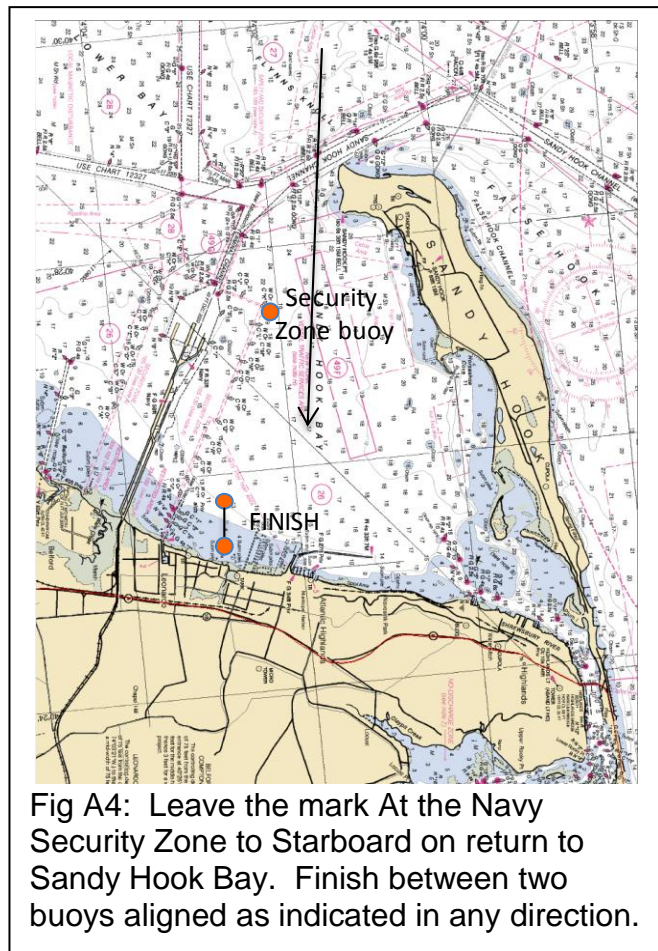
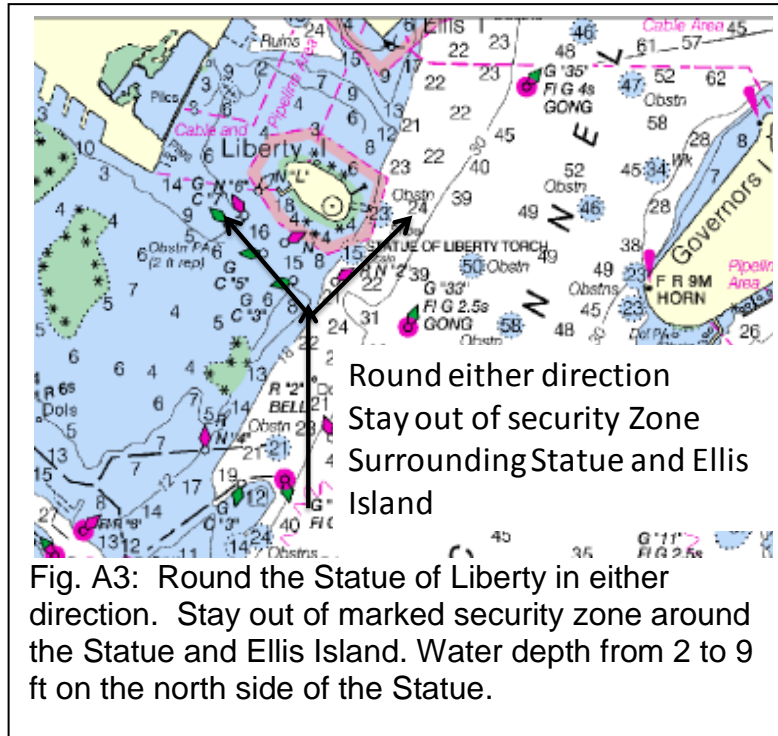


Fig A2: Pass under the Verrazano Narrows Bridge if Time Limits have not expired. Chase boat stationed here will require you to turn back if time limit has expired. Beware of Shipping traffic as well as ferry traffic.

Attachment A (cont.)– Illustrating the Statue of Liberty Race



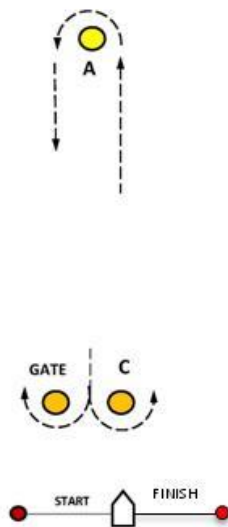
ATTACHMENT B - Illustrating the Course, Buoy Racing

No.	Course	Finish	Options
1	(S) A C A	(F) Downwind	1G
2	(S) A C A C A	(F) Downwind	2G
3	(S) A C A B C	(F) Upwind	3G
4	(S) A C A B C A	(F) Downwind	4G
5	(S) A C	(F) Upwind	5G
6	(S) A C A C	(F) Upwind	6G
7	(S) A C A B C A C	(F) Upwind	

COURSE 1 and 2 DIAGRAM and ROUNDING ORDER (Not to Scale)

COURSE 1: START - A - C (or GATE) - A - FINISH

COURSE 2: START - A - C (or GATE) - A - C (or GATE) - A - FINISH



COURSE 5 and 6 DIAGRAM and ROUNDING ORDER (Not to Scale)

COURSE 5: START - A - C (or GATE) - FINISH

COURSE 6: START - A - C (or GATE) - A - C (or GATE) - FINISH

