

# SAILING INSTRUCTIONS

## GIYS Junior Regatta

11 July 2013



### 1. RULES

- 1.1 The regatta will be governed by *rules* as defined by the current *Racing Rules of Sailing* (RRS), the rules of the rules of the Optimist, International Laser, Laser Radial and Club 420 classes, except as any of these are changed by these sailing instructions. GIYS is the organizing authority.
- 1.2 Advertising is in accordance with the ISAF Advertising Code, Appendix 1, Regulation 20 and the relevant class rules.

### 2 ENTRIES

Eligible boats may enter by completing registration with the organizing authority. Eligibility requirements for competitors are:

- 2.1 Applicants for all classes must not turn 19 years old in the year of the event, or earlier.
- 2.2 Optimist class age rules apply.
- 2.3 Membership in the class association is not required
- 2.4 Chesapeake Bay Yacht Racing Association (CBYRA) membership is not required.

### 3 SAFETY

- 3.1 A Coast Guard-approved PFD must be worn and fully secured at all times while afloat, except for brief periods while adding or removing clothing. Whistles permanently attached to the PFDs are recommended.
- 3.2 A boat retiring from a race shall notify a race committee boat before leaving the course, or, when that is impossible, the Race HQ immediately after arrival ashore.
- 3.3 A boat shall carry all equipment required by her class rules.

### 4 CHECK-IN

Competitors must check in with the race committee signal boat for their course before the warning signal of the first race each day.

### 5 NOTICES TO COMPETITORS

Notices to competitors will be posted on the official notice board located at Race HQ at the Pavilion at "The Point" on Gibson Island.

### 6 CHANGES IN SAILING INSTRUCTIONS

Any change to the sailing instructions will be posted before 10:30 AM on the day it will take effect, except that any change to the schedule of races will be posted by 6:00 PM on the day before it will take effect.

### 7 SIGNALS MADE ASHORE

- 7.1 Signals made ashore will be in accordance with Race Signals and displayed at the Pavilion at Race HQ at "The Point".
- 7.2 Flag AP with two horns (one horn when lowered) means, "The race is postponed. The warning signal will be made not less than 30 minutes after AP is lowered."

### 8 SCHEDULE OF RACES

Races are scheduled as follows:

- 0930 – Skippers Meeting – Pavilion at "The Point"
- 1000 – Boats on the water
- 1045 – First Warning - Course 1 & 2
- 1630 – Awards ceremony

Note: Time of First Warning for Course 3 (Optimist Green Fleet) to be announced at skipper's meeting

- 8.1 It is the Race Committee's intent to hold as many as 5 races as time and weather conditions permit, but one race shall constitute a regatta. However it is understood by all competitors that the PRO on each course (1, 2 or 3) at his/her sole discretion may shorten, abandon, or modify the race in accordance with the RRS. No warning signal will be made after 1430 on any course.
- 8.2 The distance from the launch site to the racing area is approximately as follows:  
**Course 1 – 1.5 nm Course 2 - 1.0 nm Course 3 - 0.2 nm**
- 8.3 Should conditions make it impossible to complete the scheduled number of races, the regatta shall be terminated and the results based on the races completed and scored. Such termination and decisions regarding results shall be determined by the Chief Judge and PRO in compliance with the Rules. One race shall constitute a regatta.

## 9 CLASS FLAGS

Class flags will be:

Class <u>Optimist - Green</u>	Flag <u>"G" on white board</u>
Class <u>Optimist – Red; Blue; White</u>	Flag <u>"O"</u>
Class <u>Club 420 (Spinnaker &amp; Non Spinnaker)</u>	Flag <u>"420"</u>
Class <u>Laser &amp; Laser Radial</u>	Flag <u>"L"</u>

## 10 RACING AREA

The racing area will be approximately as shown in Illustration A, attached. Weather conditions may require modification of these courses areas in which case notice shall be posted at the Race HQ at the Pavilion at "The Point", or by posting the "L" flag on the RC starting boat and proceeding to a new area.

## 11 COURSE DIAGRAMS

- 11.1 The diagrams in Attachment B show the courses, the order of rounding, and the side on which each mark is to be rounded or passed. Note when finishing to leeward the side of the finish mark to be passed may change depending on where the finish line is set.
- 11.2 The identifying letter of the course will be displayed on the race committee signal boat with or before the warning signal of the start.

## 12 MARKS

Marks of the various courses are as follows:

Course 1 – Orange Cylindrical "GIYC" Marks. Red tetrahedron for course change

Course 2 – Orange hippity hops.

Course 3 – Little Orange Tetrahedrons or as announced at the Skipper's meeting

## 13 THE START

- 13.1 The starting line will extend between the staff from which an orange flag is displayed on the race committee signal boat and the course side of the port-end starting (pin) mark.
- 13.2 Boats whose warning signal has not been made shall keep clear of the starting area and of all boats whose warning signal has been made.
- 13.3 A boat shall not start later than 4 minutes after her starting signal. Such boats shall be scored DNS.
- 13.4 Starting Sequence. Races will be started by using Appendix S system of the RRS. The 3 minute sound signal sequence is shown in Appendix C to these Sailing Instructions.

## 14 RECALLS

The Race Committee intends to hail the recall or sail numbers of OCS boats after the starting signal. The failure of any boat to hear the hail, an untimely hail of OCS boats, failure to hail any boats, and the order of the boats in the hail shall not be grounds for granting redress. This changes rules 41 and 62.1.

## 15 THE FINISH

The finishing line will be between a staff displaying an orange flag or shape on the course's RC and the designated finishing mark as illustrated in Appendix B to these SI's. Race finish boat does not necessarily have to be the race start boat.

## 16 CHANGE OF COURSE/SHORTEN AFTER START

Course changes either to shorten the length of the course or to change the next leg of the course will be made in accordance with Part 3 of the RRS.

## **17 TIME LIMIT**

The time limit will be 60 minutes for the Club 420, Laser and Laser Radial classes and 60 minutes for the Optimist class. Boats failing to finish within 15 minutes after the first boat finishes or within the time limit, whichever is later, will be scored (DNF) Did Not Finish. This provision changes rule 35.

- 17.1 A last place boat may be given an assured position prior to expiration of the time limit if the RC deems it necessary.

## **18 PROTESTS**

- 18.1 Protests shall be in writing, forms available at the Race Committee HQ, and delivered to the Protest Committee at the Race Committee HQ within 30 minutes after the protesting competitor arrives ashore from the course at the end of racing.
- 18.2 Protests will be heard in approximately the order of receipt as soon as possible.
- 18.3 Protest notices will be posted within 30 minutes of written protest delivery to inform competitors where and when there is a hearing in which they are parties to a hearing or named as witnesses. This posting shall constitute the notification required by RRS 63.2 and RRS 61.1(b).
- 18.4 Rule 66 is changed by adding this sentence: "on the last day of racing a party to the hearing may ask for a reopening no later than one hour after being informed of the decision."
- 18.5 A boat is not permitted to protest another boat for breaking sailing instructions 3, 4, 22 & 23. This changes Rule 60.1 (a). The penalty for breaking these instructions may be less than disqualification at the discretion of the protest committee.
- 18.6 A boat intending to protest about an incident that occurs in the racing area shall notify the RC finish boat of her intention, including the sail, number(s) of the boat(s) being protested directly after completing the race. This is considered the first "reasonable opportunity" under Rule 61.1 and it should occur before any communication with coach or spectator boats (see 23.1).

## **19 PROTEST ARBITRATION**

- 19.1 Rule 44 is modified to allow a boat either to take the penalty described in RRS 44.1 and 44.2 while on the water or to take a 40% Scoring Penalty for a breach of a rule of Part 2 after the incident but prior to the protest hearing by acknowledging the infringement before arbitration or by accepting the opinion of the arbitrator.

After a protest has been lodged, one designated representative from each boat, who shall have been on the boat when the incident occurred, may appear together before an arbitrator appointed by the protest committee. No witnesses shall be allowed.

The arbitrator will have each party describe the incident, limiting each party to approximately two minutes.

After hearing the testimony, the arbitrator will express one of the following conclusions:

1. No rule was broken. The protester has the option of withdrawing the protest. If he decides to do so, he signs to this effect on the protest form. The protest is then withdrawn and shall not be reopened or appealed. If the protester does not withdraw the protest, it will be submitted to the protest committee in the normal manner.
  2. A rule was broken by one of the boats involved. The representative of the offending boat has the option of either accepting a 40% penalty or submitting the matter to the protest committee for a protest hearing. If the penalty is accepted, the matter is closed and cannot be submitted to a hearing, be reopened, appealed or submitted for redress.
  3. The protest should be submitted to the protest committee in the normal way. When protests are submitted to the protest committee, the arbitrator shall not be a member of the protest committee hearing the protest, or be called as a witness or be present in the protest committee room. The arbitrator shall not discuss the matter with protest committee members until after the protest committee's decision has been posted.
- 19.2 Application of the 40% penalty shall be calculated in accordance with rule 44.3, except that the penalty is modified to read 40%.

## 20 SCORING

The Low-Point Scoring System, Appendix A of the racing rules, will apply for all classes. A maximum of FIVE races are scheduled, of which one shall be completed to constitute a regatta series. If five races are sailed, a boat's worst score shall be discarded.

## 21 DISPOSAL OF TRASH

Boats observed purposefully discharging trash into the water will either be disqualified from all races the day the infraction is observed or be subject to other suitable disciplinary action, or both.

## 22 INSTRUCTIONS FOR COACHES, SUPPORT BOATS AND SPECTATORS:

- 22.1 A competitor shall receive no outside assistance from coaches, spectators or support boats during any race. This restriction shall be in effect, except in the case of demonstrable emergency, prior to the start of each race, at the Warning Signal for the first class' start until after the competitor has finished race and cleared the starting area.
- 22.2 Prior to the start of each race, at the Warning Signal for the first start until after the last class has started, all coach and spectator boats shall leave the area being used by the racing boats and shall station themselves outside of either the pin end or the RC signal boat, or to leeward of the starting line but no closer than 150 ft to those limits. Thereafter, coach or support boats shall not approach closer than 300 ft to any boat that is racing, except at rounding marks or the start and finish lines, where they shall not approach closer than 150 ft immediately upwind of the windward finishing mark, or downwind of the leeward finishing mark or the extensions of the finish lines.
- 22.3 **Coach and spectator boats shall monitor VHF channel 78A and shall immediately follow all instruction from the Race Committee and the Organizing Authority.** At no time shall any spectator, coach, or support boat interfere in the conduct of the race.
- 22.4 At no time during the course of any race shall any competitor approach or signal a spectator boat, nor shall a spectator boat approach or signal any competitor.
- 22.5 Any competitor associated with a coach, spectator or support boat breaking the instruction of the section is subject to a penalty up to and including disqualification for the relevant race.
- 22.6 Coaches must wear fully secured PFDs while on the water. Other spectators and support people – race committee, mark and safety boat operators. – are strongly encouraged to wear fully secured PFDs while on the water.

## 23 PRIZES

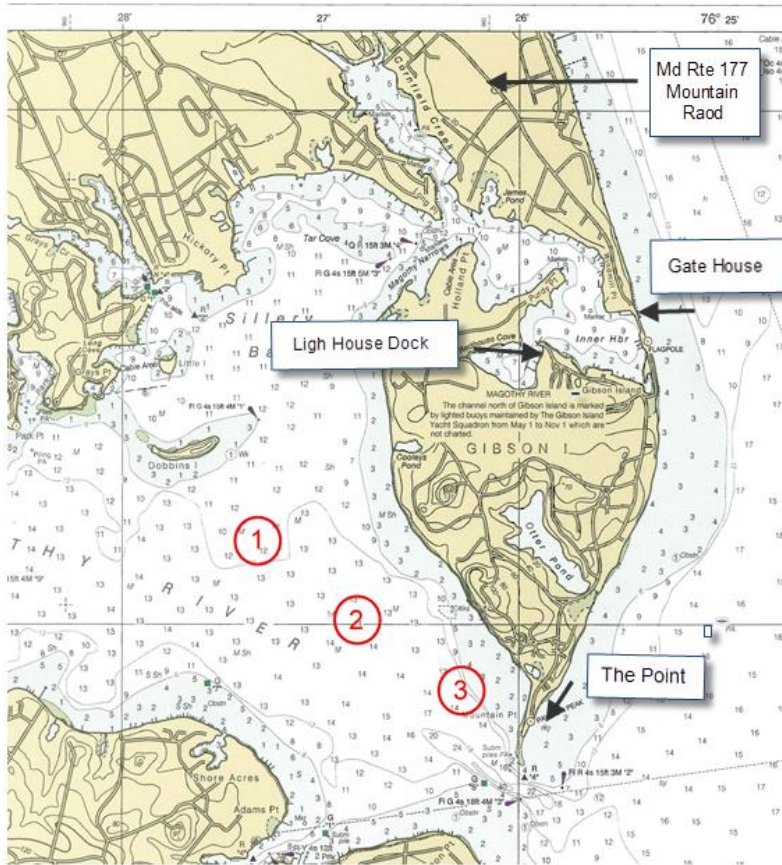
Awarded to each member of the crew placing first, second and third in the Optimist Red/Blue/White Fleets; Optimist Overall Championship (combined Red/Blue/White fleet) first, second, and third; Laser Radial, and Club 420 first three places. Presentation ribbons will be awarded in the Optimist Green Fleet, and first, second and third place finishers will be announced.

**Illustration A - The Racing Areas**

Course 1 -- 420/Laser/Laser Radial

Course 2 -- Opti Red/Blue/White

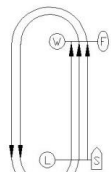
Course 3 -- Opti Green



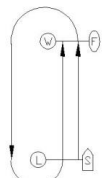
**ATTACHMENT B-WINDWARD LEEWARD COURSES**



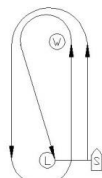
"WL"



"WL2-W"



"WL-W"



"WL2"

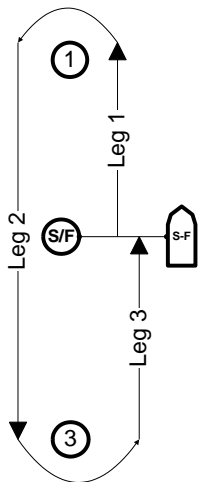
**NOTE: "WL" COURSES ARE WINDWARD – LEEWARD STARTING AT THE LEEWARD MARK. THE NUMBER THAT FOLLOWS INDICATES THE NUMBER OF LAPS FROM WINDWARD TO LEEWARD. IF THE FINISH IS TO BE AT THE WINDWARD MARK THEN THE COURSE DESIGNATION WILL BE FOLLOWED BY ANOTHER "W" AS SHOWN ABOVE**

**ATTACHMENT B LASER & 420 COURSES**



ATTACHMENT B MID LEG START – FINISH COURSES

**MID LEG START/FINISH COURSES ARE DESIGNATED BY THE LETTERS "MWL" DISPLAYED ON THE START/FINISH BOAT FOLLOWED BY THE NUMBER OF LAPS**



**FOR EXAMPLE: THE COURSE SHOWN IS DESIGNATED "MWL-1". ONE LAP IS DESIGNATED BY "MWL-1" ON THE RC START/FINISH BOAT. TWO LAPS ARE DESIGNATED BY "MWL-2" POSTED ON THE RC START/FINISH BOAT. COMPETITORS MAY SAIL THROUGH THE STARING LINE ON THE DOWNWIND LEG(S), BUT THEY ARE NOT REQUIRED TO DO SO.**

### Appendix C: Sound Start Sequence

<u>Signal</u>	<u>Sound</u>	<u>Time Before Start</u>
Warning	3 long	3 minutes
Preparatory	2 long	2 minutes
	1 long, 3 short	1 minute, 30 seconds
	1 long	1 minute
	3 short	30 seconds
	2 short	20 seconds
	1 short	10 seconds
	1 short	5 seconds
	1 short	4 seconds
	1 short	3 seconds
	1 short	2 seconds
	1 short	1 second
Start	1 long	0