



CAROLINA YACHT CLUB ANNUAL OPEN REGATTA

July 27 – July 28, 2013

The Carolina Yacht Club

Charleston, SC

Commodore, William McKenzie

Regatta Chairman, Harvey McCormick

SAILING INSTRUCTIONS

1.0 RULES - The regatta will be governed by *The Racing Rules of Sailing* (RRS).

1.1 US Sailing Appendix T1, T2, T3, T4.2 and T4.4 are in effect.

2.0 NOTICES TO COMPETITORS - Notices to competitors will be posted on the Official Notice Board located downstairs at the Boathouse.

3.0 CHANGES IN THE SAILING INSTRUCTIONS

3.1 Any Changes to the sailing instructions will be posted not less than one hour prior to the warning signal of the first race in which the change will take place.

3.2 Any changes to the schedule of races will be posted no later than 2000 hours on the day before the change takes place.

3.3 Oral changes to the Sailing Instructions may be given on the water by hail from the Signal Boat under code flag "L" in accordance with RRS 90.2 (c). Changes must be made before the warning signal.

4.0 SIGNALS MADE ASHORE –

4.1 Signals made ashore will be displayed from the flagpole at the Carolina Yacht Club.

4.2 When code flag "AP" is displayed ashore, "1 minute" is replaced with "not less than 45 minutes" in the RRS Race Signal "AP."

5.0 SCHEDULE OF RACES –

5.1 Races are scheduled as follows:

Saturday, July 27 th	1100	Skipper Meetings
	1225	First Warning Other races to follow

Sunday, July 28 th	1200	First Warning Other races to follow
-------------------------------	------	----------------------------------------

5.2 No races will be started after 1500 on Sunday, July 28th.

6.0 CLASS FLAGS –

6.1 Class flags will be posted on the Official Notice Board prior to the Skipper's meeting.

7.0 RACING AREA –

7.1 Course A will be sailed in the harbor outside of Middle Ground.

7.2 Course B will be sailed inside of Middle Ground.

7.3 The Junior course will be sailed near the Battery.

8.0 COURSES

8.1 The diagrams show the courses, the approximate angle between legs and the order in which the marks are rounded and the side on which each mark is to be passed.

8.2 If the offset mark (1a) is missing on Course A, boats should sail to the leeward mark 2 after rounding mark 1. This changes Rule 34.

8.3 No later than the preparatory signal, the RC signal boat will display the course to be sailed. For Courses A & B, this will be designated by international code numeral flags. In the absence of flags, course boards may be used. This changes RRS 27.1. Course boards will be used to designate the course to be sailed on the Junior Course.

9.0 MARKS

	Course A	Course B	Junior Course
Course Marks	Red tetrahedron	Orange tetrahedron	Orange Balls and Orange tetrahedron
Offset Mark	Orange Ball	None	None
Starting Mark	Orange Flag	Orange Flag	Orange Ball
Finish Mark	Yellow Inflatable or Orange Flag	Yellow Inflatable or Orange Flag	Orange Ball
Change Mark	Lime Green	Lime Green	None

10.0 THE START

- 10.1 Races for course A and B will be started using RRS 26. Races for the Junior Course will be per Appendix S sound starting system (whistles).
- 10.2 The starting line for Course A and B will be between the staff displaying an orange flag on the RC signal boat on the starboard end of the starting line and the port end orange flag displayed on the starting pin boat.
- 10.3 The starting line for the Junior Course will be between the orange flag on the signal boat and the starting mark.
- 10.4 A boat starting later than 4 minutes after her starting signal will be scored Did Not Start (DNS) for that race. This changes A3.

11.0 CHANGE OR SHORTEN COURSE BEFORE OR AFTER THE START

- 11.1 When starting succeeding classes, the signal boat may elect to change the location of the weather mark for classes not started by displaying Code Flag C (without repetitive sounds) no later than the preparatory signal along with the compass bearing to the new weather mark (change mark) or by designating the color red for a change to port or green for a change to starboard. This change will be only for classes that have not started.
- 11.2 In shortening the course after the start, a race committee boat will display a signal board with the classes for which the shorten course applies will be displayed along with flag S. If no classes are displayed on a signal board, the shorter course applies to all classes.
- 11.3 If a boat in last or next to last place is delaying the start of another race, the Race Committee may terminate the race before the time limit expires and score each boat in the place it would have finished.

12.0 PENALTY TURNS

- 12.1 RRS 44.1 as modified by Appendix T1 applies. A boat may take a one-turn penalty when she may have broken a rule of Part 2 or rule 31 while racing. However, when she may have broken a rule of Part 2 while in the zone around a mark other than a starting mark, her penalty shall be a two-turns penalty. Appendix T1 is modified for the E-Scow and SIOD class so that only one turn is required when she may have broken a rule of Part 2 in the zone.
- 12.2 Any boat that does a two-turn or one-turn penalty should report this fact to the race committee as soon as possible after finishing, giving them the sail number of the boat doing the penalty turns. This changes RRS 44.2.

13.0 THE FINISH

- 13.1 The finish line for Course A & B will be between the staff displaying a blue flag on the RC boat and the finish mark or an orange flag mounted on another boat.
- 13.2 The finish line for the Junior Course will be the start line. Between an orange flag on the RC boat and the finish mark.
- 13.3 The Start/Finish line on the Junior Course is closed. No boats should cross the Start/Finish line unless they are starting or finishing. Boats who violate this Sailing Instruction can be protested only by the Race Committee.

14.0 TIME LIMITS

- 14.1 The time limit for the first boat in each class to finish is 90 minutes.
- 14.2 For Courses A and B, boats failing to finish within 20 minutes after the first boat in the class sails the course and finishes, will be scored TLE (Time Limit Expired) and will be scored two more places than the last place finisher in its class without a hearing. This changes RRS 35, A 11 and A 4.1.
- 14.3 If a boat(s) is in last or next to last place and is delaying the start of another race, the Race Committee may terminate the race before the time limit and score the boat(s) in their place.

15.0 PROTESTS AND REQUESTS FOR REDRESS

- 15.1 Appendix T3 is in effect. A boat intending to protest about an incident that occurs in the racing area shall notify the RC race committee finish boat of her intention, including the sail number of the boat(s) being protested.
- 15.2 Protest forms will be available at the "Official Notice Board". Protests shall be delivered there within the protest time limit.
- 15.3 For each class, the protest time limit is 30 minutes after the RC signal boat Committee Boat for that class has docked for the day and sounded a horn, which starts the time limit. The same protest time limit applies to all protests by the RC and jury and to requests for redress. This changes RRS 61.3 and 62.2.
- 15.4 Appendix T2 is in effect. A protested boat can take a Post Race Penalty of 20% or 30% prior to a protest hearing by completing a Competitors Penalty Acceptance form available at the "Official Notice Board".
- 15.5 Notices of scheduled protest or requests for redress hearings will be posted on the Official Notice Board within 15 minutes of the protest time limit to inform competitors of hearings in which they are parties or may be parties affected by a request for redress.
- 15.6 Protests will be held in the Clubhouse as soon as possible and in approximate order of receipt or at a time determined by the Protest Committee.

16.0 SCORING

- 16.1 The Low Point scoring system of Appendix A will apply except that a boat's final score shall be the sum of all races with no score excluded. This changes rule A2.

17.0 SAFETY

- 17.1 Safety boats will be on each course and identified with a "Safety" flag. Competitors who require safety assistance should signal so by waving both arms above their head.
- 17.2 E-Scows are required to sail with 'Float Packs' at all times while racing. Failure to do so will result in being scored DNS without a hearing. This changes RRS 63.1.
- 17.3 A boat that retires shall notify the RC as soon as possible.
- 17.4 A boat and its crew shall at all times *keep clear* of all commercial vessels and shall not maneuver in any manner which would cause a commercial vessel to be unable to sail their proper course or carry out their commercial functions in a normal manner.
- 17.5 A boat whose actions or maneuvers result in a Danger Signal (5 Horns or Sounds) from a commercial vessel may be protested.
 - 17.5.1 This Sailing Instruction can only be protested by the RC. This Changes RRS 60.1, 60.3.
 - 17.5.2 The penalty for breaking this rule shall be disqualification from the entire regatta.
- 17.6 Safety boats will be on each course and identified with a (safety) flag. Competitors who require safety assistance should signal so by waving both arms above their head.

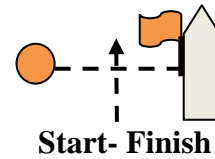
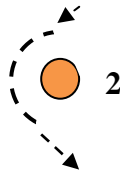
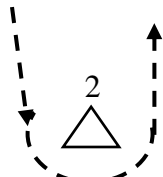
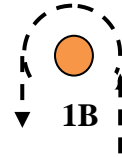
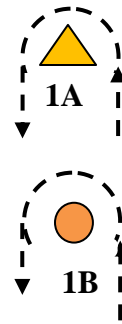
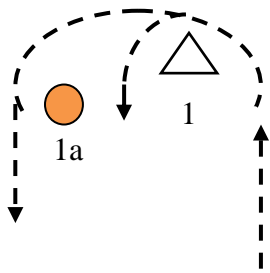
18.0 RADIO COMMUNICATIONS

- 18.1 The Race Committee will not respond to transmissions from competitors except to acknowledge retirement, protests, penalties reported or requests for emergency assistance. The race committee will use VHF channel 74 for Course A, channel 72 for Course B and channel 69 for the Junior Course. Alternate channels may be used at the discretion of the Race committee.
- 18.2 The race committee broadcasts (hails or other communications, also be considered broadcasts) concerning its intentions, the course to be sailed, starting times; course changes, etc. are a courtesy only. Failure of the Race Committee to make a broadcast, the channel of the broadcast, the timing of a broadcast, or the failure of a boat to hear a broadcast shall not be grounds for granting redress.

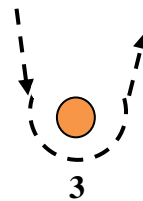
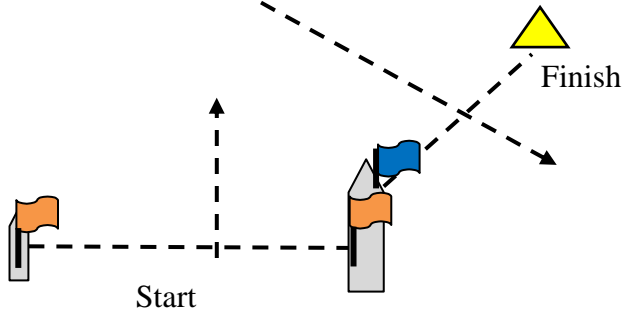
19.0 PRIZES – Prizes will be awarded according to the Notice of Race.

20.0 DISCLAIMER OF LIABILITY: Competitors participate in the regatta entirely at their own risk; see RRS 4 *Decision to Race*. The organizing authority will not accept any liability for material damage or personal injury or death sustained in conjunction with or prior to, during, or after the regatta.

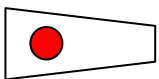
COURSE DIAGRAMS



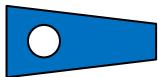
Start- Finish



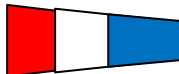
3



1



2



3

Course No.	Courses A & B
	Course A
1	S-1-1a-2-F
2	S-1-1a-2-1-1a-2-F
3	S-1-1a-2-1-1a-2-1-1a-2-F
	Course B
1	S-1-2-F
2	S-1--2-1--2-F
3	S-1--2-1--2-1--2-F

Course No.	Junior Courses
	Optimist Courses
W1	S-1B-3-F
W2	S-1B-3-1B-3-F
W3	S-1B-3-1B-3-1B-3-F
T1	S-1B-2-3- F
T2	S-1B-2-3- 1B-2-3-F
	420 Courses
W1	S-1A-3-F
W2	S-1A-3-1A-3-F
W3	S-1A-3-1A-3-1A-3-F
T1	S-1A-2-3- F
T2	S-1A-2-3- 1A-2-3-F